

# FOR LEASE

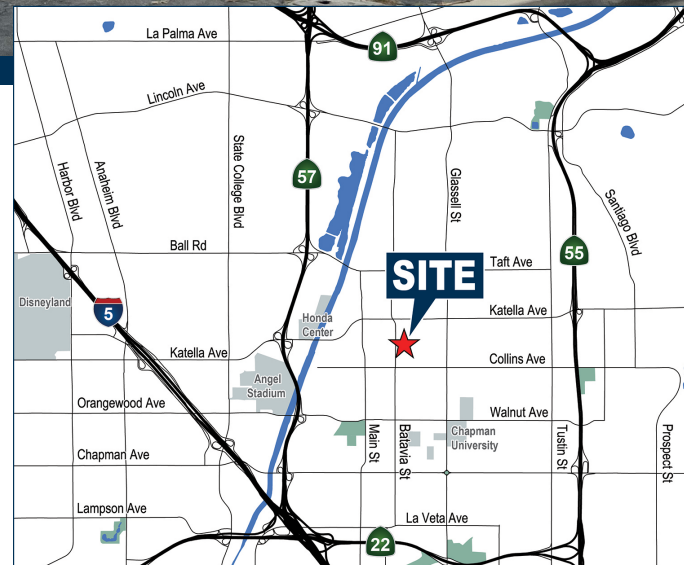
# ±4,600 SF FREE STANDING COMMERCIAL BUILDING

1051 NORTH PARKER STREET | ORANGE, CA



## PROPERTY FEATURES

- ± 4,600 SF Freestanding Commercial Building
- ±1,480 Sf of Office Space
- ±3,120 SF of Warehouse Space
- Three (3) Ground Level Doors
- Lot Size: ± 8,976 SF (0.21 Acres)
- 12' Warehouse Clear Height
- Built in 1964
- 400 Amps of Power (Verify)
- 13 Dedicated Parking Stalls
- M-2 Zoning
- Immediate Access to the **57**, **55**, **5**, **22**, and **91** Freeways



Exclusively Offered By:

## Voit

REAL ESTATE SERVICES

2400 E. Katella Avenue, Suite 750 | Anaheim, CA 92806  
License #01991785 [www.voitco.com](http://www.voitco.com)



**JASON DIROCCO**

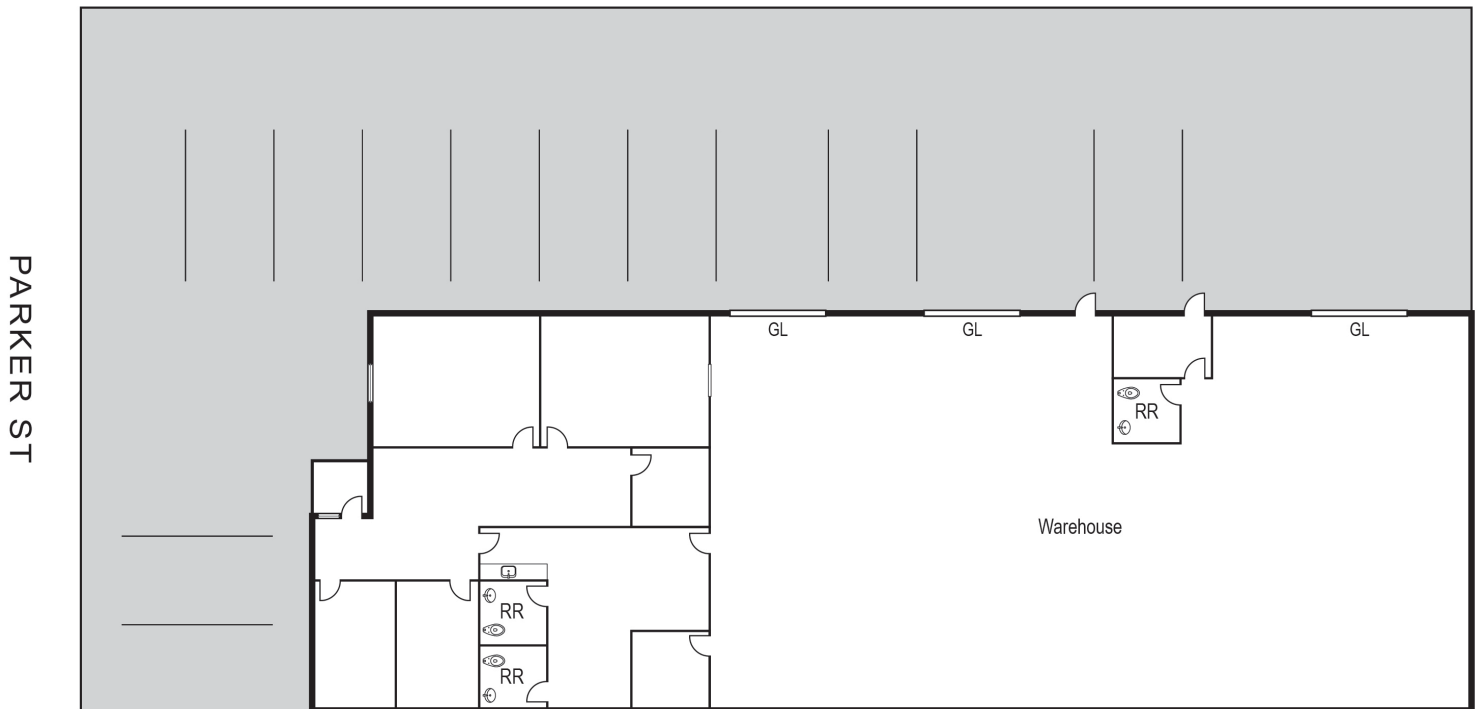
Senior Vice President | Partner

**(714) 935-2305**

[JDiRocco@voitco.com](mailto:JDiRocco@voitco.com)

License #01842301

SITE PLAN



Exclusively Offered By:

**Voit**

REAL ESTATE SERVICES

2400 E. Katella Avenue, Suite 750 | Anaheim, CA 92806  
License #01991785

[www.voitco.com](http://www.voitco.com)



**JASON DIROCCO**

Senior Vice President | Partner

**(714) 935-2305**

[JDirocco@voitco.com](mailto:JDirocco@voitco.com)

License #01842301