



FOR LEASE

699 S. State College Blvd., Unit K
Fullerton, CA

2,045 SF Industrial Unit

SITE HIGHLIGHTS:

- 24 Hour Access
- Drive Around Building
- 53' Truck Access
- Excellent Access to 55, 57, & 91 Freeways
- Various Sizes Available: 600 SF to 2,000 SF
- Onsite Management
- Security Cameras on All Access Points
- Some Offices have HVAC

UNIT FEATURES:

- 100% HVAC in Office
- Kitchenette
- Bonus Mezzanine
- Polished Concrete in Office
- Corner Unit
- LED Lights Throughout



FOR FURTHER DETAILS:

JOHN PAK

john@tricoREALTY.com
License #01483069

This information has been furnished from sources which we deem reliable; however, we do not guarantee its accuracy and assume no liability. Do not rely on any of the information contained herein without verifying it yourself directly with the listing broker or owner.

Trico Realty, Inc.
License #00342120

3100-A Pullman Street
Costa Mesa, CA 92626

714-751-4420
TricoRealty.com



FOR

699 S. State College Blvd., Unit K
Fullerton, CA

LEASE

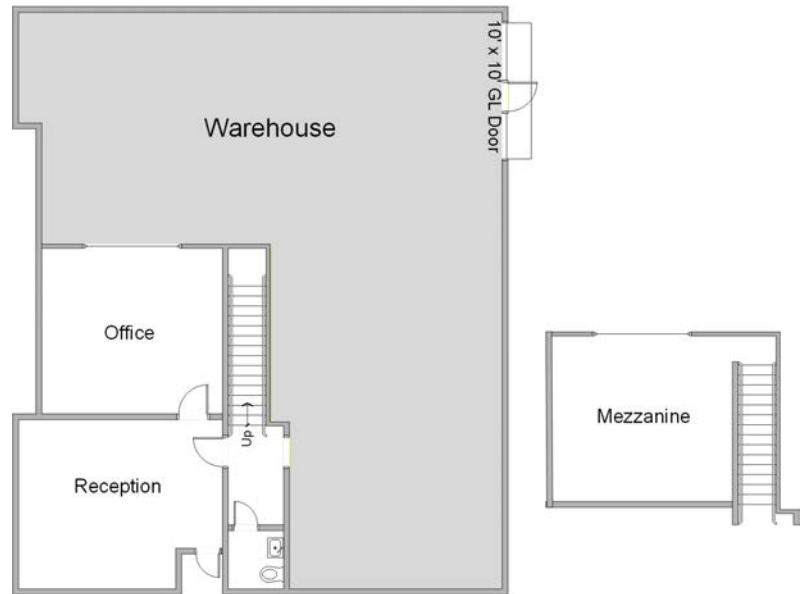
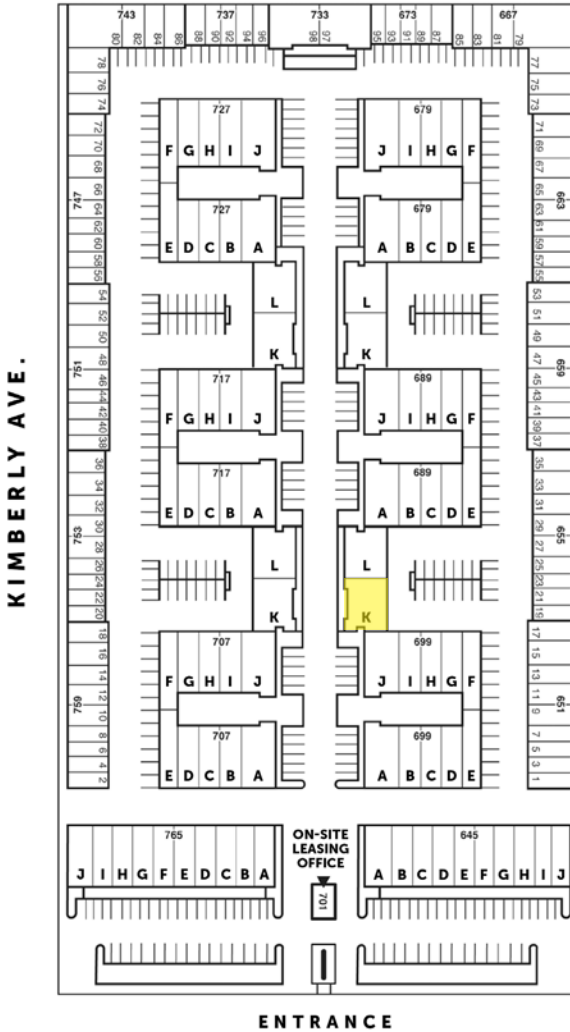
2,045 SF Industrial Unit

Unit Features

⚡ Power: 100A | 120/208

📏 Clearance Height: 16'

🚪 Ground Level Doors: One 10'x10'



*Floorplans Not to Scale