



JOIN THESE RETAILERS



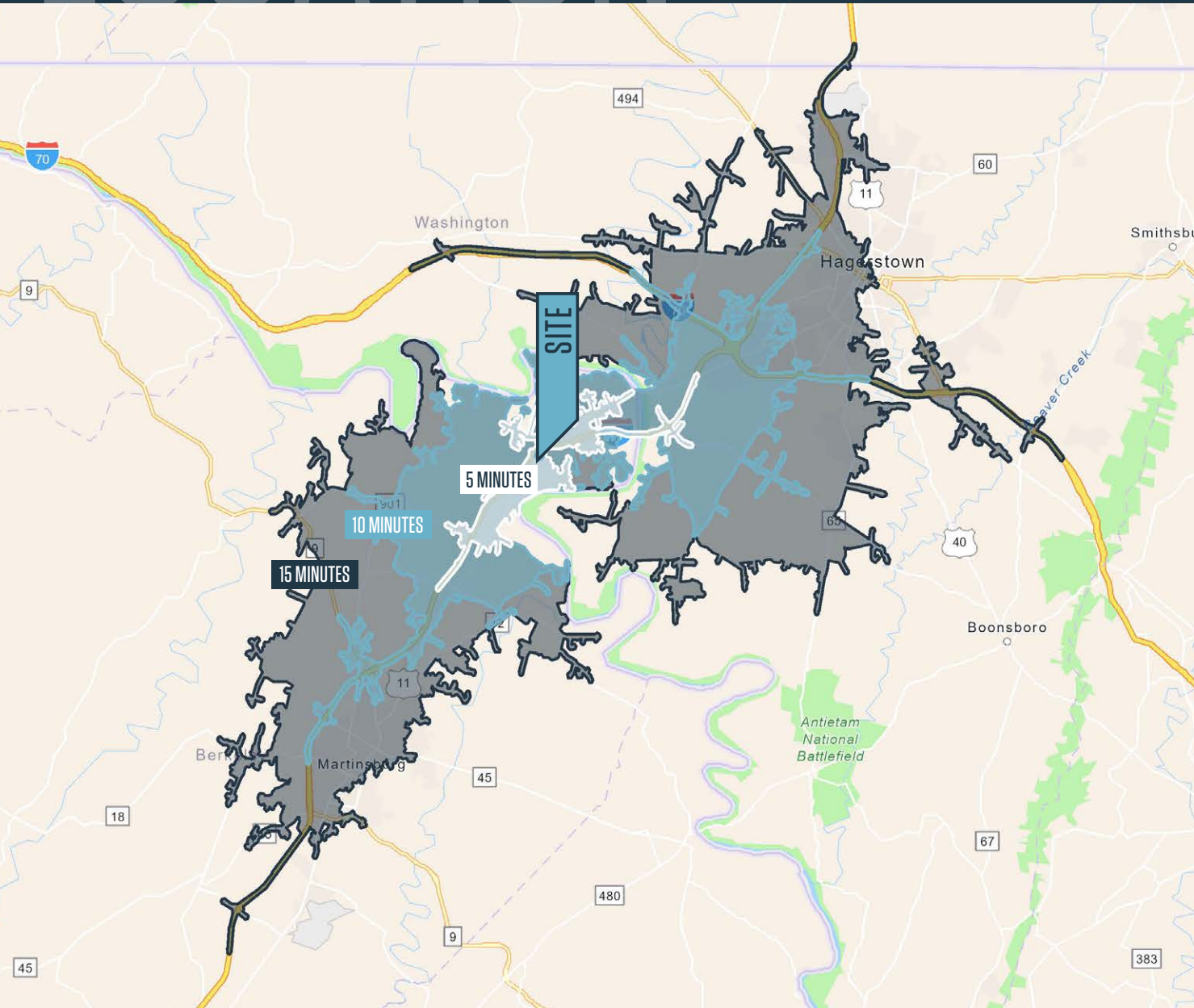
PAD SITES & NEW RETAIL AVAILABLE

- Join high volume grocery anchored center (existing retail is 100% leased), adjacent to 613 new residential units (308 apartments, 115 single family, and 190 townhomes)
- Three separate pad opportunities available - ideal for fast food, financial institutions and medical
- New retail available next to Food Lion
- Large multi-panel pylon

LOCATION

RIVERSIDE MARKETPLACE

78 WORCHESTER DRIVE, FALLING WATERS, WV 25419, BERKELEY COUNTY



DEMOGRAPHICS | 2022:

5-MINUTES	10-MINUTES	15-MINUTES
Population		
3,490	27,643	105,980
Daytime Population		
2,495	29,686	115,581
Households		
1,477	10,857	41,891
Average HH Income		
\$94,010	\$91,172	\$81,444

[CLICK TO DOWNLOAD DEMOGRAPHIC REPORT](#)

TRAFFIC COUNTS | 2021:

Williamsport Pike	8,396 ADT
I-81	62,256 ADT

RACHEL KLEIN

rklein@klnb.com | 443-632-2087

JOE FLEISCHMANN

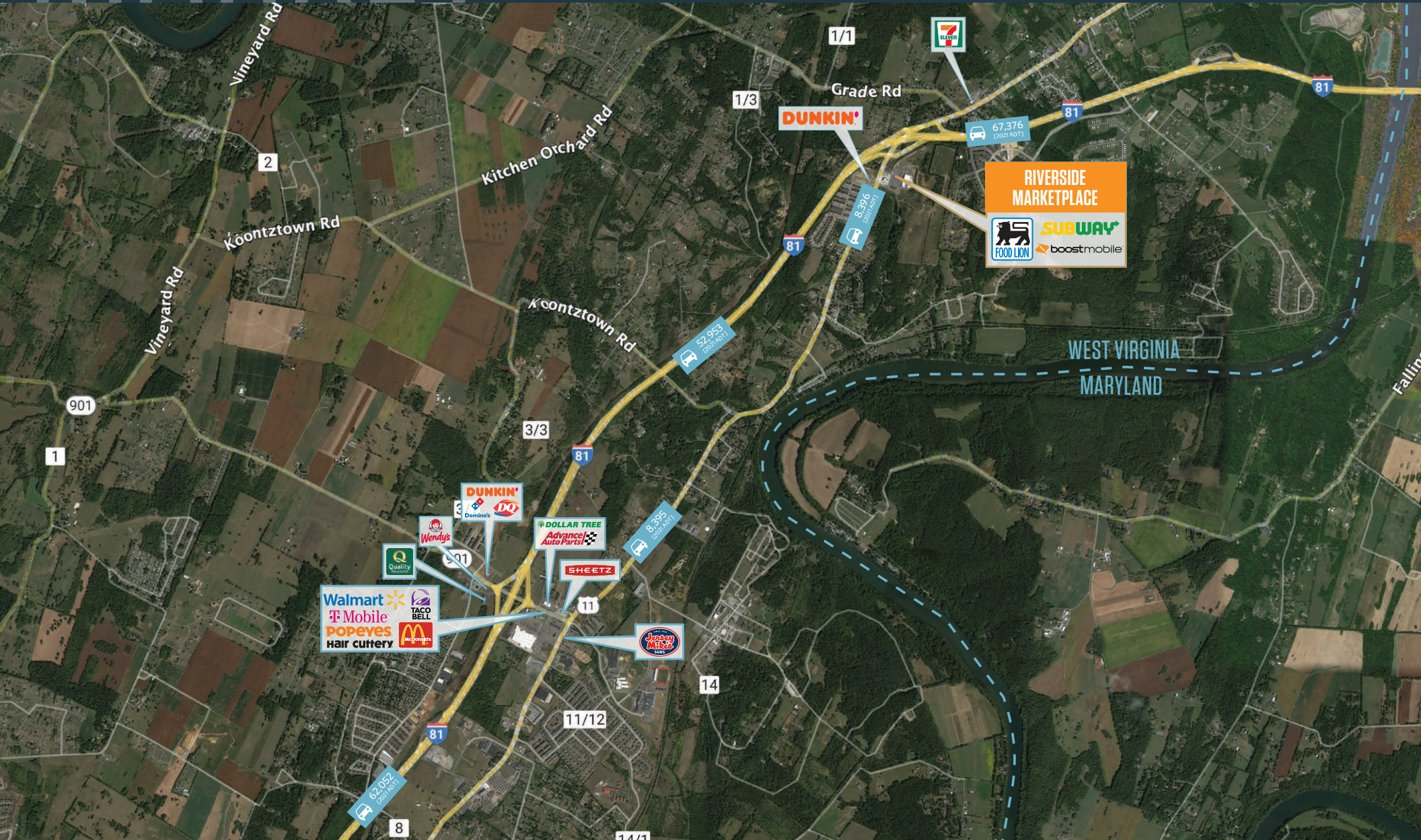
jfleischmann@klnb.com | 703-268-2708



MARKET

RIVERSIDE MARKETPLACE

78 WORCHESTER DRIVE, FALLING WATERS, WV 25419, BERKELEY COUNTY



RACHEL KLEIN

rklein@klnb.com | 443-632-2087

JOE FLEISCHMANN

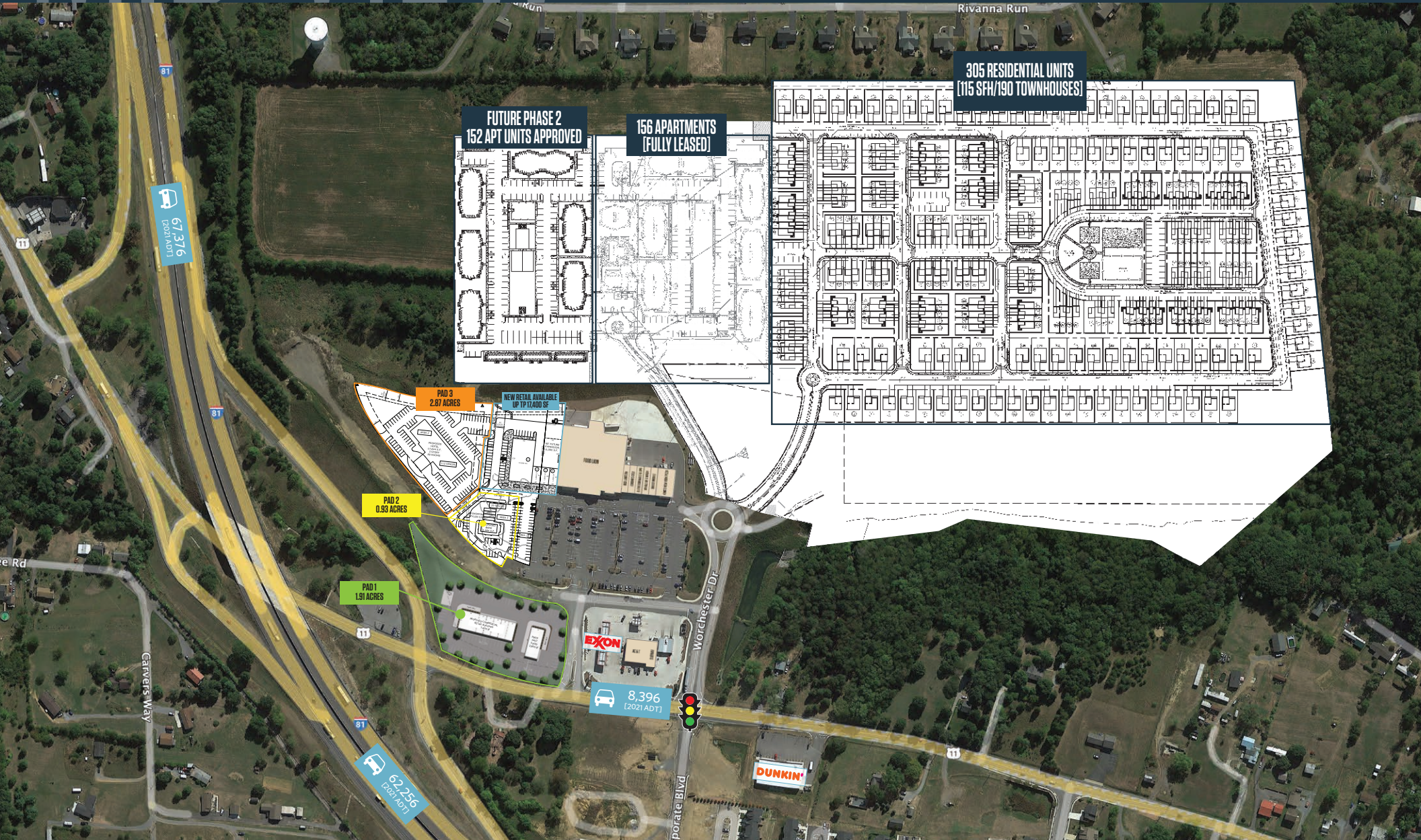
jfleischmann@klnb.com | 703-268-2708



MID-VIEW

RIVERSIDE MARKETPLACE

78 WORCHESTER DRIVE, FALLING WATERS, WV 25419, BERKELEY COUNTY



RACHEL KLEIN
rklein@klnb.com | 443-632-2087

JOE FLEISCHMANN
jfleischmann@klnb.com | 703-268-2708



CLOSE-UP

RIVERSIDE MARKETPLACE

78 WORCHESTER DRIVE, FALLING WATERS, WV 25419, BERKELEY COUNTY



RACHEL KLEIN

rklein@klnb.com | 443-632-2087

JOE FLEISCHMANN

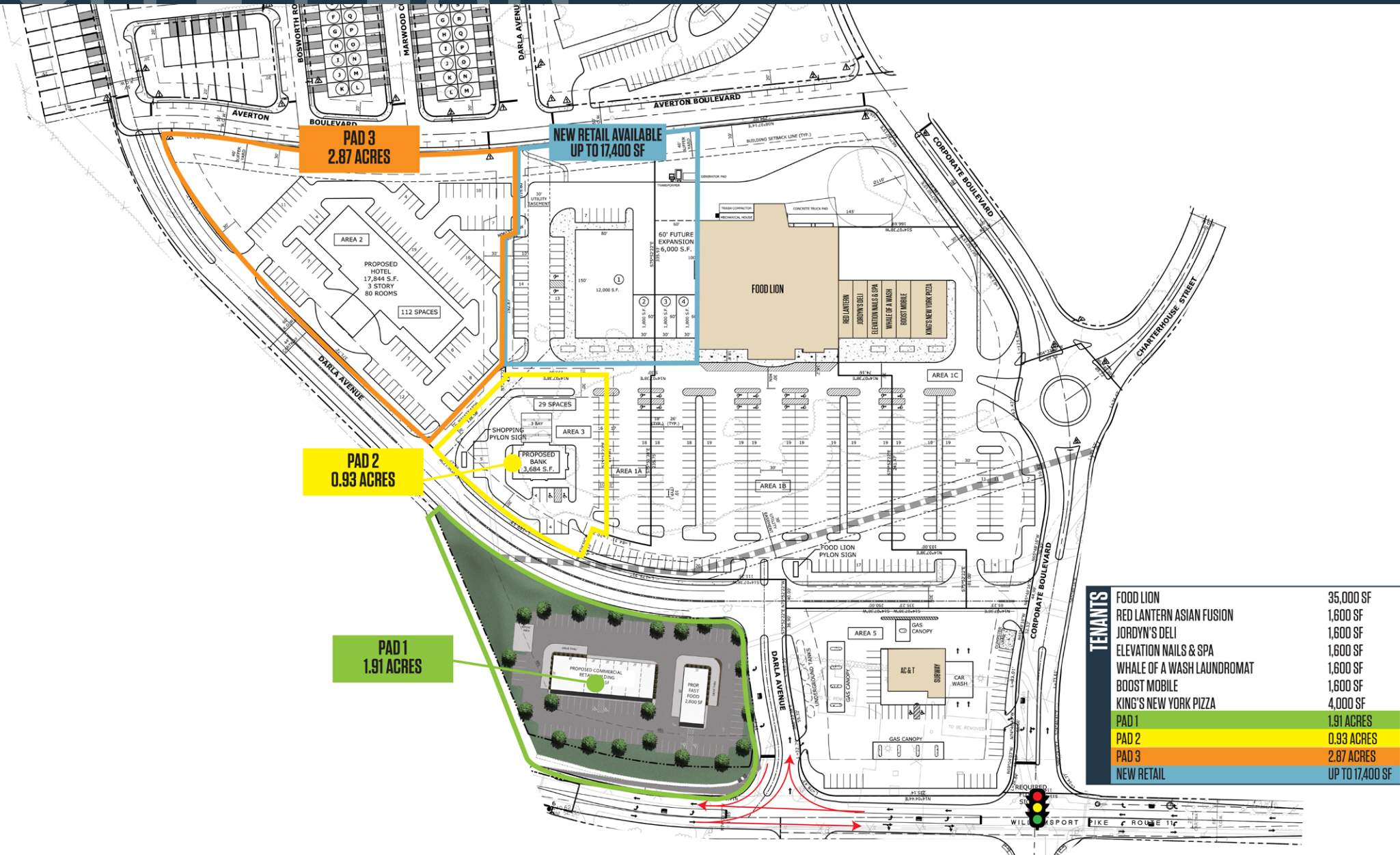
jfleischmann@klnb.com | 703-268-2708



SITE PLAN

RIVERSIDE MARKETPLACE

78 WORCHESTER DRIVE, FALLING WATERS, WV 25419, BERKELEY COUNTY



TENANTS	FOOD LION	RED LANTERN ASIAN FUSION	JORDYN'S DELI	ELEVATION NAILS & SPA	WHALE OF A WASH LAUNDROMAT	BOOST MOBILE	KING'S NEW YORK PIZZA	PAD 1	PAD 2	PAD 3	NEW RETAIL
	35,000 SF	1,600 SF	1,600 SF	1,600 SF	1,600 SF	1,600 SF	4,000 SF	1.91 ACRES	0.93 ACRES	2.87 ACRES	UP TO 17,400 SF

RACHEL KLEIN

rklein@klnb.com | 443-632-2087

JOE FLEISCHMANN

jfleischmann@klnb.com | 703-268-2708





RIVERSIDE MARKETPLACE

78 WORCHESTER DRIVE, FALLING WATERS, WV 25419, BERKELEY COUNTY

FOR MORE INFORMATION, PLEASE CONTACT:

RACHEL KLEIN

rklein@klnb.com
443-632-2087

JOE FLEISCHMANN

jfleischmann@klnb.com
703-268-2708

100 West Road, Suite 505, Towson, MD 21204

.....

klnb.com

 facebook.com/KLNB

 [@KLNBLLC](https://twitter.com/KLNBLLC)

 linkedin.com/company/klnb

 instagram.com/klnbllc

CLICK TO VIEW PROPERTY WEBSITE

While we have no reason to doubt the accuracy of any of the information supplied, we cannot, and do not, guarantee its accuracy. All information should be independently verified prior to a purchase or lease of the property. We are not responsible for errors, omissions, misuse, or misinterpretation of information contained herein and make no warranty of any kind, express or implied, with respect to the property or any other matters.