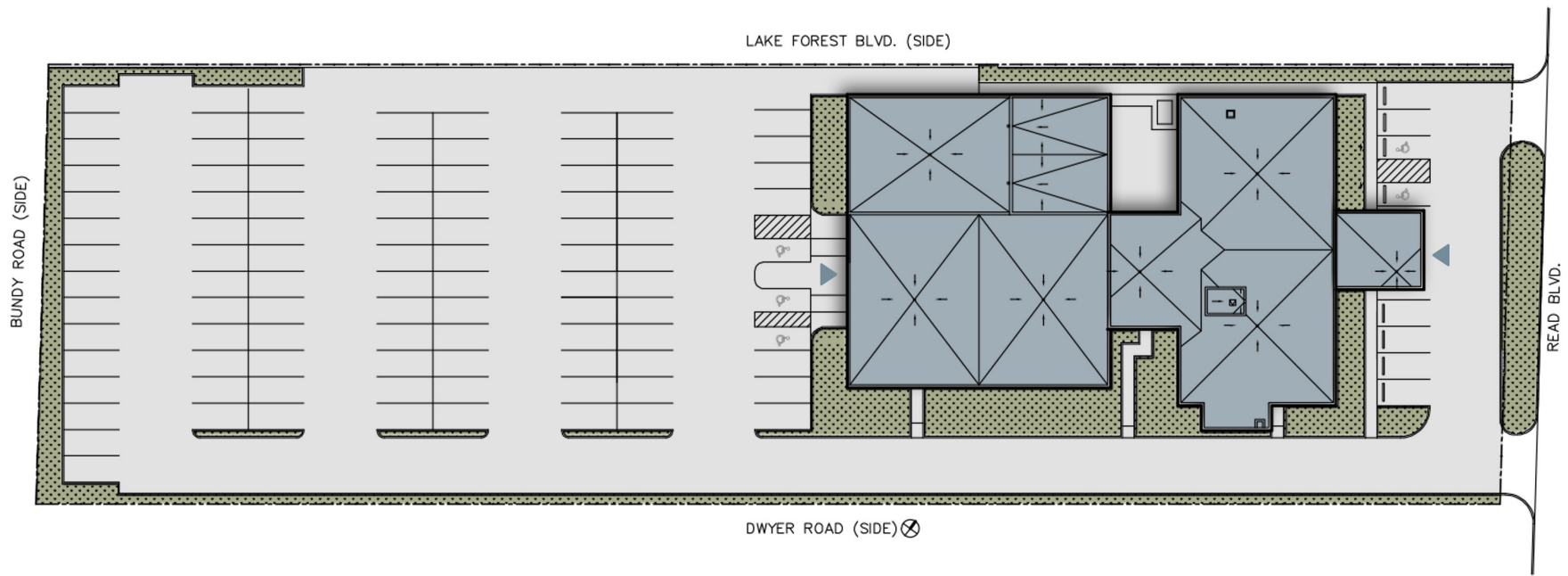


5650 Read Blvd | New Orleans, La  
Site Plan



# 5650 Read Blvd | New Orleans, La

Floor 1 (Approx. 16,000 SF)



## Legend

- Proposed Business Areas
- Common Areas
- Equipment Rooms
- Entrance / Exit

# 5650 Read Blvd | New Orleans, La

## Floor 1



1st Floor Hall



1st Floor Hall



1st Floor Rear



1st Floor Equip Rm

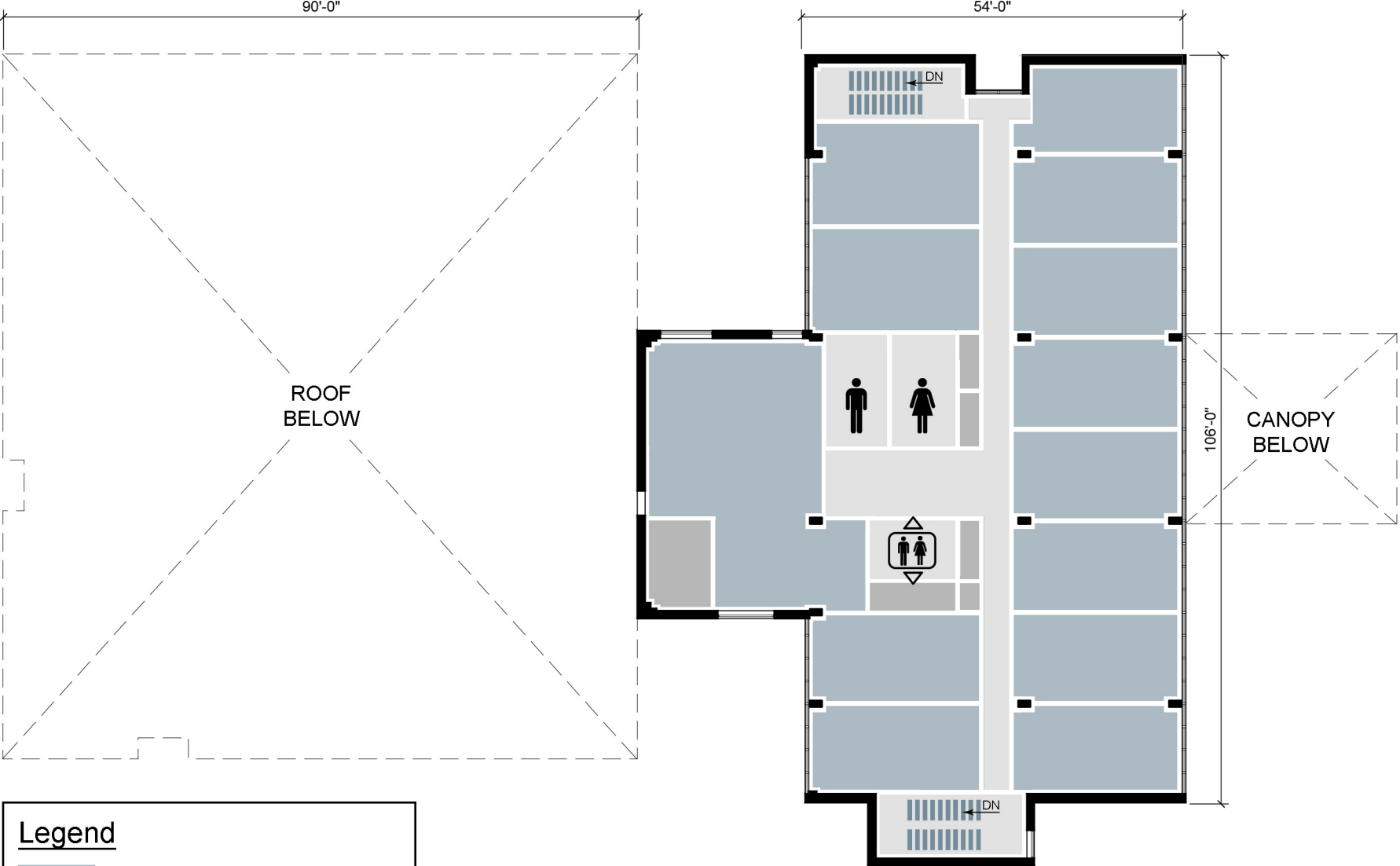


1st Floor Roof



# 5650 Read Blvd | New Orleans, La

Floor 2 (Approx. 7,000 SF)



**Legend**

- Proposed Business Areas
- Common Areas
- Equipment Rooms
- Entrance / Exit

# 5650 Read Blvd | New Orleans, La

## Floor 2



2nd Floor



2nd Floor



Men's RR (typ)  
- Floors 2-6



2nd Floor



AC unit -  
Floors 2-6



Women's RR (typ)  
- Floors 2-6



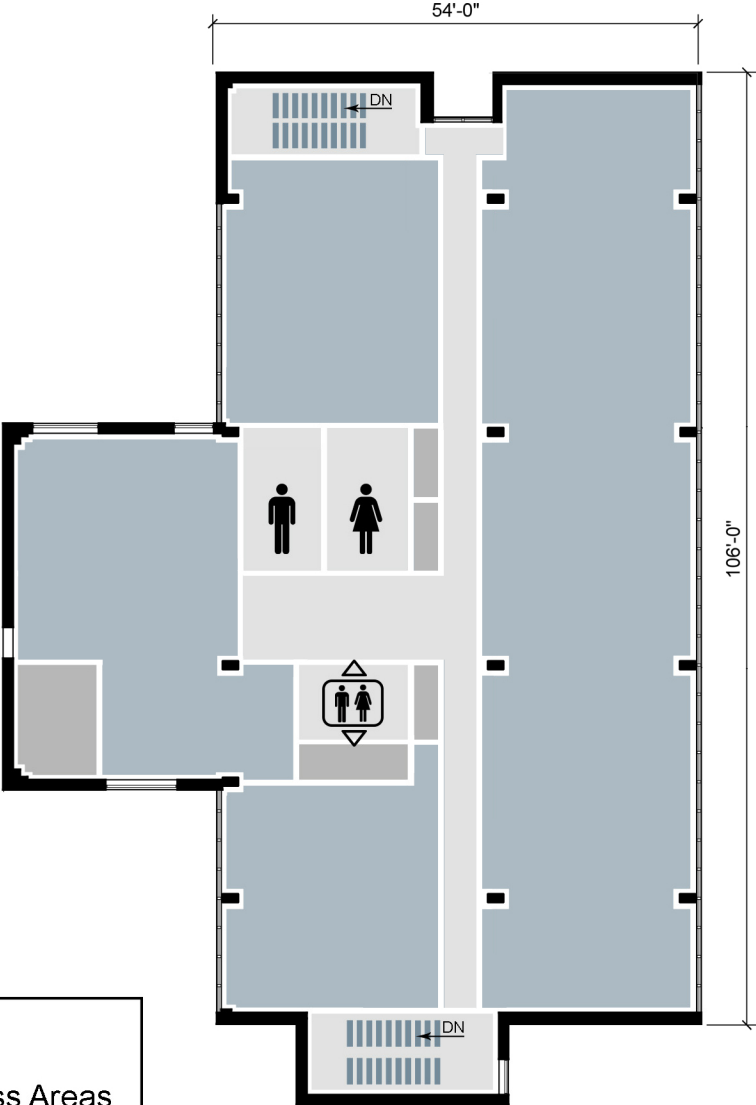
2nd Floor

UNITED COOLAIR CORPORATION YORK, PA	
MODEL NO.	V22R32AT4E-C
SERIAL NUMBER	159110
VOLTS	208-230 PHASE 3 CYCLE 60
COMP. LRA	230 EA QTY 2 RLA 33.3 EA
EVAP. MOTOR HP	5.0 FLA 13.8
COND. MOTOR HP	7.5 FLA 19.8
SCCR 5 EA	ELEC. HEATER KW 45
	HUMIDIFIER A 50A
POWER # 1	MCA 108.1
(COMP + COND. MOTOR + EVAP. MOTOR)	MOP 140
POWER # 2	MCA 147.8
(HEATER ONLY)	MOP 150
FACTORY CHARGE R-410A	
13 LB 8 OZ	CKT 1
13 LB 8 OZ	CKT 2

# 5650 Read Blvd | New Orleans, La

## Floor 3

Approx. 7,000 SF/floor



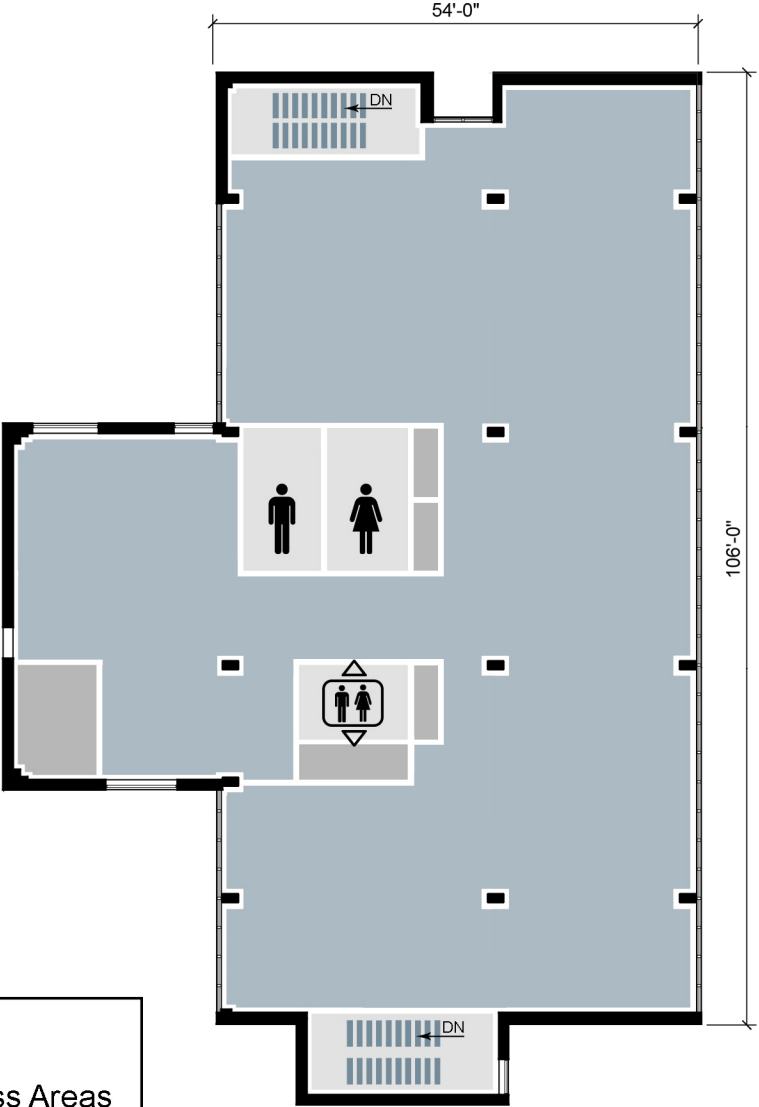
**Legend**

- Proposed Business Areas
- Common Areas
- Equipment Rooms
- Entrance / Exit



# 5650 Read Blvd | New Orleans, La

Floors 4 thru 6  
Approx. 7,000 SF/floor



**Legend**

- Proposed Business Areas
- Common Areas
- Equipment Rooms
- Entrance / Exit



4th Floor



5th Floor



6th Floor

