



The Boston Building

9 E. EXCHANGE PL.
SALT LAKE CITY, UT 84111

NEWMARK



MOUNTAIN WEST

Turnkey Solution, Complete with FFE as Shown – Available Today!

CONTACT:

Jeff Rossi

Executive Managing Director

t 801-578-5508

jrossi@newmarkmw.com

Trigger Reital

Executive Managing Director

t 801-578-5507

treital@newmarkmw.com

16,605

Total square feet available
Second floor: 7,905 SF
Ninth floor: 8,700 SF

84

Seats available per floor

\$19.95

PSF, full service
\$1.00 annual increases

<1

Block to TRAX light rail

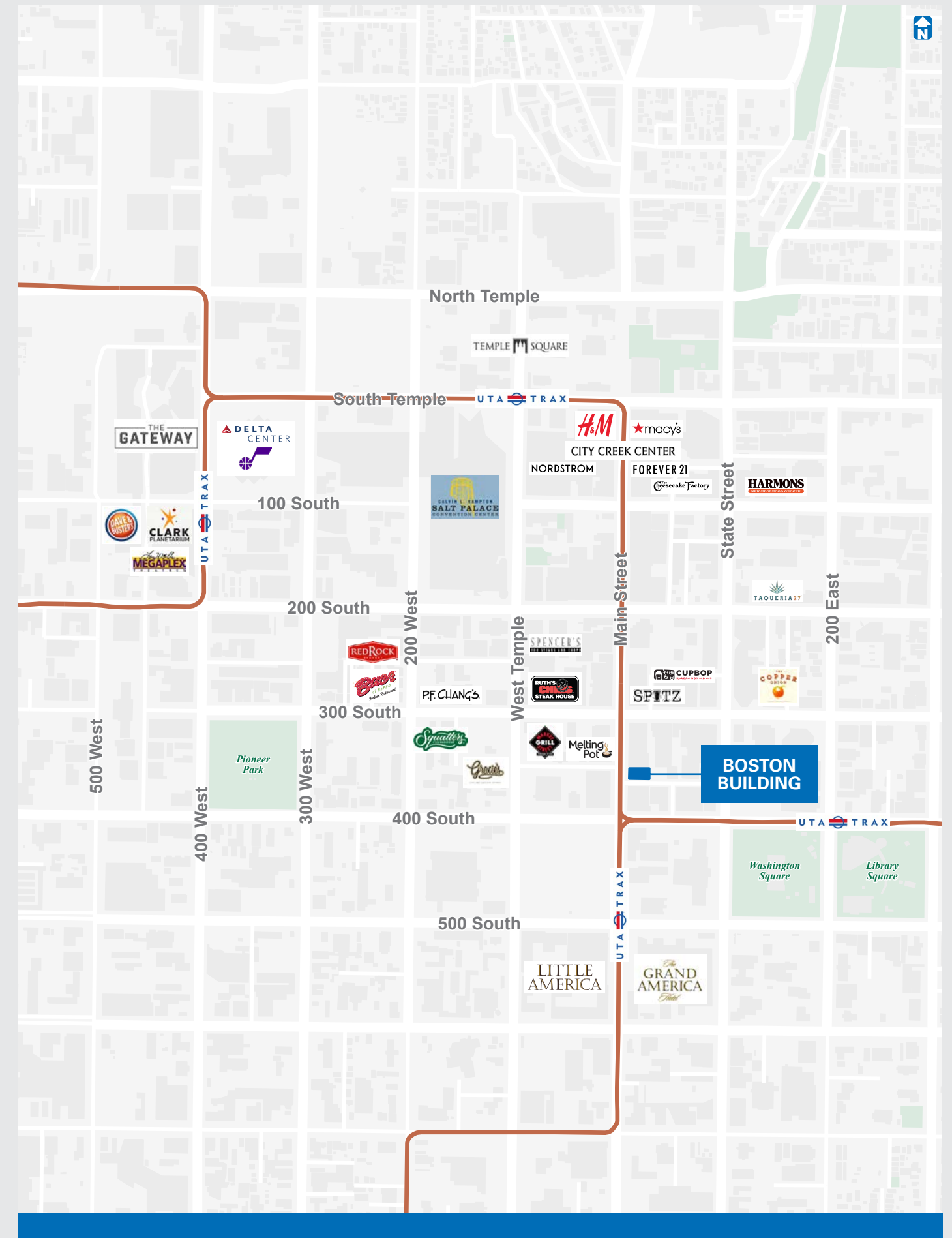
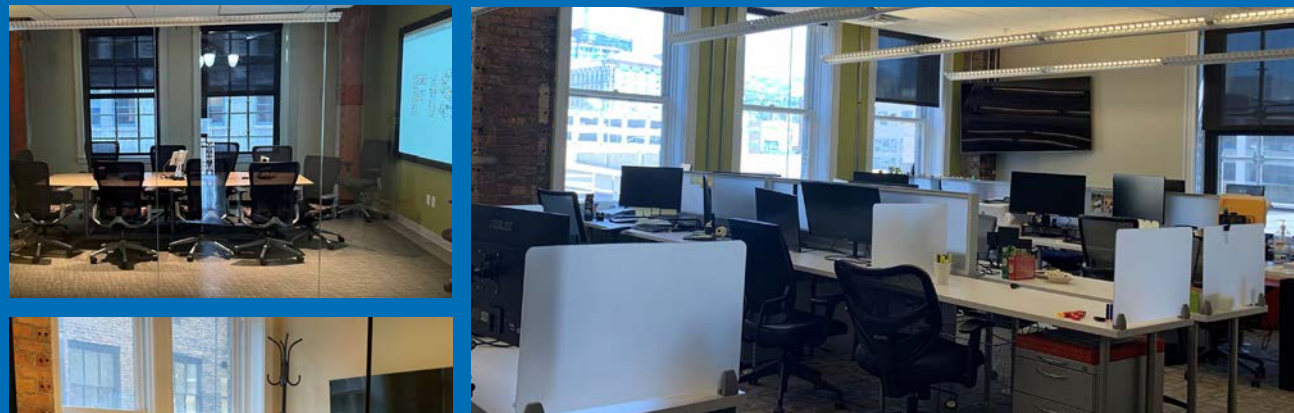
10/31/27

Lease expiration date
Will consider a shorter
term

50

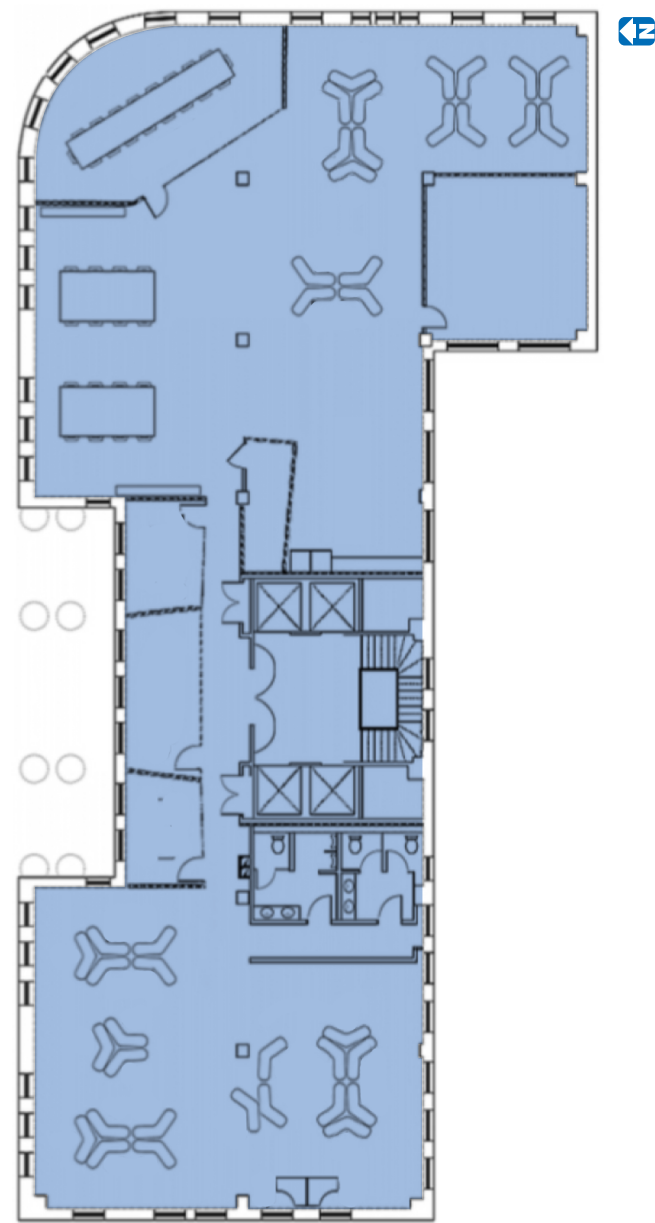
Walkable restaurants
within five minutes

Complete with FFE as Shown



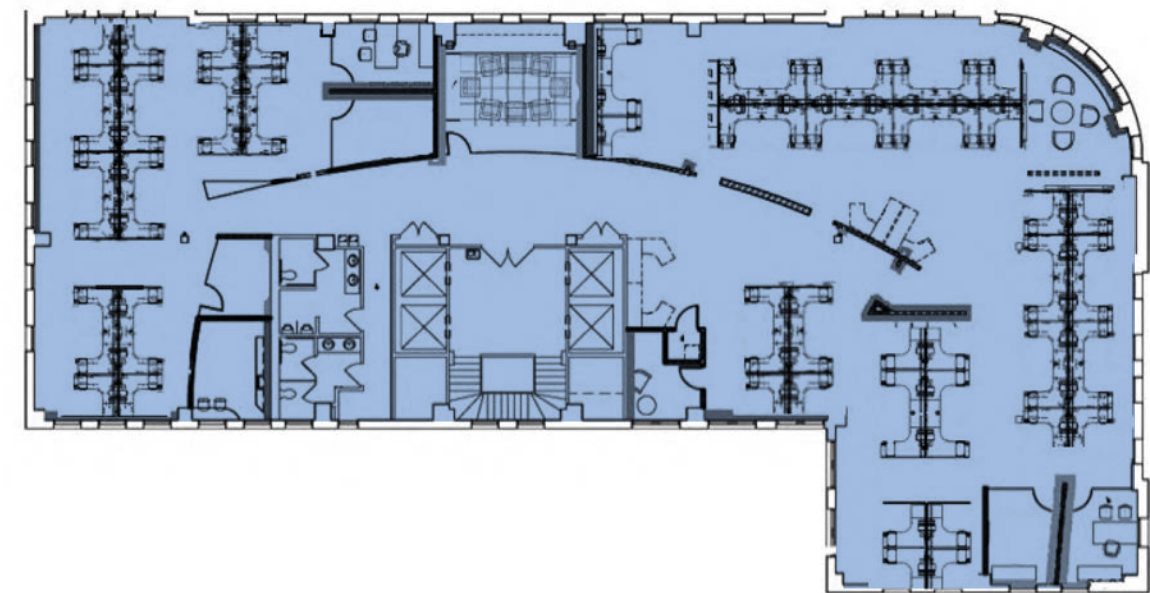
Floor Plan

SECOND FLOOR

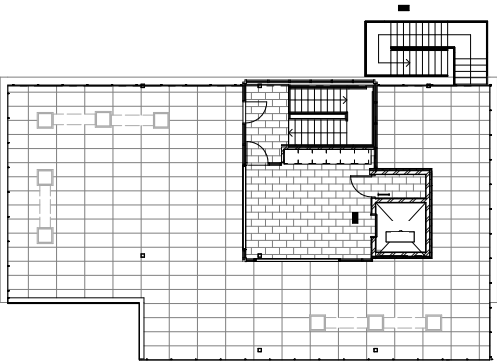


Floor Plan

NINTH FLOOR



ROOFTOP TERRACE



The Boston Building

9 E. EXCHANGE PL.
SALT LAKE CITY, UT 84111

For information, please contact:

Jeff Rossi

Executive Managing Director

t 801-578-5508

jrossi@newmarkmw.com

Trigger Reital

Executive Managing Director

t 801-578-5507

treital@newmarkmw.com

The information contained herein has been obtained from sources deemed reliable but has not been verified and no guarantee, warranty or representation, either express or implied, is made with respect to such information. Terms of sale or lease and availability are subject to change or withdrawal without notice.