

1600 BROMMER ST.

FOR SALE

Santa Cruz, CA

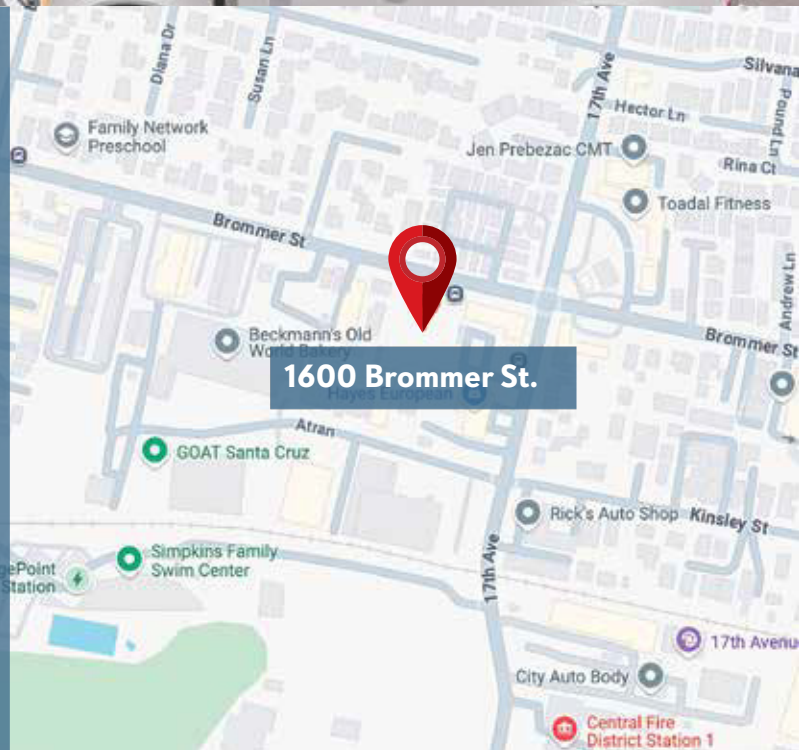
\$2,588,000



Property Highlights

- Approximately 5,000 sq. ft. of Commercial/Retail Space
- Mixed Use Development Parcel with Preliminary Design for 58 Residential Units
- 37,418 SF/.85 Acre Parcel
- On a Santa Cruz Transit Corridor

Information presented in this proforma was provided by the Seller. Shoemaker Commercial makes no representation as to the accuracy of the information. Buyer should use diligence investigating the financial feasibility in making a purchase or lease by relying on his or her own professional advisors.



Chris Shoemaker, CCIM

Broker/Owner

Cell: 831.247.2647

chris@shoemakercommercial.com

shoemakercommercial.com

CalBRE# 01760812



Frank Oliver

Broker/Owner

Oliver Group

Cell: 408.472.4700

frank@olivergroupsv.com

DRE# 00491292



This brochure has been prepared to provide summary information to prospective purchasers and to establish a preliminary level of interest in the property presented. It does not, however, purport to present all material information regarding the subject property, and it is not a substitute for thorough due diligence investigation. In particular, neither Shoemaker Commercial Real Estate, Inc. nor Chris Shoemaker have made any investigation, and make no warranty or representation with respect to the financial condition or business prospects of any tenant, or any tenant's plans or intentions to continue or renew its occupancy of the subject property. The information contained in this brochure has been obtained from sources we believe to be reliable; however, neither Shoemaker Commercial Real Estate, Inc. nor Chris Shoemaker have conducted any investigation regarding these matters and make no warranty or representation whatsoever regarding the accuracy or completeness of the information provided.

I M P R O V E M E N T S , S I Z E A N D B O U N D A R I E S

Any oral or written representations by Seller or Broker regarding age of improvements, size and square footage of parcel, building, or location of property lines may not be accurate. Apparent boundary line indicators such as fences, hedges, walls or other barriers may not represent the true boundary lines, only a surveyor can determine the actual boundary lines. If any of these issues are important to the Buyer's decision to purchase, then the Buyer should consider investigating the property independently.



PROPERTY DESCRIPTION

1600 Brommer St, Santa Cruz, Ca

APN 026-311-22

ADDRESS 1600 Brommer St
Santa Cruz, CA 95062

PARCEL SIZE 37,418 sq. ft. / .85 Acre

CURRENT DESIGN 58 Residential Units,
Approximately 5,000 sq. ft.
Commercial / Retail

ZONING C-1



Information presented in this proforma was provided by the Seller. Shoemaker Commercial makes no representation as to the accuracy of the information. Buyer should use diligence investigating the financial feasibility in making a purchase or lease by relying on his or her own professional advisors.

shoemakercommercial.com

1600 Brommer St, Santa Cruz, Ca



Information presented in this proforma was provided by the Seller. Shoemaker Commercial makes no representation as to the accuracy of the information. Buyer should use diligence investigating the financial feasibility in making a purchase or lease by relying on his or her own professional advisors. shoemakercommercial.com

AERIAL PHOTO

1600 Brommer St, Santa Cruz, Ca



Information presented in this proforma was provided by the Seller. Shoemaker Commercial makes no representation as to the accuracy of the information. Buyer should use diligence investigating the financial feasibility in making a purchase or lease by relying on his or her own professional advisors. shoemakercommercial.com

PHOTOS

1600 Brommer St, Santa Cruz, Ca



Information presented in this proforma was provided by the Seller. Shoemaker Commercial makes no representation as to the accuracy of the information. Buyer should use diligence investigating the financial feasibility in making a purchase or lease by relying on his or her own professional advisors.

shoemakercommercial.com

1600 Brommer St, Santa Cruz, Ca

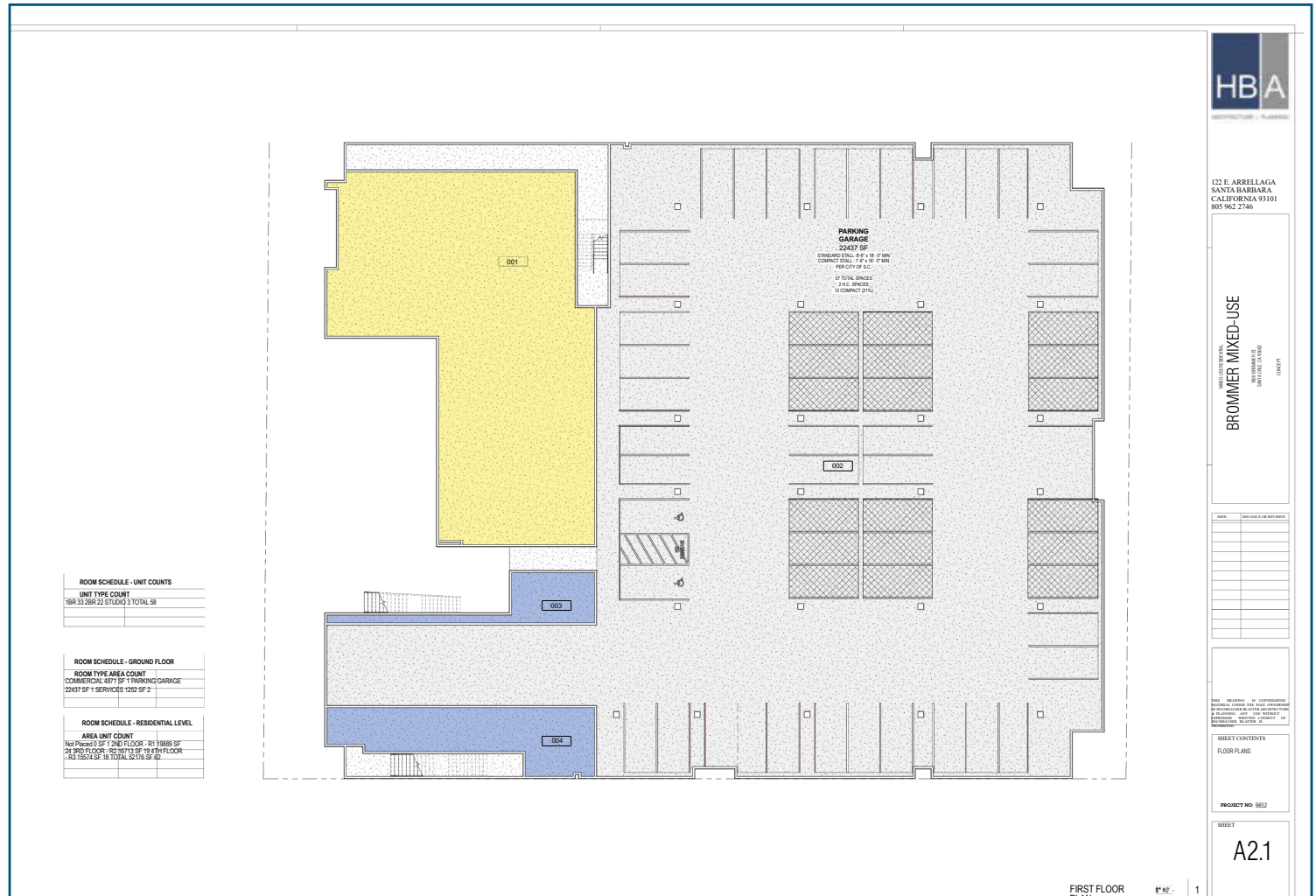


LEVEL	AREA	UNIT COUNT
See Floor	0.00	1
2ND FLOOR - 81	1098.97	24
3RD FLOOR - 82	1671.24	18
4TH FLOOR - 83	1074.97	18
TOTAL	3275.17	58



Information presented in this proforma was provided by the Seller. Shoemaker Commercial makes no representation as to the accuracy of the information. Buyer should use diligence investigating the financial feasibility in making a purchase or lease by relying on his or her own professional advisors. shoemakercommercial.com

1600 Brommer St, Santa Cruz, Ca



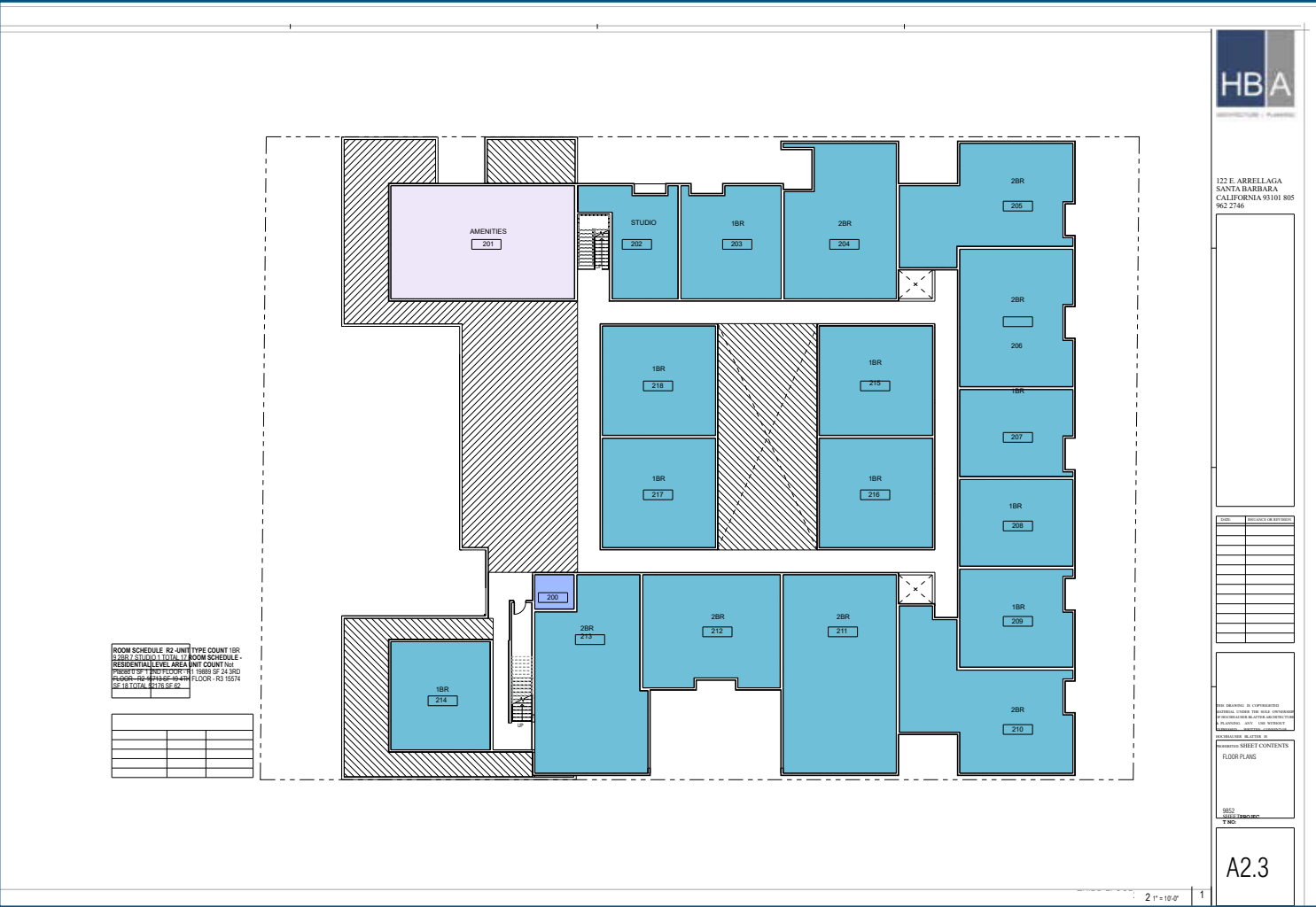
Information presented in this proforma was provided by the Seller. Shoemaker Commercial makes no representation as to the accuracy of the information. Buyer should use diligence investigating the financial feasibility in making a purchase or lease by relying on his or her own professional advisors. shoemakercommercial.com

PLANS 1600 Brommer St, Santa Cruz, Ca

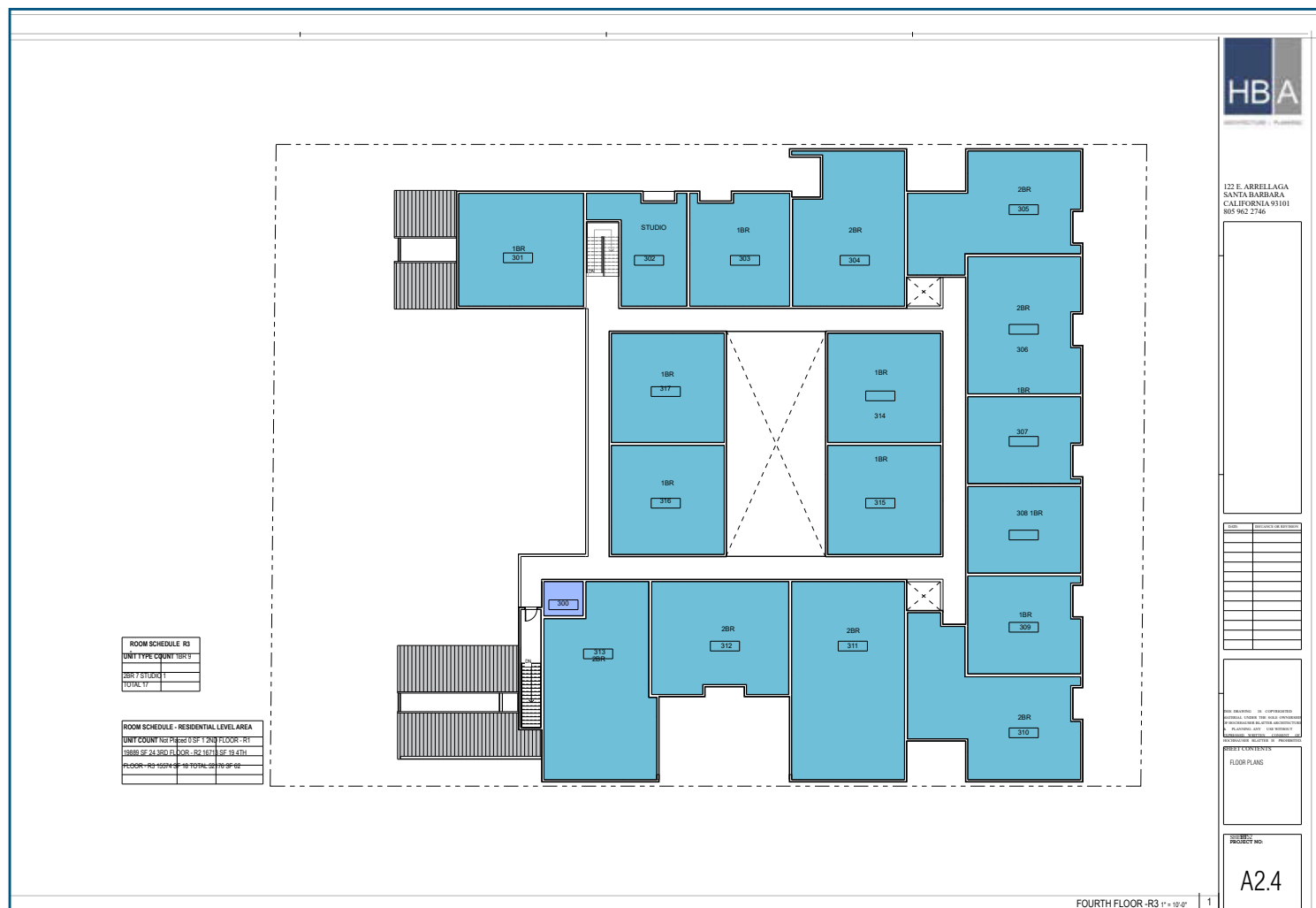


PLANS

1600 Brommer St, Santa Cruz, Ca



1600 Brommer St, Santa Cruz, Ca



Information presented in this proforma was provided by the Seller. Shoemaker Commercial makes no representation as to the accuracy of the information. Buyer should use diligence investigating the financial feasibility in making a purchase or lease by relying on his or her own professional advisors. shoemakercommercial.com

PLANS 1600 Brommer St, Santa Cruz, Ca

