



THOMAS LAKE CENTER

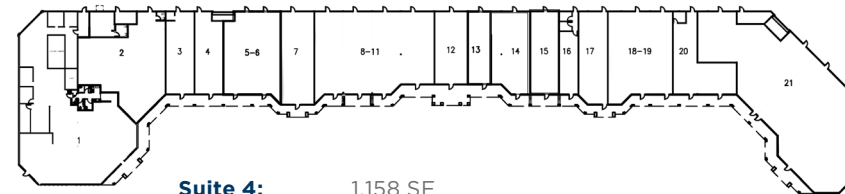
1565 CLIFF ROAD, EAGAN, MN

Retail Leasing

THOMAS LAKE CENTER

1565 Cliff Road, Eagan, MN

FOR LEASE



PROPERTY INFORMATION

Property Name: Thomas Lake Center
Description: Neighborhood Retail Center
Year Built: 1987
Building SF: 42,923 SF
Parking: 250 Surface Stalls
2024 Tax & CAM: \$4.43 PSF Tax
 \$5.58 PSF CAM
\$10.01 PSF Total



DEMOGRAPICS



**2023
Households**



**2023 Average
Household Income**



**2023 Daytime
Population**

	2023 Households	2023 Average Household Income	2023 Daytime Population
1 Mile	3,536	\$118,770	9,242
3 Miles:	26,611	\$123,066	68,638
5 Miles:	66,852	\$119,029	171,853



CURRENT TENANTS

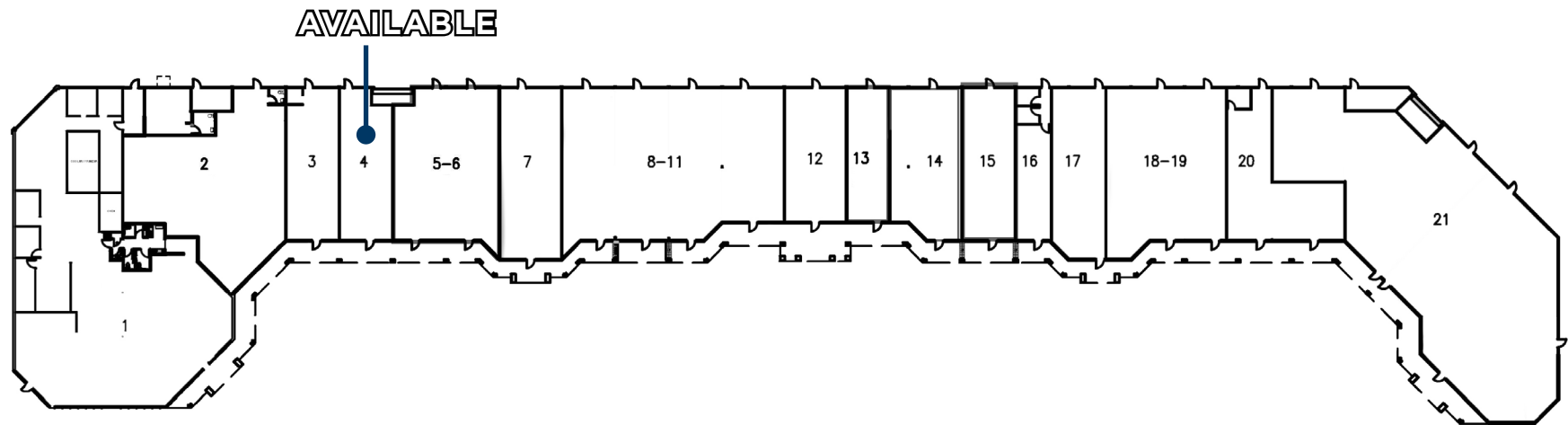
Cupcake/Mason Jar*
 24 Hour Golf
 Golden Star
 Simple Plan Meals*
 Kick Start Martial Arts
 Minnesota Labs
 Daulton Hair
 Pet Spa
 Sarpinos Pizza*
 TL Liquors
 Signature Nails
 Pellicci's Ace Hardware*
 Qawah Cafe
 Tobacco and Vape Co.
 Minnesota Labs

**Anchor Tenants*



SITE PLAN

1565 Cliff Road, Eagan, MN



SUITE	TENANT
Suite 1:	Cupcake/Mason Jar
Suite 2:	24 Hour Golf
Suite 3:	Golden Star
Suite 4:	AVAILABLE 1,158 SF
Suite 5 - 6:	Tobacco and Vape Co.
Suite 7:	Kick Start Martial Arts
Suite 8 - 11:	Lumira Childcare Center
Suite 12:	Daulton Hair

SUITE	TENANT
Suite 13:	Simple Plan Meals
Suite 14:	Minnesota Labs
Suite 15:	Qawah Cafe
Suite 16:	Pet Spa
Suite 17:	Sarpinos Pizza
Suite 18 - 19:	TL Liquors
Suite 20:	Signature Nails
Suite 21:	Pellicci's Ace Hardware

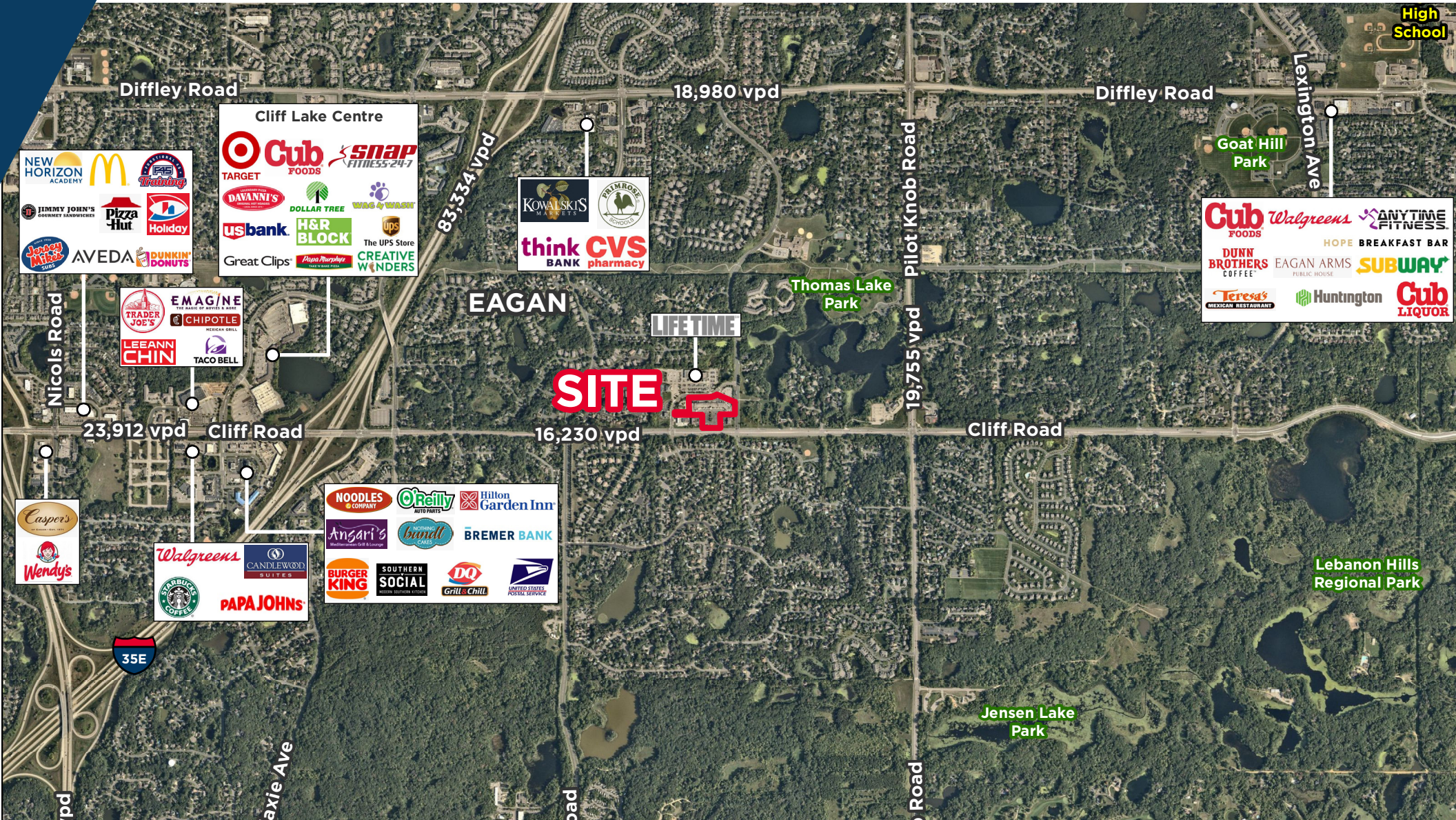
PROPERTY PHOTOS



AERIAL



AERIAL



15 65

MASON JAR
KITCHEN & BAR

MASON JAR
KITCHEN & BAR



William Melin, CCIM
Senior Director
+1 952 200 7890
william.melin@cushwake.com



Amber Vickerman
Associate
+1 763 302 9337
amber.vickerman@cushwake.com