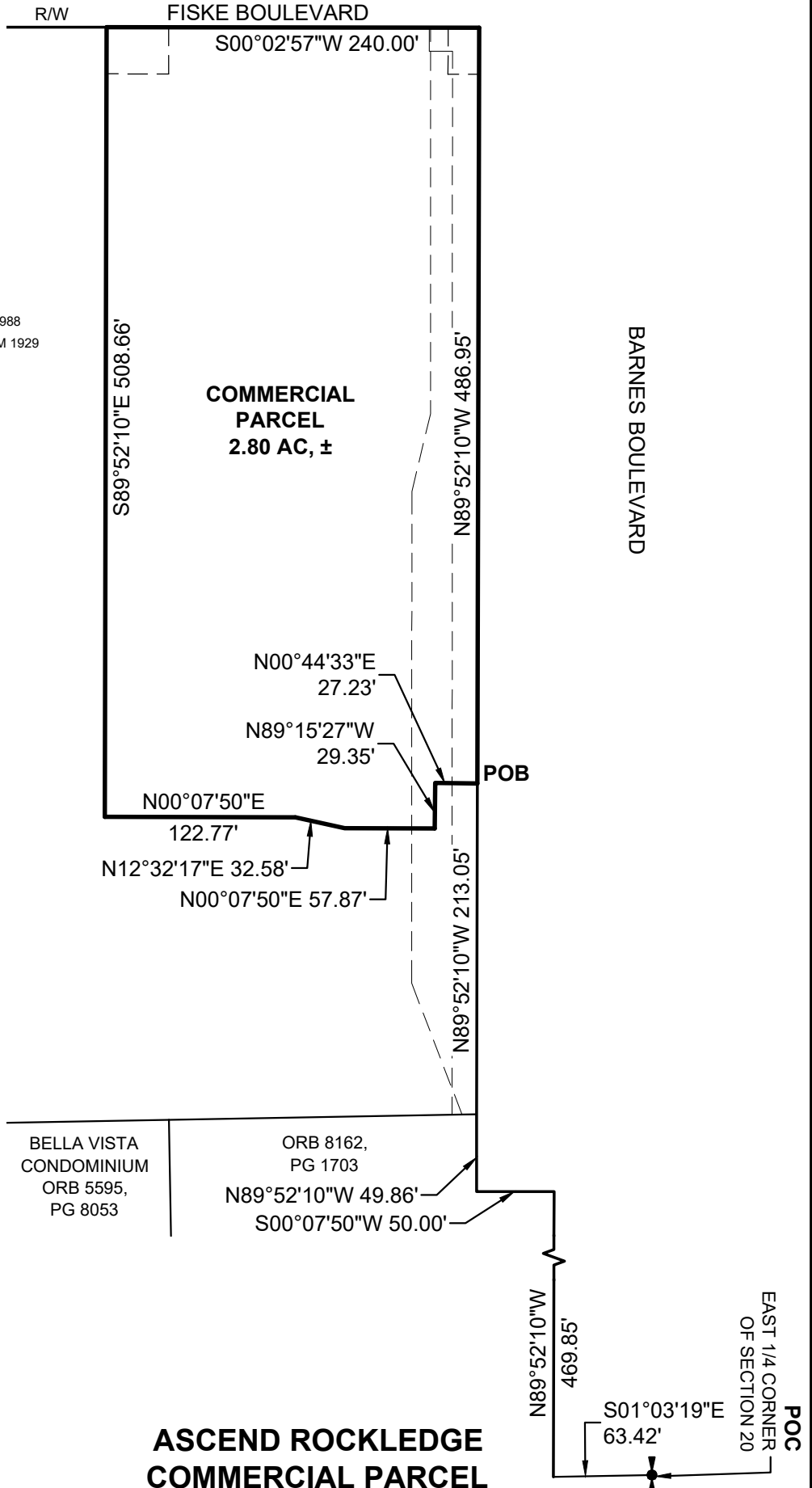


COMMERCIAL PARCEL

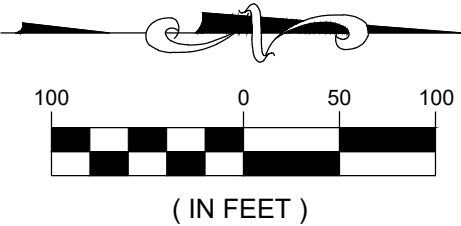
A PARCEL OF LAND LYING IN THE SOUTHEAST 1/4 OF SECTION 20, TOWNSHIP 25 SOUTH, RANGE 36 EAST, BREVARD COUNTY, FLORIDA, BEING MORE PARTICULARLY DESCRIBED AS FOLLOWS:

COMMENCE AT THE EAST 1/4 CORNER OF SAID SECTION 20, AND RUN S01°03'19"E, ALONG THE EAST LINE OF SAID SECTION 20, A DISTANCE OF 63.42 FEET, TO A POINT ON THE SOUTH RIGHT-OF-WAY LINE OF BARNES BOULEVARD (A 100 FOOT WIDE RIGHT-OF-WAY); THENCE N89°52'10"W, ALONG SAID SOUTH RIGHT-OF-WAY LINE, A DISTANCE OF 469.85 FEET; THENCE S00°07'50"W, ALONG THE SOUTH RIGHT-OF-WAY LINE OF BARNES BOULEVARD AS RECORDED IN OFFICIAL RECORDS BOOK 1094, PAGE 503, PUBLIC RECORDS OF BREVARD COUNTY, FLORIDA, A DISTANCE OF 50.00 FEET; THENCE N89°52'10"W, ALONG SAID SOUTH RIGHT-OF-WAY LINE, A DISTANCE OF 49.86 FEET; THENCE CONTINUE N89°52'10"W, ALONG SAID SOUTH RIGHT-OF-WAY LINE, A DISTANCE OF 213.05 FEET TO THE POINT OF BEGINNING OF THE PARCEL OF LAND HEREIN DESCRIBED; THENCE CONTINUE N89°52'10"W, ALONG SAID RIGHT-OF-WAY LINE, A DISTANCE OF 486.95 FEET TO AN INTERSECTION WITH THE EASTERLY RIGHT-OF-WAY LINE OF FISKE BOULEVARD AS RECORDED IN SAID OFFICIAL RECORDS BOOK 1094, PAGE 503; THENCE S00°02'57"W, ALONG SAID EASTERLY RIGHT-OF-WAY LINE, A DISTANCE OF 240.00 FEET; THENCE S89°52'10"E A DISTANCE OF 508.66 FEET; THENCE N00°07'50"E A DISTANCE OF 122.77 FEET; THENCE N12°32'17"E A DISTANCE OF 32.58 FEET; THENCE N00°07'50"E A DISTANCE OF 57.87 FEET; THENCE N89°15'27"W A DISTANCE OF 29.35 FEET; THENCE N00°44'33"E A DISTANCE OF 27.23 FEET TO THE POINT OF BEGINNING. CONTAINING 2.80 ACRES, MORE OR LESS.



ABBREVIATIONS

- AL ARC LENGTH
- CB CHORD BEARING
- CH CHORD LENGTH
- DEL DELTA / CENTRAL ANGLE
- ESMT EASEMENT
- FT FEET
- NAVD88 NORTH AMERICAN VERTICAL DATUM 1988
- NGVD29 NATIONAL GEODETIC VERTICAL DATUM 1929
- OR/ORB OFFICIAL RECORDS BOOK
- PB PLAT BOOK
- PG(S) PAGE(S)
- POB POINT OF BEGINNING
- POC POINT OF COMMENCEMENT
- R RADIUS
- R/W RIGHT-OF-WAY
- ST STREET
- TYP TYPICAL



**ASCEND ROCKLEDGE
COMMERCIAL PARCEL**



B.S.E. CONSULTANTS, INC.
 CONSULTING - ENGINEERING - LAND SURVEYING
 312 SOUTH HARBOR CITY BOULEVARD, SUITE 4 MELBOURNE, FL 32901
 PHONE: (321) 725-3674 FAX: (321) 723-1159
 CERTIFICATE OF BUSINESS AUTHORIZATION: 4905
 CERTIFICATE OF LAND SURVEYING BUSINESS AUTHORIZATION: LB0004905

DATE: 03/08/2022
 DESIGN/DRAWN: LEH/IT
 DRAWING# 11594_100_003
 PROJECT# 11594
 SHEET 1 OF 1