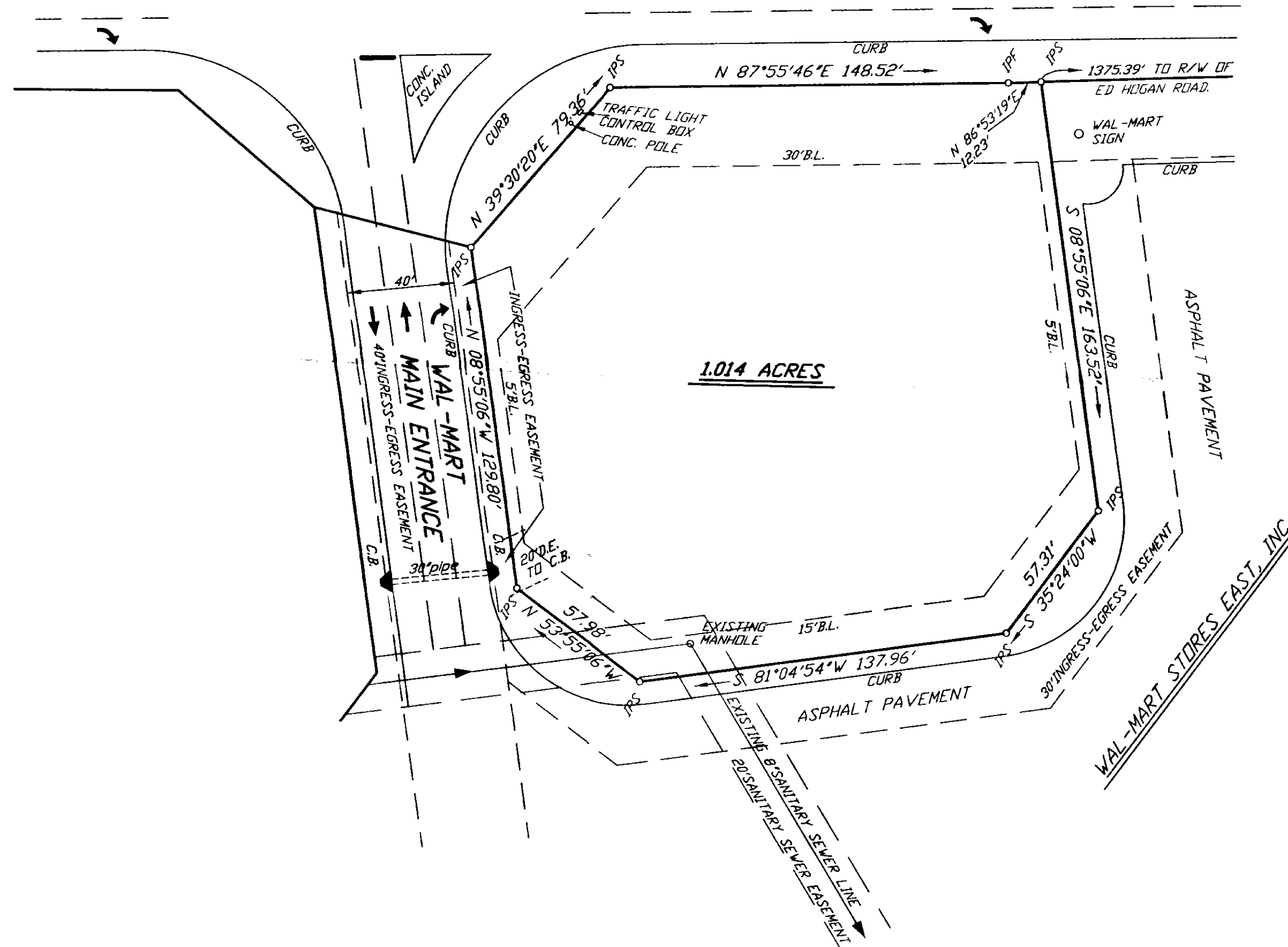


GA. HWY. #8 (PAVED) R/W VARIES



1.014 ACRES

APPROVED  
BARROW COUNTY  
PLANNING DEPT.

GEORGIA  
REGISTERED  
1977  
PROFESSIONAL  
SURVEYOR  
W. T. DUNAHOO

A TOPCON GTS-2B TOTAL STATION was used to obtain the linear and angular measurements used in the preparation of this plat.

The field data upon which this plat is based has a closure precision of one foot in 29,600 feet and an angular error of 2" per angle point and was adjusted using the COMPASS rule.

This survey has been calculated for closure and is found to be accurate within one foot in 109,604 feet.

SURVEY FOR		STATE OF GEORGIA		
<b>WAYNE BARTLETT</b>				
CITY	GMD	COUNTY	SCALE	DATE
	243	BARROW	1"=40'	9-22-2003
W. T. DUNAHOO AND ASSOCIATES				
P.O. BOX 183 302 W. MAY STREET		PH: (770) 867-3911		WINDER, GEORGIA

IPF - IRON PIN FOUND  
IPS - IRON PIN SET (1/2"O.T.)

