

# New Sublease Space Available

111 Sutter Street, Suite 1950  
San Francisco, CA

## Space Profile:

<b>Premises</b>	19th Floor
<b>RSF</b>	7,459 RSF
<b>Rental Rate</b>	Please Inquire
<b>Availability</b>	Vacant with spec improvements underway
<b>Term</b>	Thru 5/31/2029



## Features:

- Good setbacks and natural light
- High, exposed ceilings
- Warm shell condition turn-key improvements available
- Close to BART

## Contact for more information or tour:

**Will Scovill**  
415.515.7198  
wscovill@cresa.com  
BRE# 01751649



## 111 Sutter Street

San Francisco, CA

Contact for more  
information or tour:

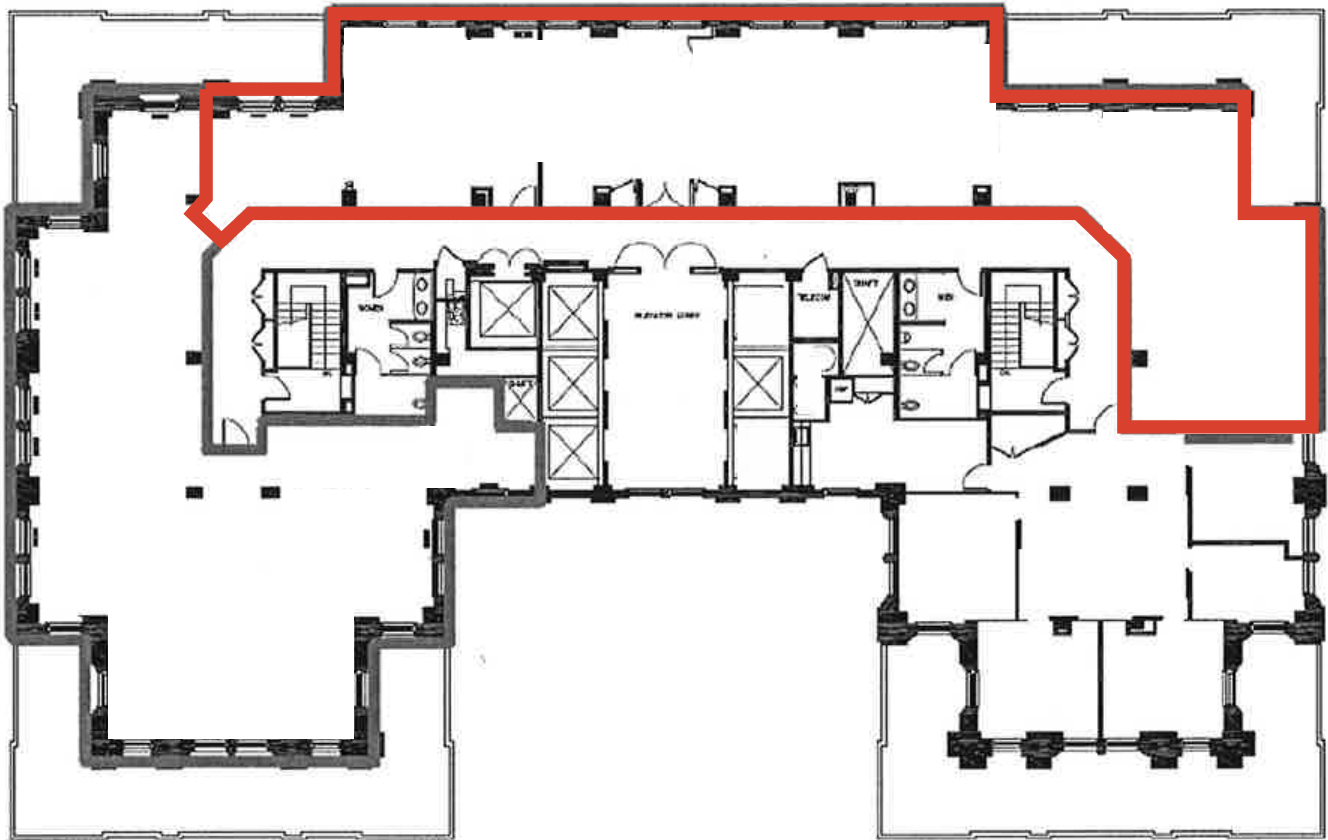
**Will Scovill**  
415.515.7198  
wscovill@cresa.com  
BRE# 01751649



**cresa**

Cresa © 2020. All rights reserved. The information contained in this document has been obtained from sources believed reliable. While Cresa does not doubt its accuracy, Cresa has not verified it and makes no guarantee, warranty, or representation about it. It is your responsibility to independently confirm its accuracy and completeness. Any projections, opinions, assumptions or estimates used are for example only and do not represent the current or future performance of the property. The value of this transaction to you depends on tax and other factors which should be evaluated by your tax, financial and legal advisors. You and your advisors should conduct a careful, independent investigation of the property to determine to your satisfaction the suitability of the property for your needs.

**111 Sutter Street**  
**San Francisco, CA**



Cresa © 2020. All rights reserved. The information contained in this document has been obtained from sources believed reliable. While Cresa does not doubt its accuracy, Cresa has not verified it and makes no guarantee, warranty, or representation about it. It is your responsibility to independently confirm its accuracy and completeness. Any projections, opinions, assumptions or estimates used are for example only and do not represent the current or future performance of the property. The value of this transaction to you depends on tax and other factors which should be evaluated by your tax, financial and legal advisors. You and your advisors should conduct a careful, independent investigation of the property to determine to your satisfaction the suitability of the property for your needs.

**Contact for more information or tour:**

**Will Scovill**  
415.515.7198  
wscovill@cresa.com  
BRE# 01751649