



# Commerce Bank Office Space for Lease

**110 NW BARRY ROAD  
KANSAS CITY, MISSOURI**

## Property Highlights

- Attractive, well-maintained, and owner occupied building
- Near restaurants and retail
- 68 free surface spaces: 4.00/1,000 sf
- Signage available
- Lease rate of \$15.00/sf, full service

## Available Spaces

- Suite 205: 1,123 SF

*For information, please contact:*

**Richard H. Chamberlain**

*Managing Director, Principal*

t 816-268-4222

rchamberlain@nzimmer.com

1220 Washington Street, Suite 300  
Kansas City, MO 64105

[nrmkzimmer.com](http://nrmkzimmer.com)

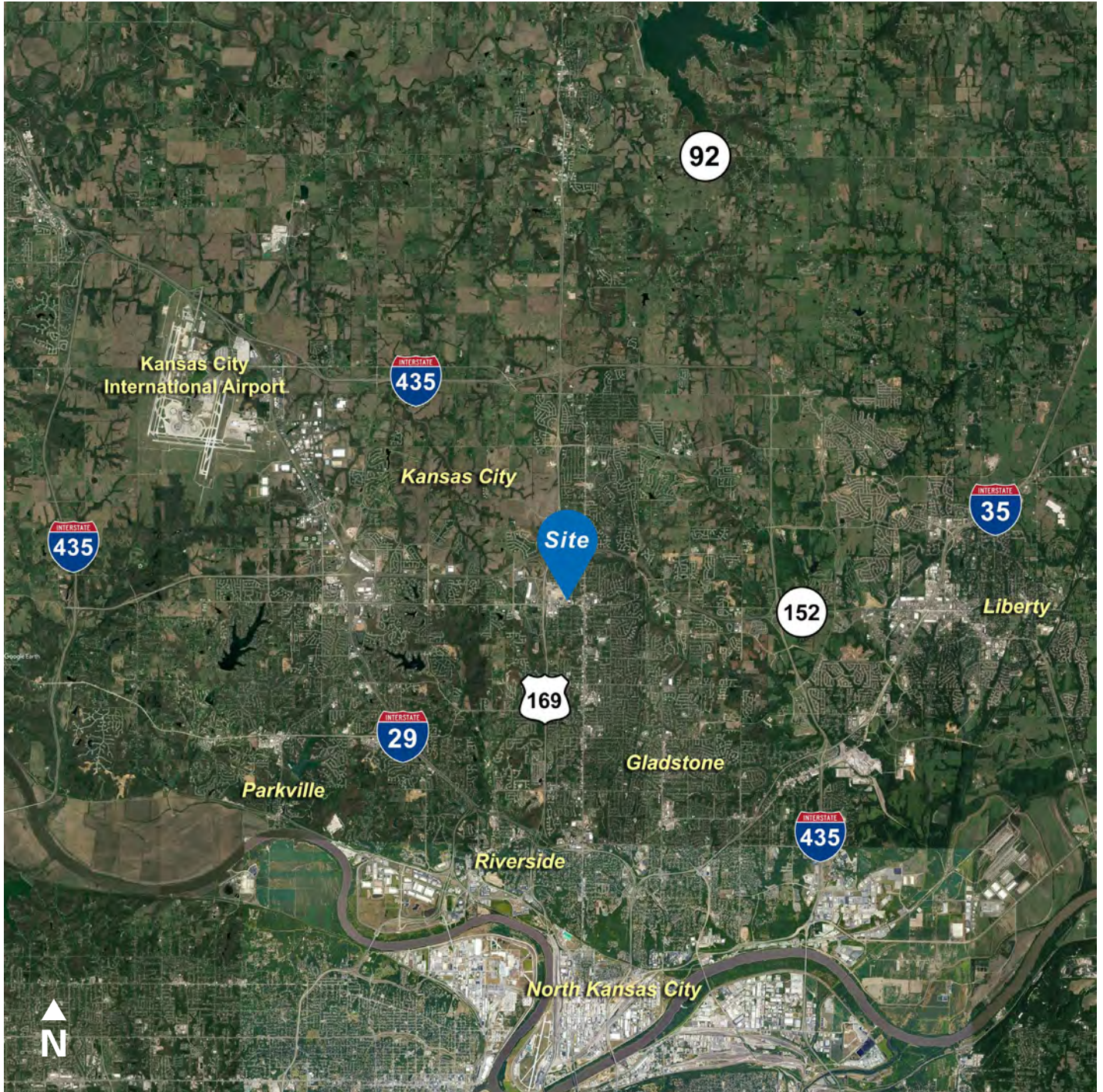


**NEWMARK  
ZIMMER**

The information contained herein has been obtained from sources deemed reliable but has not been verified and no guarantee, warranty or representation, either express or implied, is made with respect to such information. Terms of sale or lease and availability are subject to change or withdrawal without notice.



## 110 NW BARRY ROAD, KANSAS CITY, MISSOURI



### CONTACT

**Richard H. Chamberlain**

*Managing Director, Principal*

t 816-268-4222

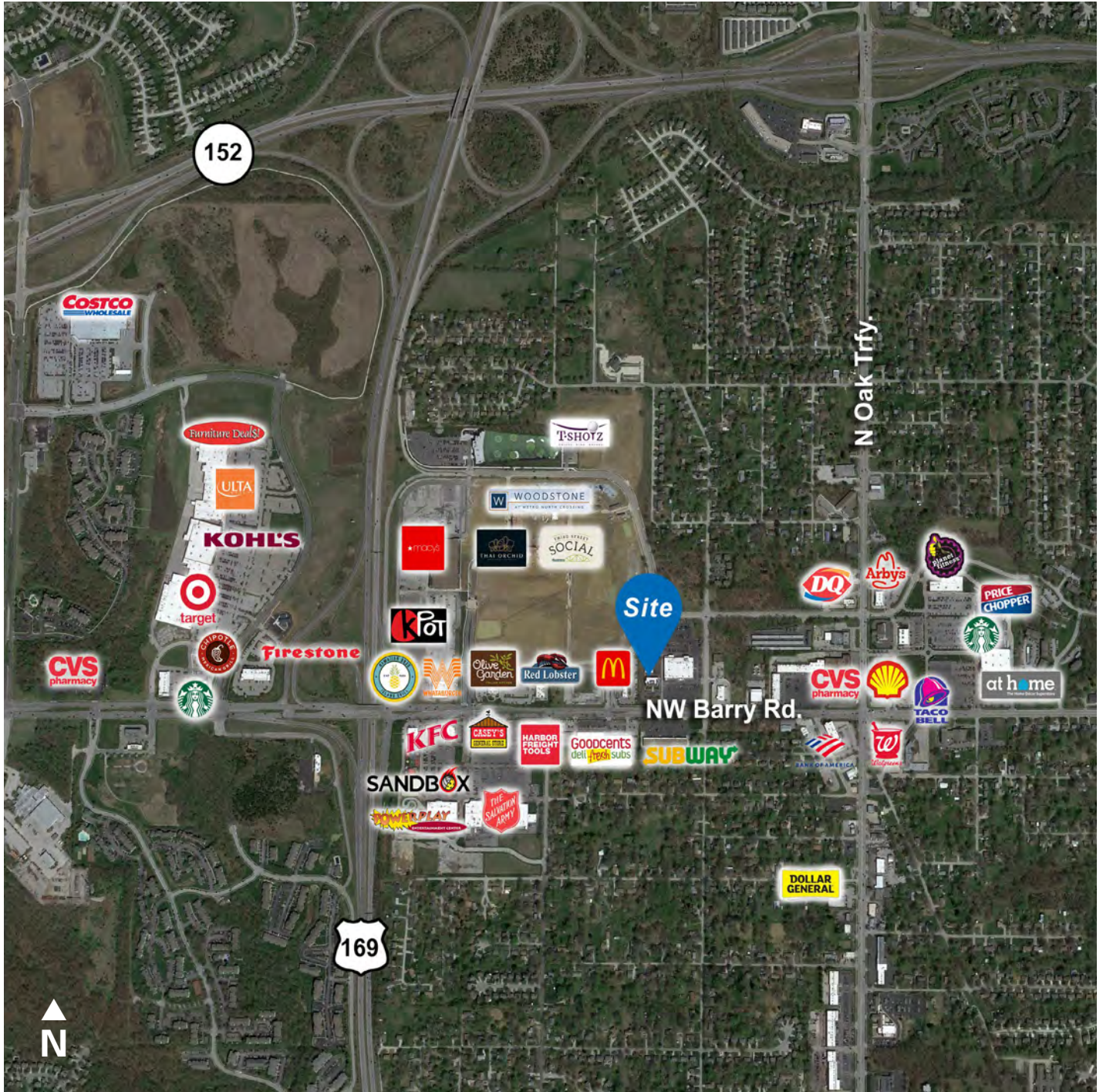
[rchamberlain@nzimmer.com](mailto:rchamberlain@nzimmer.com)

[nmrkzimmer.com](http://nmrkzimmer.com)

**NEWMARK**  
ZIMMER



## 110 NW BARRY ROAD, KANSAS CITY, MISSOURI



### CONTACT

**Richard H. Chamberlain**

*Managing Director, Principal*

t 816-268-4222

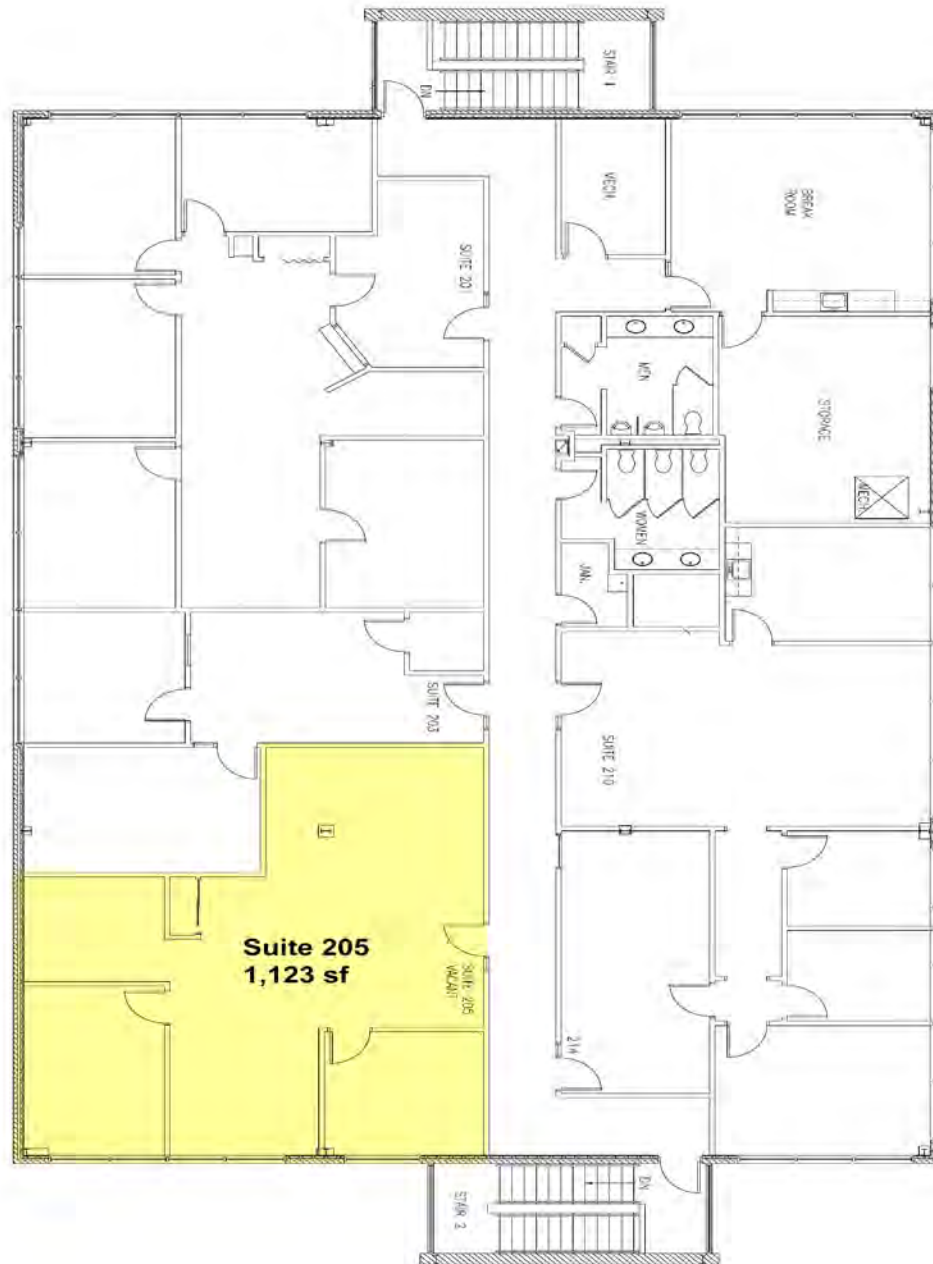
rchamberlain@nzimmer.com

[nmrkzimmer.com](http://nmrkzimmer.com)

**NEWMARK**  
ZIMMER

110 NW BARRY ROAD, KANSAS CITY, MISSOURI

## 2nd Floor Plan



### CONTACT

**Richard H. Chamberlain**

*Managing Director, Principal*

t 816-268-4222

rchamberlain@nzimmer.com

[nmrkzimmer.com](http://nmrkzimmer.com)

**NEWMARK**  
ZIMMER