



FOR LEASE – 13,390 SF with 4.5 Acres IOS

5504 15th St E, Bradenton, FL 34203

Flow Through Grade Level Warehouse With Frontage and Outdoor Storage

Devin Beeler
Senior Associate
+1 727 709 2179
Devin@Loberrealestate.com

Jason McCormick
Senior Associate
+1 561 613 5293
Jason@Loberrealestate.com

Robbie Lober
Managing Member
+1 727 999 1806
Robbie@Loberrealestate.com

Property Overview

Google Maps Link: [Click Link Here!](#)

Address: 5504 15th St E, Bradenton, FL 34203

Size Available: 8,390 SF Warehouse
5,000 SF Covered Awning
4.5 acres of fenced outdoor storage land

Zoning: "LM" – Light Manufacturing

Availability: NOW

Loading: 5 grade level doors

Clear Height: 12 ft – 20 ft

Power: 600 amps 480 volts 3 phase

County / Submarket: Manatee / Bradenton

Lot Size: 4.5 acres

Construction: Metal with steel frame

Ideal users: Trucking & transportation companies, truck repair facilities, outdoor machinery & equipment rental companies, fleet vehicle companies, heavy parking intensive users, landscape companies, vehicle repair users, roofing/fence companies, construction materials/barricades companies, utility contractors, and infrastructure-related companies, piping & tubing companies, steel fabrication companies, lumber yard companies, fuel distribution companies, container storage users, etc.



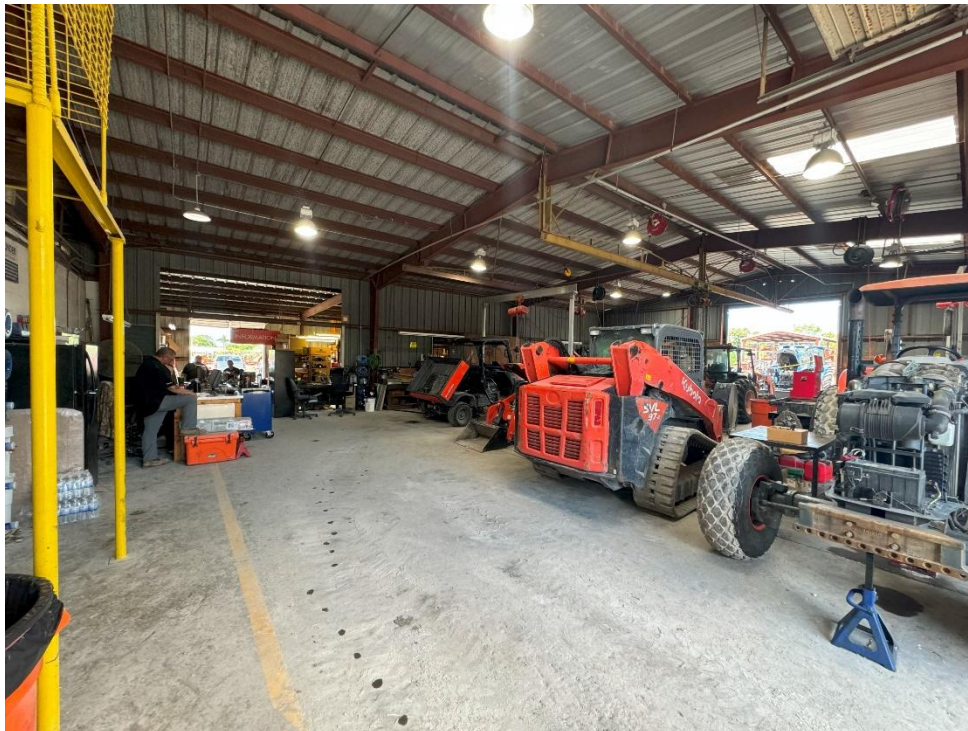
Property Photos



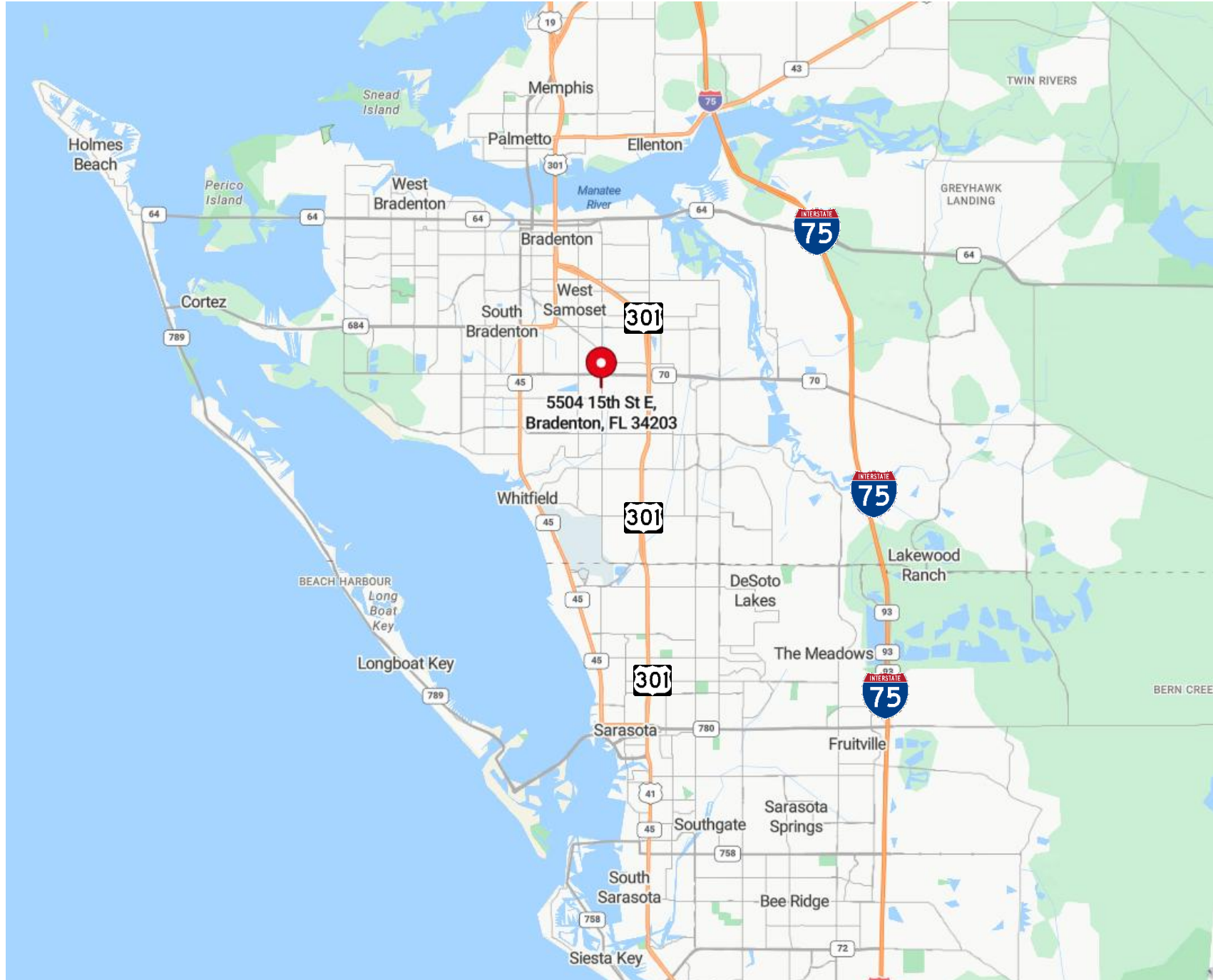
Property Photos



Property Photos



Heart of Manatee County | Quick Access to US HWY 301, US 41, and I-75





Contact for pricing and more info:

Devin Beeler
Senior Associate
+1 727 709 2179

Devin@Loberrealestate.com

Jason McCormick
Senior Associate
+1 561 613 5293

Jason@Loberrealestate.com

Robbie Lober
Managing Member
+1 727 999 1806

Robbie@Loberrealestate.com