

AVAILABLE

1114 East Main Street, Richmond, VA

RVA Downtown Retail/Office



Exclusive Agent:

Wilson M. Flohr

P.O. Box 6482

Richmond, VA 23230

(804) 521-1458 Direct

(804) 355-7950 Fax

wilson@porterinc.com

www.porterinc.com

PORTER
R E A L T Y

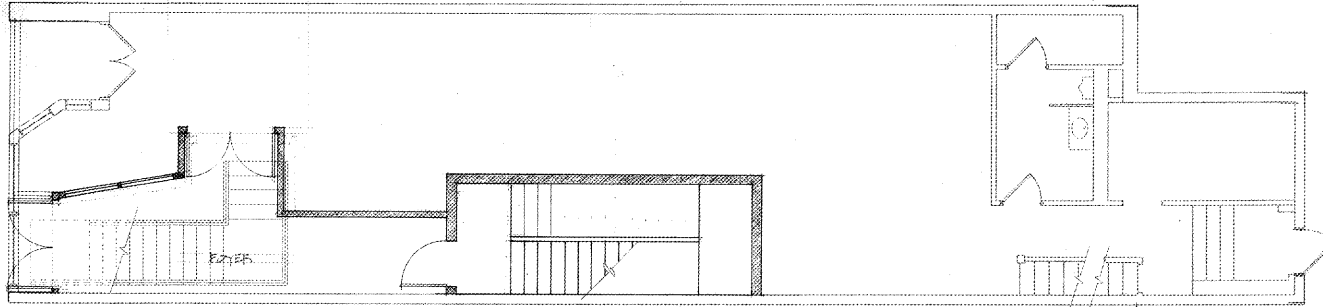
Working Hard, Working Smart...For Our Customers

CORFAC
International



- **5,625 SF +/- Office Building (3 Floors)**
- **1,875 SF +/- Basement Space**
- **.04 Acre +/-**
- **Zoned B-4**
- **Built 1870**
- ***For Sale/Lease: Call for Information***

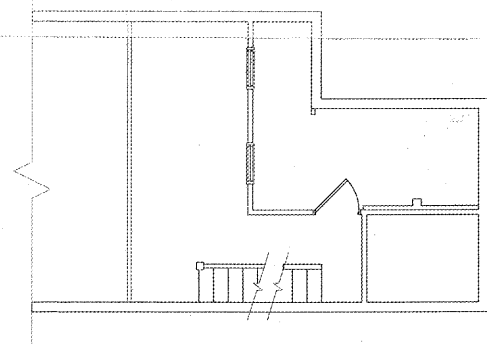
No warranty or representation is made as to the accuracy of the foregoing information.
Terms of sale or lease and availability are subject to change or withdrawal without notice.



FIRST FLOOR PLAN

SCALE: 1/4" = 1'-0"

77 x 20 = 1540	1683
11 x 13 = 143	1683
1683 1st & 2nd	3366
3RD DECK 45 x 19 = 855	4244 x 100 = 424,400
28 x 9 = 252	100 x 90 = 9,000
877.5	433,400
3RD DECK & 10 x 12 = 120	NOT INCLUDING BASEMENT



MEZZANINE FLOOR PLAN

SCALE: 1/4" = 1'-0"

Floor-to-Floor Heights: 1st - 2nd 15'-11 1/2"
2nd - 3rd 13'-1 1/4"

PROGRESS PRINT - NOT FOR CONSTRUCTION

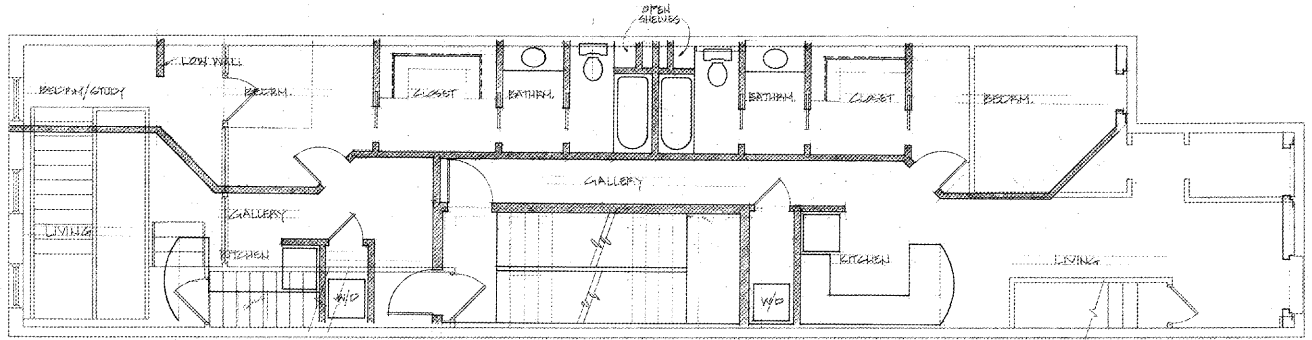
Joseph F. Yates
ARCHITECTS
 804.864.0180
Professional Seal: 2011000001, State of Virginia, Virginia 23220

Vogue Building Renovations
 1114 East Main Street
 Richmond, Virginia

Set Date:
 April 2, 2008
 Revisions:

Project No.:
 2008-05

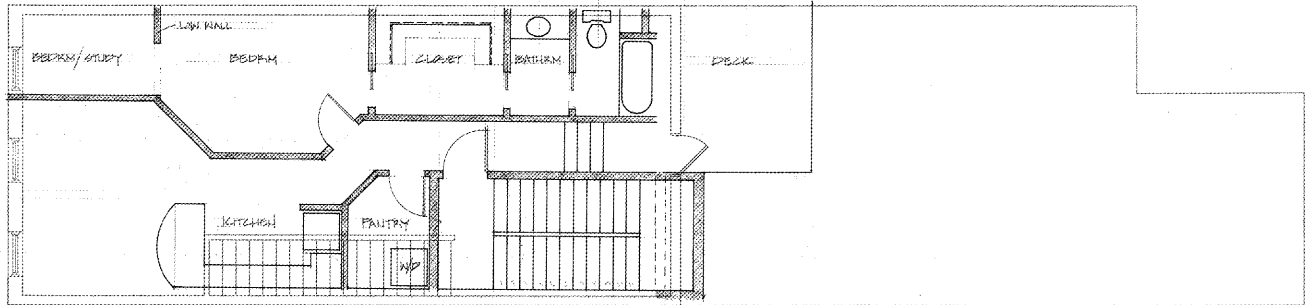
A1
 OF



121.5 sq. ft.

121.5 sq. ft.

SECOND FLOOR PLAN
SCALE: 1/4" = 1' - 0"



THIRD FLOOR PLAN 121.5 sq. ft.
SCALE: 1/4" = 1' - 0"

PROGRESS PRINT - NOT FOR CONSTRUCTION

Vogue Building Renovations
1114 East Main Street
Richmond, Virginia

Joseph F. Yates
ARCHITECTS
804.864.0180
201 East Street, Suite 8, Richmond, Virginia 23220

Set Date:
April 2, 2008
Revisions:

Project No.:
2008-05

A2

OF

1114 E. Main St., Richmond, VA 23219

Office Building For Sale/Lease



Wilson M. Flohr
804.521.1458
wilson@porterinc.com

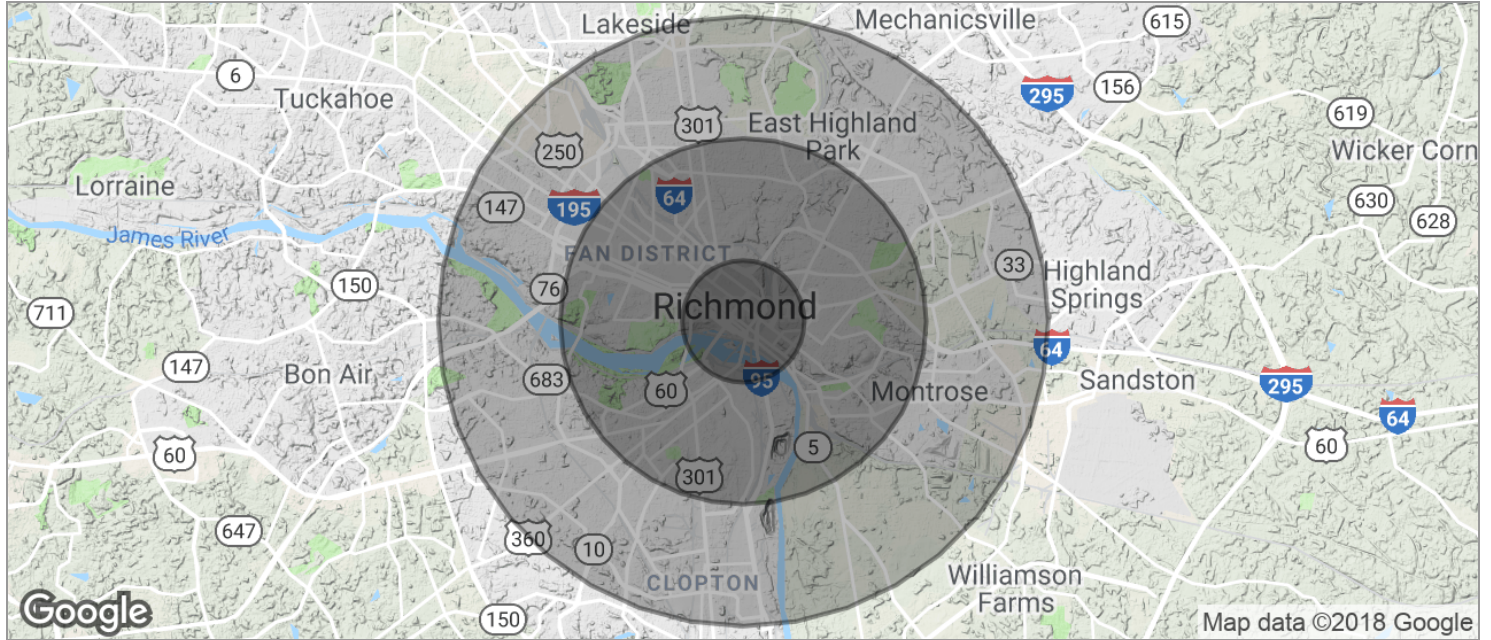


4801 Radford Avenue, P.O. Box 6482, Richmond, VA 23230 | www.porterinc.com

No warranty or representation is made as to the accuracy of the foregoing information. Terms of sale or lease and availability are subject to change or withdrawal without notice.

1114 E. Main St., Richmond, VA 23219

Office Building For Sale/Lease



POPULATION	1 MILE	3 MILES	5 MILES
TOTAL POPULATION	13,380	118,858	235,383
MEDIAN AGE	26.8	31.2	33.5
MEDIAN AGE (MALE)	27.1	29.9	31.6
MEDIAN AGE (FEMALE)	26.4	32.6	34.8
HOUSEHOLDS & INCOME	1 MILE	3 MILES	5 MILES
TOTAL HOUSEHOLDS	6,142	47,255	97,539
# OF PERSONS PER HH	2.2	2.5	2.4
AVERAGE HH INCOME	\$45,919	\$46,764	\$52,662
AVERAGE HOUSE VALUE	\$177,843	\$216,286	\$224,739

* Demographic data derived from 2010 US Census

Wilson M. Flohr
804.521.1458
wilson@porterinc.com



4801 Radford Avenue, P.O. Box 6482, Richmond, VA 23230 | www.porterinc.com

No warranty or representation is made as to the accuracy of the foregoing information. Terms of sale or lease and availability are subject to change or withdrawal without notice.