

NEW DEVELOPMENT FOR LEASE

📍 5269 Hinkleville Rd, Paducah, KY 42001

FOR LEASE DETAILS

- 1,500-9,000 SF available for lease
- 1500 SF minimum division
- Starting \$25 PSF - Triple Net
- Drive thru and/or patio seating available.

KEY HIGHLIGHTS

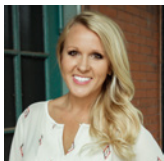
- Easy access to I-24
- Ingress/Egress off Hinkleville Rd and Olivet Church Rd
- Located on the main retail and restaurant corridor of Paducah
- Paducah has the #1 per capita en retail sales
- Centrally located in the Purchase Area Region of West KY
- Paducah's trade are includes:
 - Mayfield, KY - 10,024 (WKCTC)
 - Metropolis, IL - 6,465
 - Benton, KY - 4,349
 - Murray, KY - 17,741 (Murray State)
 - Union City, TN - 10,895
 - Martin, TN - 11,473 (UT Martin)
- Paducah comprises a 15-county region encompassing 4,396 square miles, home to more than 250,000 people
- Commercially Zoned in City of Paducah
- Reciprocal easements and restrict covenants as part of development

TRAFFIC COUNTS

- +/- 18,695 VPD on Hwy 60
- +/- 47,586 VPD on I - 24

DEMOGRAPHICS

	10-Mile	25-Mile	50-Mile
Population	72,781	150,662	431,083
Employees	32,749	65,493	185,186
Population Median Age	42.7	43.0	42.8
Average HH Income	\$87,507	\$85,128	\$79,258
Median HH Income	\$62,207	\$62,669	\$58,843



DAWN ARNOLD
BROKER

📞 C: 618.638.5682

✉️ dawn@thearnoldrealtygroup.com



ARNOLD REALTY GROUP
120 Cave Thomas | Suite A
O: 270.558.1338
www.thearnoldrealtygroup.com

NEW DEVELOPMENT FOR LEASE

📍 5269 Hinkleville Rd, Paducah, KY 42001

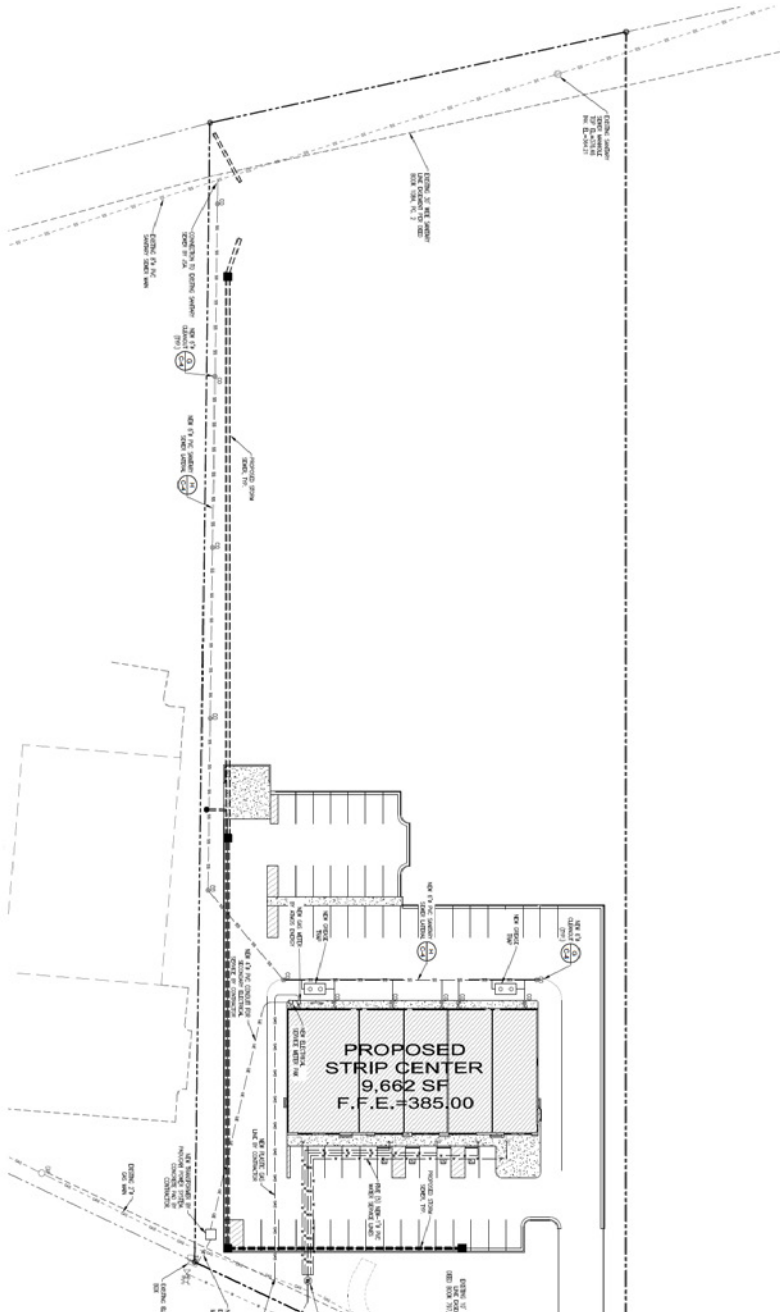
CONCEPTION BUILDING RENDERING NOW PRE-LEASING - UNDER CONSTRUCTION - SPRING 2026



NEW DEVELOPMENT FOR LEASE

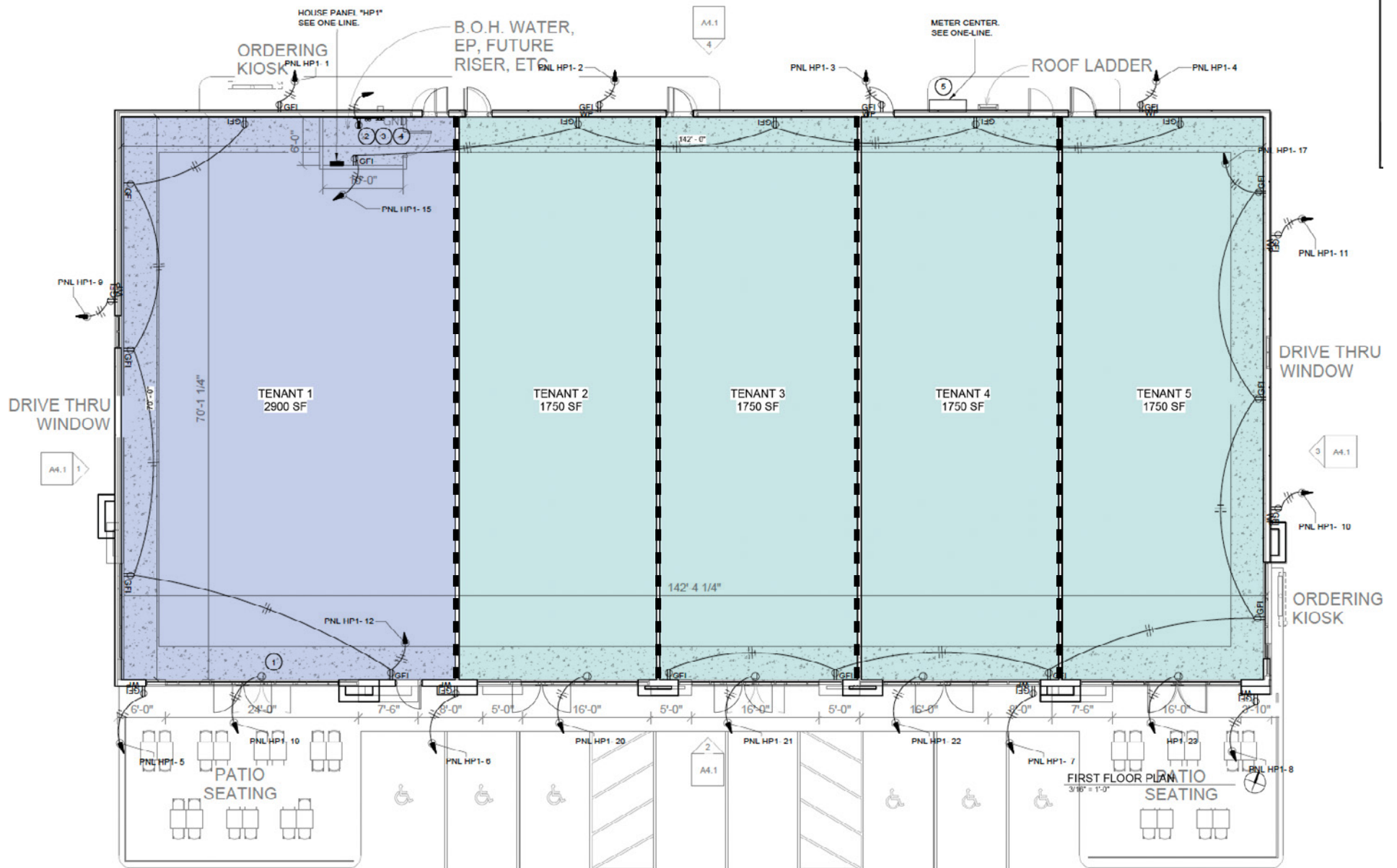
5269 Hinkleville Rd, Paducah, KY 42001

SITE PLAN AND FUTURE SITE PLAN



FLOOR PLANS

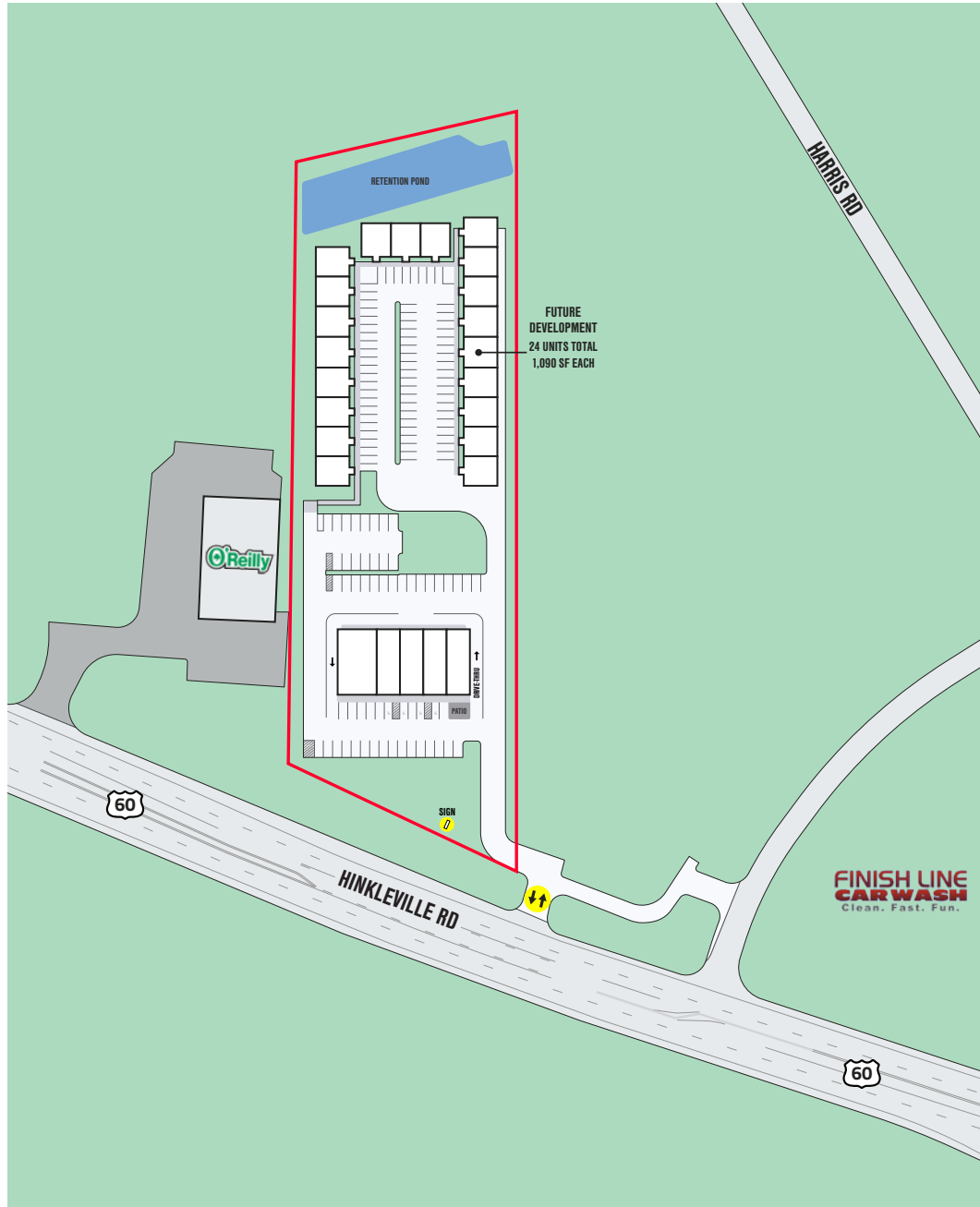
📍 5269 Hinkleville Rd, Paducah, KY 42001



NEW DEVELOPMENT FOR LEASE

📍 5269 Hinkleville Rd, Paducah, KY 42001

SITE PLAN



NEW DEVELOPMENT FOR LEASE

5269 Hinkleville Rd, Paducah, KY 42001

MIDRANGE AERIAL



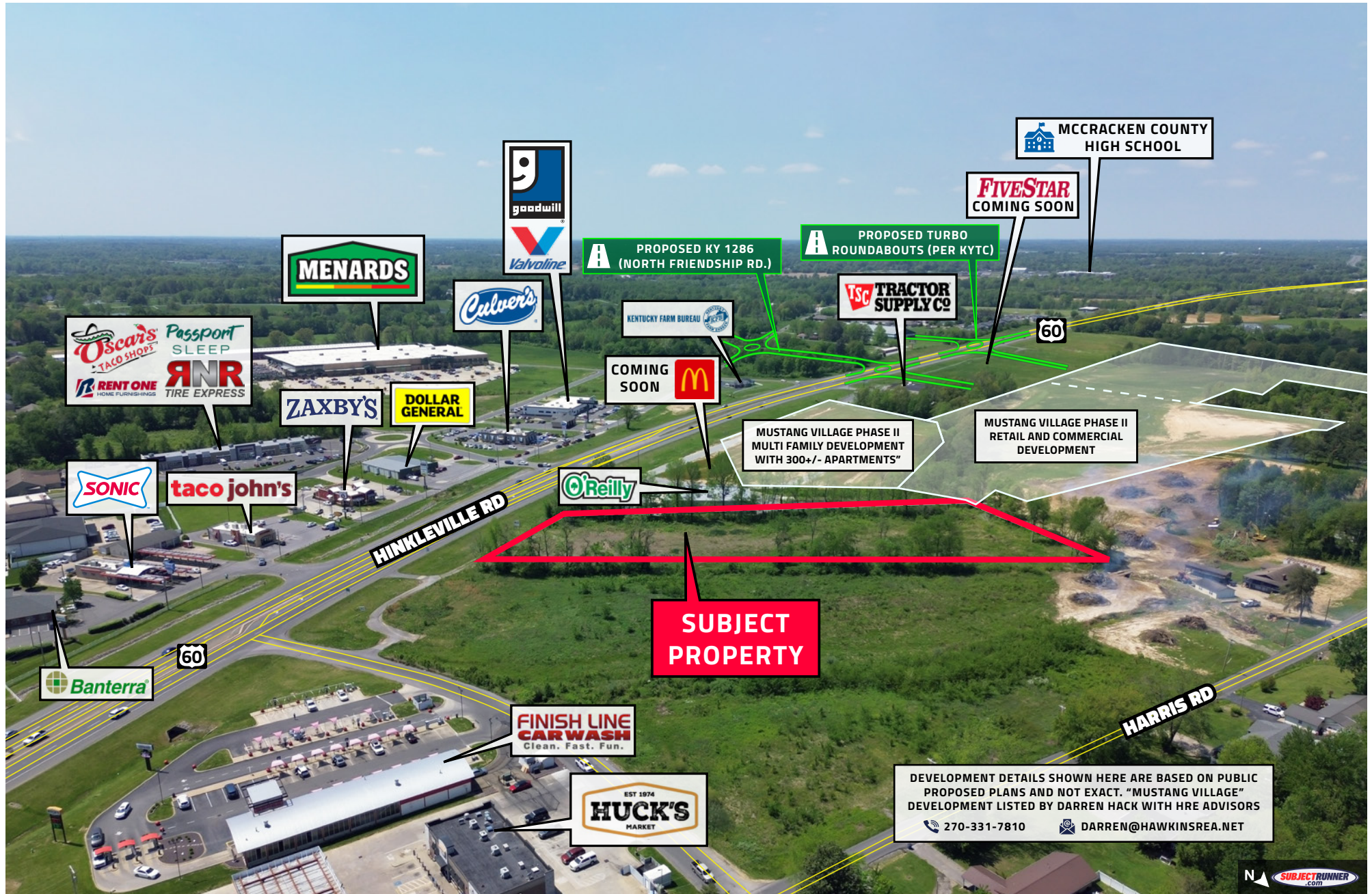
MARKET AERIAL

[illegible]

NEW DEVELOPMENT FOR LEASE

5269 Hinkleville Rd, Paducah, KY 42001

ADJACENT TO NEW MULTIFAMILY AND RETAIL/PROFESSIONAL DEVELOPMENT - MUSTANG VILLAGE



NEW DEVELOPMENT FOR LEASE

📍 5269 Hinkleville Rd, Paducah, KY 42001

MENARDS DEVELOPMENT



NEW DEVELOPMENT FOR LEASE

📍 5269 Hinkleville Rd, Paducah, KY 42001

PADUCAH OVERVIEW

AREA OVERVIEW

Plug into the power of Paducah to amp up financial advantages that support maximum growth and profitability. While Paducah's low-cost environment provides an ongoing boost to your bottom line, the state of Kentucky rewards your job creation at every turn, providing eligible projects with lucrative incentives ranging from no-cost workforce training and assistance to sales and use tax abatement to jobs tax credits and much more.

The Paducah labor pool offers superior size: Approximately 120,000 workers in a labor shed encompassing 11 counties in Western Kentucky and Southern Illinois.

Named one of the "Most Charming Small Towns in America" by the Travel Channel and Travel Pulse, and ranked as one of "America's Top 10 Small Towns for Shopping" by USA Today.

Geographically Centered

Located in the far western corner of Kentucky between the Ohio and Tennessee River. Travel easy with close proximity to Nashville and St Louis along I-24.

Healthcare

Residents regularly travel from four states to Paducah, drawn by two state-of-the-art hospitals, Baptist Health and Mercy Health plus a variety of specialized care, diagnostic and rehabilitation centers.

Diverse Economic Base

Thanks to Paducah's low cost, low traffic, low stress and abundance of nature trails and parks the feel good, live well mentality stays positive. McCracken County boasts a wide array of manufacturing enterprises. It's strategic location along the Ohio River supports a vital maritime industry, including three of Paducah's largest employers, Ingram Barge, Marquette Transportation and James Marine, Inc. The county's tourism industry generated more than \$273.54 Million in 2019 and supports more than 3,000 jobs.

Education

With multiple choices in both public and private schools, families enjoy one constant— quality in both instruction and performance. Dual enrollment and AP participation rates are strong and climbing in both public and private systems. A ready, skilled workforce and a knowledgeable populace are also supported by a portfolio of higher educational assets including Murray State University, Paducah Campus, West Kentucky Community and Technical College, University of Kentucky College of Engineering, Paducah Campus, and other area universities including MSU (45 miles), SEMO (73 miles), SIU (68 miles), and UT Martin (62 Miles).

Healthcare

Feel good, live well: It's easier in Paducah, thanks to low costs, low traffic, low stress, and an abundance of gorgeous parks and trails that invite four-seasons recreation. The power of Paducah to help residents live life to the fullest is also assured by award-winning healthcare facilities and service. Patients flock to Paducah from across a four-state region, drawn by the outstanding outcomes and preeminent reputations of providers including Baptist Health Paducah, Mercy Health-Lourdes Hospital, and Norton Children's Hospital Outpatient Clinic.



NEW DEVELOPMENT FOR LEASE

📍 5269 Hinkleville Rd, Paducah, KY 42001

