

Mid Pinellas  
Industrial/Flex Space  
100% climate controlled

**FOR LEASE**



**8575 SOMERSET DRIVE  
LARGO, FL 33773**

*8,700-SF total with 500-SF office*

• **\$12.50 PSF NNN**



**VECTOR**  
COMMERCIAL REAL ESTATE

[www.VectorRealty.com](http://www.VectorRealty.com)  
125 5<sup>th</sup> Street South Suite 201  
Staint Petersburg, Florida 33704  
727-823-1230



Ned Willis  
NWillis@VectorRealty.com  
(727) 481-3356



Ashley Willis  
AWillis@VectorRealty.com  
(727) 776-0290

# EXECUTIVE SUMMARY

**Mid Pinellas 100%  
climate-controlled space  
conveniently located between  
Bryan Dairy Rd. and Ulmerton  
Rd. just East of Starkey Rd.  
Ideally suited for warehousing  
and distribution.**

**The space is in excellent  
condition and features a small  
500-SF office area, and 8,200  
SF of open warehouse space.**

**The warehouse clear height is  
26' at the peak and 17' at the  
eaves with 1 truck well, 1  
grade-level door, and LED  
lighting.**



**LEASE RATE**  
\$12.50 PSF NNN



**LOCATION**  
8575 Somerset Drive  
Largo, FL 33773



**SIZE**  
8,700-SF TOTAL  
• 500-SF OFFICE



**FFEATURES**  
1 Truck Well  
1 Grade Level Door  
LED Lighting  
100% Climate Controlled



**BUILDING**  
26' Clear Height  
at Peak



**PARKING**  
20 Parking Spaces



**USE**  
Industrial/  
Warehouse  
Flex



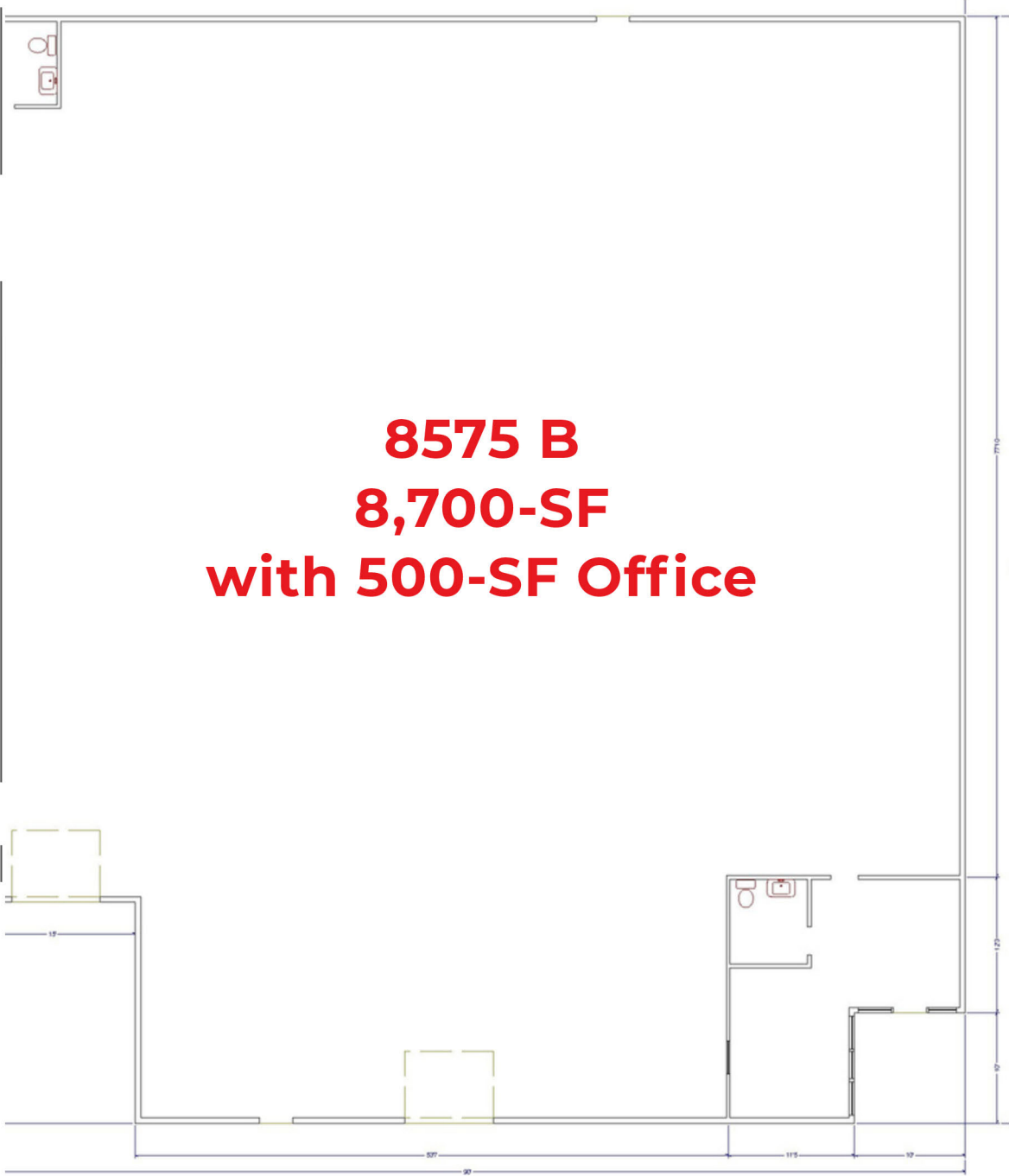
8575 Somerset Drive  
Largo, FL 33773



8575 Somerset Drive  
Largo, FL 33773

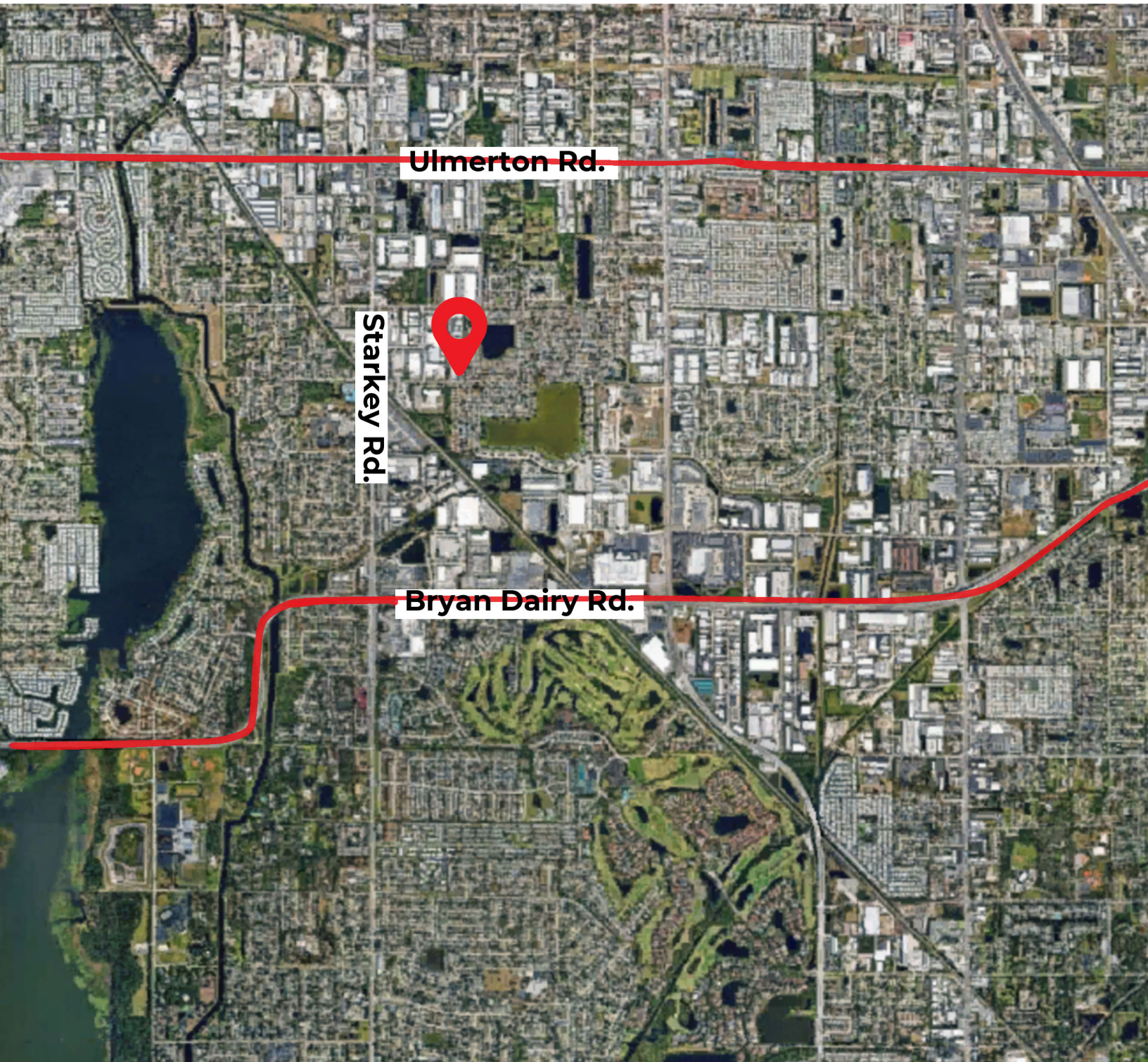
# Floor Plan

**8575 B**  
**8,700-SF**  
**with 500-SF Office**



8575 Somerset Drive  
Largo, FL 33773

## Market Map



Vector Commercial Real Estate Services, LLC is a licensed Real Estate Brokerage. No warranties or representations, express or implied, are made as to the accuracy of the information contained herein, and same is submitted subject to omissions, changes of price, rental or other conditions, withdrawal without notice, and to any other limitations imposed by our principals.