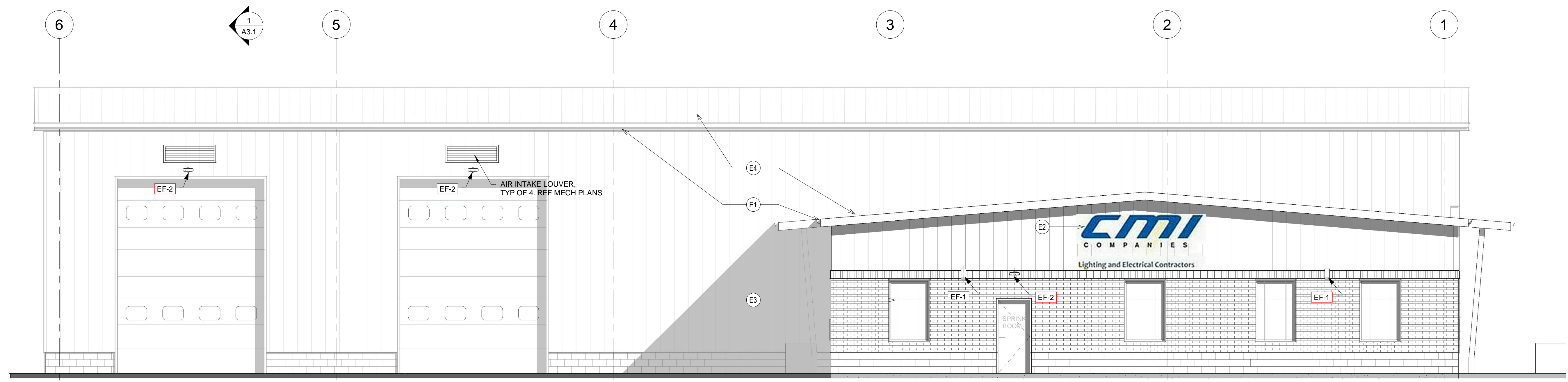
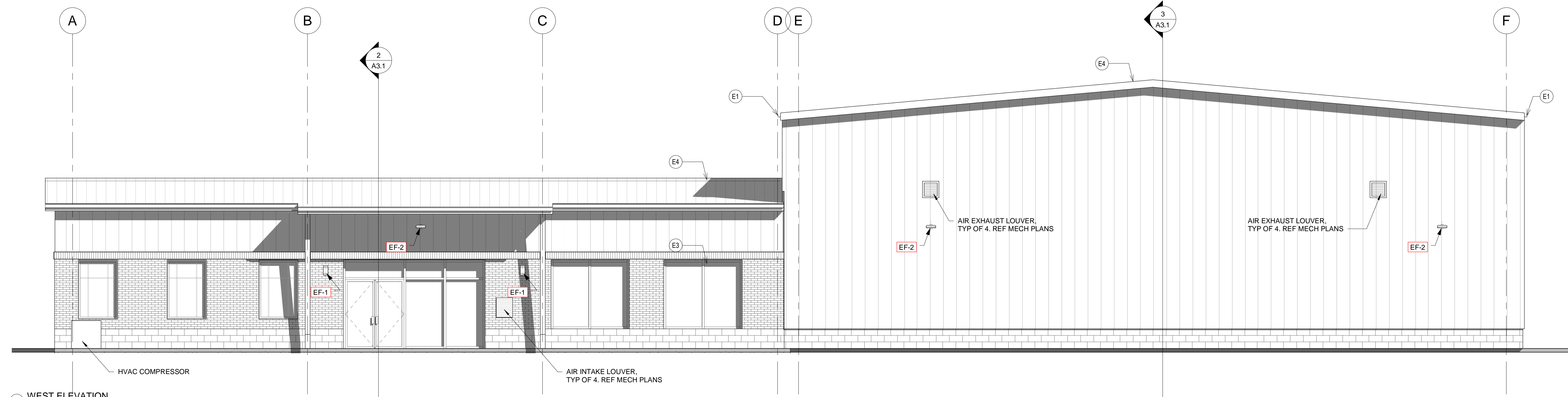


COPYRIGHT JOHN F. HELTZEL AIA, PC 2019

CMI OFFICE AND SHOP
CMI LIGHTING
VINT HILL LOTS 8A & 9A
FAUQUIER COUNTY, VA

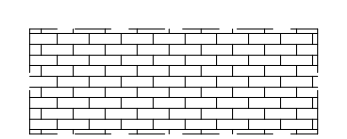


2 NORTH ELEVATION - A
3/16" = 1'-0"

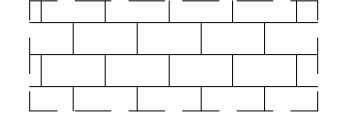


1 WEST ELEVATION
3/16" = 1'-0"

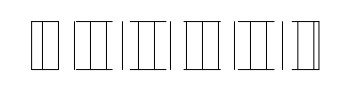
MATERIALS LEGEND:



BR-1 - MODULAR BRICK.
BASE COLOR/FINISH TBD.

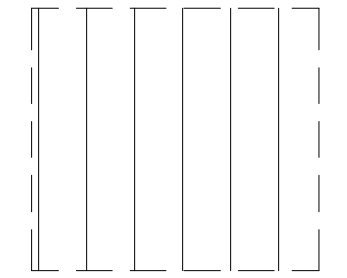


CMU BLOCK W/
ARCHITECTURAL FINISH



SOLDIER / ROWLOCK
COURSING - EITHER BR-1
OR BR-2. CONTRASTING
BRICK HUE.

CJ = MASONRY CONTROL JOINT



VARCO PRUDEN (VP)
IMPRESSACLAD WALL PANEL, 16"
WIDE COVERAGE, 20 GAUGE
EMBOSSED STEEL PANELS.
INSTALL OVER HAT CHANNEL
WHERE APPLICABLE FOR CONT.
THERMAL INSULATION BEHIND.
COLOR TBD (ONE OF 4 STANDARD
KYNAR FINISHES - LINEN, GRAY,
SANDSTONE, OR ASH)

EXTERIOR LIGHT FIXTURE LEGEND

- EF-1 LITHONIA OLLWU LED UP/DN WALL SCENCE - DARK BRONZE. 4000K. REFERENCE ELECTRICAL DRAWINGS
- EF-2 LITHONIA OLW14 LED Outdoor LED Wall Pack Light with Dusk-to-Dawn Sensor - DARK BRONZE.
-SINGLE ENGINE (10 LEDES)
-DIST TYPE SR4
-DMG DIMMING DRIVER (REF ELEC DWGS)
-ELCW EMERG BATT BACKUP AT EXTERIOR DOORS (REF ELEC DWGS)
- EF-3 LITHONIA 6" RECESSED DOWNLIGHT AT CANOPY - LED, OUTDOOR RATED.
-ELCW EMERG BATT BACKUP AT EXTERIOR DOORS (REF ELEC DWGS)

EXTERIOR KEYED NOTES

- E1 PRE-MANF ALUM GUTTER, DOWNSPOUT, AND PVC BOOT. TIE IN TO SITE DRAINAGE AT GRADE - COLOR TO MATCH ROOF. REF CIVIL FOR TIE-INS
- E2 NEW SIGNAGE (NIC), APPROVAL, AND INSTALL BY OWNER'S SIGN COMPANY. GC TO COORDINATE BLOCKING AND POWER REQUIREMENTS WITH SIGN COMPANY.
- E3 REF: FLOOR PLANS FOR WINDOW AND DOOR CALLOUTS.
- E4 PRE-MANF STANDING SEAM METAL ROOF - BERRIDGE OR EQUAL CONTRASTING COLOR TO METAL WALL PANELS. REF SECTIONS AND ROOF PLAN

Project: CMI_Office&Shop-19

PRELIM DESIGN
DATE: 01.08.2020

REVISIONS

SHEET
EXTERIOR ELEVATIONS

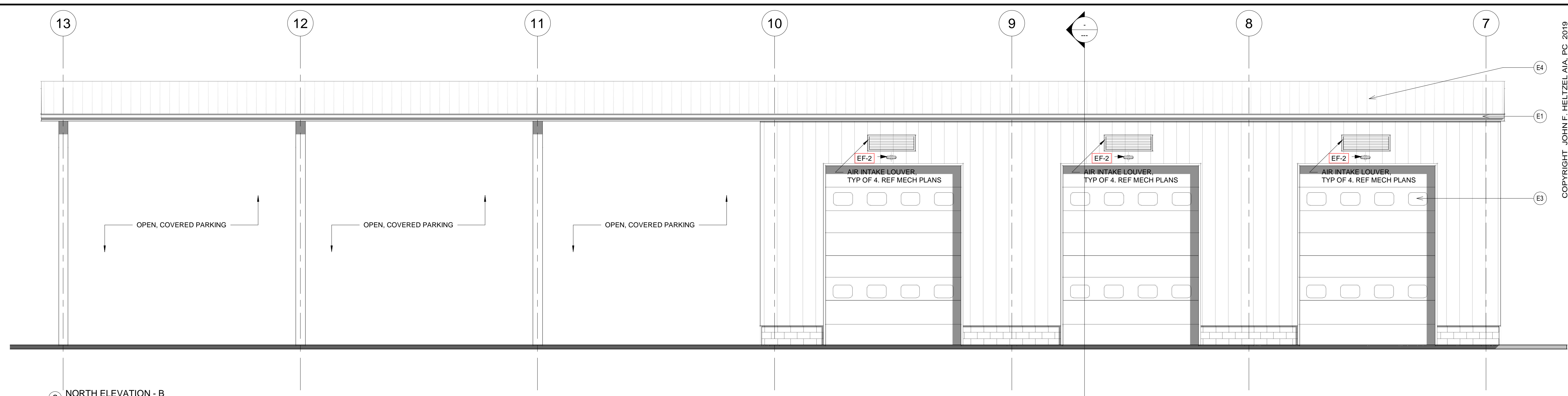
A2.1

PRELIM DESIGN

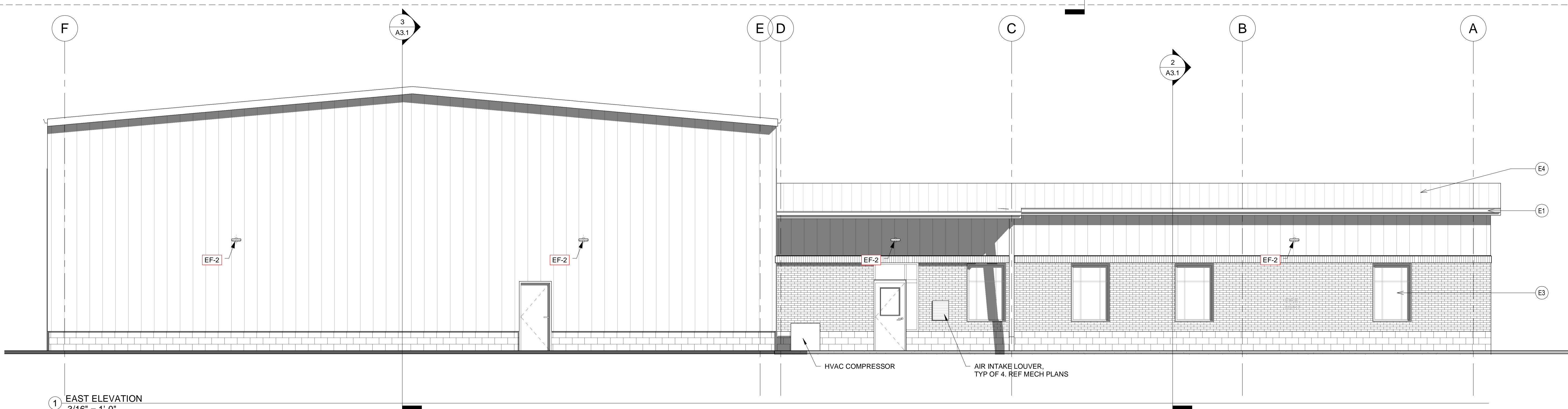
1/8/2020 4:13:23 PM \\Heltzel\AIA Cloud\AIA Projects - Current\CMI_Office&Shop-19\Revit\CMI_Mainfile.rvt

COPYRIGHT JOHN F. HELTZEL AIA, PC 2019

CMI OFFICE AND SHOP
CMI LIGHTING
 VINT HILL LOTS 8A & 9A
 FAUQUIER COUNTY, VA

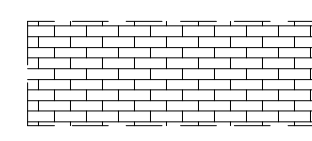
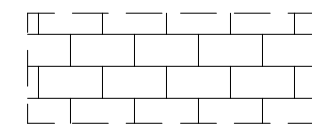
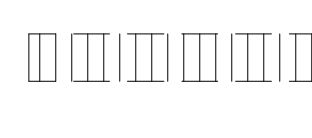

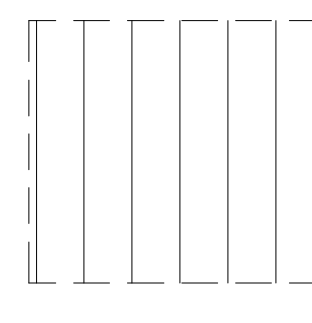


2 NORTH ELEVATION - B
 3/16" = 1'-0"



1 EAST ELEVATION
 3/16" = 1'-0"

MATERIALS LEGEND:

-  BR-1 - MODULAR BRICK. BASE COLOR/FINISH TBD.
-  CMU BLOCK W/ ARCHITECTURAL FINISH
-  SOLDIER / ROWLOCK COURSING - EITHER BR-1 OR BR-2. CONTRASTING BRICK HUE.
-  *CJ* = MASONRY CONTROL JOINT
-  VARCO PRUDEN (VP) IMPRESSACLAD WALL PANEL, 16" WIDE COVERAGE, 20 GAUGE EMBOSSED STEEL PANELS. INSTALL OVER HAT CHANNEL WHERE APPLICABLE FOR CONT. THERMAL INSULATION BEHIND COLOR TBD (ONE OF 4 STANDARD KYNAR FINISHES - LINEN, GRAY, SANDSTONE, OR ASH)

EXTERIOR LIGHT FIXTURE LEGEND

- EF-1** LITHONIA OLLWU LED UP/DN WALL SCONCE - DARK BRONZE. 4000K. REFERENCE ELECTRICAL DRAWINGS
- EF-2** LITHONIA OLW14 LED Outdoor LED Wall Pack Light with Dusk-to-Dawn Sensor - DARK BRONZE. -SINGLE ENGINE (10 LEDs) -DIST TYPE SR4 -DMG DIMMING DRIVER (REF ELEC DWGS) -ELCW EMERG BATT BACKUP AT EXTERIOR DOORS (REF ELEC DWGS)
- EF-3** LITHONIA 6" RECESSED DOWNLIGHT AT CANOPY - LED, OUTDOOR RATED. -ELCW EMERG BATT BACKUP AT EXTERIOR DOORS (REF ELEC DWGS)

EXTERIOR KEYED NOTES

- E1** PRE-MANF ALUM GUTTER, DOWNSPOUT, AND PVC BOOT. TIE IN TO SITE DRAINAGE AT GRADE - COLOR TO MATCH ROOF. REF CIVIL FOR TIE-INS
- E2** NEW SIGNAGE (NIC), APPROVAL, AND INSTALL BY OWNER'S SIGN COMPANY. GC TO COORDINATE BLOCKING AND POWER REQUIREMENTS WITH SIGN COMPANY.
- E3** REF: FLOOR PLANS FOR WINDOW AND DOOR CALLOUTS.
- E4** PRE-MANF STANDING SEAM METAL ROOF - BERRIDGE OR EQUAL CONTRASTING COLOR TO METAL WALL PANELS. REF SECTIONS AND ROOF PLAN

Project: CMI_Office&Shop-19

PRELIM DESIGN
 DATE: 01.08.2020

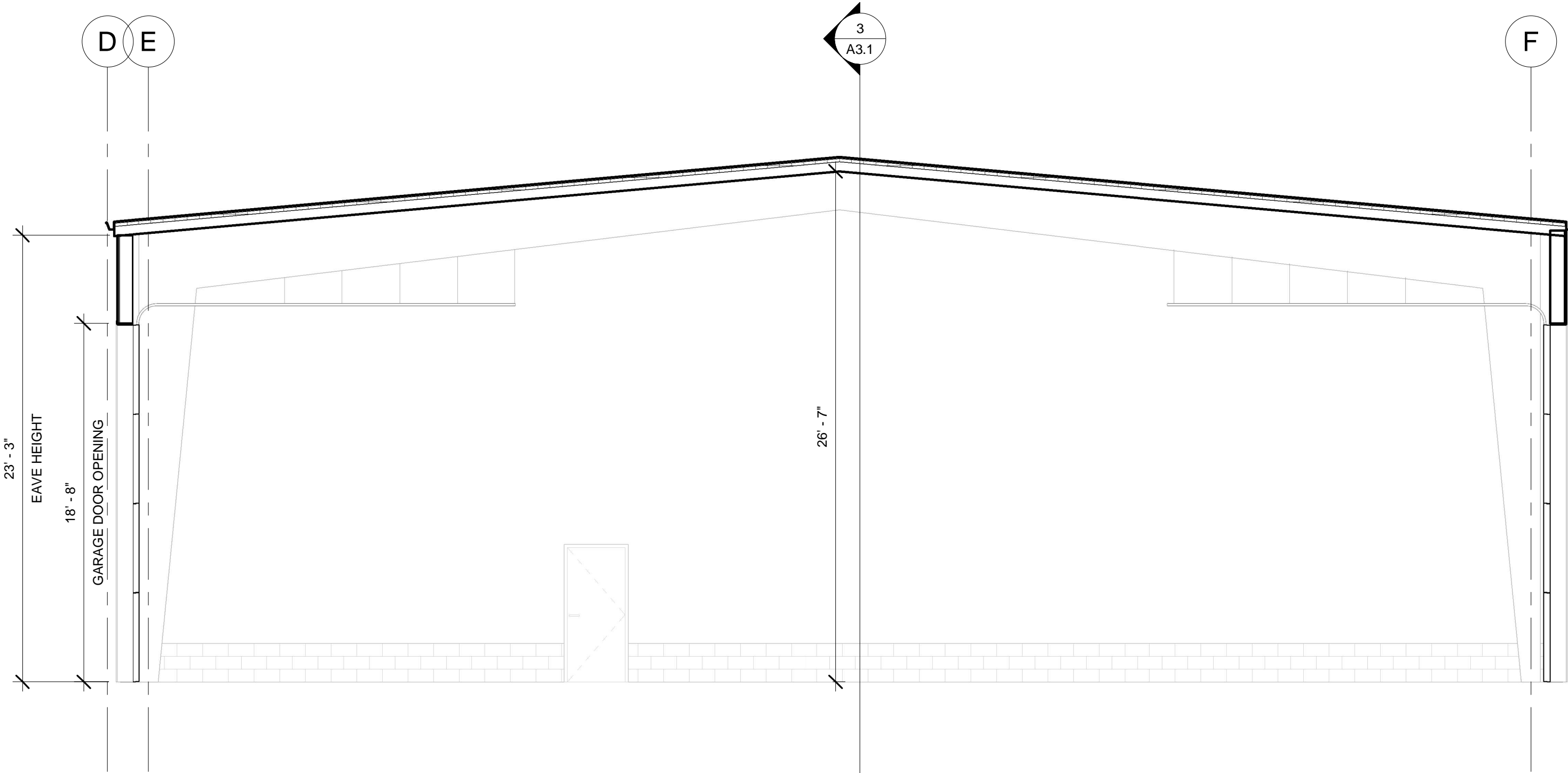
REVISIONS

SHEET
 EXTERIOR ELEVATIONS

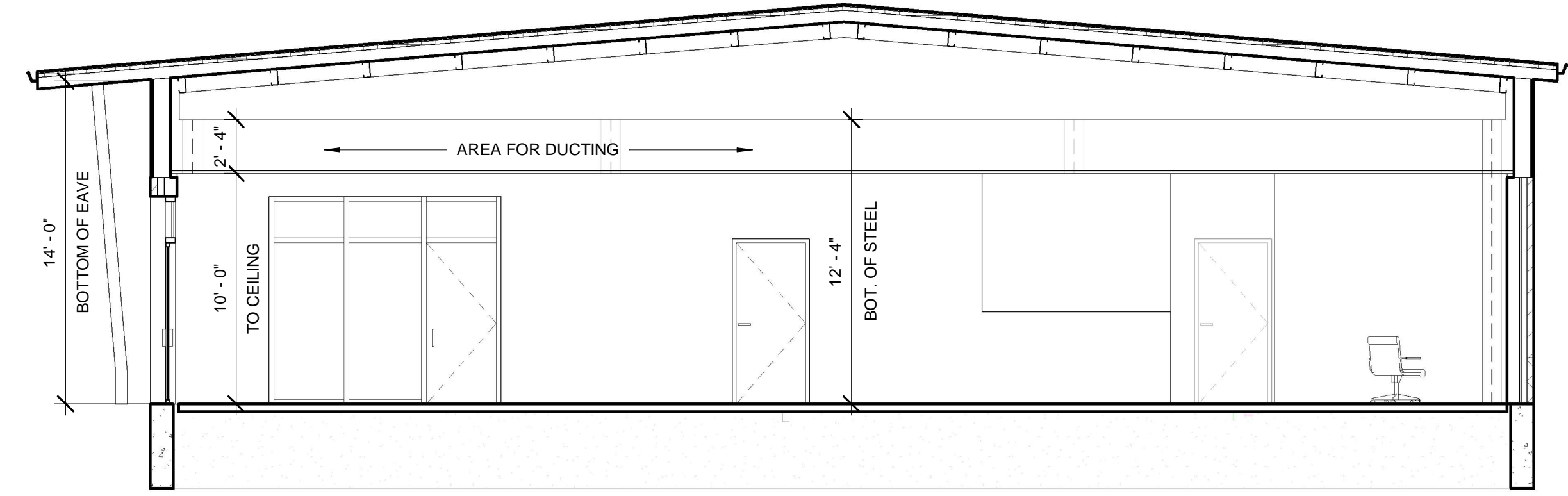
A2.2

PRELIM DESIGN

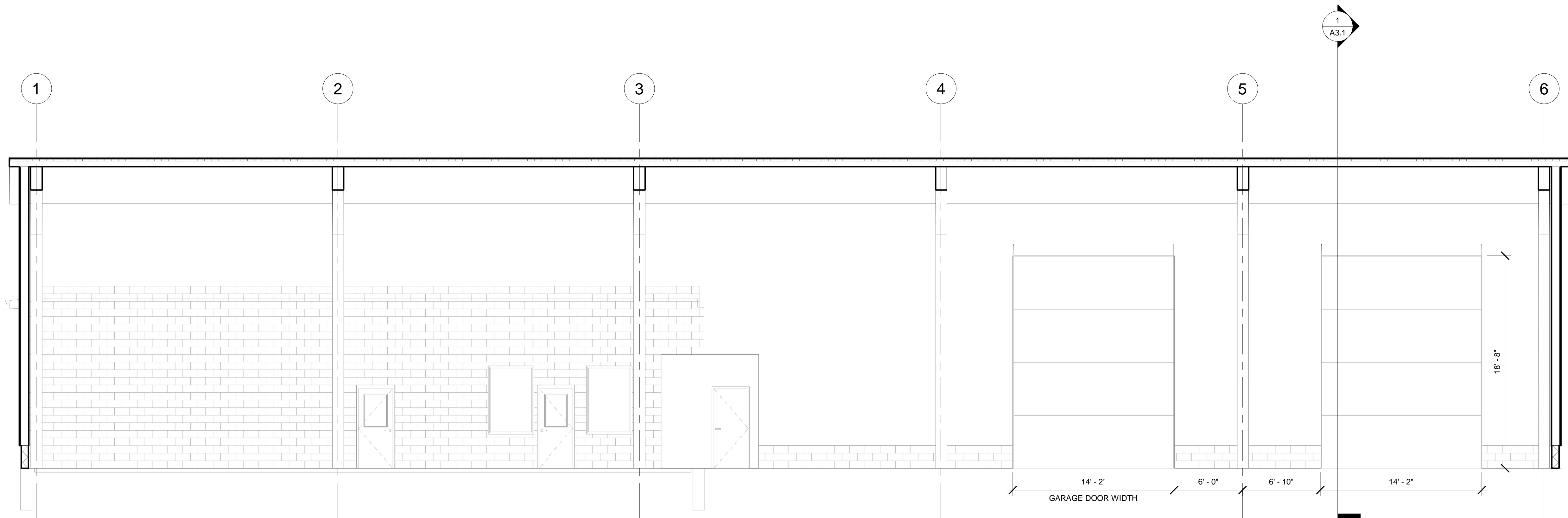
1/8/2020 4:13:27 PM \\Heltzel\AIA_Cloud\AIA_Projects - Current\CMI_Offices&Shop-19\Revit\CMI_Mainfile.rvt



1 BLDG SECTION @ WAREHOUSE
3/16" = 1'-0"



2 BLDG SECTION @ OFFICES
3/16" = 1'-0"



3 BLDG SECTION @ WAREHOUSE -
TRANSVERSE
3/16" = 1'-0"

CMI OFFICE AND SHOP
CMI LIGHTING
VINT HILL LOTS 8A & 9A
FAUQUIER COUNTY, VA

Project: CMI_Office&Shop-19

PRELIM DESIGN
DATE: 01.08.2020

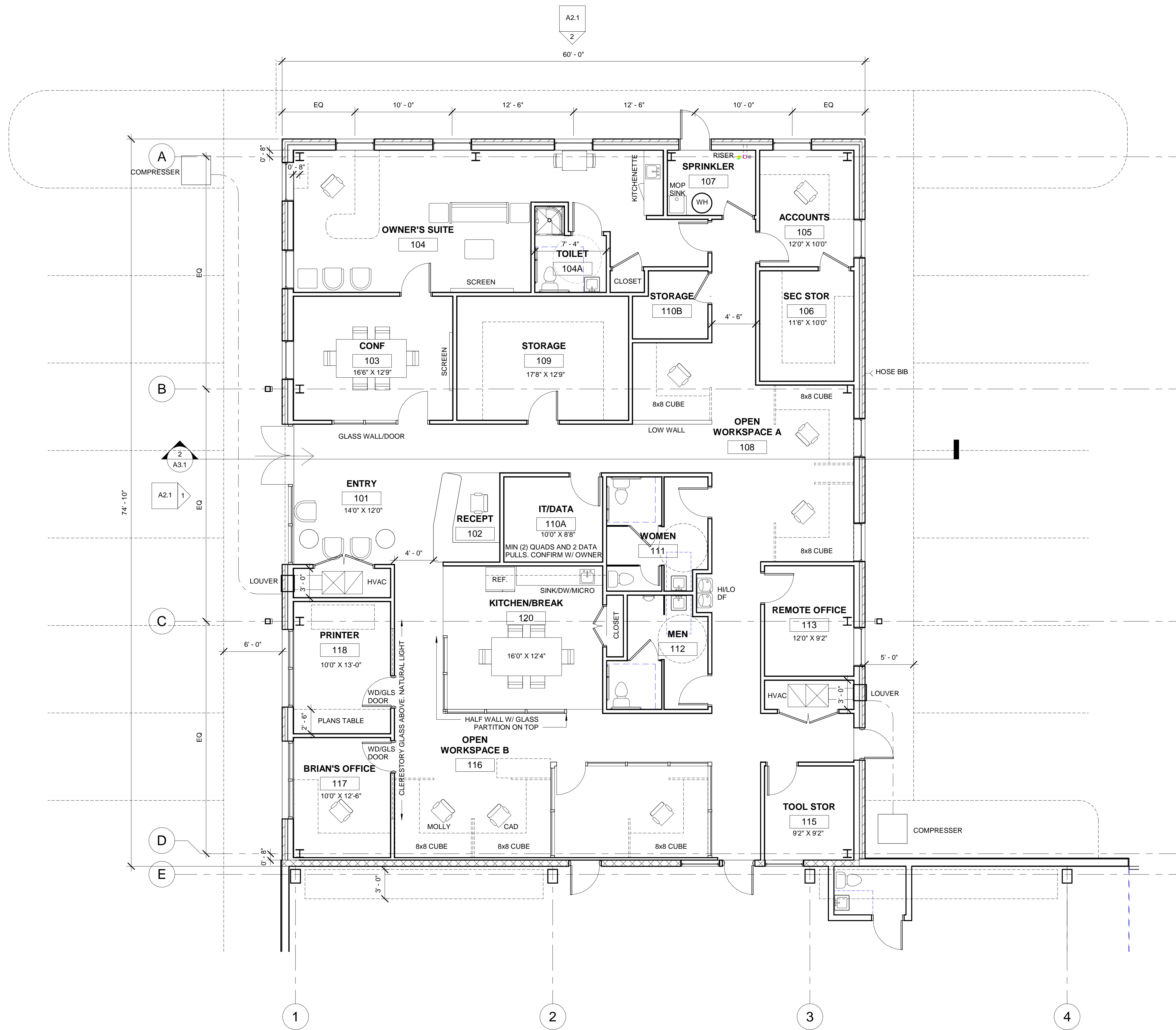
REVISIONS

SHEET
BLDG SECTIONS

A3.1

PRELIM DESIGN

1/8/2020 4:13:34 PM
 \\Heltzel\as\AIA Cloud\AIA Projects - Current\CMI - Office&Shop-19\Revit\CMI_Mainfile.rvt



1 PD1.1 FLOOR PLAN
 3/16" = 1'-0"

COPYRIGHT JOHN F. HELTZEL AIA, PC 2019



John F. Heltzel
 AIA

A PROFESSIONAL CORPORATION
 9389 FORESTWOOD LANE
 MANASSAS, VIRGINIA 20110
 PHONE 703-330-6170
 FAX 703-361-8671
 WWW.HELZELAIA.COM

CMI OFFICE AND SHOP
CMI LIGHTING
 VINT HILL LOTS 8A & 9A
 FAUQUIER COUNTY, VA

Project: CMI_Office&Shop-19

PRELIM DESIGN
 DATE: 01.08.2020

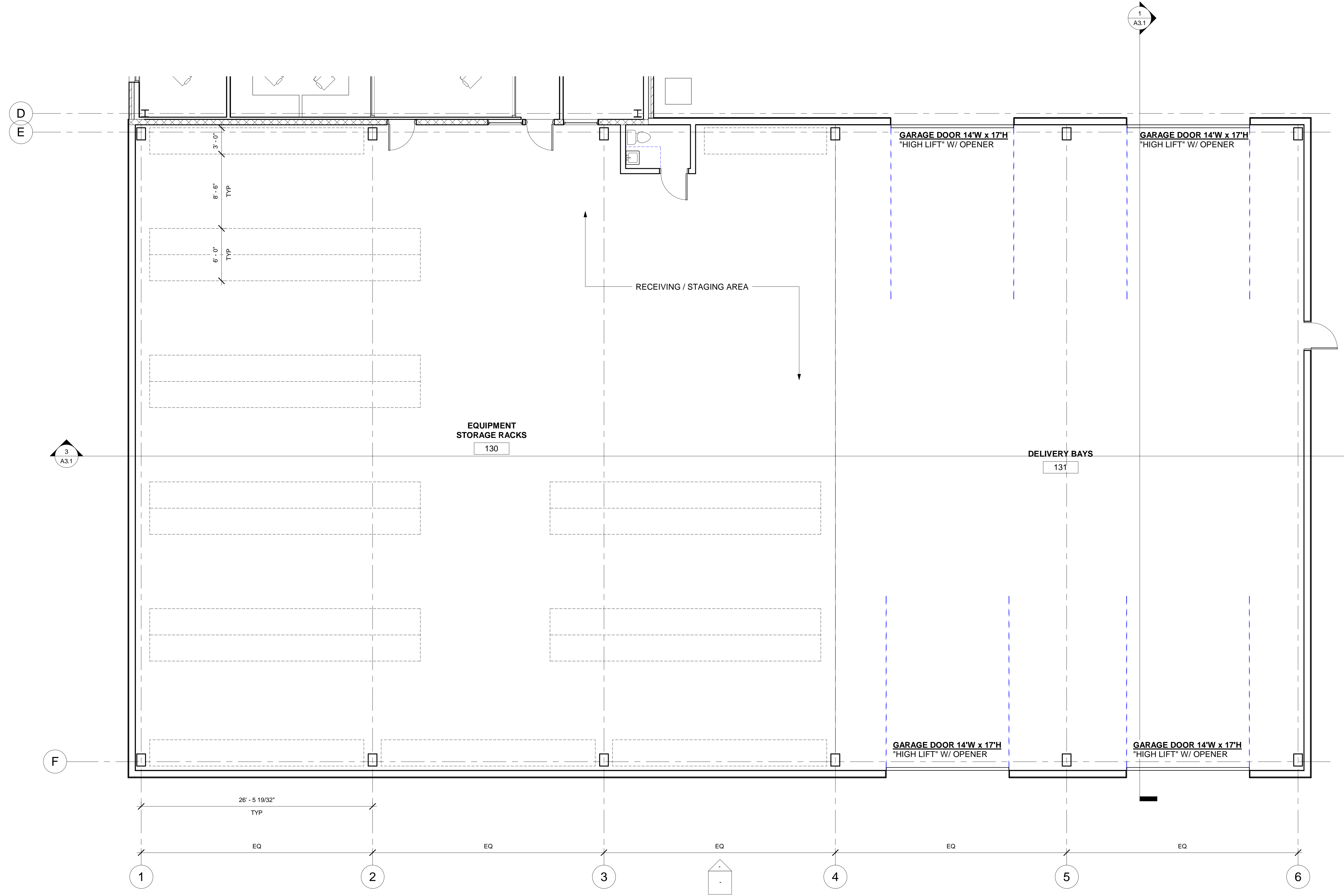
REVISIONS

SHEET
 OFFICES AREA

PD1.1

PRELIM DESIGN

1/8/2020 4:13:35 PM
\\Heltzel\AIA Cloud\AIA Projects - Current\CMI_Office&Shop-19\Revit\CMI_Mainfile.rvt



② PD1.2 FLOOR PLAN
3/16" = 1'-0"

COPYRIGHT JOHN F. HELTZEL AIA, PC 2019

25
years of design

John F. Heltzel
AIA
A PROFESSIONAL CORPORATION

9389 FORESTWOOD LANE
MANASSAS, VIRGINIA 20110

PHONE 703-330-6170
FAX 703-361-8671
WWW.HELZELAIA.COM

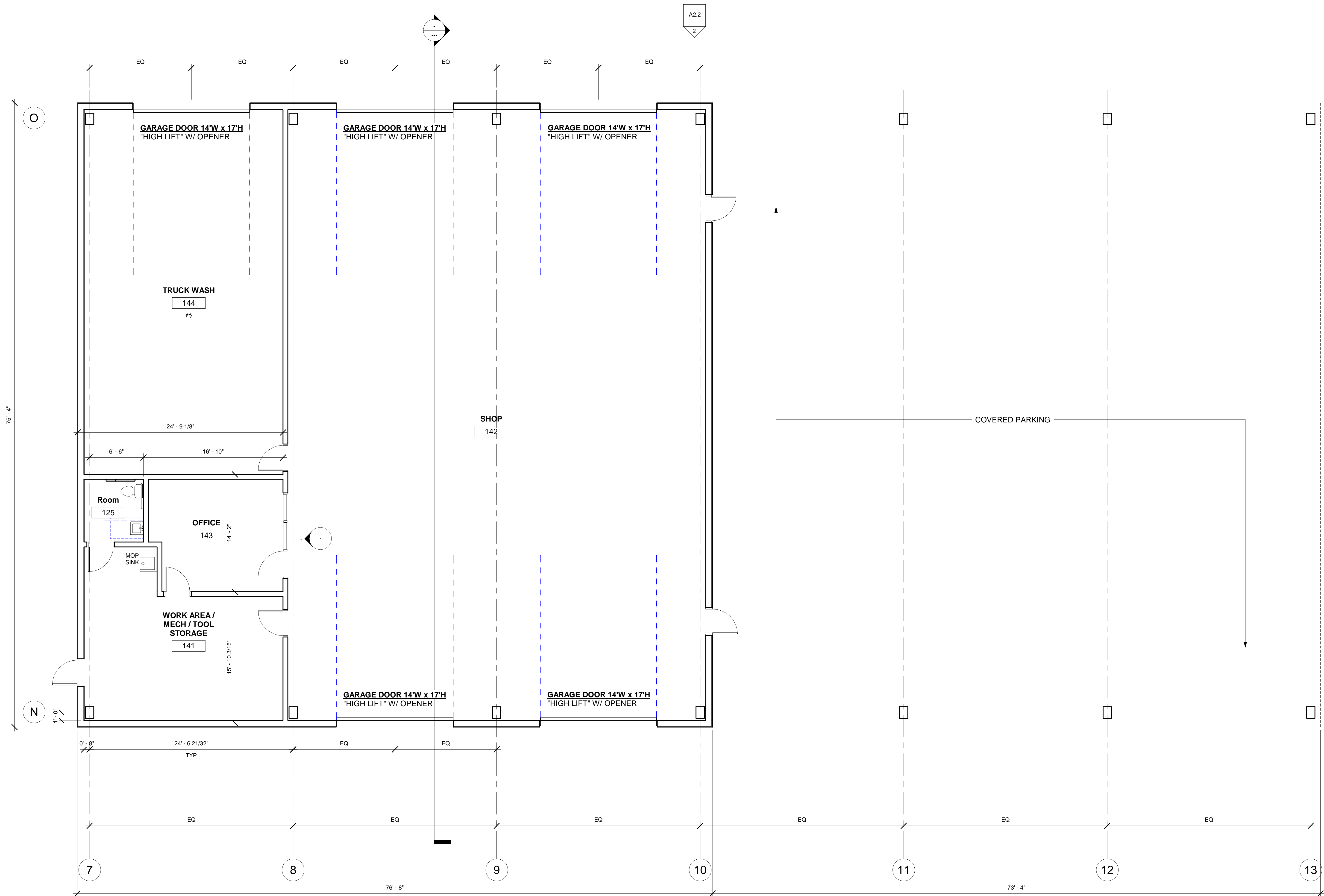
CMI OFFICE AND SHOP
CMI LIGHTING
VINT HILL LOTS 8A & 9A
FAUQUIER COUNTY, VA

Project: CMI_Office&Shop-19

PRELIM DESIGN
DATE: 01.08.2020
REVISIONS

SHEET
STORAGE / DELIVERY
PD1.2
PRELIM DESIGN

1/8/2020 4:13:35 PM
\\Heltzel\AIA Cloud\AIA Projects - Current\CMI_Office&Shop-19\Revit\CMI_Mainfile.rvt



1 PD1.3 FLOOR PLAN
3/16" = 1'-0"

COPYRIGHT JOHN F. HELTZEL AIA, PC 2019

25 years of design

John F. Heltzel AIA

A PROFESSIONAL CORPORATION
9389 FORESTWOOD LANE
MANASSAS, VIRGINIA 20110
PHONE 703-330-6170
FAX 703-361-8671
WWW.HELZELAIA.COM

CMI OFFICE AND SHOP
CMI LIGHTING
VINT HILL LOTS 8A & 9A
FAUQUIER COUNTY, VA

Project: CMI_Office&Shop-19

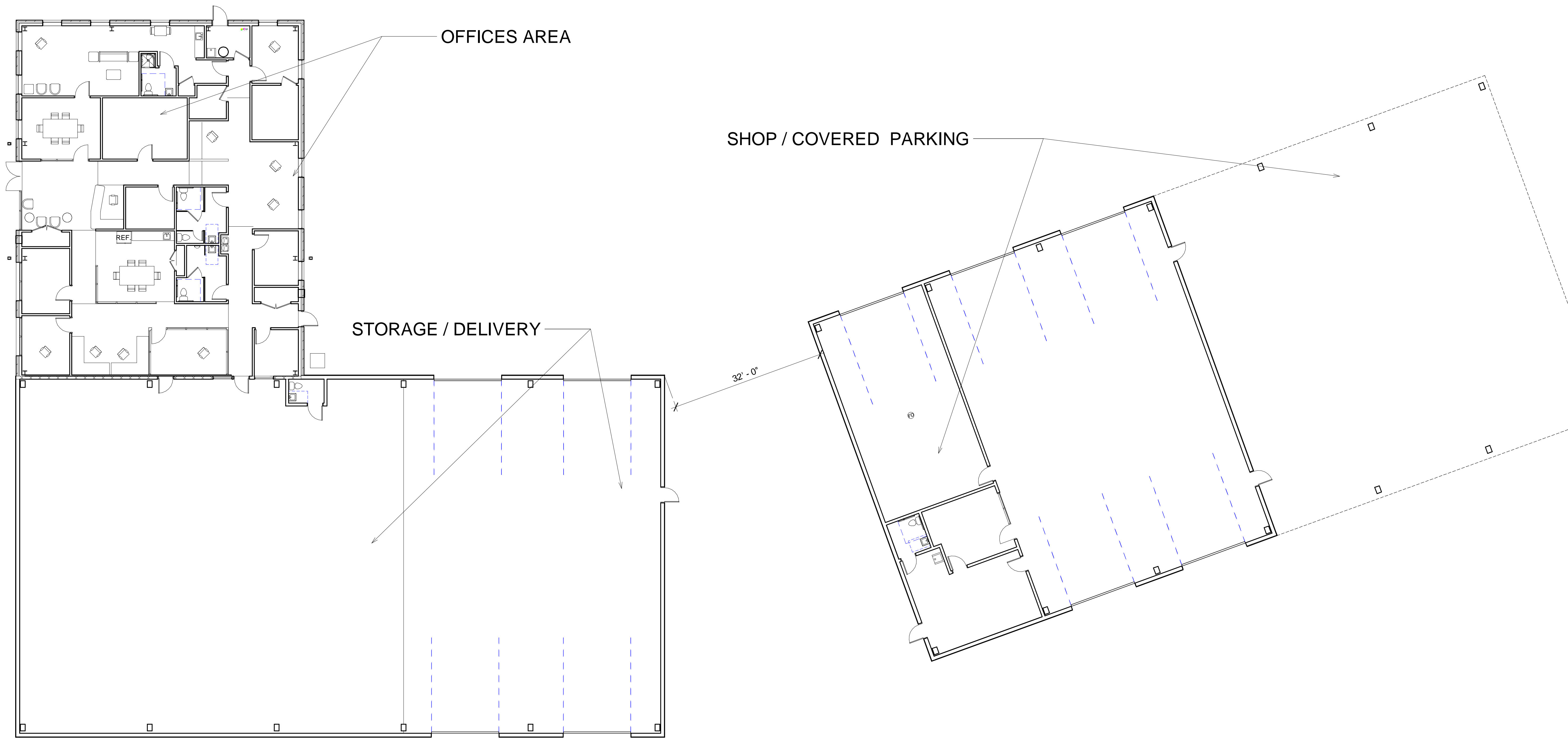
PRELIM DESIGN
DATE: 01.08.2020
REVISIONS

SHEET
SHOP & PARKING

PD1.3

PRELIM DESIGN

1/8/2020 4:13:36 PM
\\Heltzel\AIA Cloud\AIA Projects - Current\CMI_Office&Shop-19\Revit\CMI_Mainfile.rvt



① PD1 - OVERALL PLAN
3/32" = 1'-0"

COPYRIGHT JOHN F. HELTZEL AIA, PC 2019

25
years of design

John F. Heltzel
AIA

A PROFESSIONAL CORPORATION
9389 FORESTWOOD LANE
MANASSAS, VIRGINIA 20110

PHONE 703-330-6170
FAX 703-361-8671
WWW.HELZELAIA.COM

CMI OFFICE AND SHOP
CMI LIGHTING
VINT HILL LOTS 8A & 9A
FAUQUIER COUNTY, VA

Project: CMI_Office&Shop-19

PRELIM DESIGN

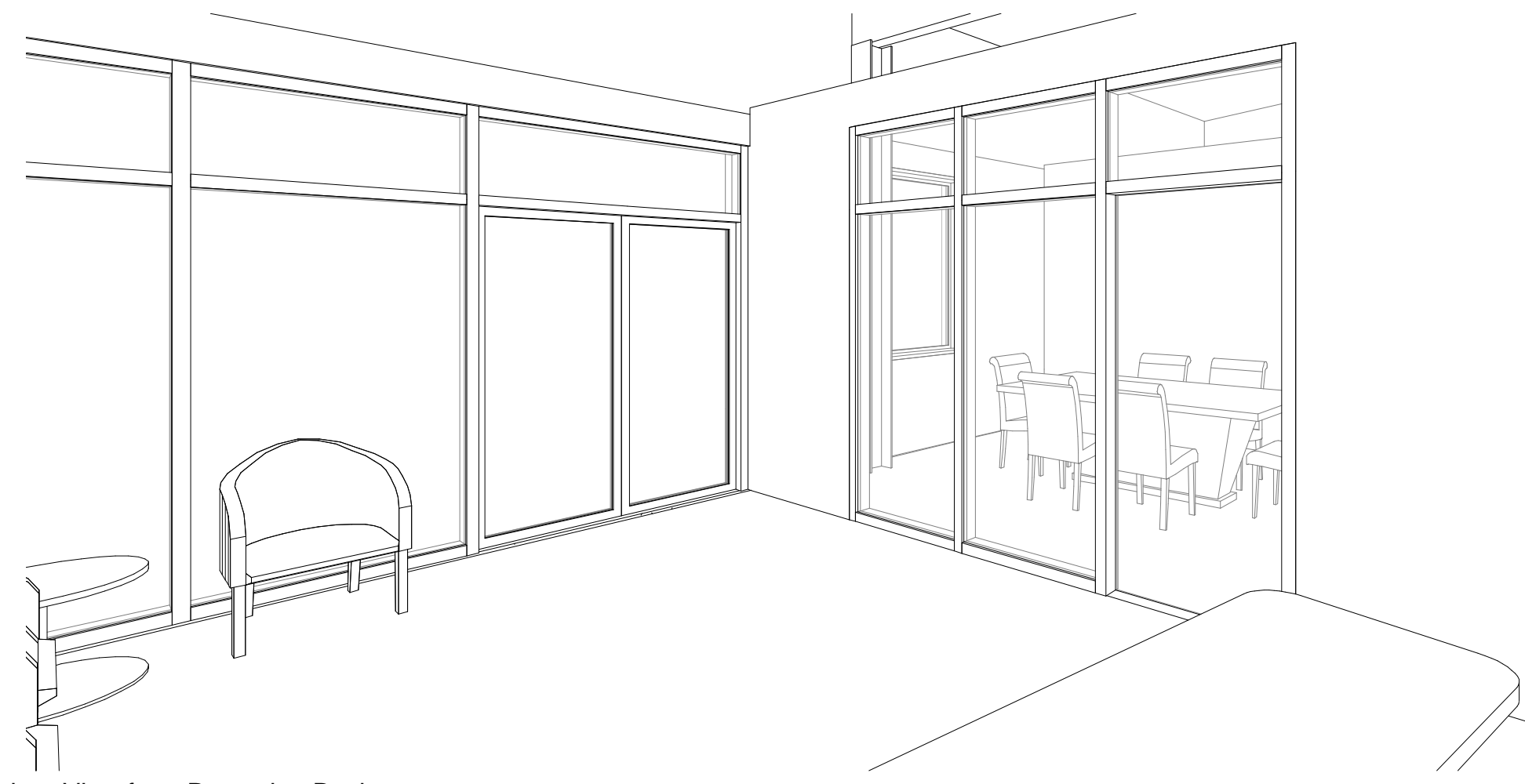
DATE: 01.08.2020

△ REVISIONS

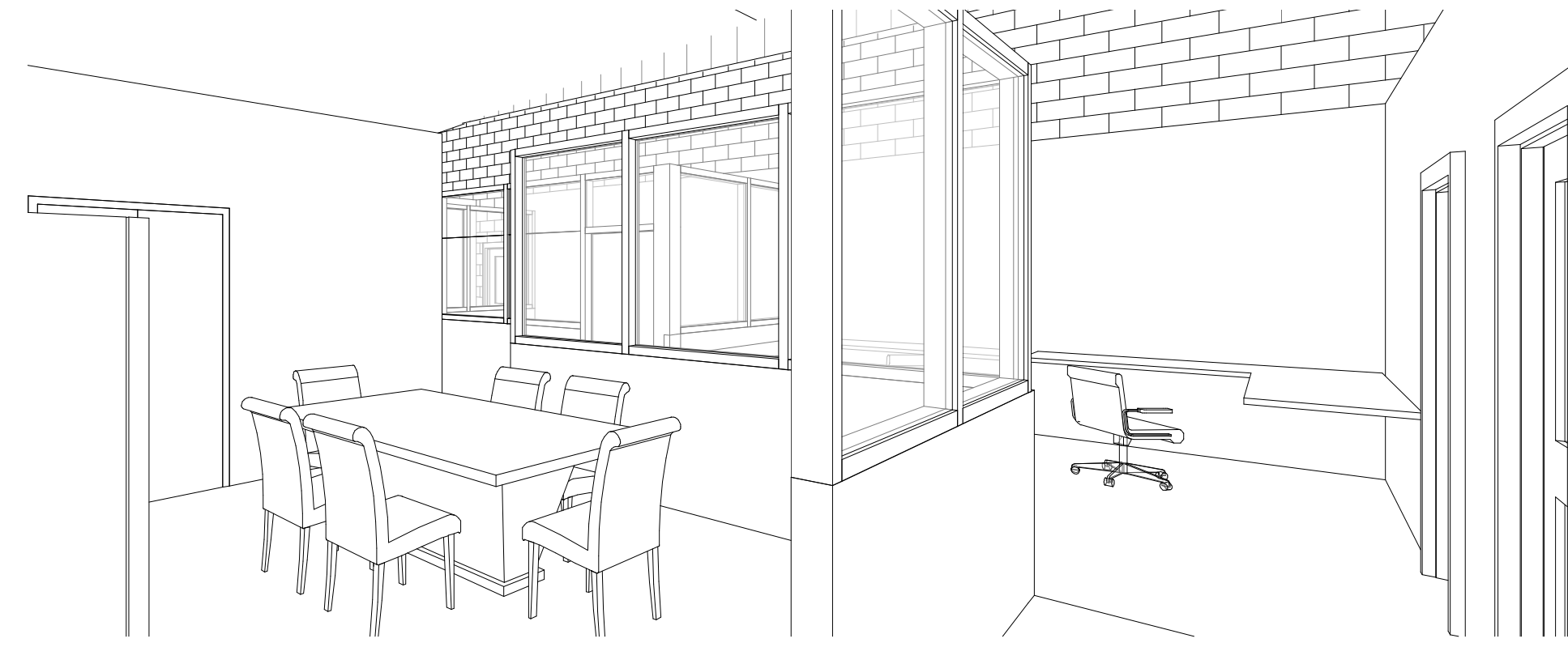
SHEET
OVERALL

PD 1

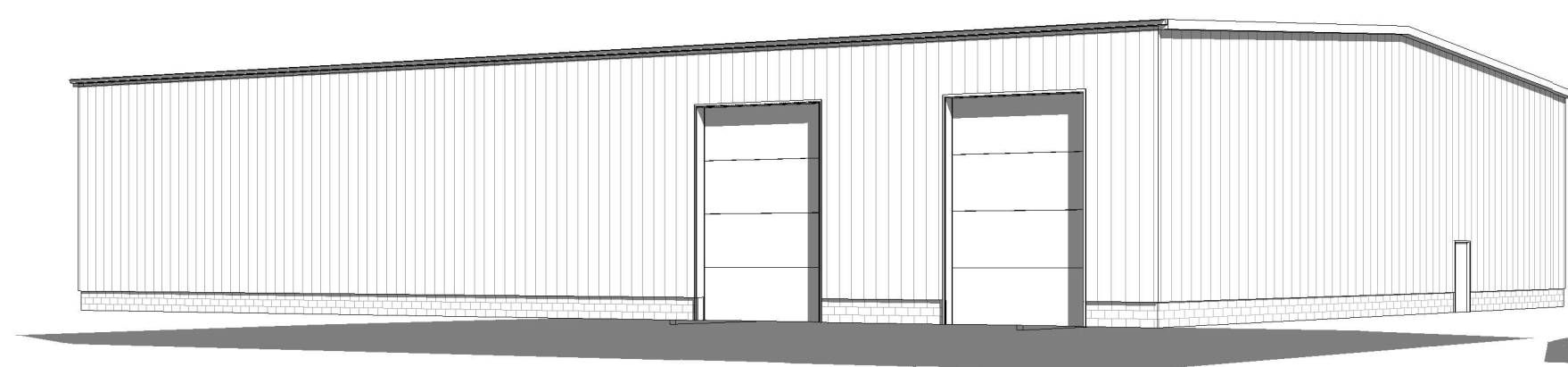
PRELIM DESIGN



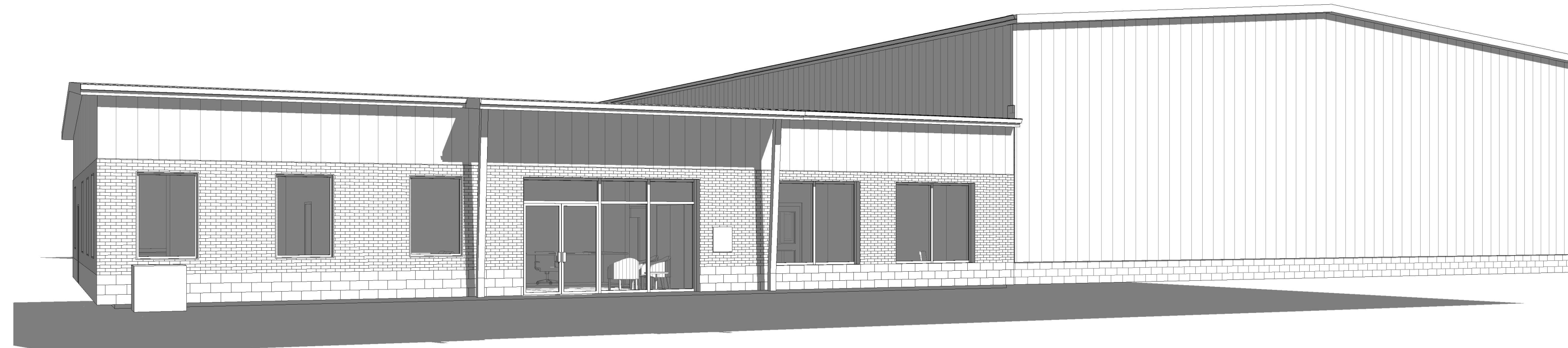
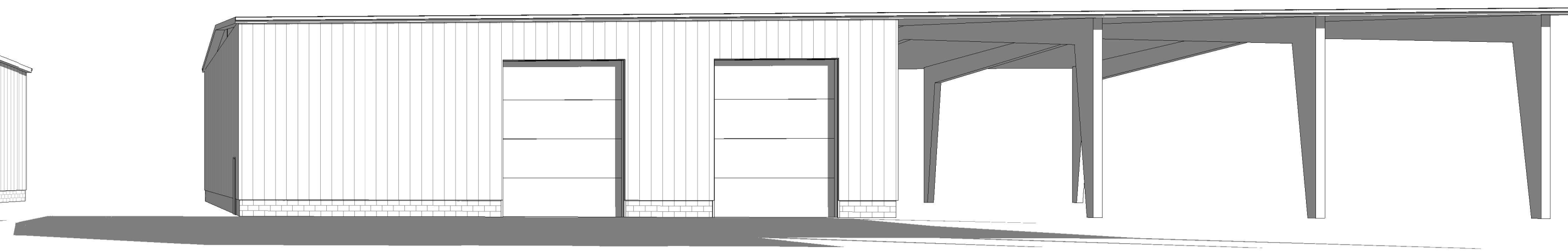
④ Iso Interior - View from Reception Desk



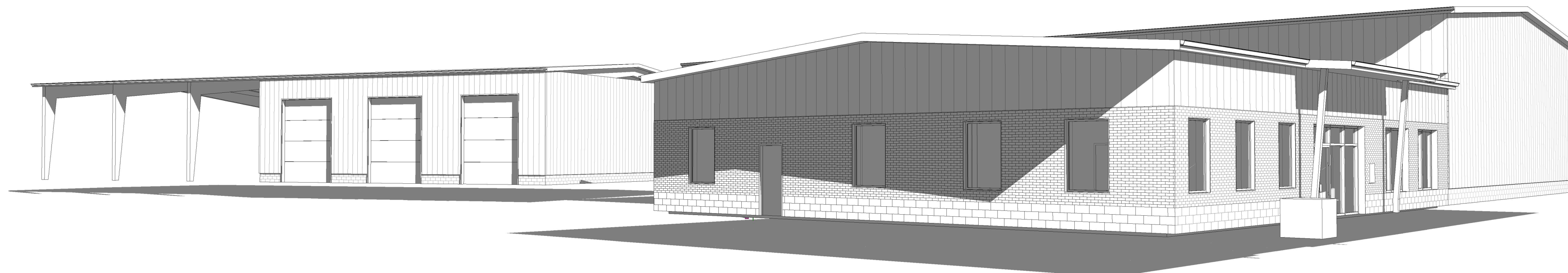
⑤ Iso Interior - Kitchen and Workspace B



③ Isometric View C - Exterior



② Isometric View B - Exterior



① Isometric View A - Exterior

25
years of design

John F.
Heltzel
AIA

A PROFESSIONAL CORPORATION
9389 FORESTWOOD LANE
MANASSAS, VIRGINIA 20110
PHONE 703-330-6170
FAX 703-361-8671
WWW.HELTELZIAIA.COM

COPYRIGHT JOHN F. HELTZEL AIA, PC 2019

CMI OFFICE AND SHOP
CMI LIGHTING
VINT HILL LOTS 8A & 9A
FAUQUIER COUNTY, VA

Project: CMI_Office&Shop-19

PRELIM DESIGN
DATE: 01/08/20
REVISIONS

SHEET
Isometric Views

PD 2

PRELIM DESIGN

1/8/2020 4:13:40 PM
\\Heltzel\as\AIA Cloud\AIA Projects - Current\CMI_Office&Shop-19\Revit\CMI_Mainfile.rvt