

24 ROLAND STREET

CHARLESTOWN, MA

1ST FLOOR (SUBDIVIDABLE) | Approx. ~1,700 - 3,789 SF



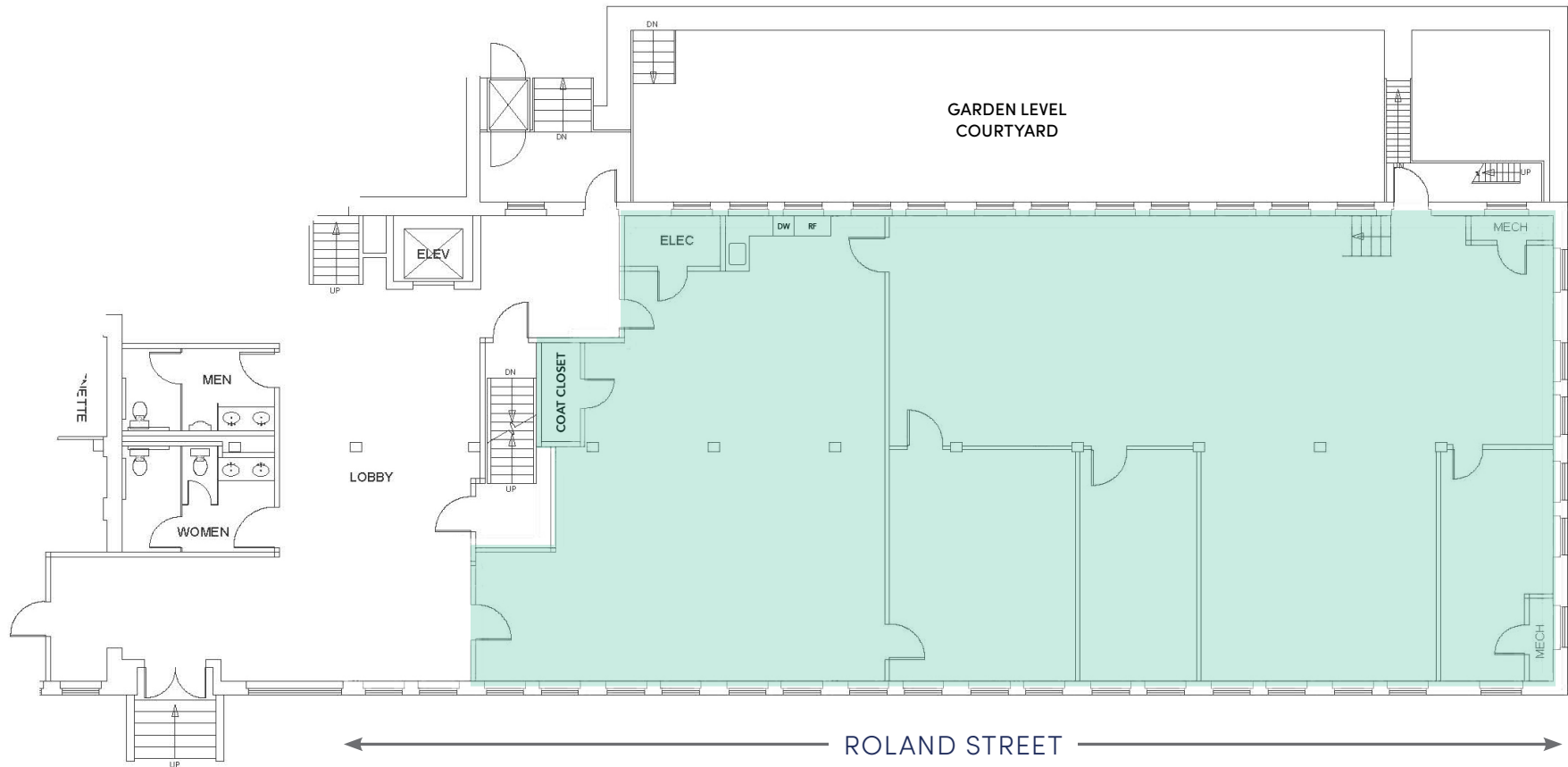
11+ FT
CEILING HEIGHT



BEAUTIFUL EXPOSED
BRICK & BEAM
THROUGHOUT



36 WINDOWS:
ABUNDANCE OF
NATURAL LIGHT



*Plan not to scale.



136 Newbury Street | Boston, MA 02116 | 617.375.7900 | BRAdvisors.com

© Copyright Boston Realty Advisors. All rights reserved. The information contained here has been obtained through sources deemed reliable but cannot be guaranteed as to its accuracy. Any information of special interest should be obtained through independent verification.

JUSTIN D. HARLOW
Managing Director

617.850.9613
jharlow@bradvisors.com

ALEKSIA BULKU
Associate

617.850.9665
abulku@bradvisors.com