

Commercial Land

1.88 Acres For Sale

2755 Haggerty Road
Commerce Twp, MI

157' Frontage Along Haggerty Road



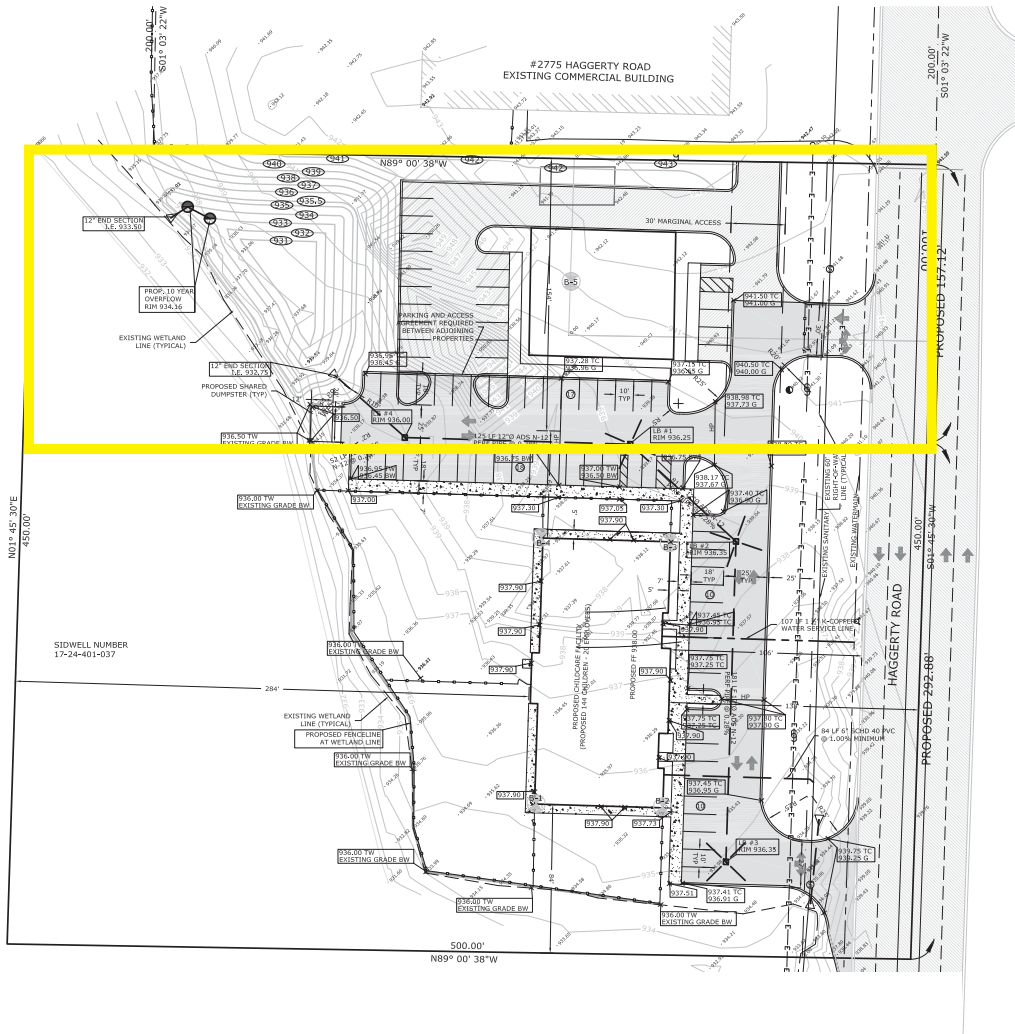
Property Highlights

- + 1.88 acres available for sale
- + Located on Haggerty Road with traffic counts exceeding 20,000 vehicles per day
- + Outstanding opportunity for banks, credit unions, general office and medical
- + Zoned O, Office
- + Nearby retailers include Walmart, Meijer, Target, Costco, Home Depot, Lowe's and many more
- + **Asking Price: \$399,000**

Macro Aerial



Site Plan



2022 Demographics	1 Mile	3 Miles	5 Miles
Population	4,138	56,050	160,355
Number of Households	1,534	22,732	65,486
Average Household Size	2.63	2.45	2.43
Average Household Income	\$149,412	\$139,041	\$140,053
Daytime Population	7,340	51,761	145,319

Commercial Land

2755 Haggerty Rd | Commerce Twp, MI 48390

For Sale

Property Photos



Contact Us

Scott Young

Senior Vice President

+1 248 936 6832

scott.young@cbre.com

Edward Wujek

Executive Vice President

+1 248 351 2058

edward.wujek@cbre.com

Matt Croswell

Vice President

+1 248 351 2084

matt.croswell@cbre.com

© 2023 CBRE, Inc. All rights reserved. This information has been obtained from sources believed reliable but has not been verified for accuracy or completeness. CBRE, Inc. makes no guarantee, representation or warranty and accepts no responsibility or liability as to the accuracy, completeness, or reliability of the information contained herein. You should conduct a careful, independent investigation of the property and verify all information. Any reliance on this information is solely at your own risk. CBRE and the CBRE logo are service marks of CBRE, Inc. All other marks displayed on this document are the property of their respective owners, and the use of such marks does not imply any affiliation with or endorsement of CBRE. Photos herein are the property of their respective owners. Use of these images without the express written consent of the owner is prohibited.