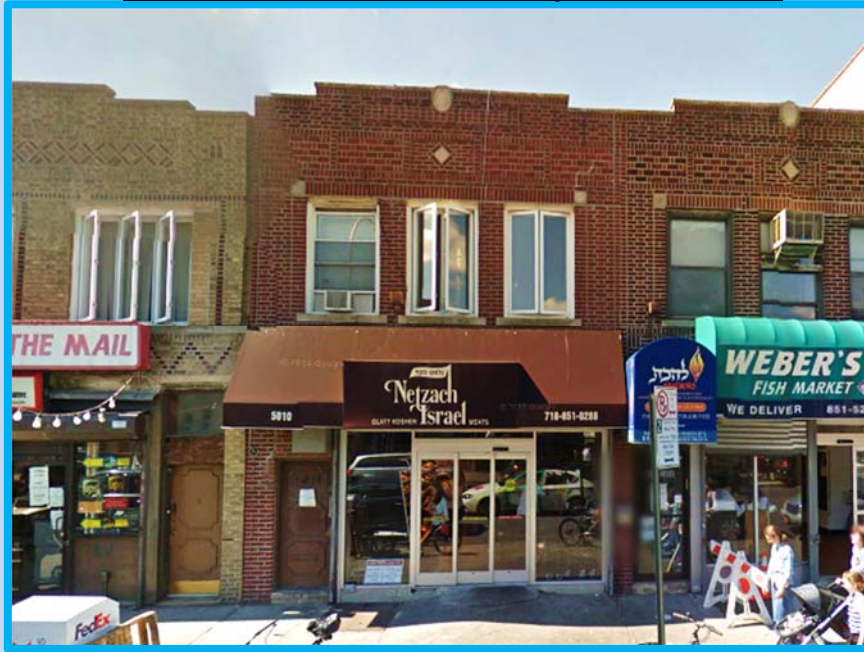


**5010 16<sup>th</sup> Avenue, Brooklyn, NY 11204**



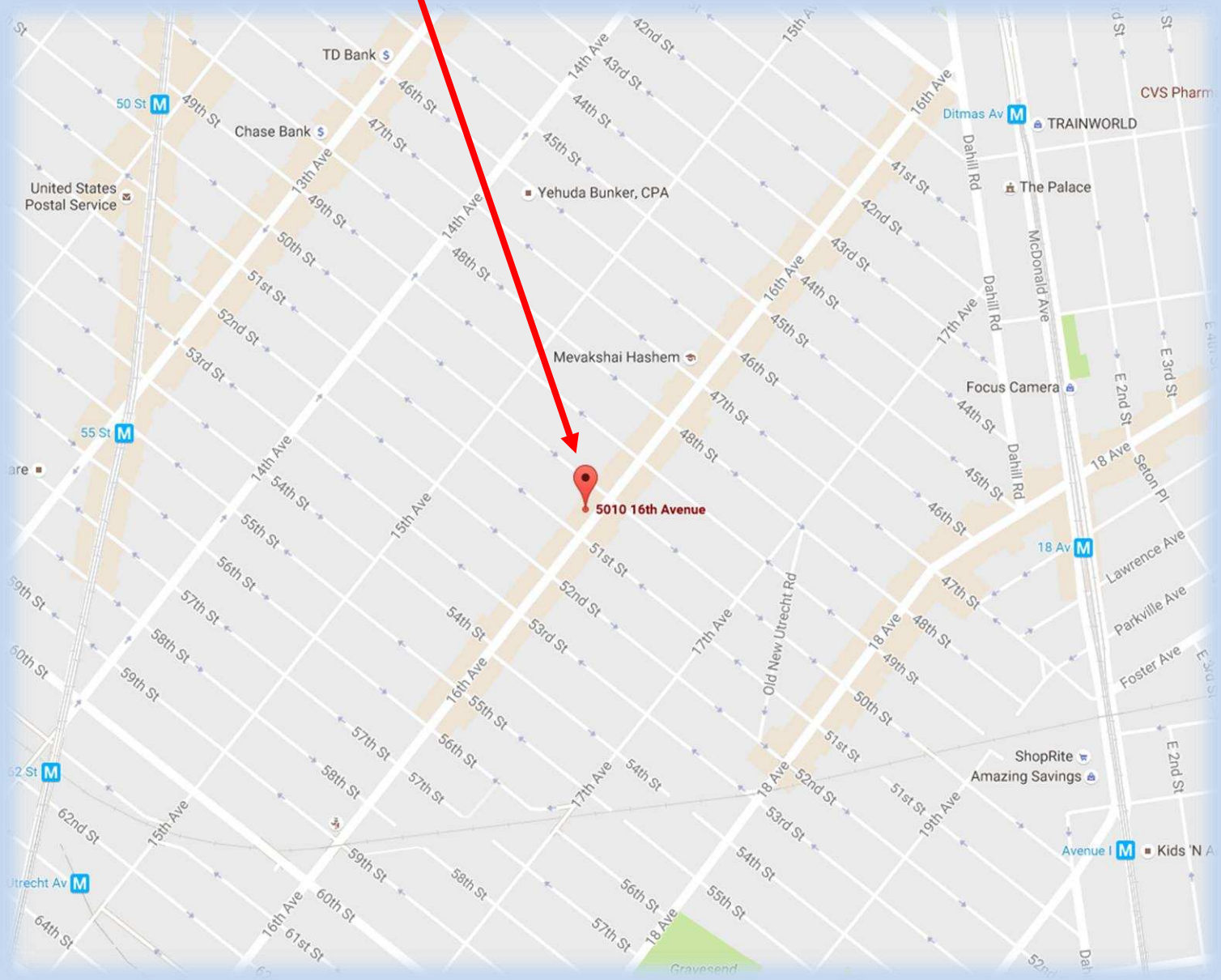
**Commercial Building Available for Sale**

<b>Location:</b>	Borough Park, N.Y. (11204)
<b>Cross Streets:</b>	Between 50 <sup>th</sup> Street & 51 <sup>st</sup> Street
<b>Lot Dimensions:</b>	20 x 60
<b>Lot Size:</b>	1,200 SF
<b>Building Dimensions:</b>	20 x 60
<b>Building Size:</b>	2,200 SF
<b>Layout:</b>	Retail Unit on Ground Floor (20 x 60) Office Space on Second Floor (20 x 50)
<b>Zoning:</b>	R6, C1-3
<b>Annual Income:</b>	\$78,000
<b>Taxes:</b>	\$14,052
<b>Price:</b>	<b>\$1,800,000</b>
<b>Notes:</b>	*Delivered Vacant *10 Minute Walk to the D Subway Line and F Subway Line

**For more information please contact:**

**Leiby Gold 718-256-9595 Ext. 122 / 917-691-3403 or Email: [Lgold@eretzltd.com](mailto:Lgold@eretzltd.com)**

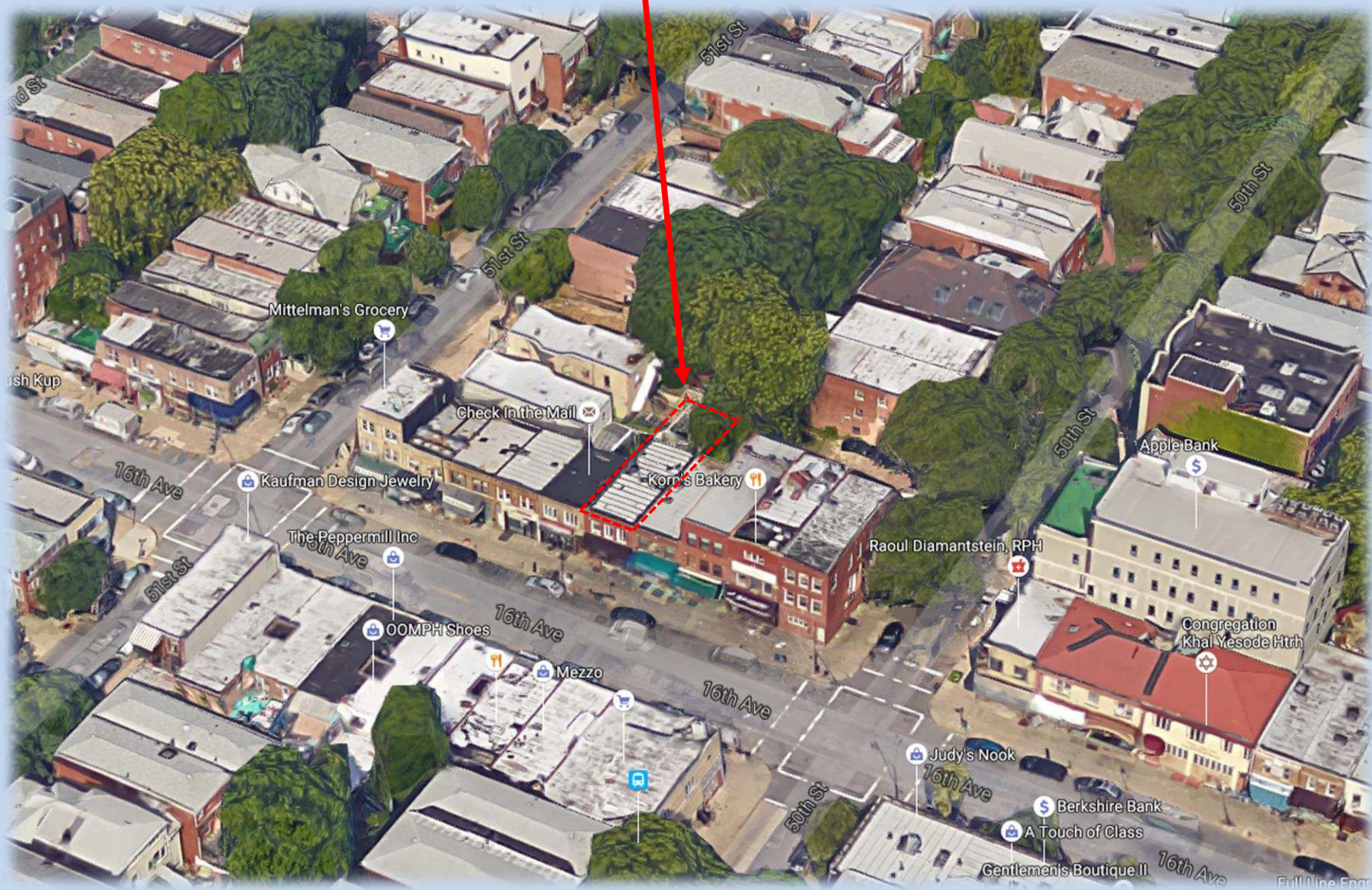
**5010 16<sup>th</sup> Avenue  
Brooklyn, N.Y. 11204**





**5010 16th Avenue  
Brooklyn, N.Y. 11204**

**ERETZ  
REALTY**





**5010 16<sup>th</sup> Avenue  
Brooklyn, N.Y. 11204**



## Tax map & Building Footprint