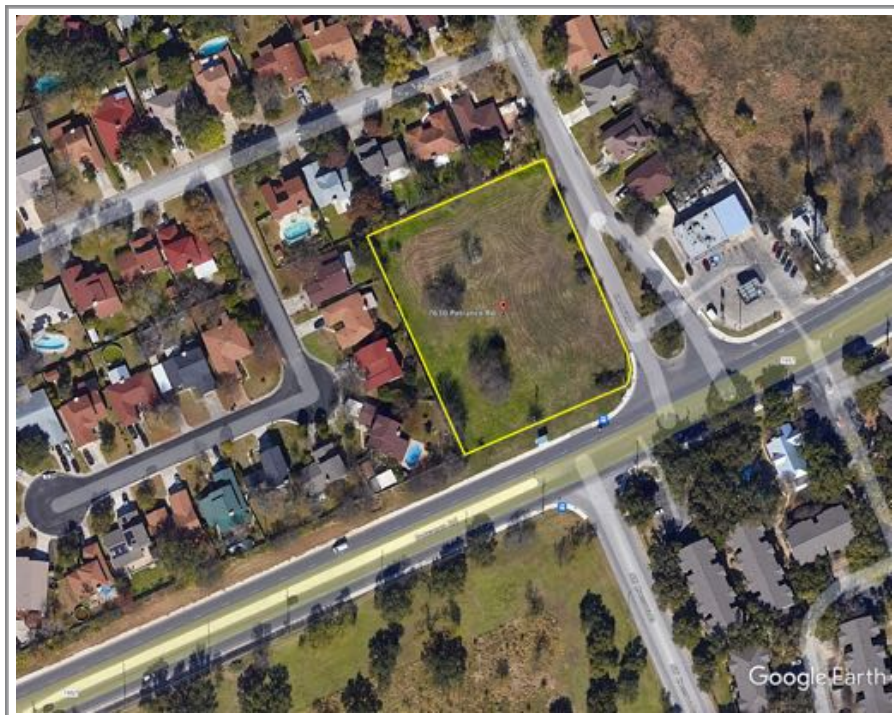


7630 Potranco Rd, San Antonio



Location: Northwest quadrant of San Antonio just outside Loop 410 and west of Culebra. 2/10 of a mile from Culebra & less than 1/2 mile from Loop 410.

Description: An approximate 1.774 acre tract (77,275 sq. ft). Hard corner intersection of Potranco Rd and Stedwick Dr. Flat topography. Highly visible on busy Potranco.



Offering Price:
\$11.50 per sq. ft.
(\$888,667.56)

All information contained herein, while gathered from sources believed to be reliable and accurate, is submitted without representation or warranty as to the accuracy thereof. It is presented subject to errors, omissions, change of price, prior sale/lease or withdrawal from the market without notice. Broker advises any buyer to rely on their own due diligence analysis for verification of information they may deem pertinent for their intended use.



All information contained herein, while gathered from sources believed to be reliable and accurate, is submitted without representation or warranty as to the accuracy thereof. It is presented subject to errors, omissions, change of price, prior sale/lease or withdrawal from the market without notice. Broker advises any buyer to rely on their own due diligence analysis for verification of information they may deem pertinent for their intended use.