

# *threefifty*

FAIRFIELD

UP TO  
**60,000 SF**

---

**A PREMIER OFFICE DESTINATION**  
IN DOWNTOWN BRIDGEPORT WITH  
VIEWS OF GREATER BRIDGEPORT  
AND LONG ISLAND SOUND



CUSHMAN &  
WAKEFIELD



# YOUR OFFICE, YOUR ADVANTAGE

## PRIME DOWNTOWN LOCATION



Ideally positioned in Downtown Bridgeport, steps from business, dining, and entertainment



Immediate access to I-95, Route 8/25 Connector



Conveniently near Bridgeport Train Station and Port Jefferson Ferry Terminal for seamless commuting



10 Minutes (3 exits) from Sikorsky Airport



20 miles from Downtown Stamford

Tenant spaces as small as 1,300 SF  
to full floor of 18,000 SF

Expansive floor plates offering up to  
37,222 SF of contiguous space

Upper floors with sweeping views of Greater  
Bridgeport and Long Island Sound

Ample structured parking available directly  
across the street

On-site security with a managed security desk  
and 24/7 key access

The building is under new ownership and  
committed to capital improvements



## *ELEVATED* WORKPLACE EXPERIENCE

# SEAMLESS ACCESS TO EVERYTHING


**350 FAIRFIELD AVENUE**  
OFFERS PRIME ACCESS  
TO KEY TRANSIT AND  
LIFESTYLE AMENITIES

- » Easy access to I-95 and Route 8/25 Connector
- » Bridgeport Train Station and Port Jefferson Ferry Terminal just blocks away, with direct routes to NYC
- » Walk to a variety of restaurants, cafés, and retail shops in Downtown Bridgeport



**350 FAIRFIELD AVENUE**  
IS STEPS AWAY FROM  
BRIDGEPORT'S BEST DINING  
AND ENTERTAINMENT

  
**VIBRANT  
WATERFRONT  
DINING AND  
CASUAL EATERIES**

  
**CLOSE TO  
TWO MAJOR  
ENTERTAINMENT  
VENUES**





# AVAILABLE SPACES

**A RARE OPPORTUNITY TO  
SECURE MODERN OFFICE  
SPACE IN A THRIVING BUSINESS  
DISTRICT WITH UNBEATABLE  
ACCESSIBILITY.**

---

## **3<sup>RD</sup> FLOOR**

1,500 SF - 18,530 SF

## **4<sup>TH</sup> FLOOR**

1,306 SF - 18,692 SF

## **7<sup>TH</sup> FLOOR**

19,272 SF



Building under new ownership



Flexible floorplate options



Free parking garage



# 3<sup>RD</sup> FLOOR

1,500 - 18,530 SF



Fully Built-Out  
as Standard  
Office



Reception  
Area



18 Private  
Offices



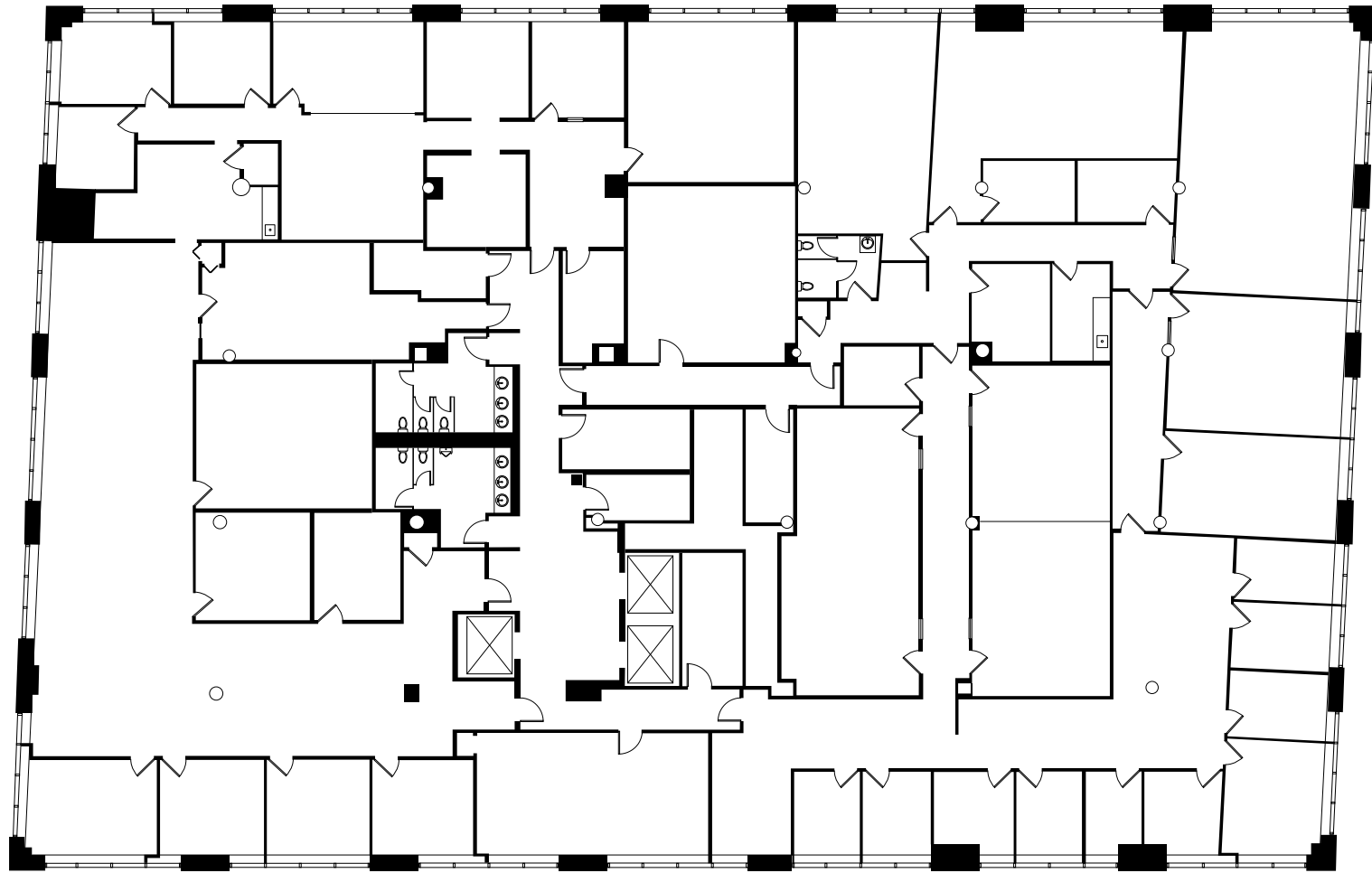
Wi-Fi  
Connectivity



Plug + Play



5 Conference  
Rooms



# 4<sup>TH</sup> FLOOR

1,306 - 18,692 SF



Fully Built-Out  
as Standard  
Office



Reception  
Area



13 Private  
Offices



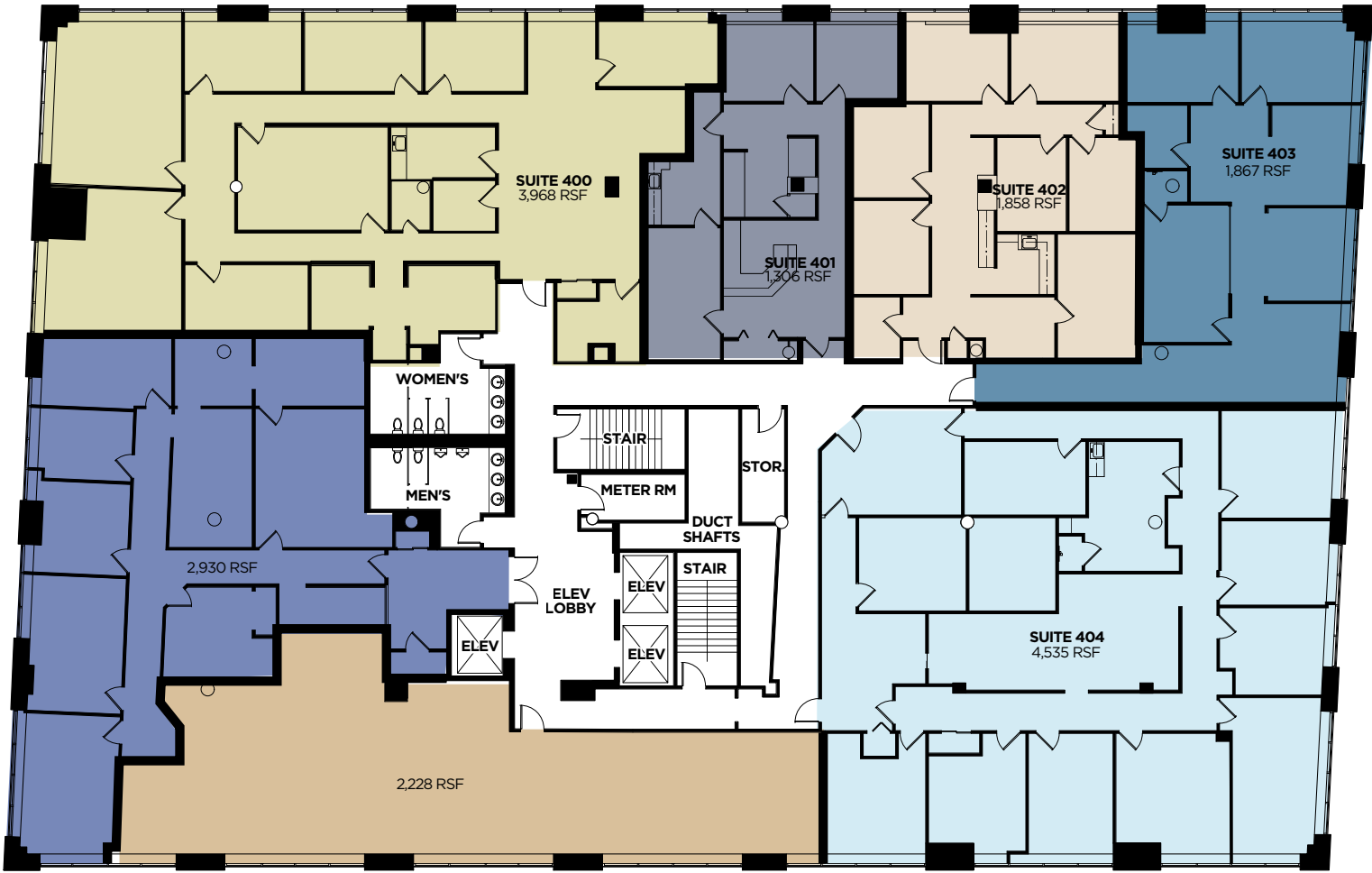
Space is in  
Excellent  
Condition



Plug + Play



5 Conference  
Rooms



# 7<sup>TH</sup> FLOOR

19,272 SF



Plug + Play



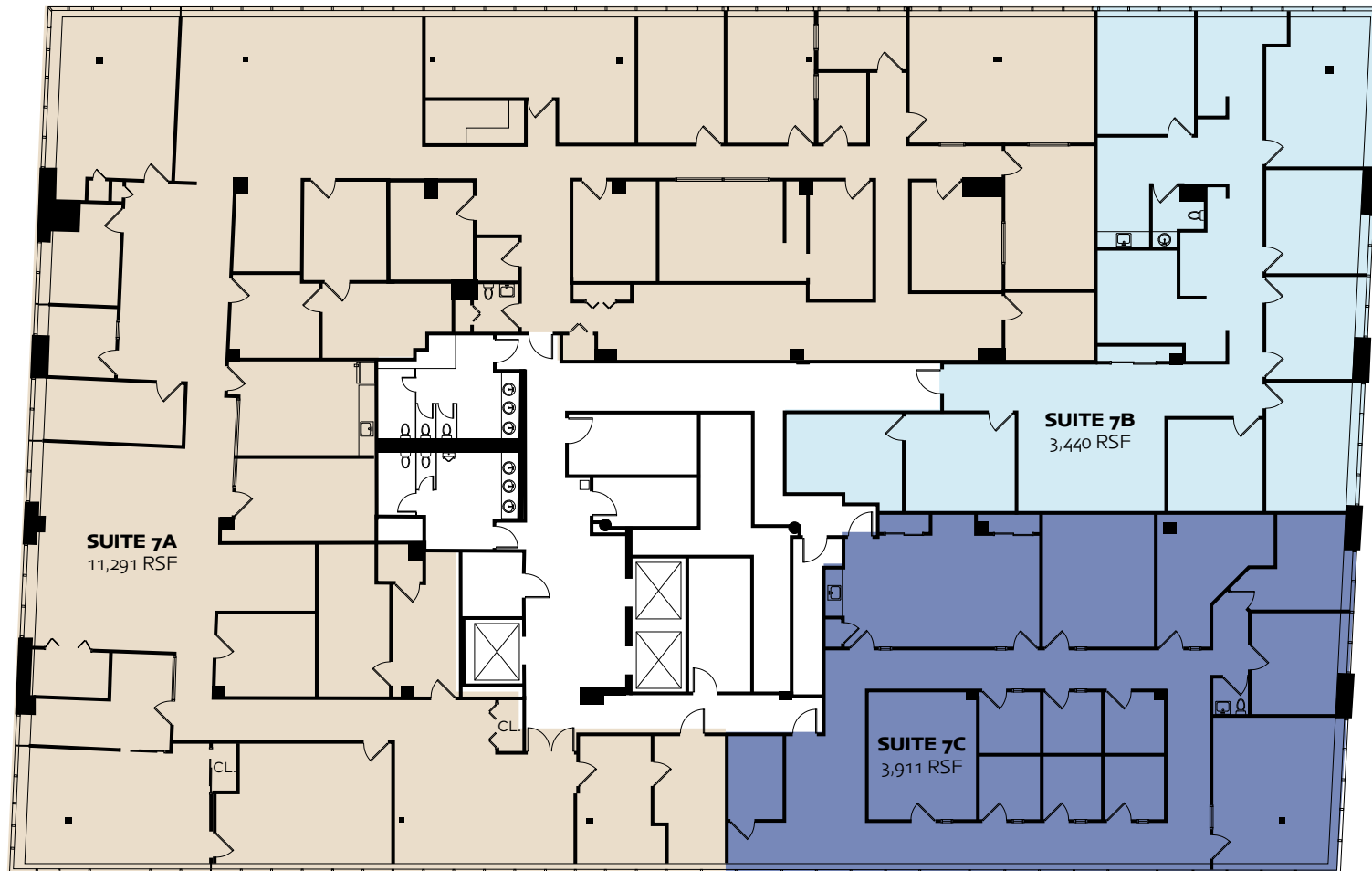
Fully Built-Out  
as Standard  
Office



15 Private  
Offices



3 Conference  
Rooms



# *threefifty*

## FAIRFIELD

### SCHEDULE A TOUR TODAY

**BOB MOTLEY**

Senior Director

+1 860 616 1432

[robert.motley@cushwake.com](mailto:robert.motley@cushwake.com)

**KEVIN FOLEY**

Executive Managing Director

+1 203 326 5814

[kevin.foley@cushwake.com](mailto:kevin.foley@cushwake.com)



©2025 Cushman & Wakefield. All rights reserved. The information contained in this communication is strictly confidential. This information has been obtained from sources believed to be reliable but has not been verified. NO WARRANTY OR REPRESENTATION, EXPRESS OR IMPLIED, IS MADE AS TO THE CONDITION OF THE PROPERTY (OR PROPERTIES) REFERENCED HEREIN OR AS TO THE ACCURACY OR COMPLETENESS OF THE INFORMATION CONTAINED HEREIN, AND SAME IS SUBMITTED SUBJECT TO ERRORS, OMISSIONS, CHANGE OF PRICE, RENTAL OR OTHER CONDITIONS, WITHDRAWAL WITHOUT NOTICE, AND TO ANY SPECIAL LISTING CONDITIONS IMPOSED BY THE PROPERTY OWNER(S). ANY PROJECTIONS, OPINIONS OR ESTIMATES ARE SUBJECT TO UNCERTAINTY AND DO NOT SIGNIFY CURRENT OR FUTURE PROPERTY PERFORMANCE.