

RETAIL SPACE FOR LEASE



PLAINVILLE PLAZA

25 Taunton Street, Plainville, MA 02762

DAN FEINER

Vice President
401.751.3200 x310
dan@mgcommercial.com

MG COMMERCIAL

365 Eddy Street, Penthouse Suite
Providence, RI 02903
401.751.3200 | mgcommercial.com

PROPERTY SUMMARY



PROPERTY DESCRIPTION

Plainville Plaza is a 15,500 SF retail strip shopping center with 62 parking spaces, nice landscaping and strong curb appeal. There are two spaces available in this busy plaza. Unit #3 is 2,134 SF with open floor plan and Unit #7 is a 1,627 SF end cap. The center has plenty of storefront windows allowing for natural light and has pylon signage available.

PROPERTY HIGHLIGHTS

- Excellent Visibility from the Street
- Strong Demographics with High Income
- Busy Trade Area
- Perfect for retail use (nail salon), small office or Sales/Service
- Pylon Signage Available

SPACES	LEASE RATE	SPACE SIZE
Unit #3	\$15.00 SF/yr	2,134 SF
Unit #7 - End Cap	\$15.00 SF/yr	1,627 SF

LOCATION DESCRIPTION

Ideally located within the Plainville shopping corridor. Plainville Plaza is easily accessible from Mansfield, Foxboro & North Attleboro. It is located directly on Taunton Street (Route 152) near the intersection of Messenger Street (Route 106). The plaza is in close proximity to national and local retailers including retail banking, restaurants, gas stations and Sturdy Memorial Hospital. Busy trade area.

OFFERING SUMMARY

Lease Rate:	\$15.00 SF/yr (NNN)
Available SF:	1,627 - 2,134 SF
Building Size:	15,500 SF

DEMOGRAPHICS	1 MILE	5 MILES	10 MILES
Total Households	1,017	27,206	122,327
Total Population	2,755	71,934	335,296
Average HH Income	\$93,098	\$94,259	\$92,616

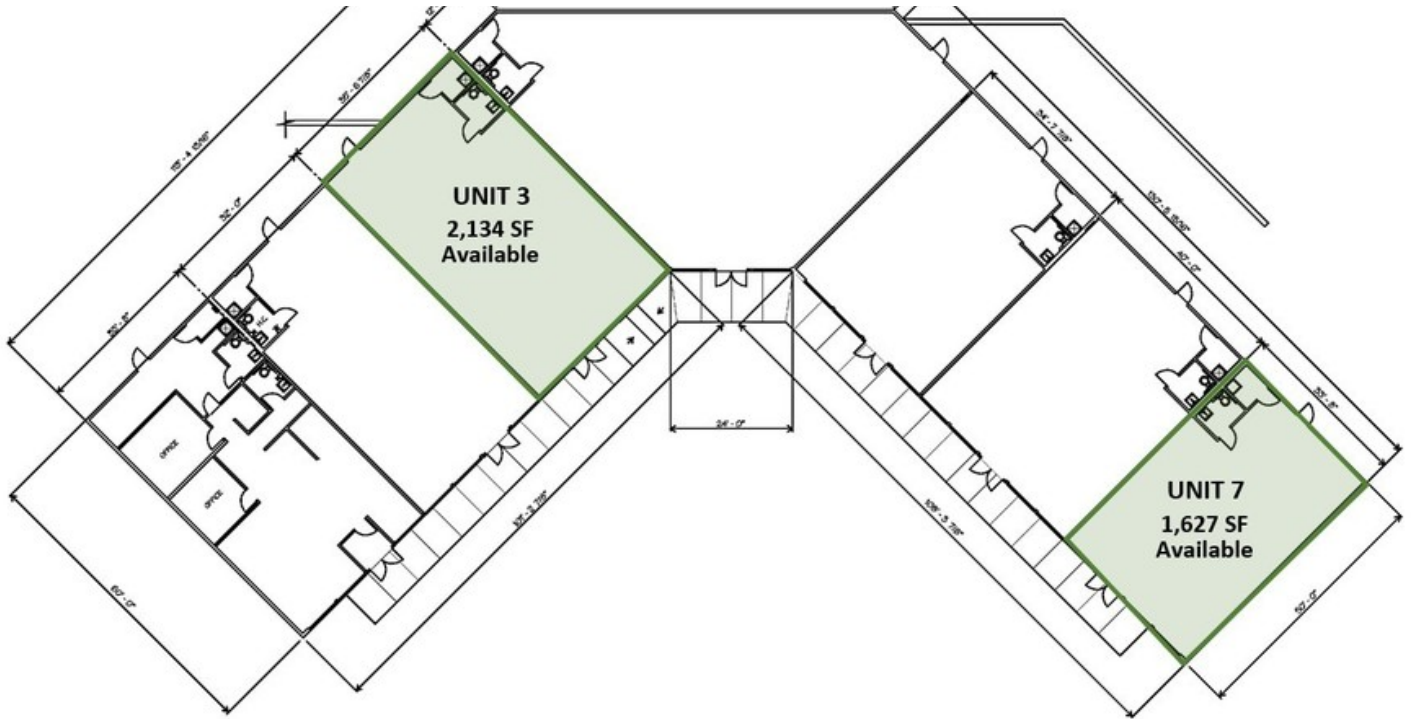
DAN FEINER

Vice President
401.751.3200 x310
dan@mgcommercial.com

365 Eddy Street, Penthouse Suite
Providence, RI 02903
mgcommercial.com



ADDITIONAL PHOTOS



DAN FEINER
Vice President
401.751.3200 x310
dan@mgcommercial.com

365 Eddy Street, Penthouse Suite
Providence, RI 02903
mgcommercial.com



RETAILER MAP



DAN FEINER
Vice President
401.751.3200 x310
dan@mgcommercial.com

365 Eddy Street, Penthouse Suite
Providence, RI 02903
mgcommercial.com

