



PRIME RESTAURANT/RETAIL SPACE AVAILABLE

2270 CENTRAL AVE | ST. PETERSBURG, FL



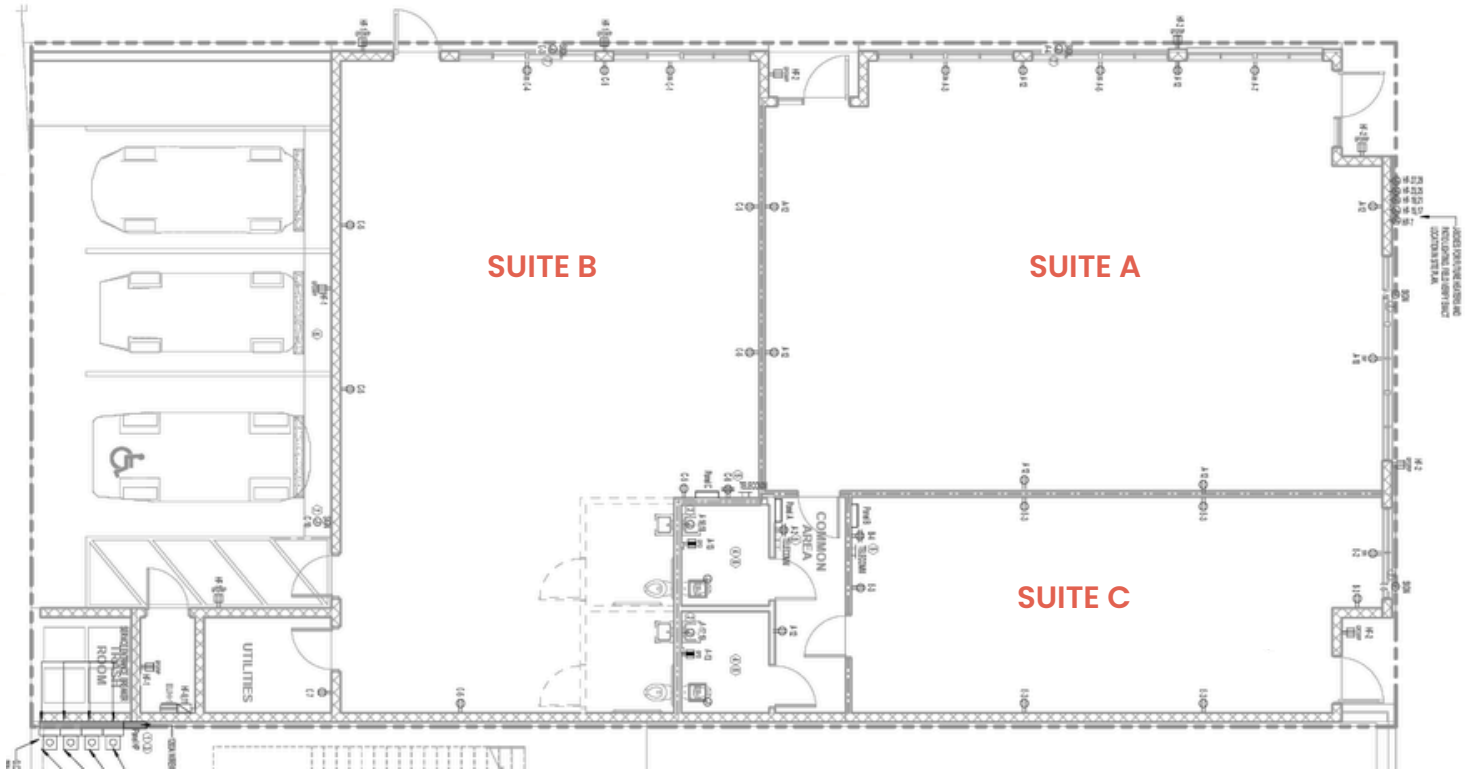
VIEW FROM CENTRAL AVE



PROPERTY HIGHLIGHTS

- TOTAL AVAILABLE SPACE: 3,900 SF MOL
 - CAN BE DEMISED UP TO 3 TIMES
- LOCATED ON THE CORNER OF 23RD STREET & CENTRAL AVE
- 100+ OUTDOOR SEATING WITH A LANDSCAPED BULB OUT
- ZONING: CCT-2
- SEEKING EXPERIENCED RESTAURANT USER

700-3,900 SF MOL AVAILABLE



GRAND CENTRAL DISTRICT



POPULATION



1 MILE-14,065
3 MILES-125,935
5 MILES-267,809

HOUSEHOLDS



1 MILE- 7,096
3 MILES- 60,805
5 MILES- 125,924

HOUSEHOLD INCOME



1 MILE- \$91,809
3 MILES- \$104,838
5 MILES- \$107,382

MEDIAN AGE: 46.1

LYDIA KRESSEL

LYDIA@ARCHERGROUPRE.COM
571.882.4712

KYLE MASTERSON

KYLE@ARCHERGROUPRE.COM
727.656.8337



📞 813.463.0163

🌐 archergroupe.com

📍 2412 Central Ave | St. Pete

LIC. REAL ESTATE BROKER