

For Lease

Office



1600 E Beltline Ave. NE

Grand Rapids, MI, 49525

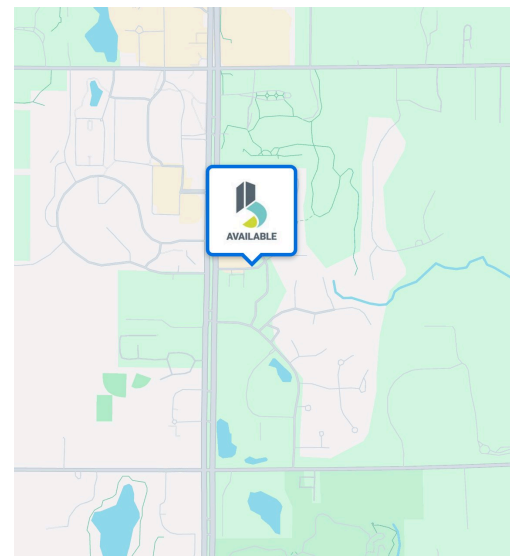
Suites 213 & 210 at 1600 East Beltline Ave NE offer professional second-floor office space in a beautifully maintained building along one of Grand Rapids' premier business corridors. Featuring high ceilings, abundant natural light, and a polished professional atmosphere, these suites provide an inviting environment for both employees and clients. Conveniently located near I-96 and the East Beltline, the property offers excellent accessibility along with close proximity to dining, retail, and everyday amenities.

Highlights

- Professional second-floor office suites available in a beautifully maintained Class A office building
- Abundant natural light and high ceilings create an open, bright, and welcoming work environment.
- Attractive common areas, professional image, and ample on-site parking.
- Conveniently located just minutes from I-96 and the East Beltline, providing excellent accessibility for clients and employees.

Suite 210 \$4,250/Month (2,250 SF)

Suite 213 \$1,200/Month (563 SF)

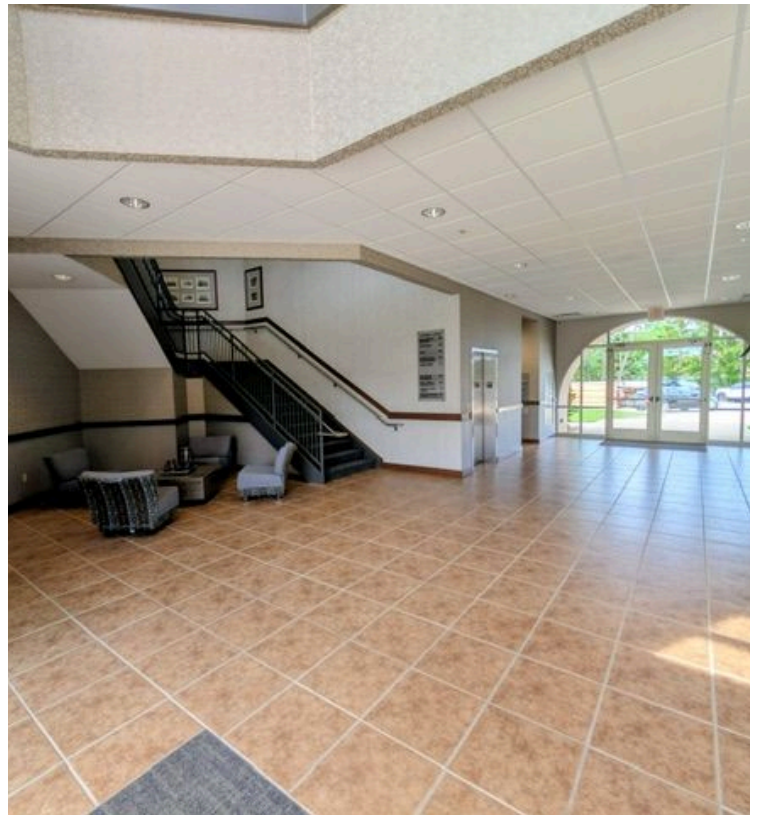


Teresa Datema
Advisor, Healthcare Facilities
tdatema@bradleyco.com
c 616.309.7395

Peter Cachey
Advisor
pcachey@bradleyco.com
c 616.259.6386

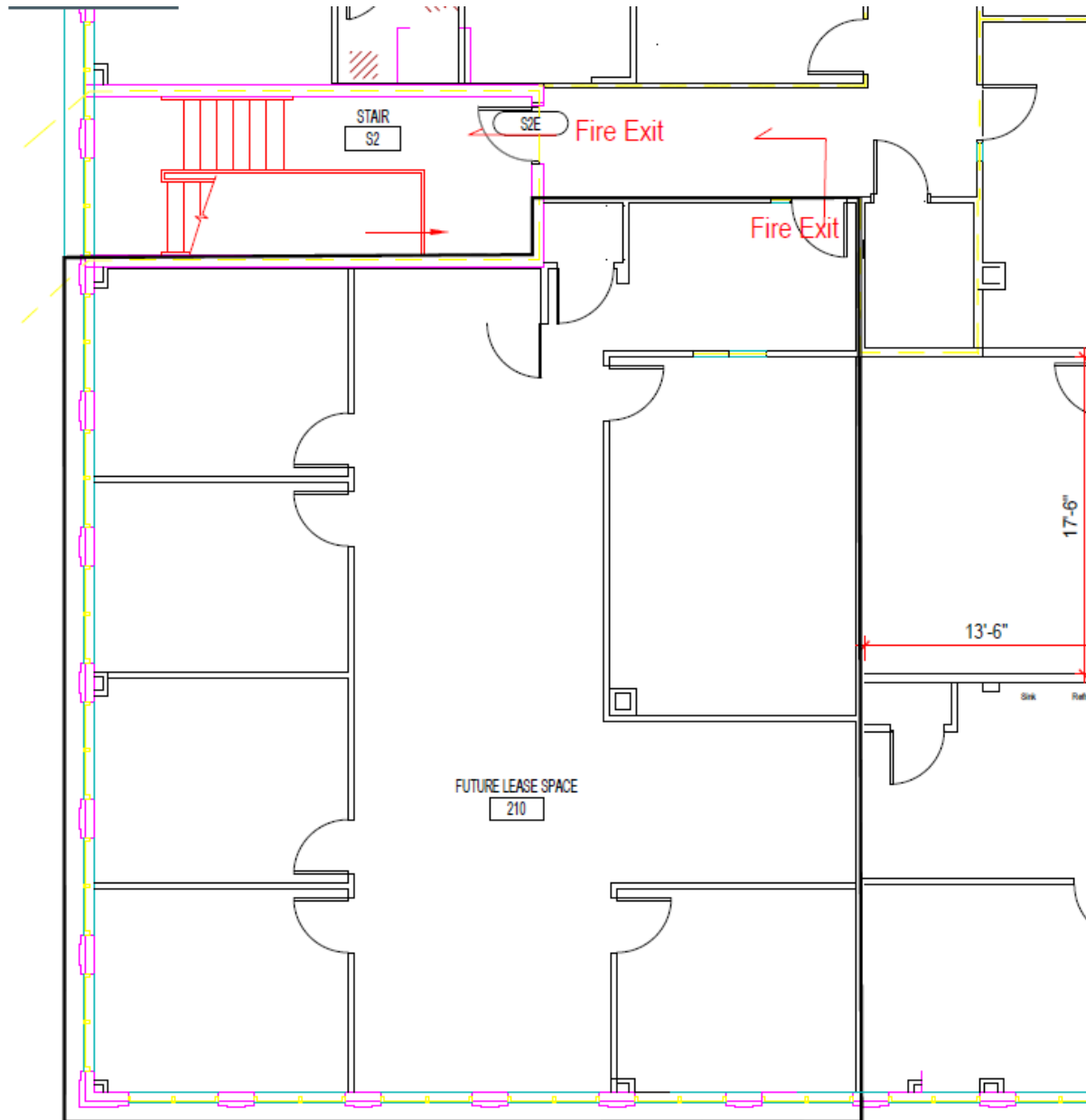
Additional Photos

1600 East Beltline Ave. NE, Grand Rapids, MI 49525



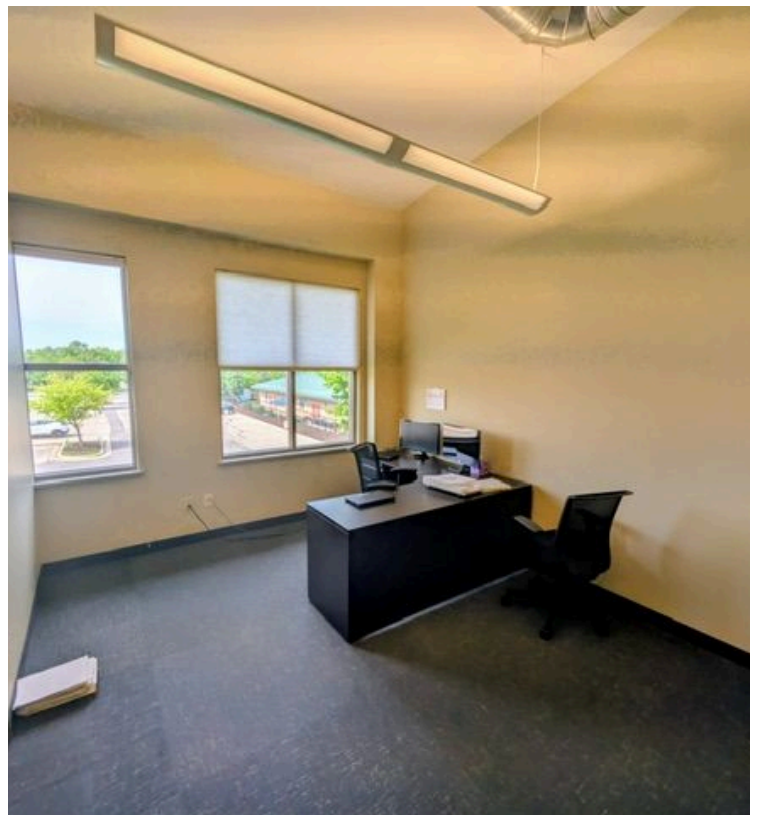
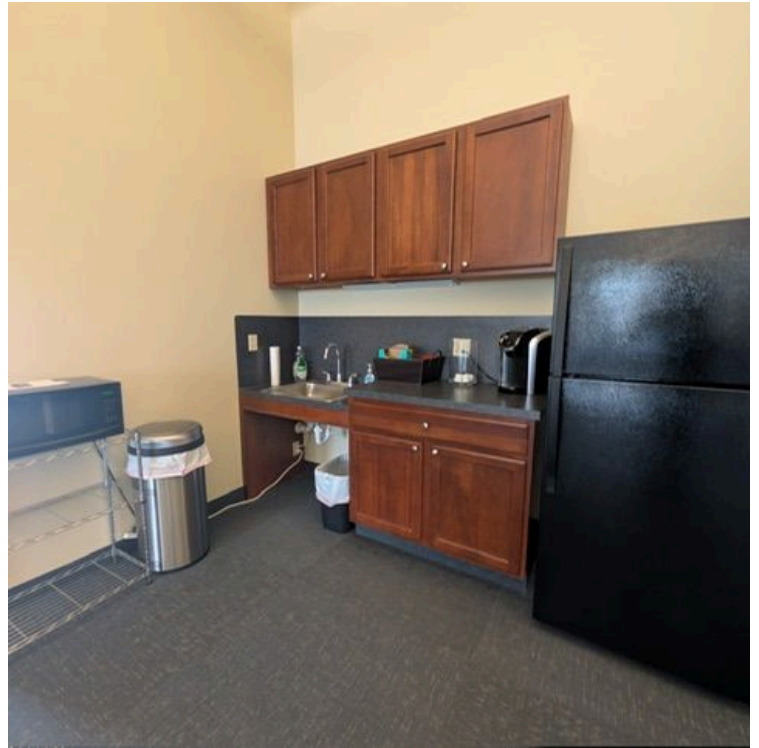
Suite 210 Floor Plan

1600 East Beltline Ave. NE, Grand Rapids, MI 49525



Suite 210

1600 East Beltline Ave. NE, Grand Rapids, MI 49525



Suite 213

1600 East Beltline Ave. NE, Grand Rapids, MI 49525



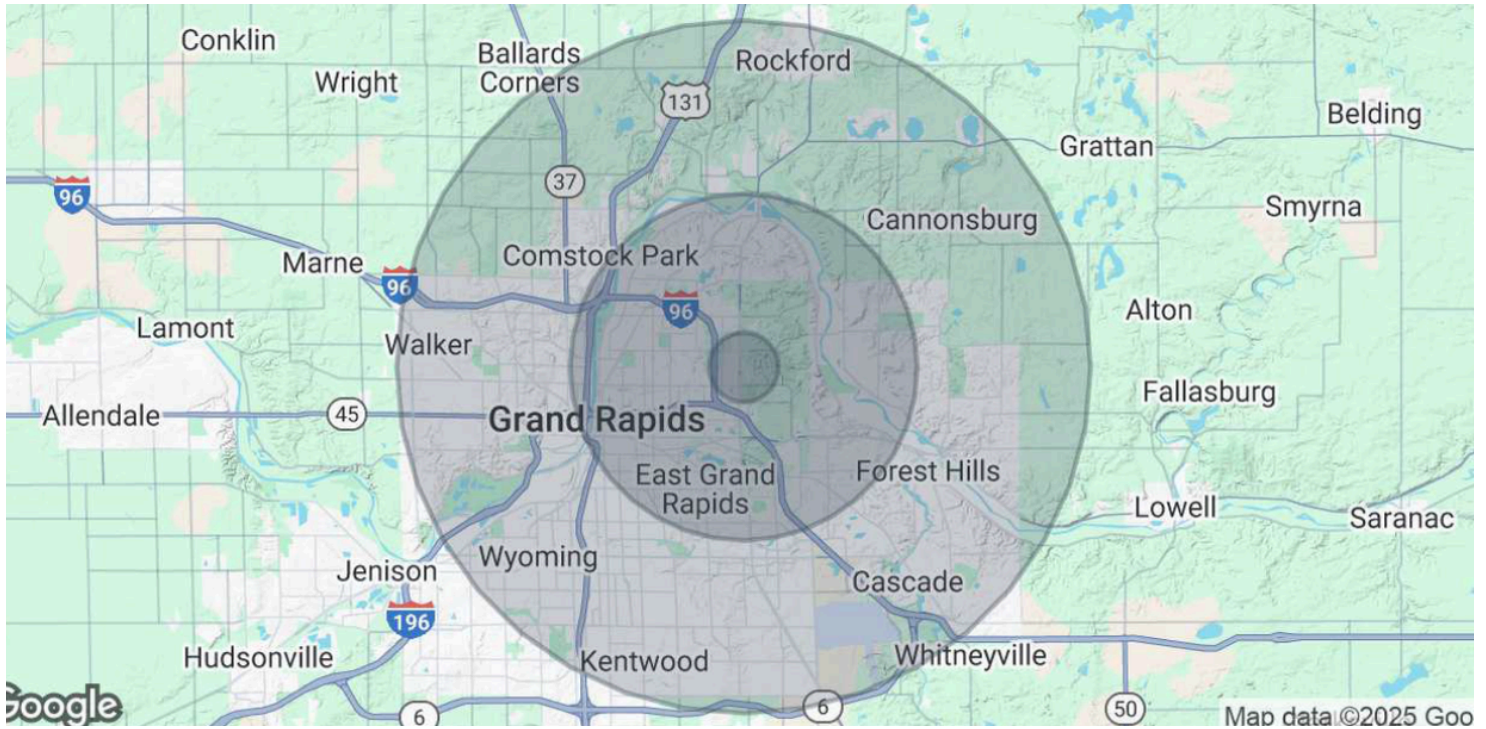
Retailer Map

1600 East Beltline Ave. NE, Grand Rapids, MI 49525



Demographics

1600 East Beltline Ave. NE, Grand Rapids, MI 49525



Demographics

	1 Miles	5 Miles	10 Miles
Total Population	3,411	45,093	171,697
Average Age	39.7	41	36.7
Average Age (Male)	30.8	34.4	32.7
Average Age (Female)	37.6	36.1	34.4
Total Households	1,111	17,122	67,491
# of Persons per HH	2.81	2.47	2.44
Average HH Income	\$172,514	\$101,945	\$91,095
Average House Value	\$361,467	\$193,097	\$171,357