

FOR SUBLEASE

CONTACT BROKERS FOR PRICING

# 220 Ranger Point Court

Columbia, SC 29209



**Shop Grove  
Industrial  
Park**

# PROPERTY FEATURES

## FLOORPLAN



<b>Building Size:</b>	±217,000 SF
<b>Space Available:</b>	±22,960 SF
<b>Clear Height:</b>	32'
<b>Loading:</b>	1 oversized drive-in door
<b>Parking:</b>	77
<b>Year Built:</b>	2024
<b>Bay Size:</b>	82'W by 280' deep
<b>Building Depth:</b>	280 feet
<b>Class:</b>	A
<b>Sprinkler:</b>	ESFR Sprinkler System
<b>Lighting:</b>	Motion activated LED Lights
<b>Use:</b>	Great Dead Storage use
<b>Term:</b>	9+ years remaining (will consider shorter term)

# LOCATION OVERVIEW

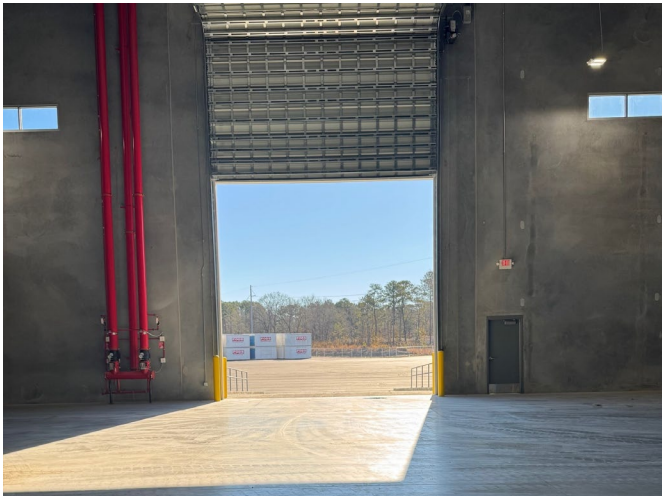




## CONTACT

PHILIP VANN, CCIM  
Director  
+1 803 306 5790  
philip.vann@cushwake.com

HUNTER WHITE  
Senior Associate  
+1 803 386 8973  
hunter.white1@cushwake.com



©2024 Cushman & Wakefield. All rights reserved. The material in this presentation has been prepared solely for information purposes and is strictly confidential. Any disclosure, use, copying or circulation of this presentation (or the information contained within it) is strictly prohibited, unless you have obtained Cushman & Wakefield's prior written consent. The views expressed in this presentation are the views of the author and do not necessarily reflect the views of Cushman & Wakefield. Neither this presentation nor any part of it shall form the basis of, or be relied upon in connection with any offer, or act as an inducement to enter into any contract or commitment whatsoever. NO REPRESENTATION OR WARRANTY IS GIVEN, EXPRESS OR IMPLIED, AS TO THE ACCURACY OF THE INFORMATION CONTAINED WITHIN THIS PRESENTATION, AND CUSHMAN & WAKEFIELD IS UNDER NO OBLIGATION TO SUBSEQUENTLY CORRECT IT IN THE EVENT OF ERRORS.