

FOR SALE

0.46± AC INDUSTRIAL LOT

5817 I-10 Industrial Pkwy| Theodore



PROPERTY DESCRIPTION:

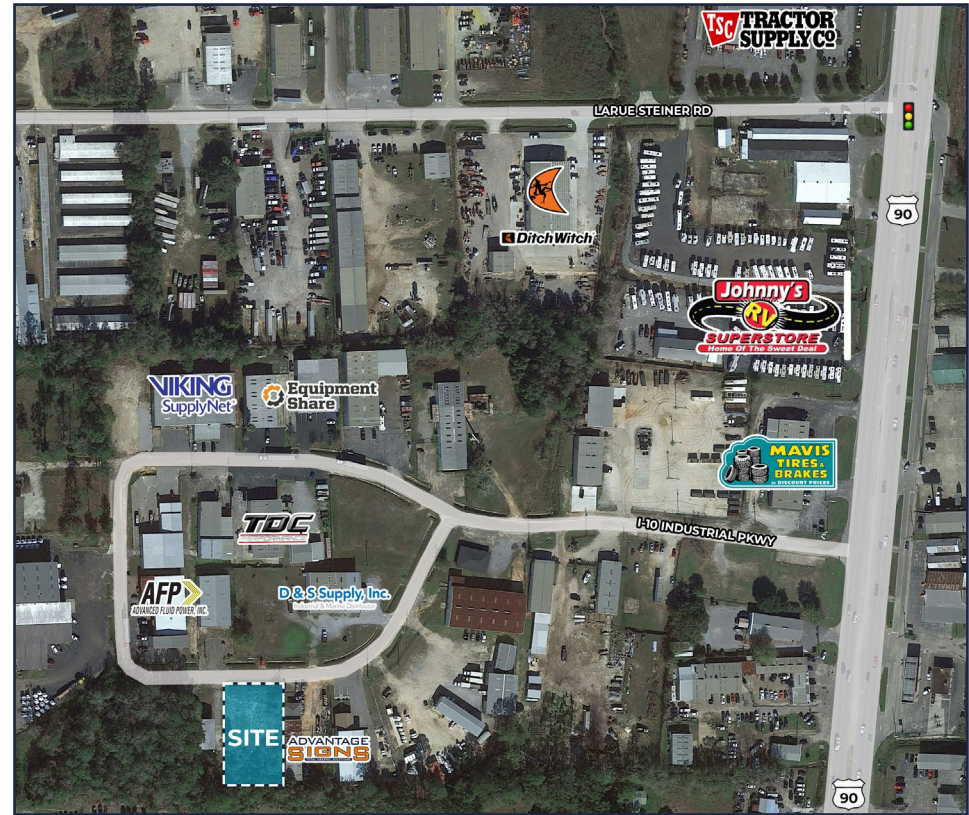
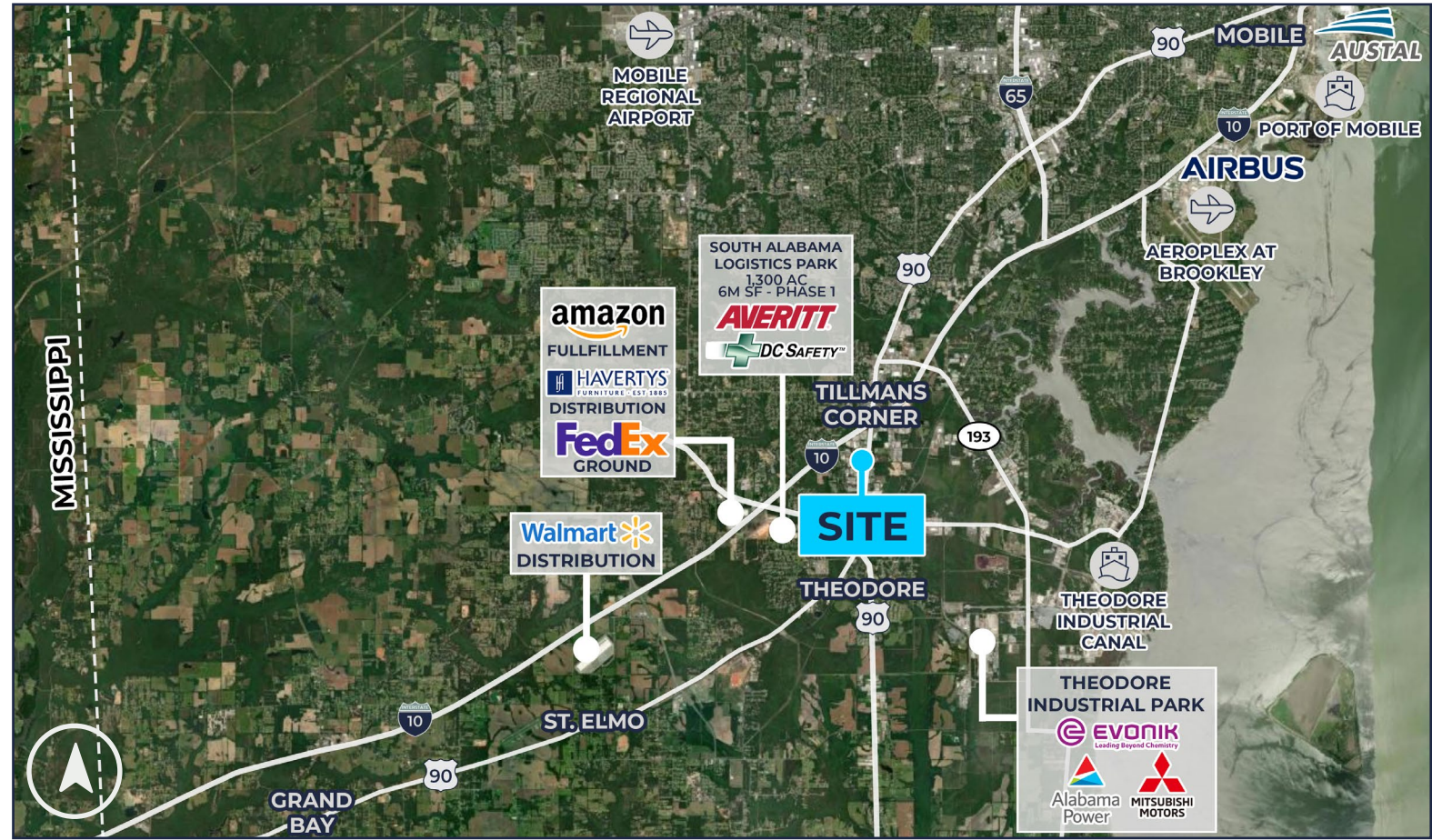
- 0.46± AC lot
- Zoned I-1: Light Industrial
- All utilities available to site
- Level and partially cleared
- Conveniently located less than two minutes from I-10 & only one exit from the 2M SF South Alabama Logistics Park with quick access to I-65 & AL Port
- Located in Tillman's Corner along the highly desired & booming I-10 corridor full of numerous industrial, showrooms, offices and more

SALE PRICE: \$79,000

Pete Riehm, SIOR
251.442.4349 | priehm@cre-mobile.com



**CRE
MOBILE**
CRE-MOBILE.COM



DISTANCES TO NOTABLE LOCATIONS

| | |
|------------------------|--------------|
| I-10 | 0.9 miles ± |
| I-65 | 5.5 miles ± |
| Rangeline Rd | 2.5 miles ± |
| Aeroplex at Brookley | 8 miles ± |
| Port of Mobile | 13 miles ± |
| Mississippi State Line | 13.5 miles ± |

Distance measured as the crow flies

NO WARRANTY OR REPRESENTATION, EXPRESS OR IMPLIED, IS MADE AS TO THE ACCURACY OF THE INFORMATION CONTAINED HEREIN, AND THE SAME IS SUBMITTED SUBJECT TO ERRORS, OMISSIONS, CHANGE OF PRICE, RENTAL OR OTHER CONDITIONS, PRIOR SALE, LEASE OR FINANCING, OR WITHDRAWAL WITHOUT NOTICE, AND OF ANY SPECIAL LISTING CONDITIONS IMPOSED BY OUR PRINCIPALS. NO WARRANTIES OR REPRESENTATIONS ARE MADE AS TO THE CONDITION OF THE PROPERTY NOR ANY HAZARDS CONTAINED THEREIN ARE ANY TO BE IMPLIED.

