

FOR SUBLEASE

9785 South Monroe Street
Sandy, UT



Property Highlights

- 20,877 SF available (can be demised)
- \$19.00 Full Service
- 12/31/2023 LED
- Plug-N-Play with Furniture Available
- Close to I-15, Hale Centre Theatre, and food/retail amenities



Contact

JESSE MANGUM
Managing Director
+1 801 303 5547
jesse.mangum@cushwake.com

JT REDD
Senior Associate
+1 801 303 5569
jt.redd@cushwake.com

DANA BAIRD, CCIM
Executive Managing Director
+1 801 303 5526
dana.baird@cushwake.com



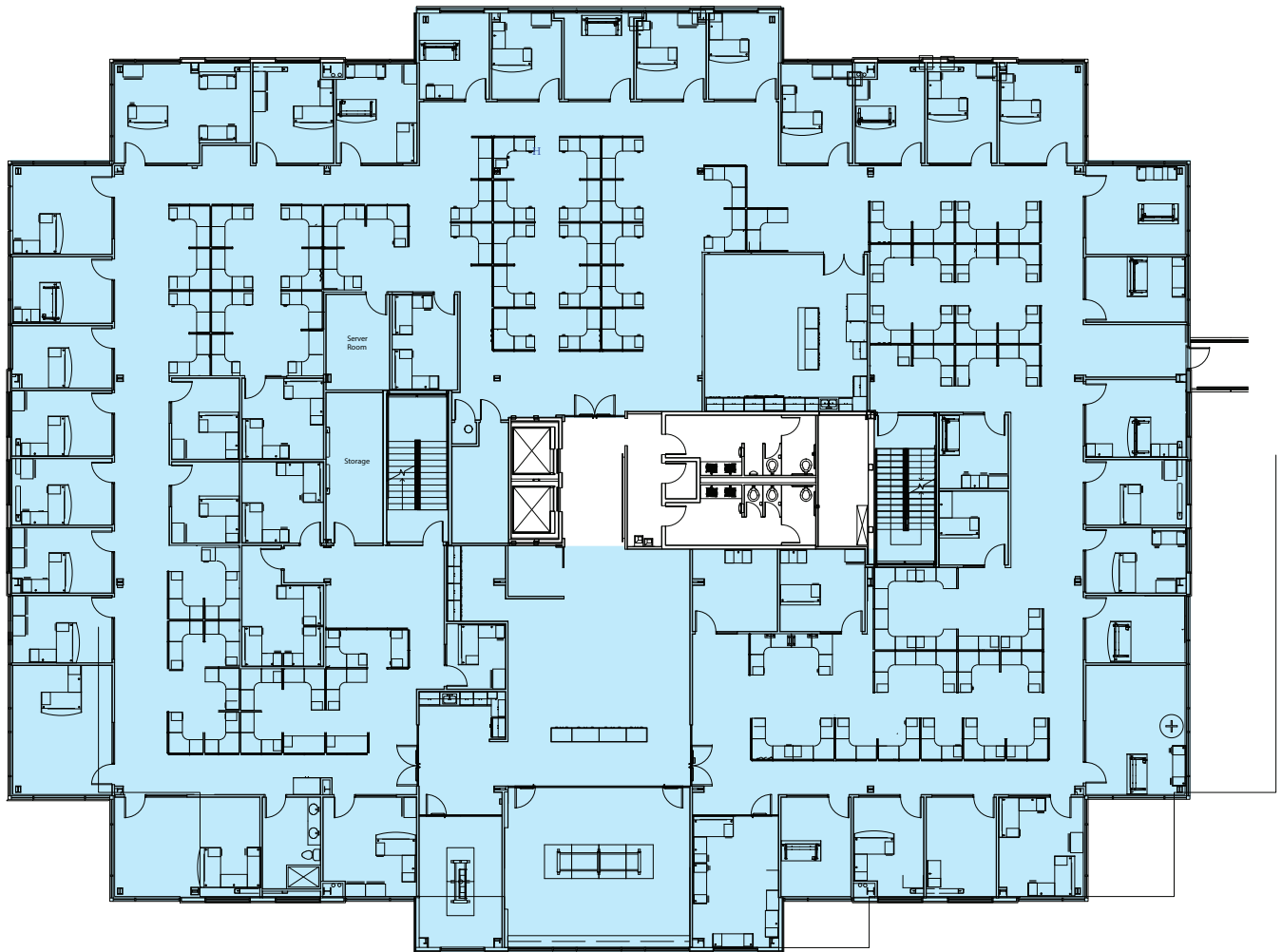
Contact

JESSE MANGUM
Managing Director
+1 801 303 5547
jesse.mangum@cushwake.com

JT REDD
Senior Associate
+1 801 303 5569
jt.redd@cushwake.com

DANA BAIRD, CCIM
Executive Managing Director
+1 801 303 5526
dana.baird@cushwake.com

Second Floor
20,877 RSF

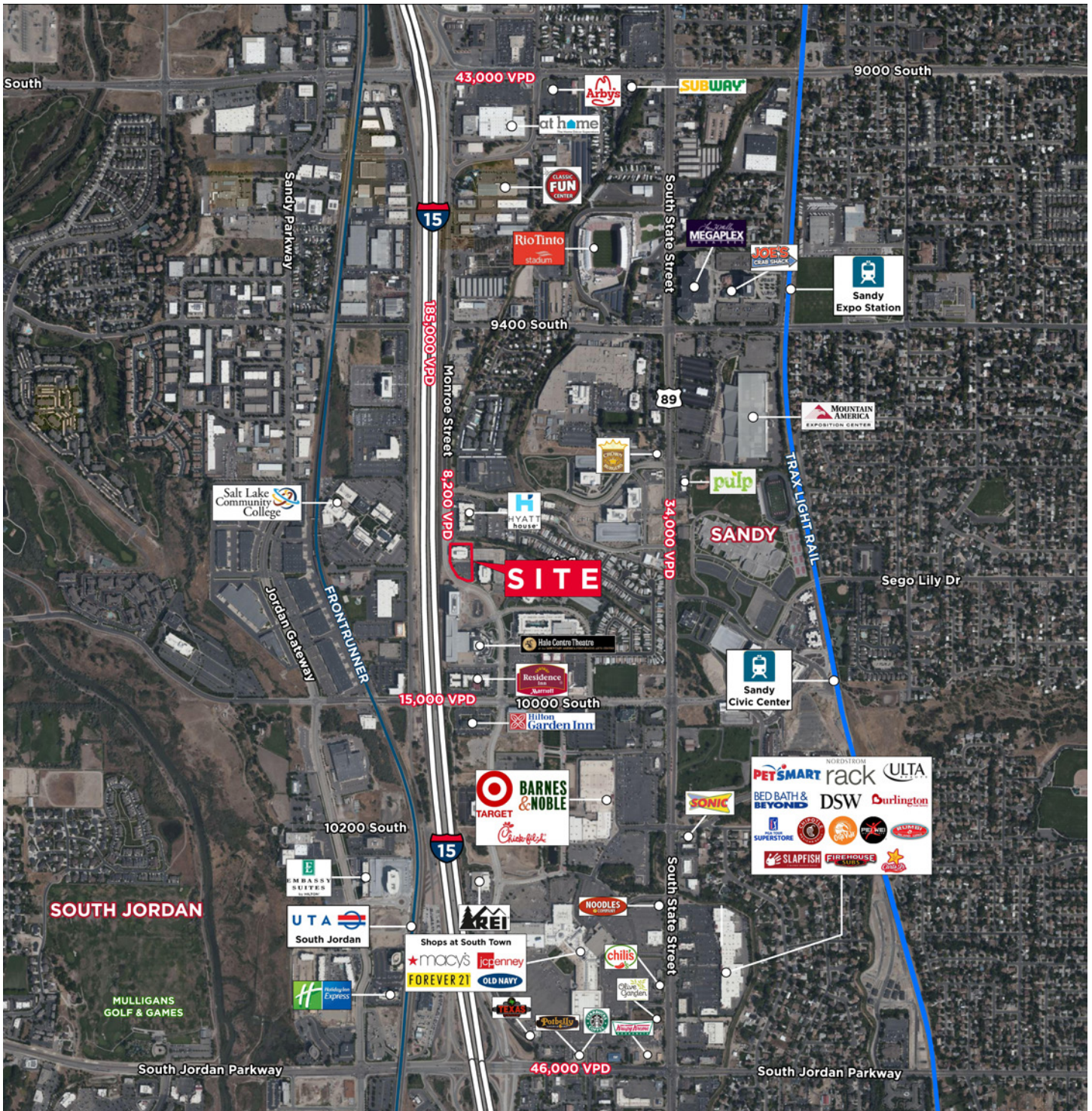


Contact

JESSE MANGUM
Managing Director
+1 801 303 5547
jesse.mangum@cushwake.com

JT REDD
Senior Associate
+1 801 303 5569
jt.redd@cushwake.com

DANA BAIRD, CCIM
Executive Managing Director
+1 801 303 5526
dana.baird@cushwake.com



Contact

JESSE MANGUM
 Managing Director
 +1 801 303 5547
 jesse.mangum@cushwake.com

JT REDD
 Senior Associate
 +1 801 303 5569
 jt.redd@cushwake.com

DANA BAIRD, CCIM
 Executive Managing Director
 +1 801 303 5526
 dana.baird@cushwake.com