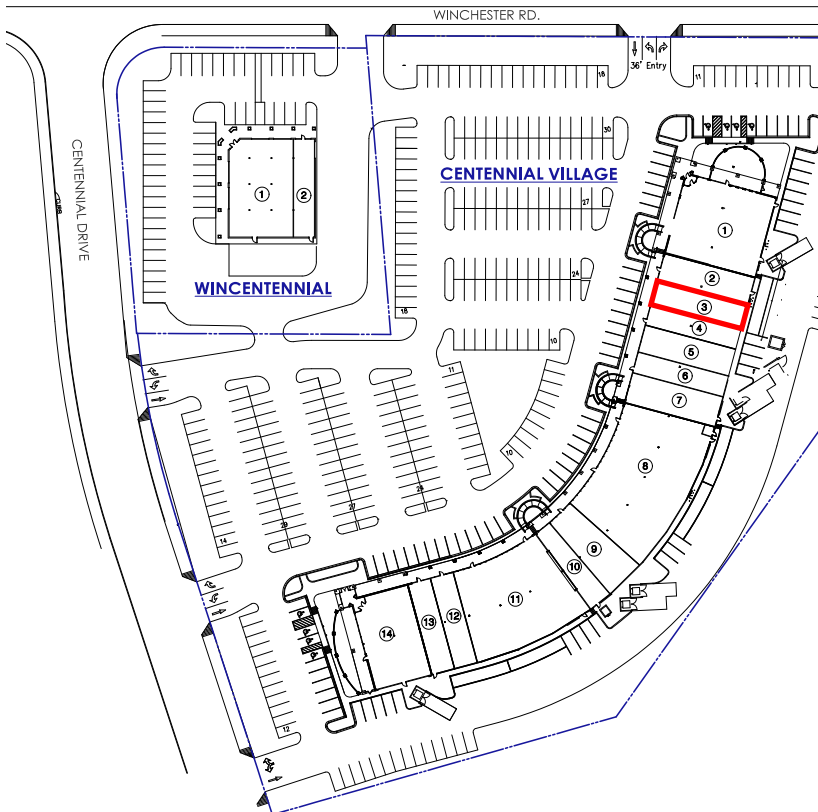


**RETAIL SPACE  
AVAILABLE**

# Centennial Village

7825 Winchester Rd  
Memphis, TN 38125



WINCENTENNIAL: 7801 WINCHESTER			
Key	Suite	Tenant	Area (SF)
1	101	FedEx Kinkos	4,640
2	102	Jimmy Johns	1,582

WINCENTENNIAL: 7801 WINCHESTER			
Key	Suite	Tenant	Area (SF)
1	122	Half Shell	5,600
2	121	Subway	2,000
3	120	<b>AVAILABLE</b>	<b>1,600</b>
4	119	Mid South Vapors	1,440
5	117	MyEyeDr	1,903
6	116	T-Nails	1,440
7	115	Centennial Dental	2,000
8	114	Party Works	9,200
9	109	One Main Financial	2,272
10	108	Parker's Water Ice	1,528
11	106	Rainbow	7,370
12	103	Rayford's Hot Wings	1,600
13	102	Kingdom Kids Hair Palace	1,600
14	101	HUEY'S	4,120
<b>TOTAL AREA:</b>			<b>43,673</b>

Michael Lightman Jr.  
901-409-0131  
michaeljr@lightmanrealty.com

Debra Owings  
901-581-7799  
dowings@rmsco.net

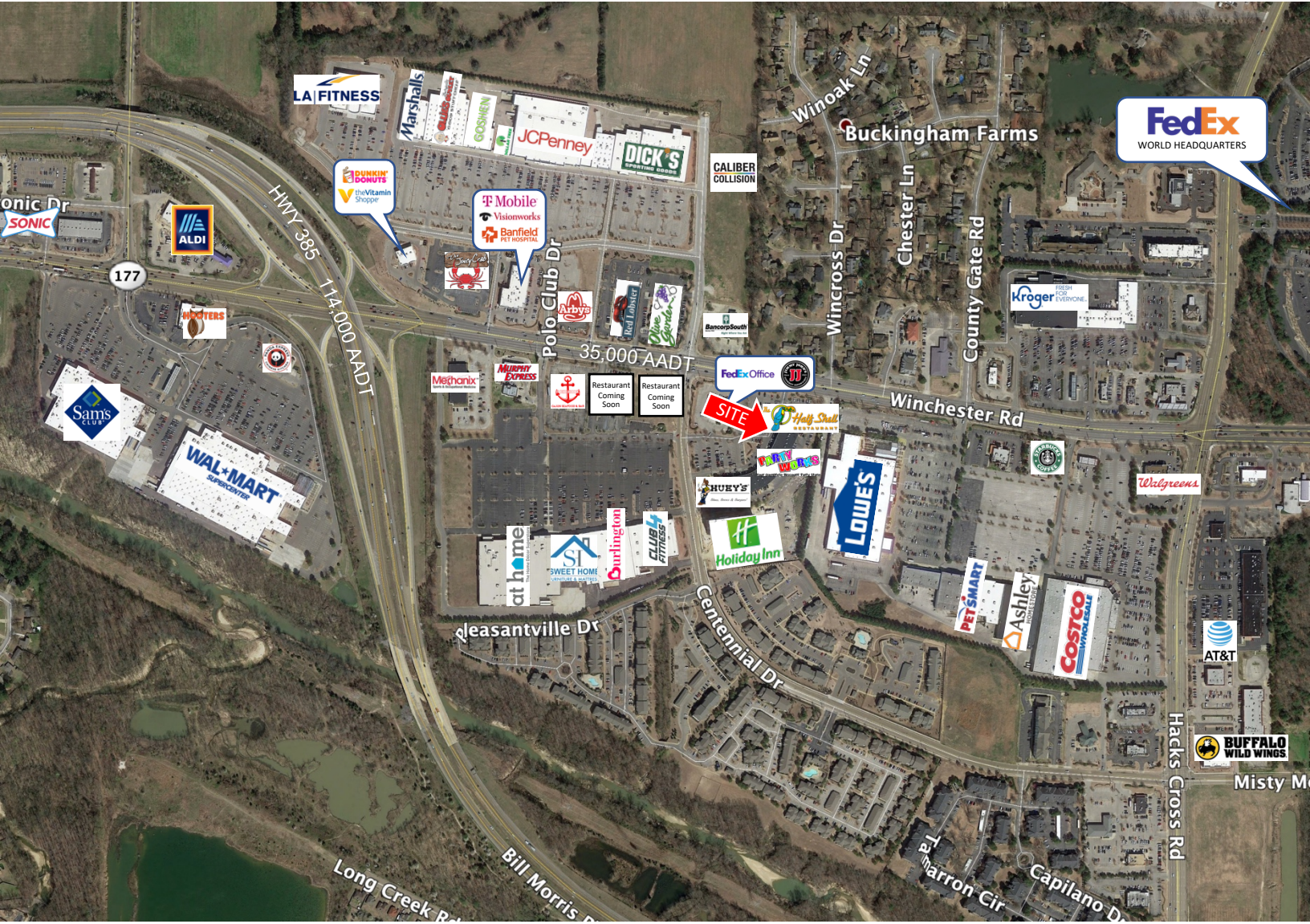
Adam Lightman  
901-550-6165  
adam@lightmanrealty.com



**RETAIL SPACE  
AVAILABLE**

# Centennial Village

7825 Winchester Rd  
Memphis, TN 38125



	3 MILES	5 MILES	10 MILES
Population	88,570	183,538	513,256
Daytime Population	74,004	194,545	568,573
Households	34,235	70,204	194,508
Average HH Income	\$81,553	\$90,307	\$89,751

Agents:

Michael Lightman Jr.  
901-409-0131  
michaeljr@lightmanrealty.com

Debra Owings  
901-581-7799  
dowings@rmsco.net

Adam Lightman  
901-550-6165  
adam@lightmanrealty.com



No warranty expressed or implied has been made as to the accuracy of this information, no liability assumed for errors or omissions.