

LINDON END CAP WAREHOUSE FOR LEASE

122 NORTH 1800 WEST, LINDON, UTAH 84042

RATE REDUCTION!



PROPERTY INFORMATION

- UNIT 10: 5,049 SF END CAP WAREHOUSE
2,849 SF OFFICE SPACE
2,200 SF WAREHOUSE SPACE
- INCLUDES: (5) OFFICES, (1) SHOWROOM
AND (2) RESTROOMS
- (1) 12' X 12' GL DOOR
- 16' CLEARANCE HEIGHT

- 3 PHASE | 480 VOLTS | 200 AMPS
- LIGHT INDUSTRIAL ZONING
- FIRE SPRINKLED
- BUILT IN 2005
- HARDWOOD FLOORING IN OFFICE AREA
- EASY ACCESS TO I-15

LEASE RATE REDUCED : from ~~\$0.95/SF~~ to \$0.75/SF MONTH NNN

CONTACT

801.617.1700

WEST HARADIN

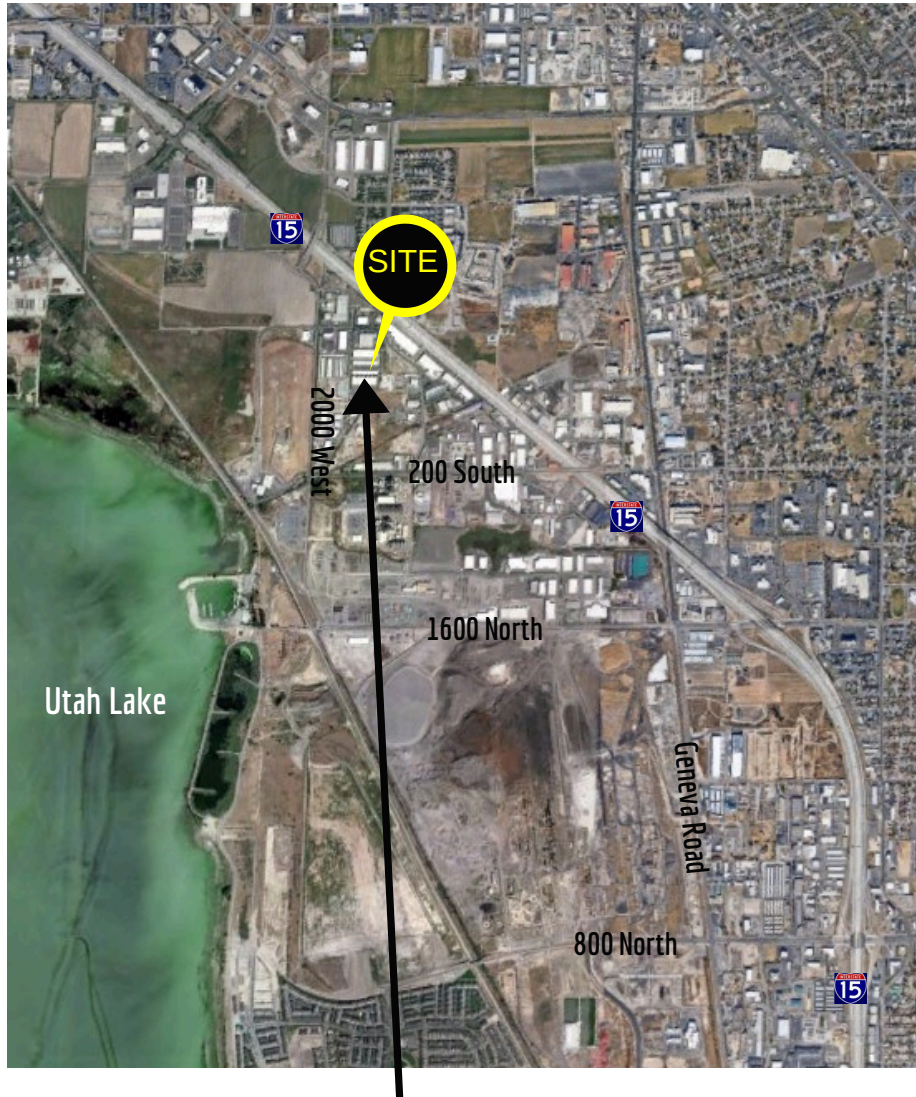
west.haradin@crcnationwide.com

CRYSTAL JOHNSON

crystal.johnson@crcnationwide.com

LINDON END CAP WAREHOUSE FOR LEASE

122 NORTH 1800 WEST, LINDON, UTAH 84042



This information is given with the understanding that all negotiations and/or real estate activity related to the property described above shall be conducted through this cRc Nationwide office. The above information while not guaranteed, was obtained from sources we believe to be reliable.

CONTACT
801.617.1700

WEST HARADIN
west.haradin@crcnationwide.com

CRYSTAL JOHNSON
crystal.johnson@crcnationwide.com