



For Lease

Central Square

10830 N Central Expy, Dallas TX 75231

Central Square
10830 N Central Expy
Dallas, TX 75231



Boutique Office Spaces Dallas, TX

Located in the heart of Dallas, Central Square is a Class B office project located on N Central Expressway off Highway 75. The property offers convenience in location to the Park Cities, Preston Hollow and Lake Highland neighborhoods in addition to I-635 and Northwest Highway.

- Renovations on lobby and common areas
- Reserved covered parking
- On-site security
- Highway 75 accessibility and visibility
- 2 Miles from NorthPark Mall
- 1 mile from Walnut Hill Dart Station

**Get more
information**

Lindsay Wolcott Brown
214.538.6224
Lindsay.Wolcott@FoundryCommercial.com



79,983 SF
4-story building



26,832 RSF
Available space



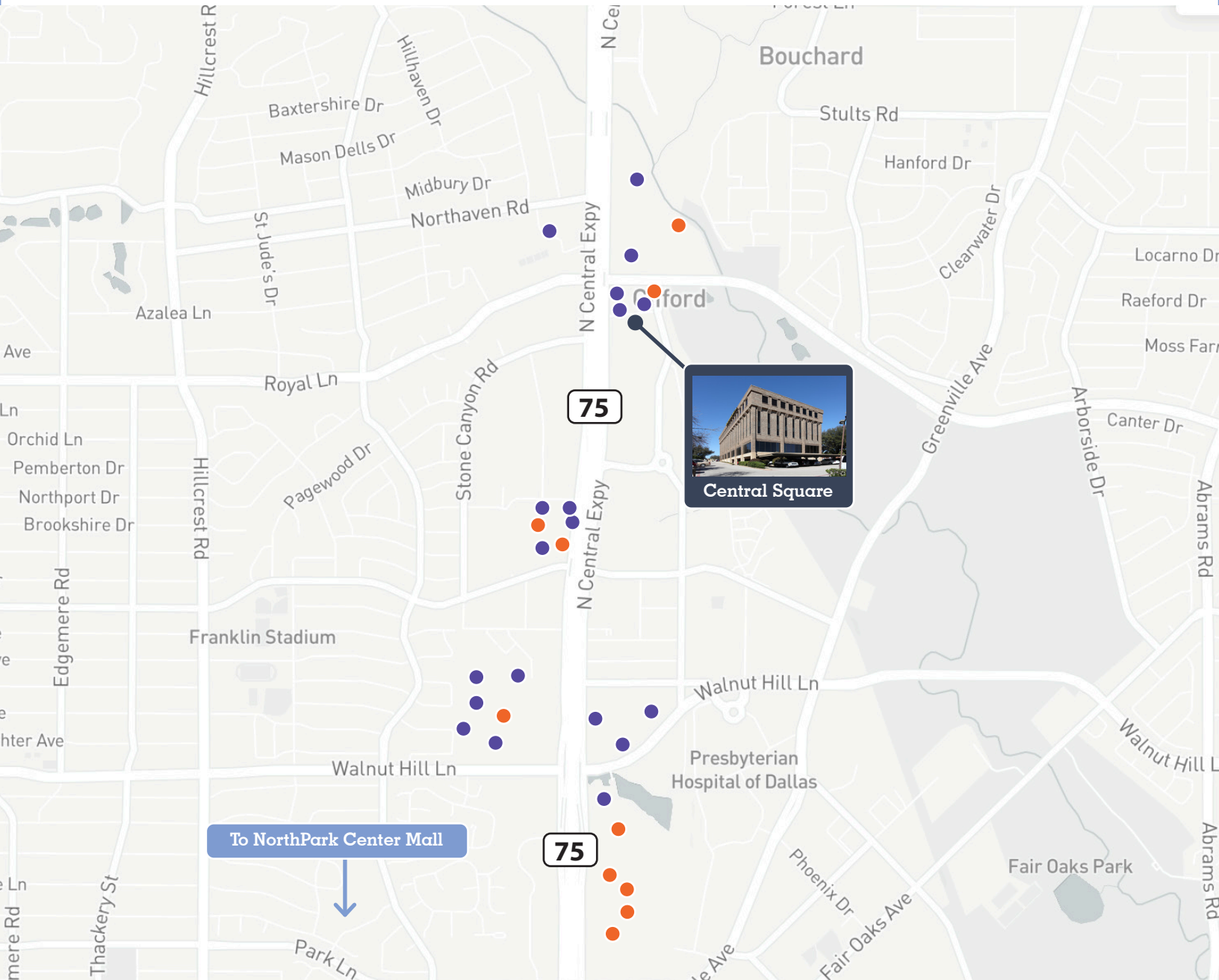
Built in 1971
Renovated in 2018



Parking
Up to 3.00/1,000 SF

Area amenities

10830 N Central Expy



30+
restaurant
options
within 2 miles

25+
retail
options
within 2 miles

1
mile from Walnut Hill
DART Station

5
minutes to
Northpark Mall

Gallery

10830 N Central Expy

