

Design
Interior
Engineering

2100 SATURN ST., STE. 305
MONTEREY PARK, CA 91755
V. 323.888.9080
F. 323.888.2080
info@limahicons.com

REVISIONS

1 BUILDING PLAN CHECK

2 BUILDING PLAN CHECK

SUBMITTAL

02.04.07 PLANNING REVIEW

04.25.07 BUILDING RESUBMITTAL

05.18.08 BUILDING RESUBMITTAL



VICENTE R. HIZON
PRINCIPAL ARCHITECT

HUNTINGTON
FOOD COURT
737 E. HUNTINGTON DRIVE
MONROVIA, CA

ISSUED FOR
BID SET

NOT FOR CONSTRUCTION

DATE ISSUED: MAY 30, 2008

SHEET CONTENTS

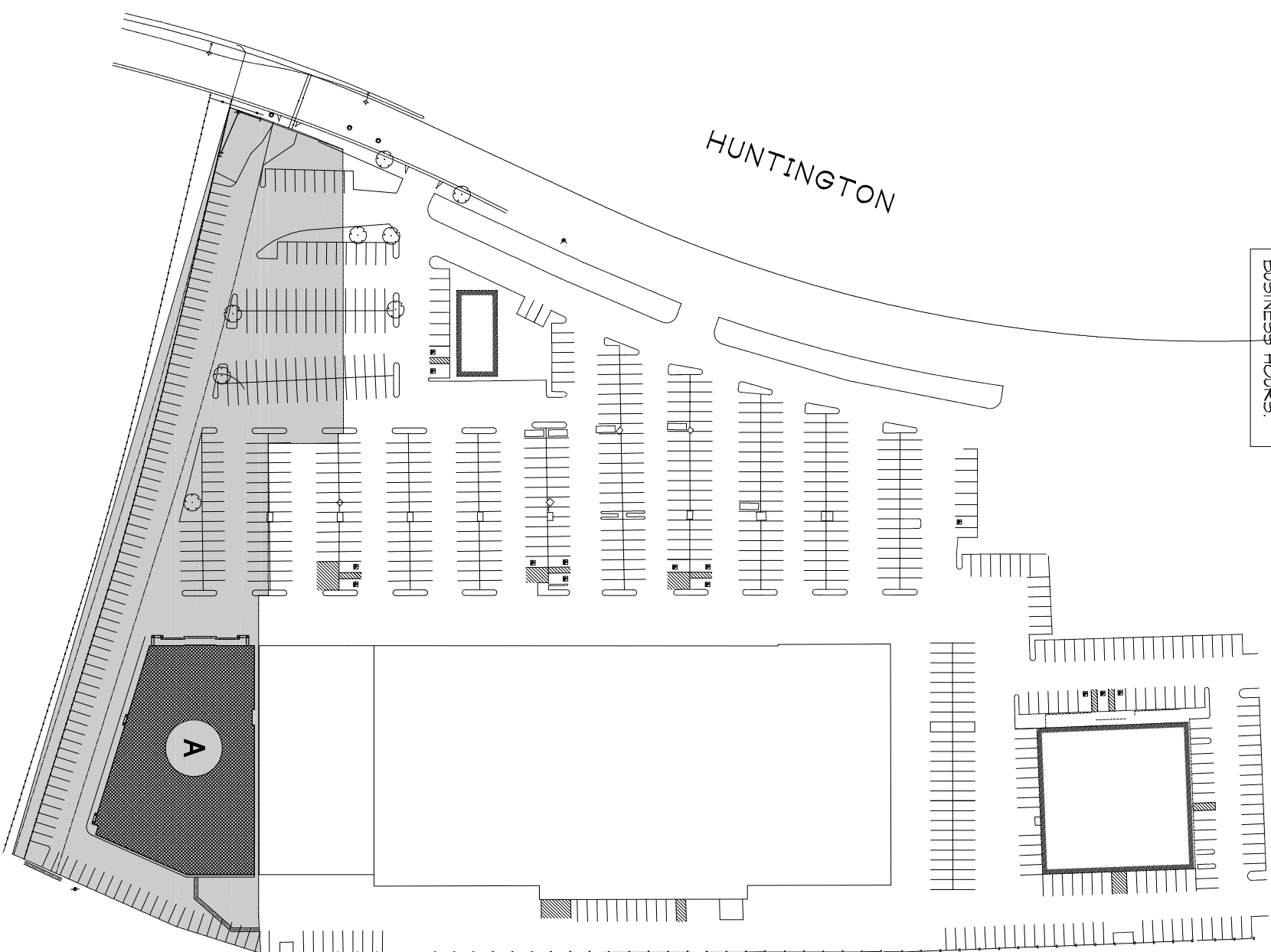
SITE PLAN
PARKING CALCULATION

DATE 05.30.08
SCALE AS SHOWN
DRAWN BY ABG/LH
DATE PLOT 05.17.08
PROJECT NO. L006-004

SHEET NUMBER

A1.2

THESE DRAWINGS AND THE ACCOMPANYING SPECIFICATIONS ARE THE PROPERTY OF LIMA HIZON LUZANO ARCHITECTS. IF ANY PART IS REPRODUCED, COPIED, AND/OR OWNERS IN ANY MANNER OR WHOSE NAME IS USED, WITHOUT THE WRITTEN CONSENT FROM LIMA HIZON LUZANO ARCHITECTS.



SHAWROCK

NOTE: ENCLOSURE
TO BE LOCKED AFTER
BUSINESS HOURS.

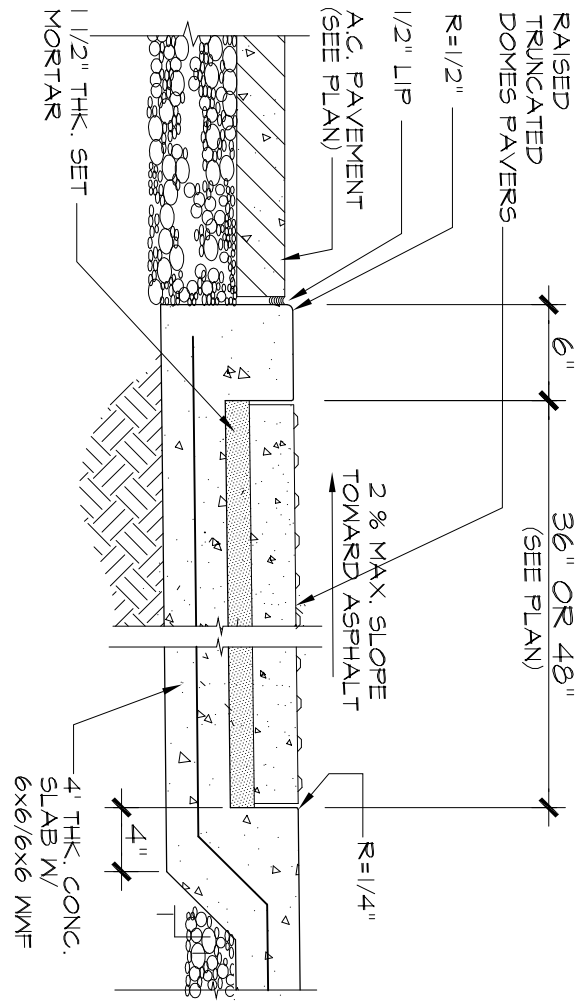
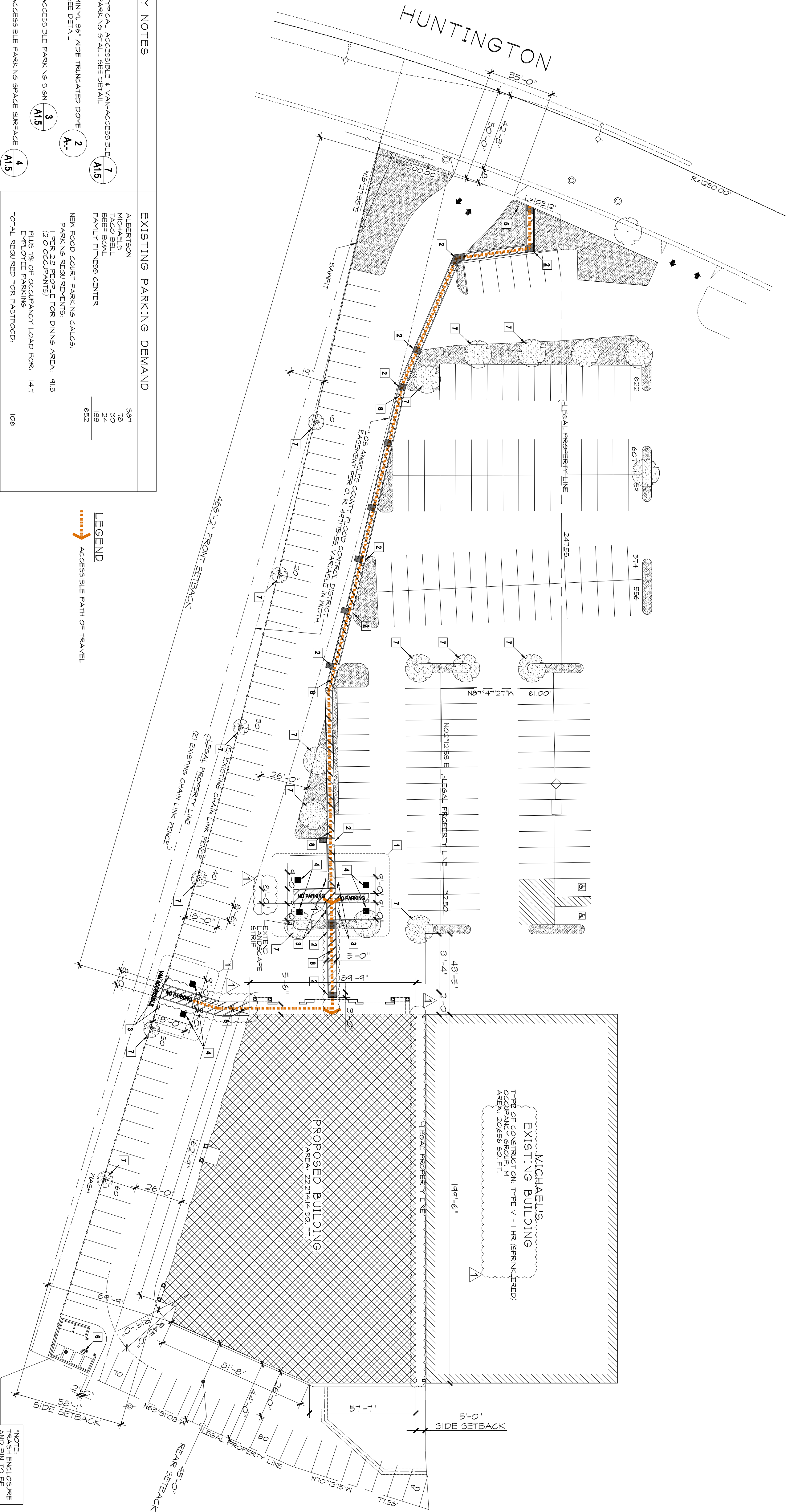


NORTH

LEGEND
ACCESSIBLE PATH OF TRAVEL

KEY NOTES	EXISTING PARKING DEMAND
1 TYPICAL ACCESSIBLE & VAN-ACCESSIBLE PARKING STALL SEE DETAIL	397 MICHAEL'S TACO BELL BEER BOYL FAMILY FITNESS CENTER 482
2 MINIMUM 36" WIDE TRUNCATED DOME SEE DETAIL	
3 ACCESSIBLE PARKING SIGN	
4 ACCESSIBLE PARKING SPACE SURFACE	
5 PARKING LOT ENTRY SIGN	
6 TRASH ENCLOSURE SEE DETAIL	
7 (N) TREE SEE LANDSCAPE PLANS	
8 PATH OF TRAVEL	

EXISTING PARKING NEW PARKING PROVIDED	671 91
TOTAL NUMBER OF PARKING ON SITE	761
NEW OVERALL PARKING REQUIRED (SURPLUS PARKING)	359
TOTAL REQUIRED FOR FOODCOURT NEW DISABLED PARKING (FOR FOODCOURT)	106 6 (4 VAN ACC)
TOTAL EXISTING DISABLED PARKING (SEE A.2A)	10



- NOTES:
- GROUP ALL PAVEMENT JOINTS.
 - RAISED TRUNCATED DOME PAVERS SHALL BE 12" x 12" x 3/4" W/FR. BY MAUSAU TILE MODEL # ADA-2857008 TEL. (800) 388-8128

SCALE

1" = 10'-0"

2

SITE PLAN

SCALE

1" = 50'-0"

1