

1625

THE ALAMEDA

SAN JOSE, CA 95126

± 4,486 RSF

EXCLUSIVE GROUND FLOOR
SPACE WITH PREMIUM
SIGNAGE

ADDITIONAL OFFICE SUITES AVAILABLE



Kevin Heravi

📞 408-457-8800

✉ kevin@healthmedrealty.com

📄 Lic. 01875398

Jeff Petulla

📞 408-888-4859

✉ jeff@healthmedrealty.com

📄 Lic. 00852399

260 Los Gatos-Saratoga Rd.

Los Gatos, CA 95030 Lic.

01902032 | 408.217.6000

www.healthmedrealty.com

PROPERTY SUMMARY

Located at **1625 The Alameda** in San Jose, this premier high-rise building offers an unparalleled opportunity to lease the entire ground floor, totaling 4,486 square feet, with additional suites available on the upper-floors. Known for its notable tenants and prime location, the building features ample on-site parking, high-end finishes, and unrivaled signage, making it a sought- after address for businesses.

SIGNAGE OPPORTUNITIES

The ground floor space offers exceptional signage opportunities, including a **monument sign**, **building entrance sign**, and a highly visible **eyebrow sign**, making it ideal for businesses seeking high visibility and brand exposure. Previously occupied by First Republic Bank, the ground floor space is designed to accommodate a variety of business needs.

LOCATION HIGHLIGHTS

The strategic location offers easy access to key San Jose destinations, including Downtown San Jose and the SAP Center. The property is conveniently located near major highways and public transportation, providing seamless connectivity to the broader Silicon Valley area. Additionally, the surrounding area boasts a variety of dining and entertainment options, further enhancing the appeal of this prime leasing opportunity.



AVAILABLE SPACE - GROUND FLOOR

- Suite 100: \pm 2,386 RSF
- Suite 102: \pm 2,100 RSF
- Total Available Space: \pm 4,486 RSF

LEASE RATE

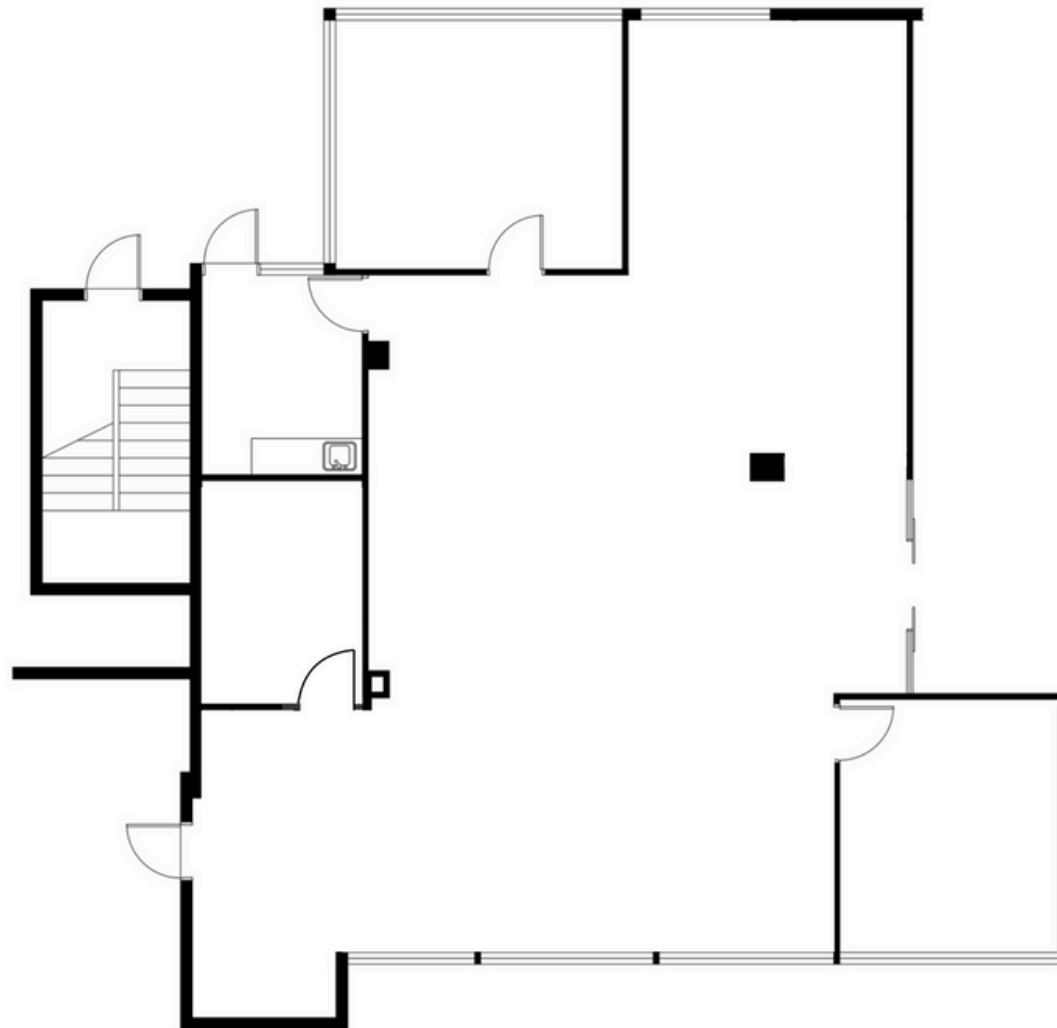
- \$3.50/RSF Gross + signage

SIGNAGE OPPORTUNITY

- Monument Sign
- Building Entrance Sign
- Building Eyebrow Sign

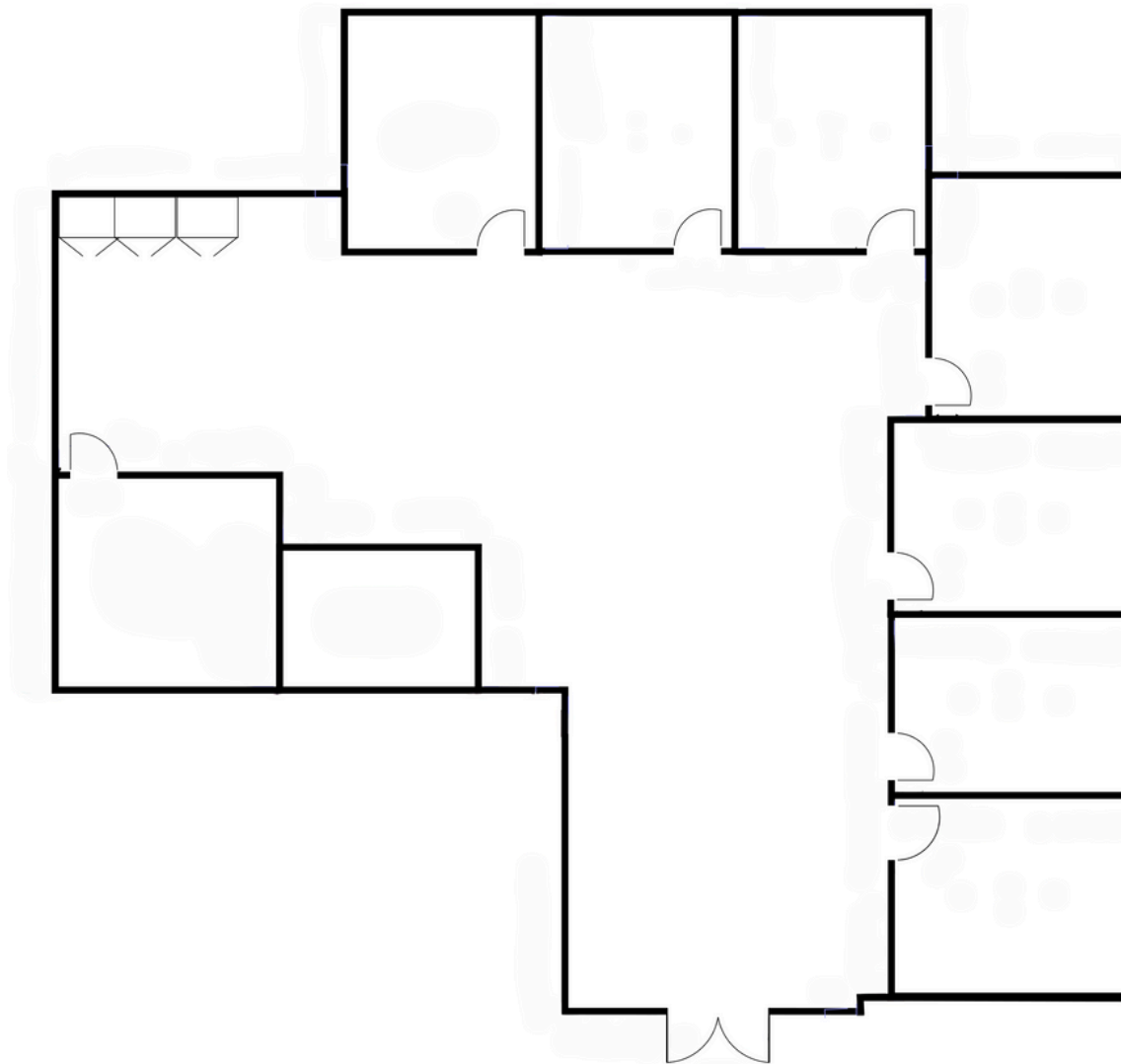


SUITE 100 - ± 2,386 RSF



DRAWINGS NOT TO SCALE

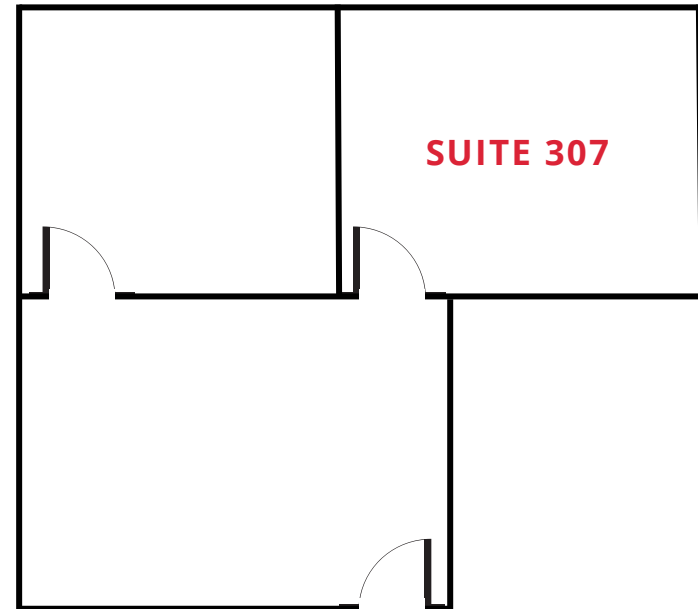
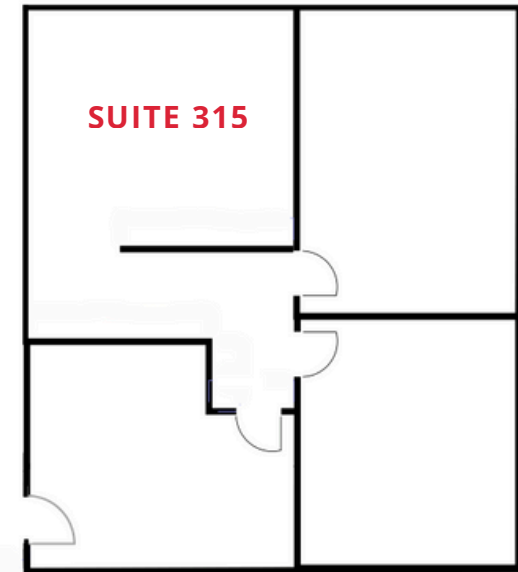
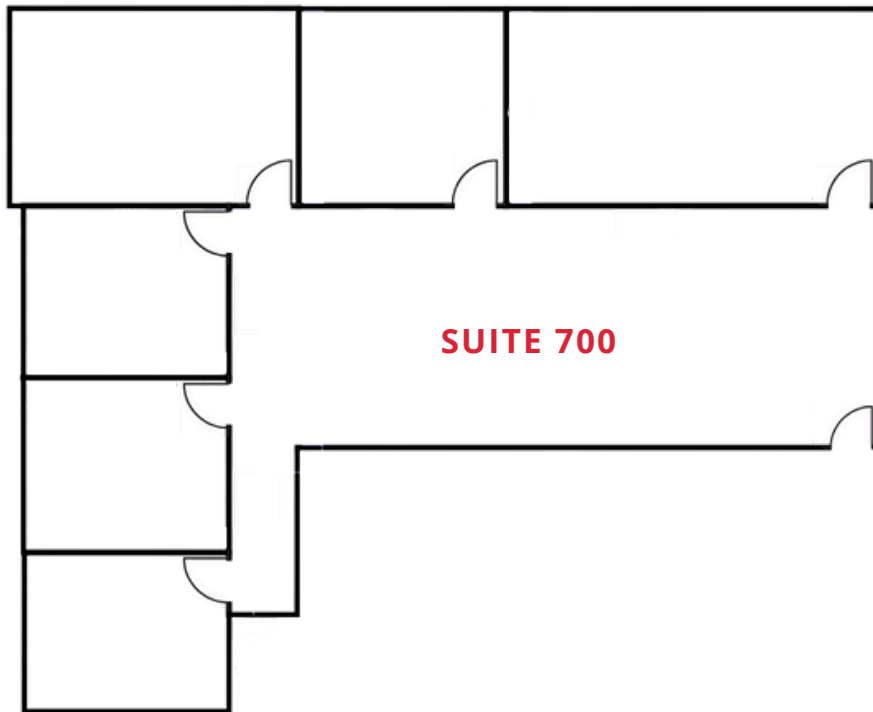
SUITE 102 - ± 2,100 RSF



DRAWINGS NOT TO SCALE

ADDITIONAL OFFICE SUITES AVAILABLE

- **Suite 203:** ± 300 RSF | \$1,300/Mo
- **Suite 307:** ± 600 RSF | \$3.00/RSF FS
- **Suite 315:** ± 1,005 RSF | \$3.00/RSF FS
- **Suite 700:** ± 1,540 RSF - Divisible to ± 750 RSF | \$3.25/SF FS
- **Suite 712:** ± 300 RSF | \$1,300/Mo



DRAWINGS NOT TO SCALE

PARKING

- Ample Onsite Parking
- Free of Charge
- Easy Access





HealthMedRealty

Kevin Heravi

☎ 408-457-8800

✉ kevin@healthmedrealty.com

📄 Lic. 01875398

Jeff Petulla

☎ 408-888-4859

✉ jeff@healthmedrealty.com

📄 Lic. 00852399

260 Los Gatos-Saratoga Rd.
Los Gatos, CA 95030
Lic. 01902032 | 408.217.6000

www.healthmedrealty.com



SCAN TO VIEW
PROPERTY VIDEO

1625

THE ALAMEDA

SAN JOSE, CA 95126

