

INTERSTATE OUTLOTS AVAILABLE

2201 W Southport Road - Indianapolis, IN 46217



MIDLAND ATLANTIC
PROPERTIES



PROPERTY OVERVIEW

Development Located at Southwest Corner of I-69 and Southport Road

PROPERTY HIGHLIGHTS

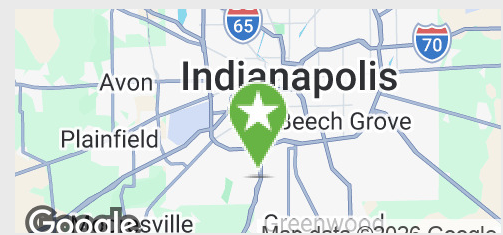
- 1.75 Acre 1st Tier Outlot For Lease
- I-69 Construction Complete
- Southport Road Extension West to SR 67 at Ameriplex Parkway Planned by Indianapolis/Marion County Thoroughfare Plan
- Additional Commercial Sites Available to the South at County Line Road Exit

DEMOGRAPHICS

	1 MILE	3 MILES
Total Population	11,341	46,834
Average HH Income	\$119,094	\$110,160
Businesses	304	1,250
Employees	1,764	9,193

TRAFFIC COUNTS

SR 37 / I-69	36,939
Southport Road	16,832



MIDLAND ATLANTIC PROPERTIES

Indianapolis Office
3801 East 82nd Street, Suite B
Indianapolis, IN 46240

MIDLANDATLANTIC.COM

PATRICK BOYLE

Direct: 317.597.1718
Cell: 317.679.6322
pjboyle@midlandatlantic.us

SHAWN HEFFERN

Direct: 317.597.1715
Cell: 317.695.8938
sheffern@midlandatlantic.us

DEVELOPMENT • BROKERAGE • ACQUISITIONS • MANAGEMENT

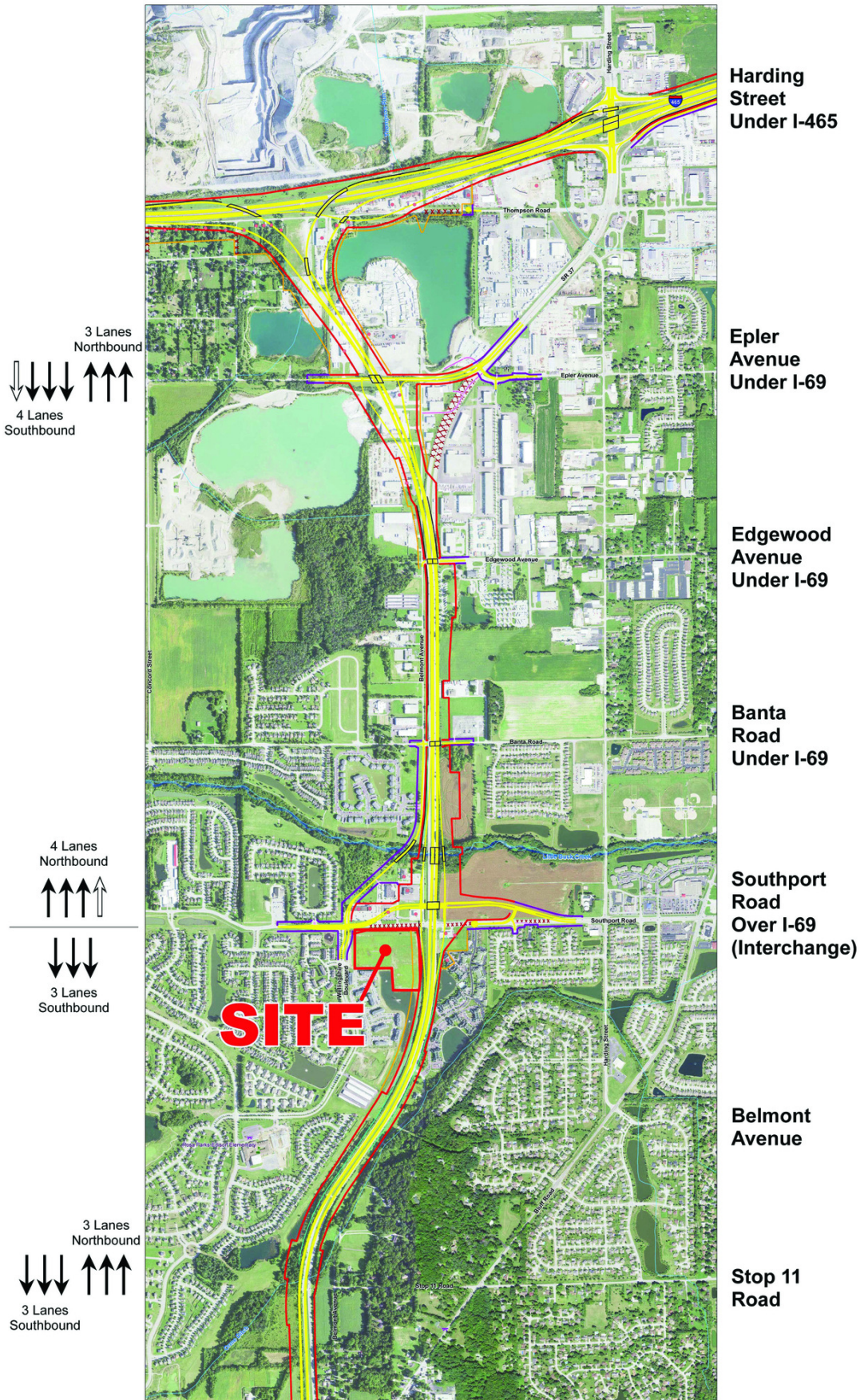
Information contained herein has been obtained from sources deemed reliable but is not guaranteed and is subject to change without notice.

INTERSTATE OUTLOTS AVAILABLE

2201 W Southport Road - Indianapolis, IN 46217



MIDLAND ATLANTIC
PROPERTIES



INTERSTATE OUTLOTS AVAILABLE

2201 W Southport Road - Indianapolis, IN 46217



MIDLAND ATLANTIC
PROPERTIES

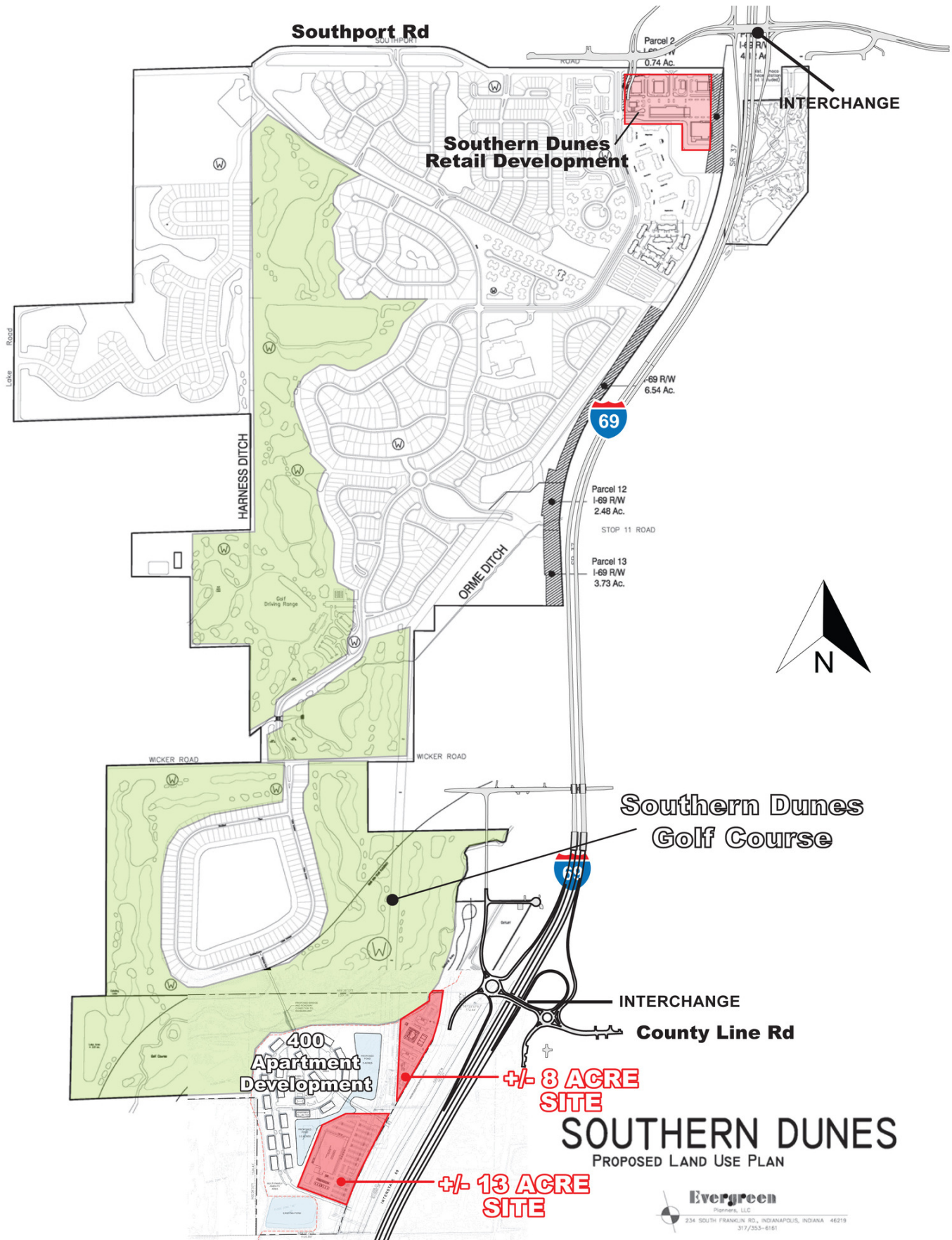


INTERSTATE OUTLOTS AVAILABLE

2201 W Southport Road - Indianapolis, IN 46217



MIDLAND ATLANTIC
PROPERTIES



INTERSTATE OUTLOTS AVAILABLE

2201 W Southport Road - Indianapolis, IN 46217



MIDLAND ATLANTIC
PROPERTIES

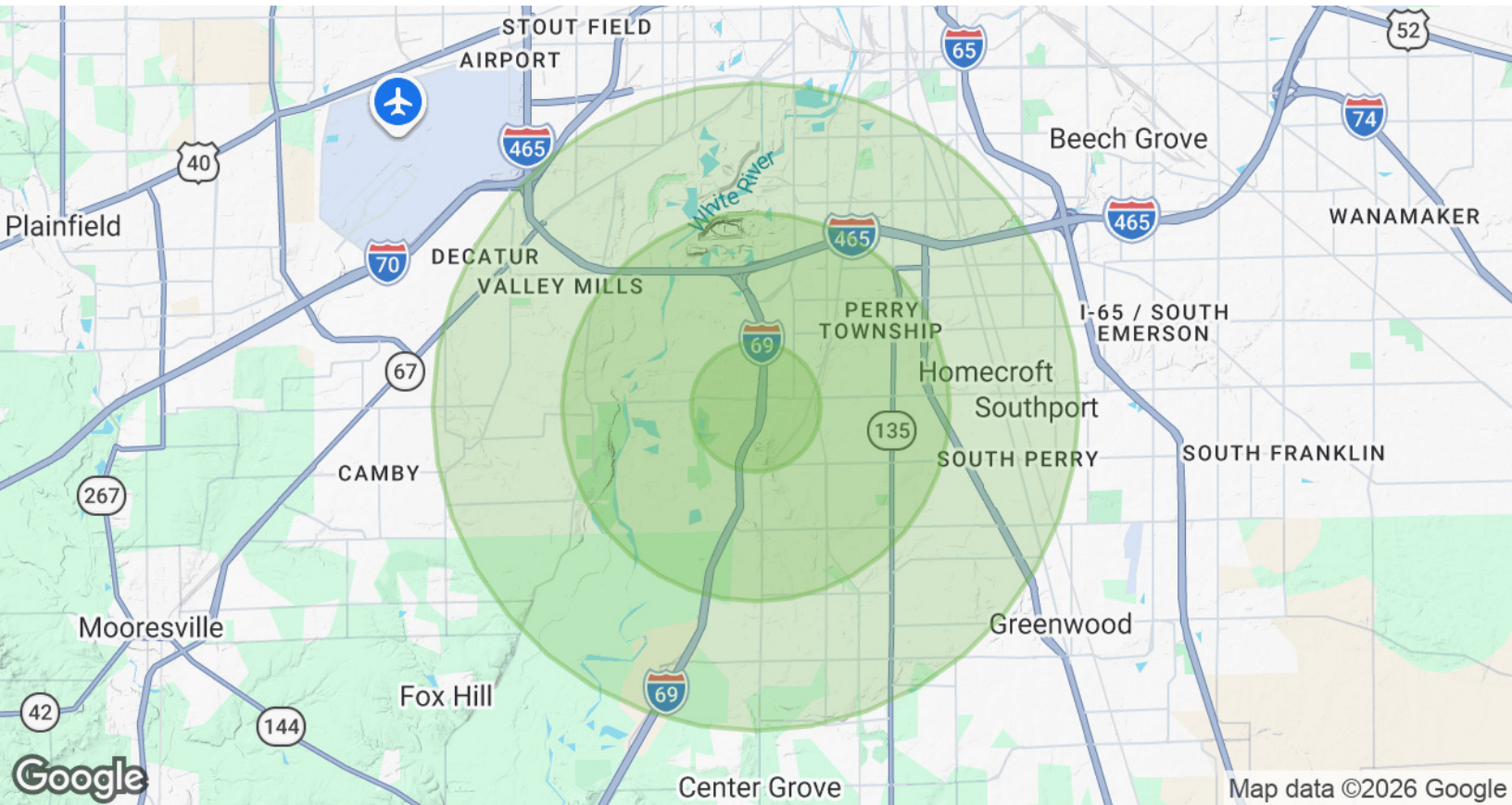


INTERSTATE OUTLOTS AVAILABLE

2201 W Southport Road - Indianapolis, IN 46217



MIDLAND ATLANTIC
PROPERTIES



POPULATION & HOUSING

	1 MILE	3 MILES	5 MILES
Total Population	11,341	46,834	152,462
Total Households	4,265	17,588	58,213
Median Home Value	\$255,889	\$258,150	\$245,892

INCOME & BUSINESS

	1 MILE	3 MILES	5 MILES
Average HH income	\$119,094	\$110,160	\$94,847
Daytime Population (16+ years)	3,702	20,030	80,373
Total Businesses	304	1,250	4,998
Total Employees	1,764	9,193	39,813

MIDLAND ATLANTIC PROPERTIES

Indianapolis Office
3801 East 82nd Street, Suite B
Indianapolis, IN 46240

MIDLANDATLANTIC.COM

PATRICK BOYLE

Direct: 317.597.1718
Cell: 317.679.6322
pjboyle@midlandatlantic.us

SHAWN HEFFERN

Direct: 317.597.1715
Cell: 317.695.8938
sheffern@midlandatlantic.us

DEVELOPMENT • BROKERAGE • ACQUISITIONS • MANAGEMENT

Information contained herein has been obtained from sources deemed reliable but is not guaranteed and is subject to change without notice.