

# 221 MAIN

Columbia  
Property Trust



Your Future **Starts Here**

[www.221main.com](http://www.221main.com)

# 221 MAIN



221 Main is a modern 16-story Class - A high rise in the premier South of Market location of the Spear Street corridor. The building features an unparalleled amenity package with an abundance of outdoor space and is LEED Platinum certified.

Large, open floor plates between 22,000 – 35,000 RSF offer a variety of space options for tenants. The continuous window line awards exceptional natural light with incredible views of the Bay. Private amenities include expansive roof terrace, conference center, tenant lounge, fitness center and ground floor retail.

Tenants at 221 Main have access to a secured bike storage, underground parking facility, building showers for exclusive tenant use and the best private deck in San Francisco!

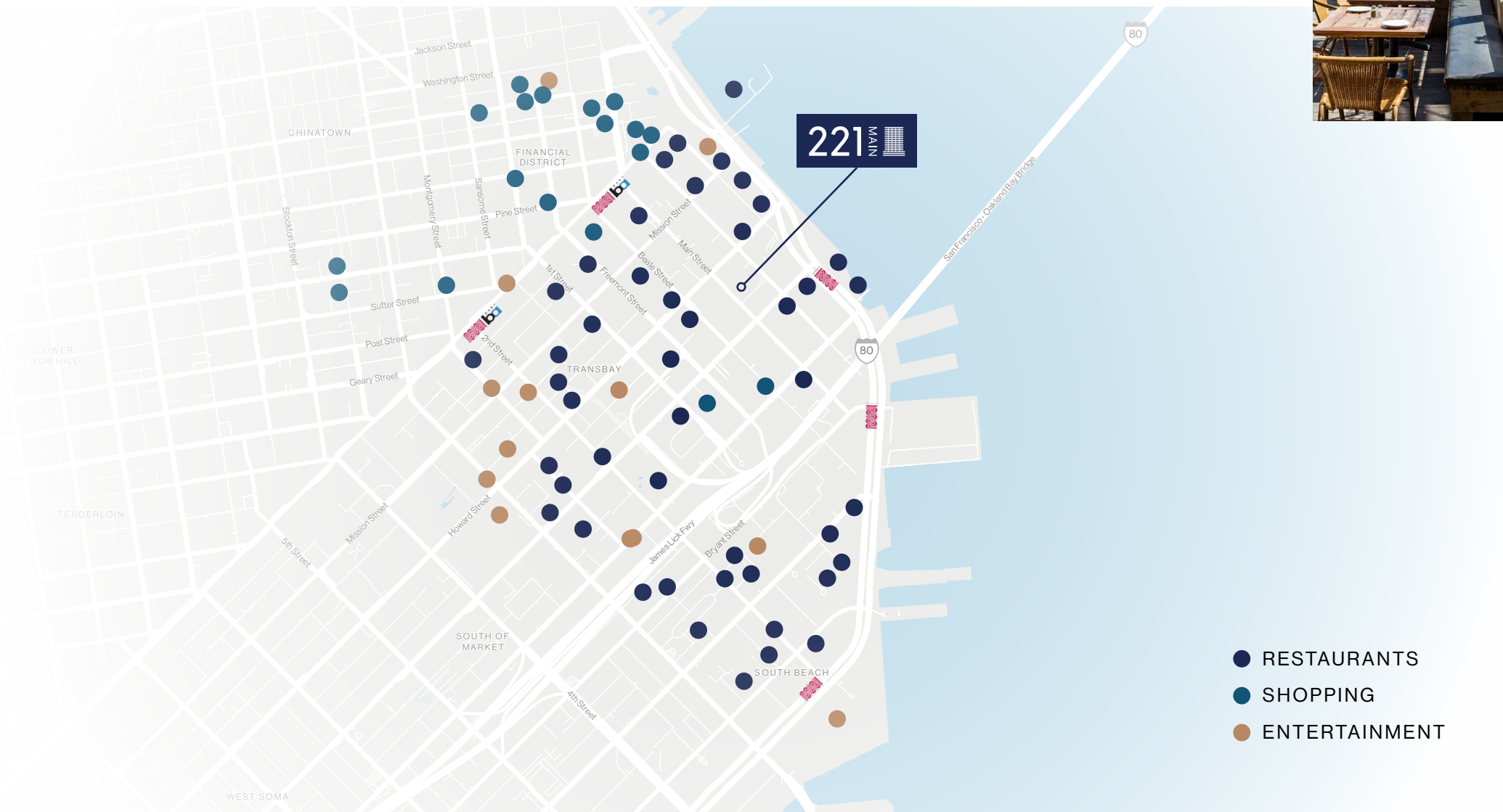


Services of the San Francisco  
Public Utilities Commission



# Local Amenities

221 Main's unprecedented location provides access to a plethora of neighborhood amenities, public transportation alternatives and easy access to the freeway. Directly across from the Transbay Temporary Terminal provides tenants with direct access to seven regional public transportation agencies, including BART, light rail, Caltrain, the ferry system and Muni.



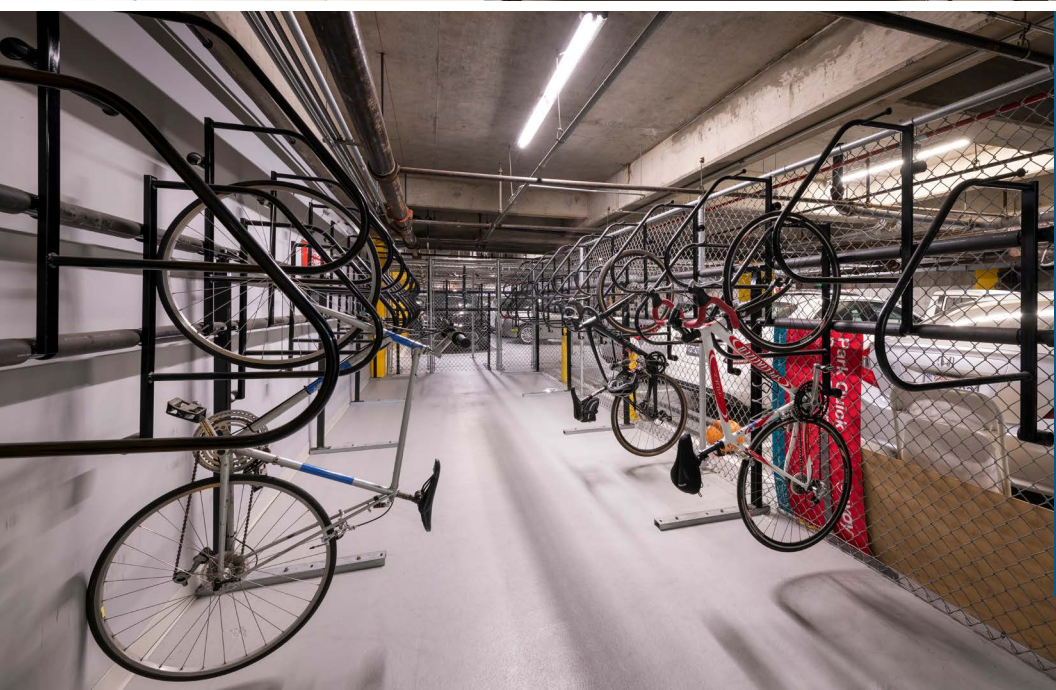


# Onsite Amenities

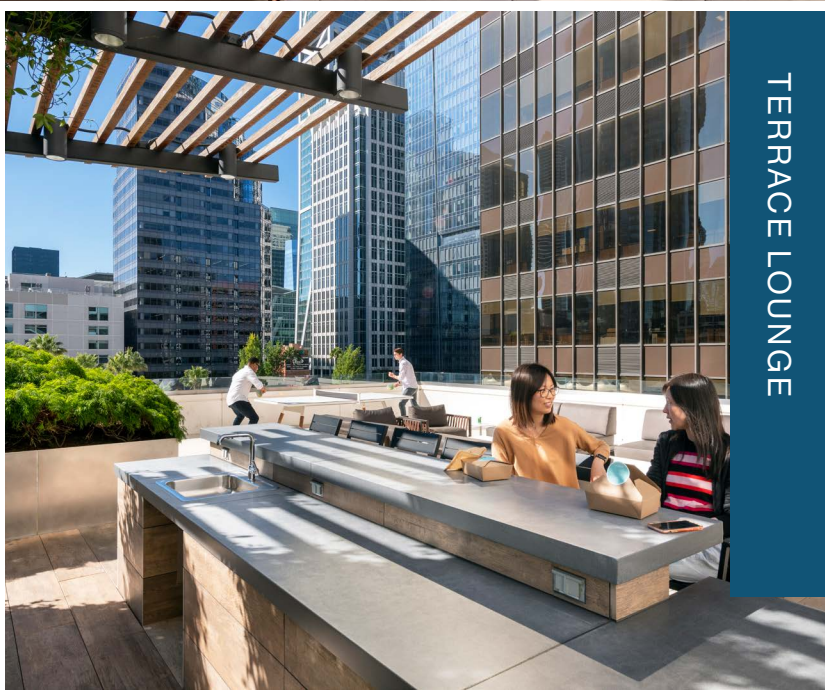
Expansive private terrace with unparalleled views and an abundance of areas to relax, regroup and collaborate.



TERRACE PING-PONG



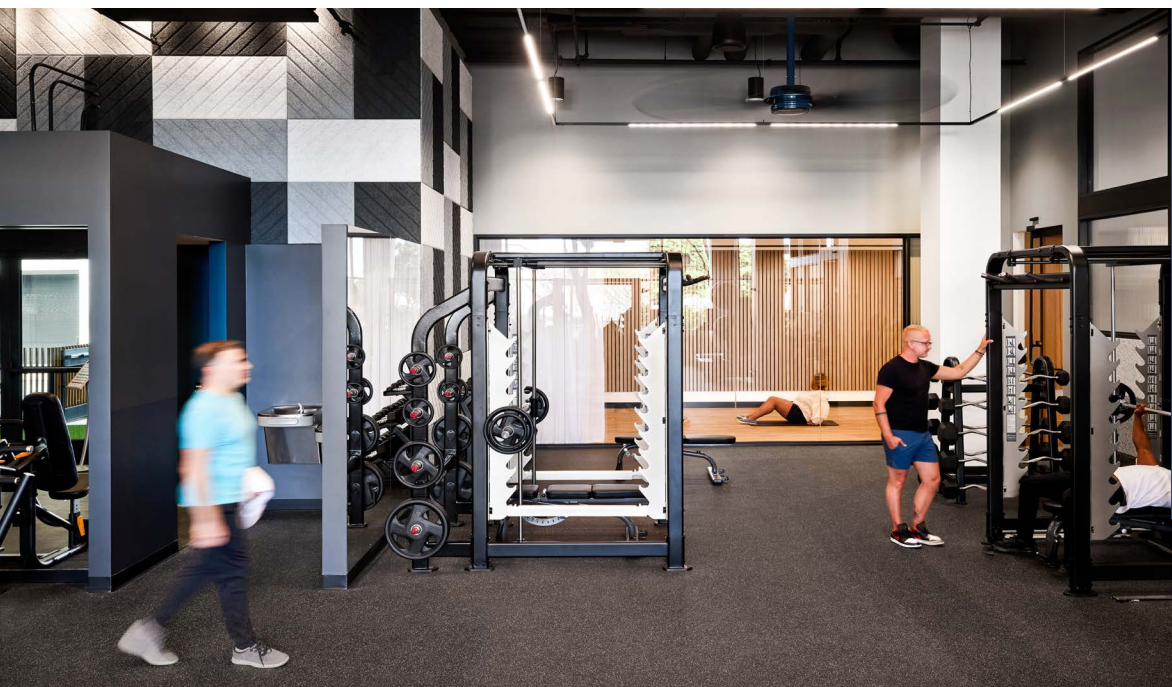
SECURE BIKE PARKING



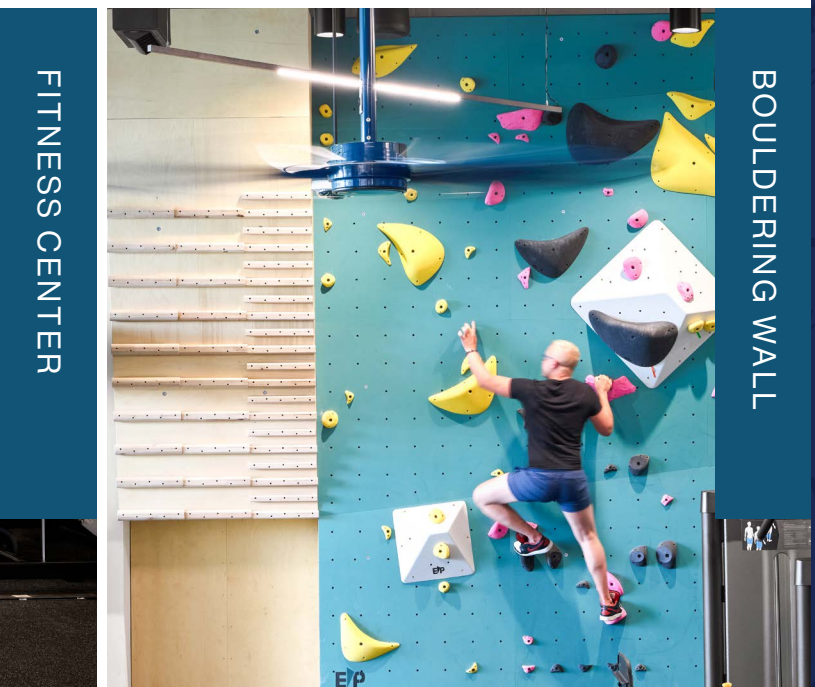
TERRACE LOUNGE



TENANT LOUNGE & BAR



FITNESS CENTER



BOULDERING WALL

# Availabilites

## SUITE 400 | 4,102 RSF

- Available Q3 2026
- As-Built

## SUITE NOTES:

- Brand New Spec Suite Underway!
- Creative Ceilings
- Fully Furnished
- 6 Private Offices
- 1 Large Conference Room
- Phone Room
- Kitchen
- Break Area
- Reception



OUTDOOR SEATING



LOCKERS & SHOWERS

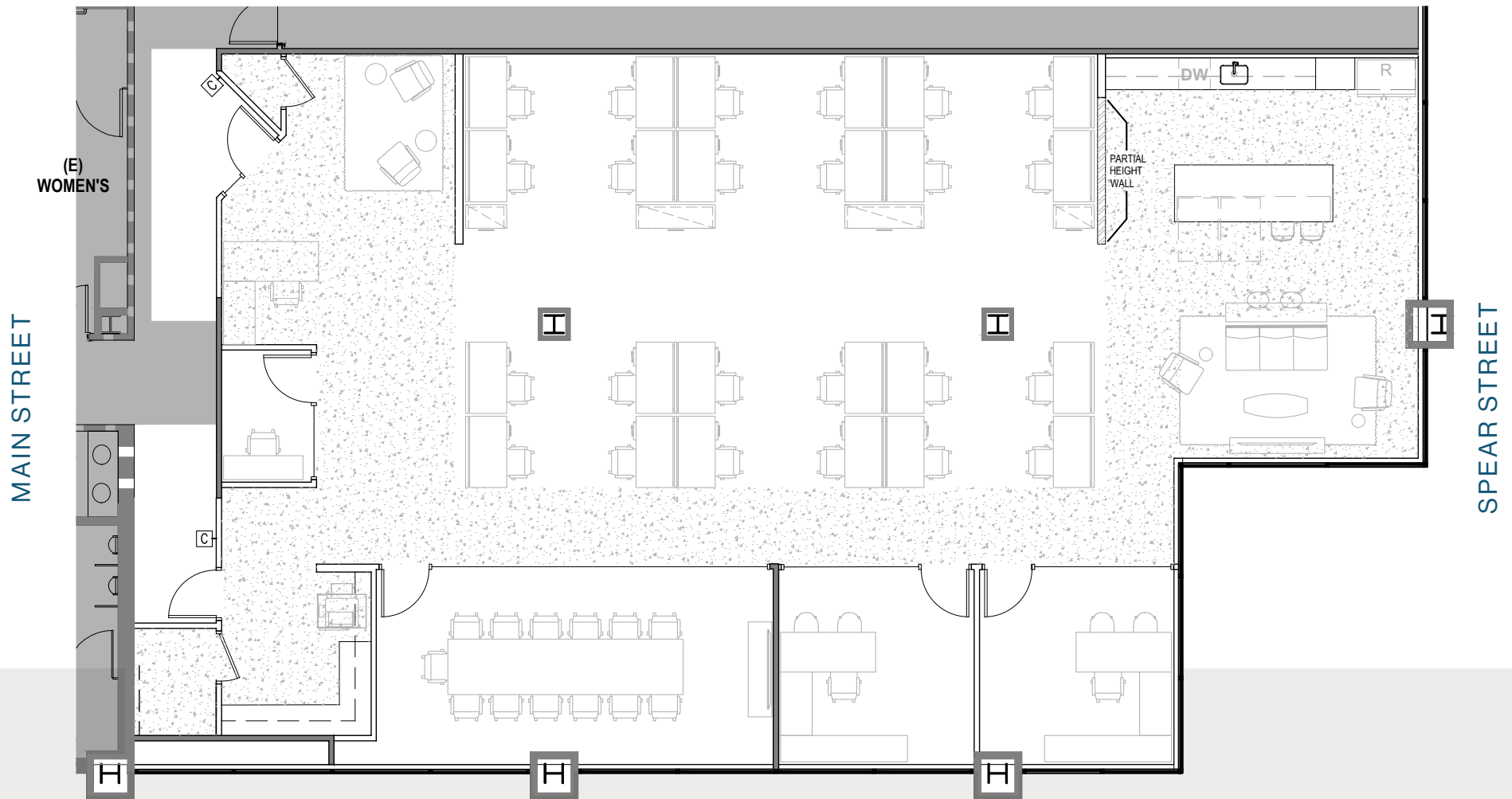
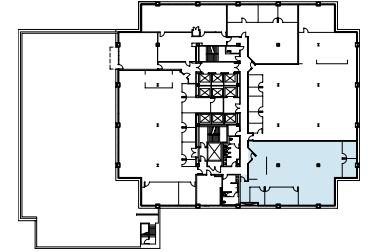


TENANT LOUNGE SEATING

# Suite 400 | 4,102 RSF

## AVAILABLE Q3 2026

- Brand New Spec Suite Underway!
- Creative Ceilings
- 6 Private Offices
- 1 Large Conference Room
- Phone Room
- Fully Furnished
- Kitchen
- Break Area
- Reception



# 221 MAIN



Columbia  
Property Trust



## WES POWELL

Executive Managing Director  
+1 415 395 4901  
wes.powell@jll.com  
License No.: 1702003

## STEVEN A. ANDERSON

Managing Director  
+1 415 395 7265  
steve.anderson@jll.com  
License No.: 869389

## LEXI CASTELLINO

Associate  
+1 650 400 8344  
lexi.castellino@jll.com  
RE Lic. # 02221002

Although information has been obtained from sources deemed reliable, JLL does not make any guarantees, warranties or representations, express or implied, as to the completeness or accuracy as to the information contained herein. Any projections, opinions, assumptions or estimates used are for example only. There may be differences between projected and actual results, and those differences may be material. JLL does not accept any liability for any loss or damage suffered by any party resulting from reliance on this information. If the recipient of this information has signed a confidentiality agreement with JLL regarding this matter, this information is subject to the terms of that agreement. ©2026 Jones Lang LaSalle Brokerage, Inc. All rights reserved.

[www.221main.com](http://www.221main.com)