

## INDUSTRIAL SPACE FOR LEASE

1881-1887 W STATE ROAD 84 FORT LAUDERDALE, FL



### PROPERTY DETAILS

- Rare vacancies at East Port Center that is a prime East Fort Lauderdale location.
- Bldg. I, Unit 102 is 7,050 +/- SF office/warehouse
- 50% office and 50% warehouse with one (1) dock loading door
- 2024 CAM estimated to be \$6.95 PSF
- 20' clear ceiling height
- Immediate access to I-95 and moments away from I-595 Turnpike, and all major highways
- Located in the northeast quadrant of I-95 and State Road 84 with street frontage on State Road 84.
- 5 minutes from Port Everglades

### ABOUT PROPERTY



#### PRICE

\$19.00- \$20.00 SF/yr (NNN)



#### YEAR BUILT

2001



#### AVAILABLE SF

7,050 SF



#### PARKING

Surface parking



#### LOCATION

SE Broward submarket

For more information:

**Jonathan Thiel**

954.652.2020 | Jthiel@Bergercommercial.Com  
bergercommercial.com

**Keith R. Graves, CCIM, SIOR**

954.652.2031 | Kgraves@Bergercommercial.Com



Information furnished regarding this property is from sources deemed reliable, but no warranty or representation as to the accuracy thereof and it is submitted subject to errors, omissions, prior sale, lease or withdrawal without prior notice.



INDUSTRIAL SPACE FOR LEASE

ADDITIONAL PHOTOS



For more information:

**Jonathan Thiel**

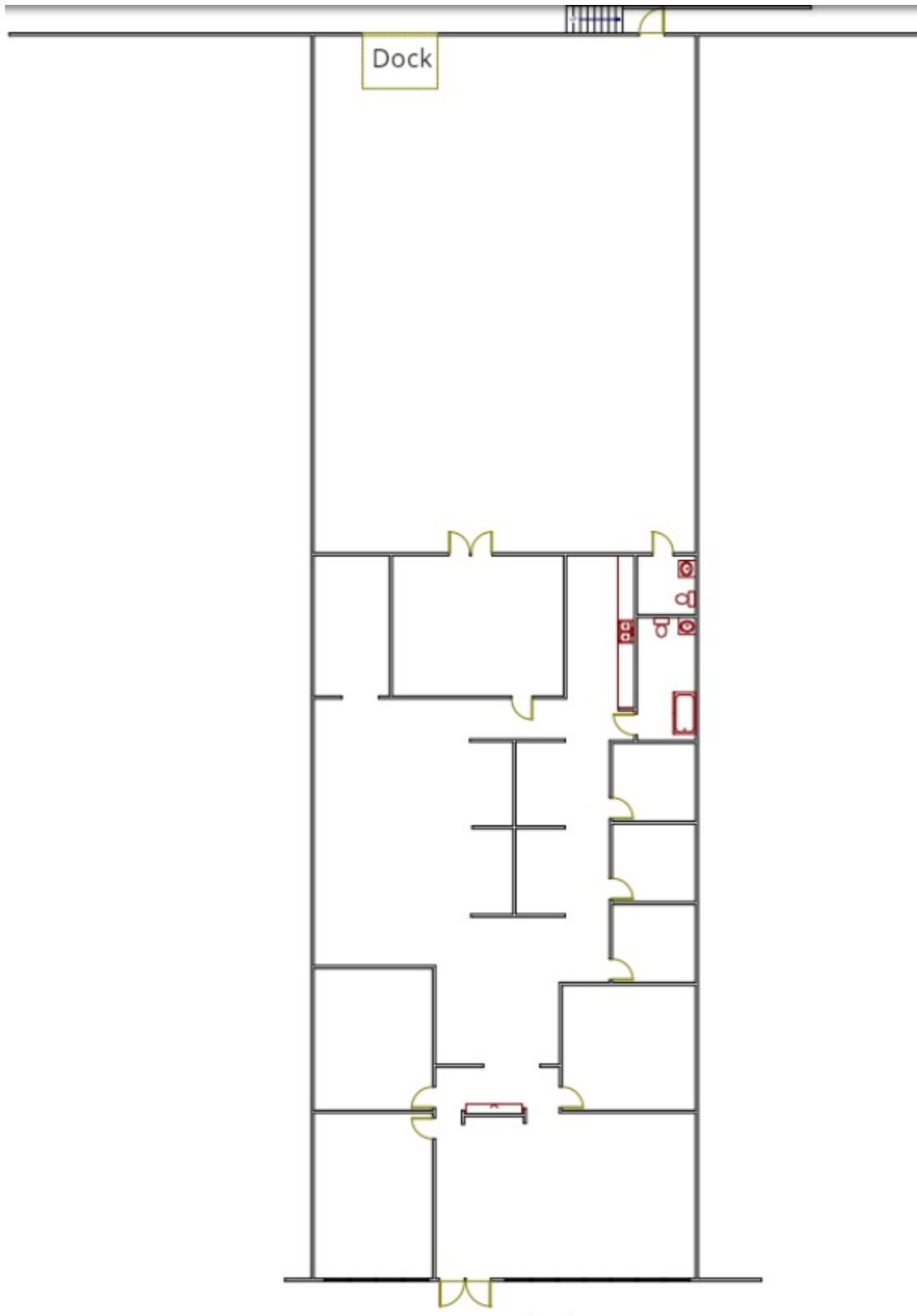
954.652.2020 | [Jthiel@Bergercommercial.Com](mailto:Jthiel@Bergercommercial.Com)  
[bergercommercial.com](http://bergercommercial.com)

**Keith R. Graves, CCIM, SIOR**

954.652.2031 | [Kgraves@Bergercommercial.Com](mailto:Kgraves@Bergercommercial.Com)



*Information furnished regarding this property is from sources deemed reliable, but no warranty or representation as to the accuracy thereof and it is submitted subject to errors, omissions, prior sale, lease or withdrawal without prior notice.*



For more information:

**Jonathan Thiel**

954.652.2020 | [Jthiel@Bergercommercial.Com](mailto:Jthiel@Bergercommercial.Com)  
[bergercommercial.com](http://bergercommercial.com)

**Keith R. Graves, CCIM, SIOR**

954.652.2031 | [Kgraves@Bergercommercial.Com](mailto:Kgraves@Bergercommercial.Com)

