

8522 NATIONAL
BOULEVARD

@ CONJUNCTIVE POINTS
CULVER CITY + LA



FOR LEASING INFORMATION, CONTACT:

Micheal Geller
Managing Director
micheal.geller@jll.com
CA License 00800010
(310) 486-1976

Gabriel Brown
Executive Vice President
gabe.brown@jll.com
CA License 01441920
(310) 435-4344

Josh Bernstein
Managing Director
josh.bernstein@cushwake.com
CA License 01828093
(310) 795-5947

Alexa Delahooke
Senior Associate
alexa.delahooke@cushwake.com
CA License 02091695
(626) 340-5391



Jones Lang LaSalle Brokerage, Inc., Real estate license #01856260.
Cushman & Wakefield. All rights reserved



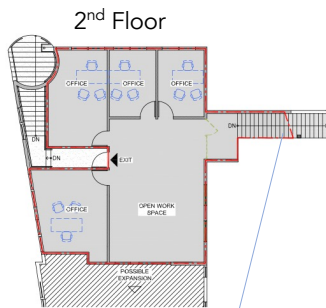
Beautiful move-in ready creative office space in an award-winning architectural building. Attributes include high ceilings, concrete floors, multiple glass offices, skylights and outdoor patio area, newly designed entry directly from parking. Located on National Blvd near the intersection of Hayden Ave, in the renowned Conjective Points creative office community, developed by Samitaur Constructs (Frederick & Laurie Samitaur Smith) and designed by Eric Owen Moss Architects. Walking distance to Expo Light Rail station and numerous restaurant amenities.



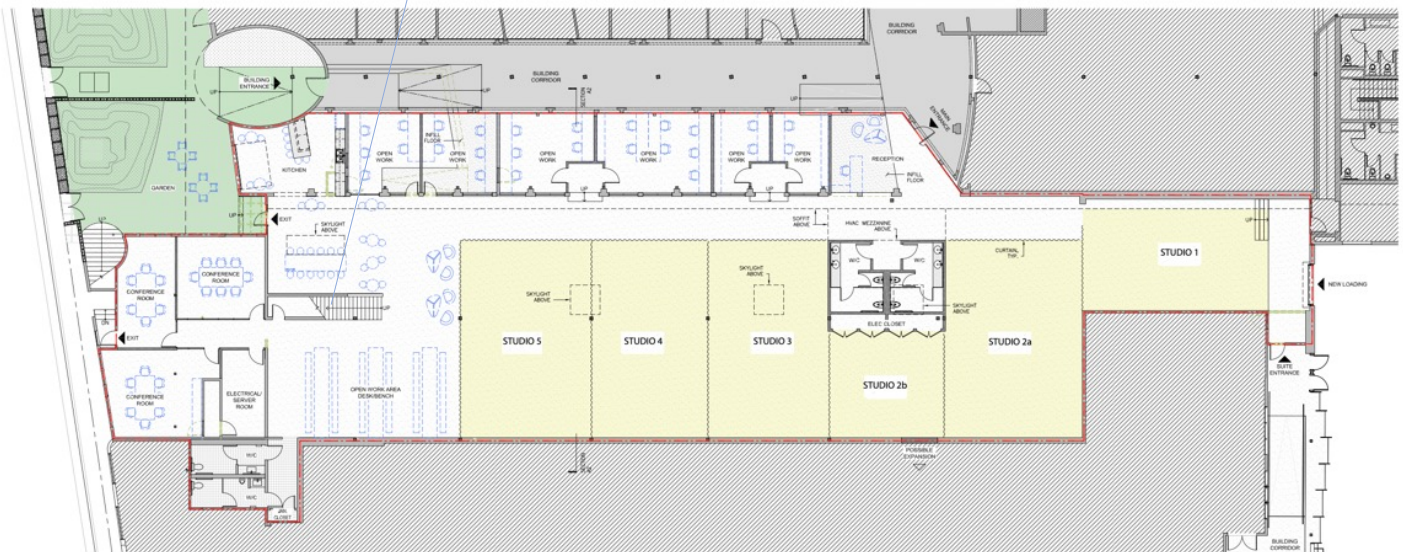
AVAILABLE SPACE: Suite 101 – 16,949 RSF
Suite 102 – 5,208 RSF
Suite 106 – 6,270 RSF

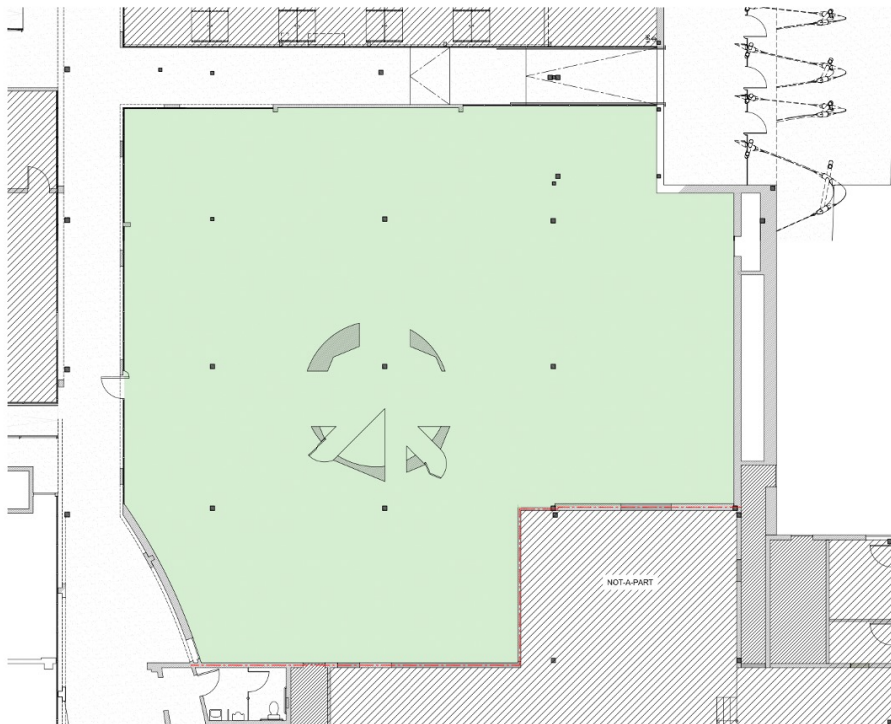
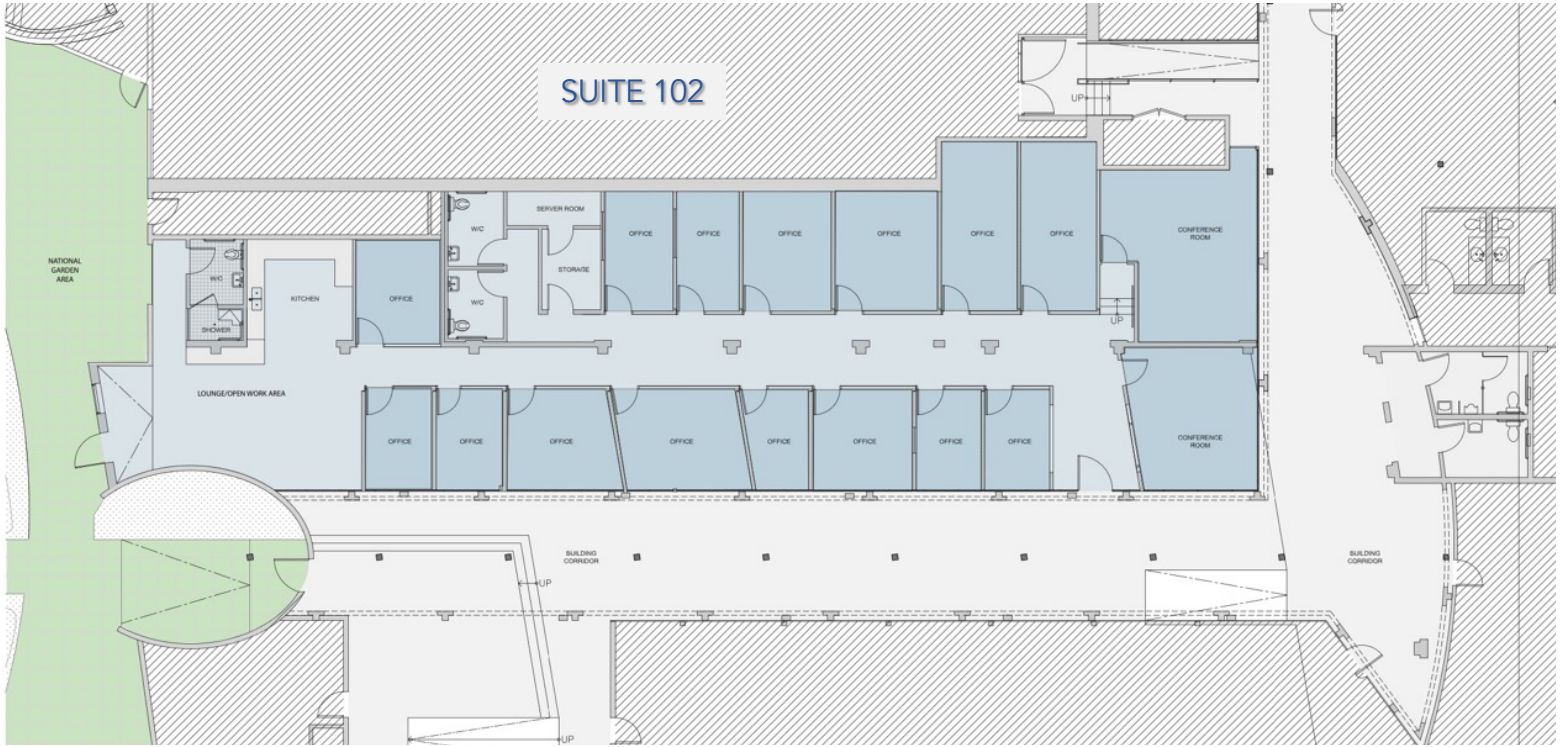
RENTAL RATE: NEGOTIABLE

PARKING: 3 spaces per 1,000 RSF
\$175 *unreserved*
\$275 *reserved*



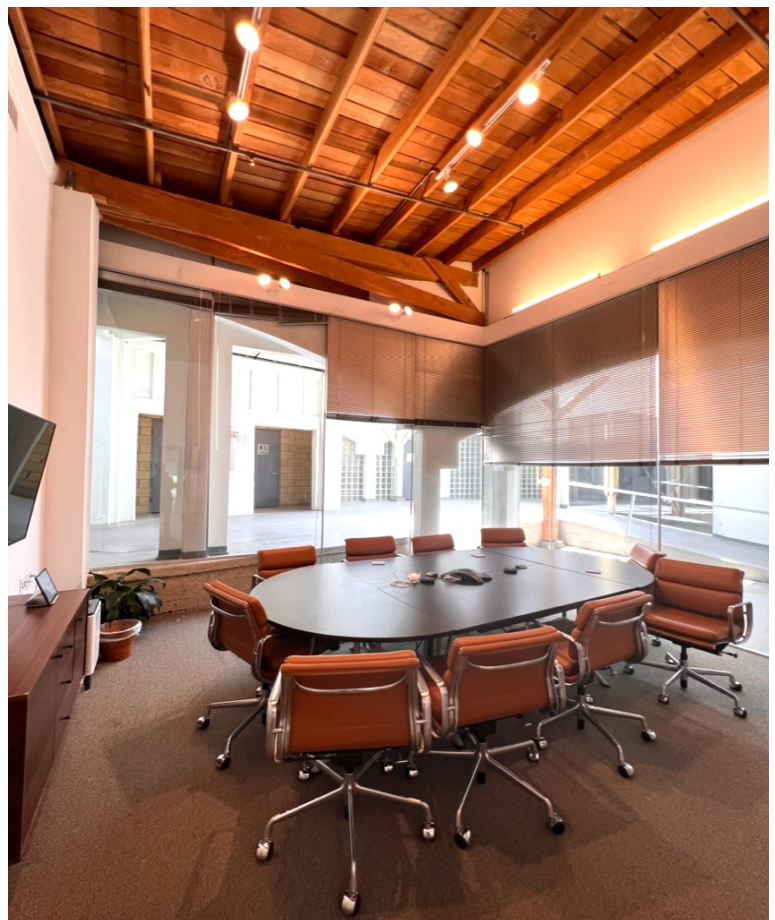
SUITE 101 – (HYPOTHETICAL LAYOUT)





8522 NATIONAL BOULEVARD

@ CONJUNCTIVE POINTS
CULVER CITY + LA



IDEALLY LOCATED IN THE HEART OF CULVER CITY'S HAYDEN TRACT – THE VIBRANT CREATIVE OFFICE EPICENTER OF WEST LA



CONJUNCTIVE POINTS

Conjunctive Points is a community of creative tenants from such diverse fields as entertainment, technology, advertising and design. The common theme: the desire to grow and develop in a visually striking environment unlike anything else in the world.

