

PRIME LOCATION CLASS A WAREHOUSE



63,438 SF FOR LEASE

PLAYFAIR BUILDING 2 SPOKANE, WA 99202

Property Details

60,503 SF Warehouse
2,935 SF Office

- 24' Clear Height
- 75' x 50' Column Spacing
- ESFR Sprinkler System
- LED Efficient Lighting
- Insulated Building
- Ample Parking

Available
September 1st 2026

Additional Features

- **1 Minute** from Future North-South Freeway
- **6 Minutes** to Downtown Spokane
- **13 Minutes** to Spokane International Airport

63,438 SF
AVAILABLE

DIVISIBLE TO
7,500 SF

OPEN
LISTING
FOR ALL
BROKERS

FOR LEASE | OFFICE / WAREHOUSE

PLAYFAIR BUILDING 2 | SPOKANE, WA 99202

ADDITIONAL DETAILS

PLAYFAIR BUILDING 2

SPOKANE, WA 99202



Base Rent: \$0.95/SF/MO + NNN

Loading:

- (9) 9' x 10' Dock High Doors
 - Dock Levelers
 - Dock Curtains
- (2) 12' x 14' Drive-in Grade Level Door

Zoning:

- Heavy Industrial
- Located Within the CEZ Zone
Sales tax deferral may be available for manufacturing construction

Power:

- 480V 3 Phase Power 300 Amp

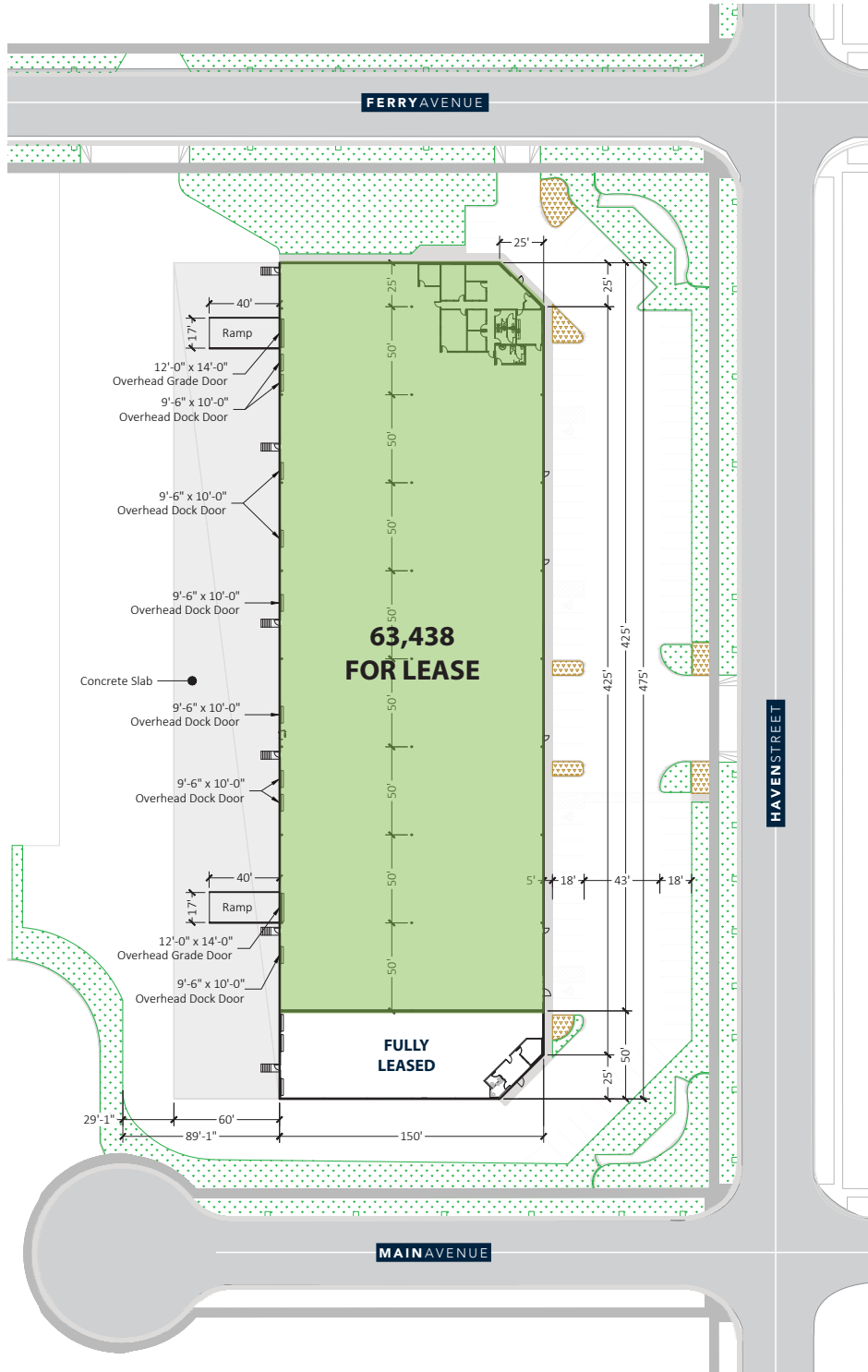
FOR LEASE | OFFICE / WAREHOUSE

PLAYFAIR BUILDING 2 | SPOKANE, WA 99202

FLOORPLAN - WAREHOUSE

PLAYFAIR BUILDING 2

SPOKANE, WA 99202



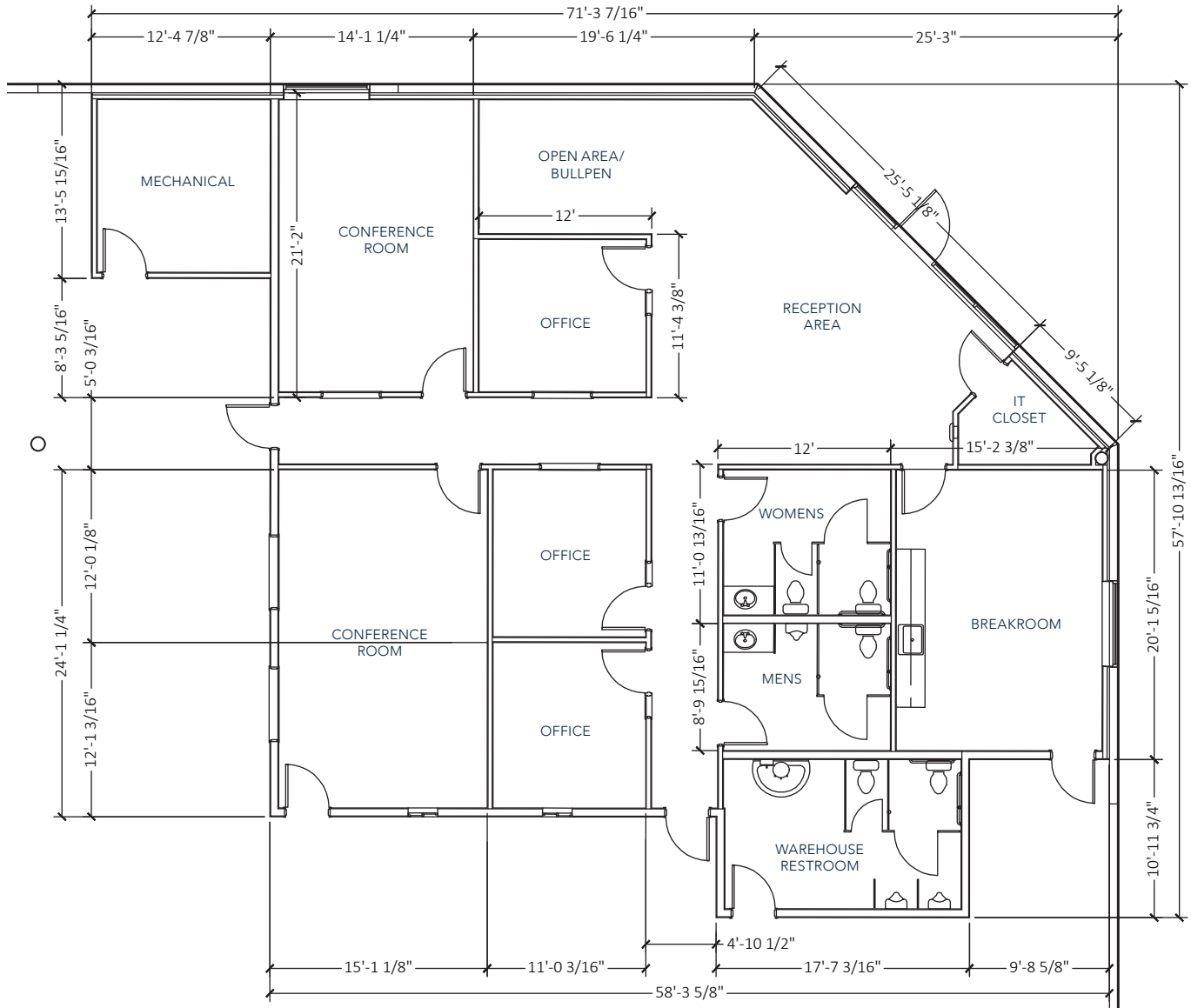
FOR LEASE | OFFICE / WAREHOUSE

PLAYFAIR BUILDING 2 | SPOKANE, WA 99202

FLOORPLAN - OFFICE

PLAYFAIR BUILDING 2

SPOKANE, WA 99202



FOR LEASE | OFFICE / WAREHOUSE

PLAYFAIR BUILDING 2 | SPOKANE, WA 99202

IMAGES

PLAYFAIR BUILDING 2

SPOKANE, WA 99202



TYPICAL INTERIOR



COMMERCE PARK LANDSCAPING

FOR LEASE | OFFICE / WAREHOUSE

PLAYFAIR BUILDING 2 | SPOKANE, WA 99202

AERIAL VIEW

PLAYFAIR BUILDING 2

SPOKANE, WA 99202



Total Available: 63,438 S.F.
Building Size: 70,625 S.F.

FOR LEASE | OFFICE / WAREHOUSE

PLAYFAIR BUILDING 2 | SPOKANE, WA 99202

AERIAL MAP

PLAYFAIR BUILDING 2

SPOKANE, WA 99202



Future US 395 - North Spokane Corridor

THE BENEFITS OF PLAYFAIR DID YOU KNOW...

TOP 100 Metropolitan Statistical Area (MSA)
TOP 75 Combined Statistical Area (CSA)

NEW ROADS AND INFRASTRUCTURE

Streets are extra wide with street lights, sidewalks and landscaping on both sides.

POWER All parcels have 13,200 V power underground.

**Most Conveniently Located
Industrial / Business Park**

UTILITIES Extra large water, sewer, gas lines installed to all lots.

WEATHER Playfair is located at lower elevation than all other large parks in Spokane County, assuring the least snow and ice.

FERRY/ALTAMONT CONNECTION

New Ferry/Altamont connection to I-90 in the works.