

# MIDPOINT

LOGISTICS CENTER

152 Route 206 • Hillsborough Township, New Jersey

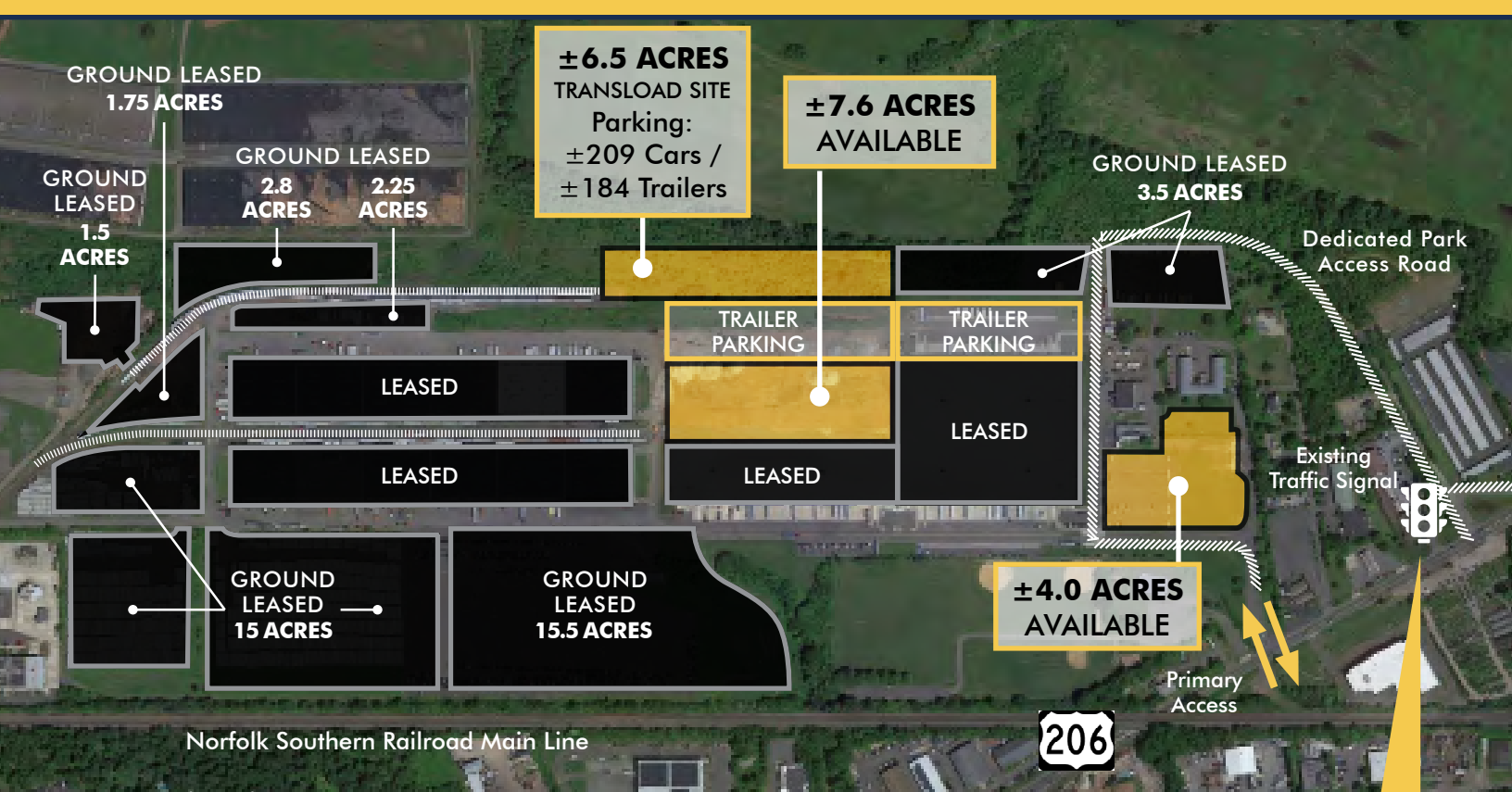
[cbre.us/midpoint](https://cbre.us/midpoint)

**± 18.85 TOTAL ACRES  
LAND FOR LEASE**

**± 7.6 ACRES**

**± 6.5 ACRES  
TRANSLOAD SITE**

**CBRE**



**±6.5 ACRES  
TRANSLOAD SITE**

**±7.6 ACRES**



**±6.5 ACRES  
TRANSLOAD SITE**

**±7.6 ACRES**

# MIDPOINT

LOGISTICS CENTER

152 Route 206 • Hillsborough Township, New Jersey

[cbre.us/midpoint](https://cbre.us/midpoint)



**BEN SHAPIRO**

SENIOR VICE PRESIDENT

+1 732 509 2824

[ben.shapiro@cbre.com](mailto:ben.shapiro@cbre.com)

**CHAD HILLYER**

EXECUTIVE VICE PRESIDENT

+1 201 712 5655

[chad.hillyer@cbre.com](mailto:chad.hillyer@cbre.com)

**GARRET KURTZ**

Associate

+1 201 712 5834

[garret.kurtz@cbre.com](mailto:garret.kurtz@cbre.com)

**MIDPOINT** LOGISTICS CENTER | [cbre.us/midpoint](https://cbre.us/midpoint)

**CBRE**

© 2026 CBRE, Inc. All rights reserved. This information has been obtained from sources believed reliable but has not been verified for accuracy or completeness. CBRE, Inc. makes no guarantee, representation or warranty and accepts no responsibility or liability as to the accuracy, completeness, or reliability of the information contained herein. You should conduct a careful, independent investigation of the property and verify all information. Any reliance on this information is solely at your own risk. CBRE and the CBRE logo are service marks of CBRE, Inc. All other marks displayed on this document are the property of their respective owners, and the use of such marks does not imply any affiliation with or endorsement of CBRE. Photos herein are the property of their respective owners. Use of these images without the express written consent of the owner is prohibited.