

AAA CAR CARE CENTER  
707 EAST GAY STREET  
WEST CHESTER, PA 19380

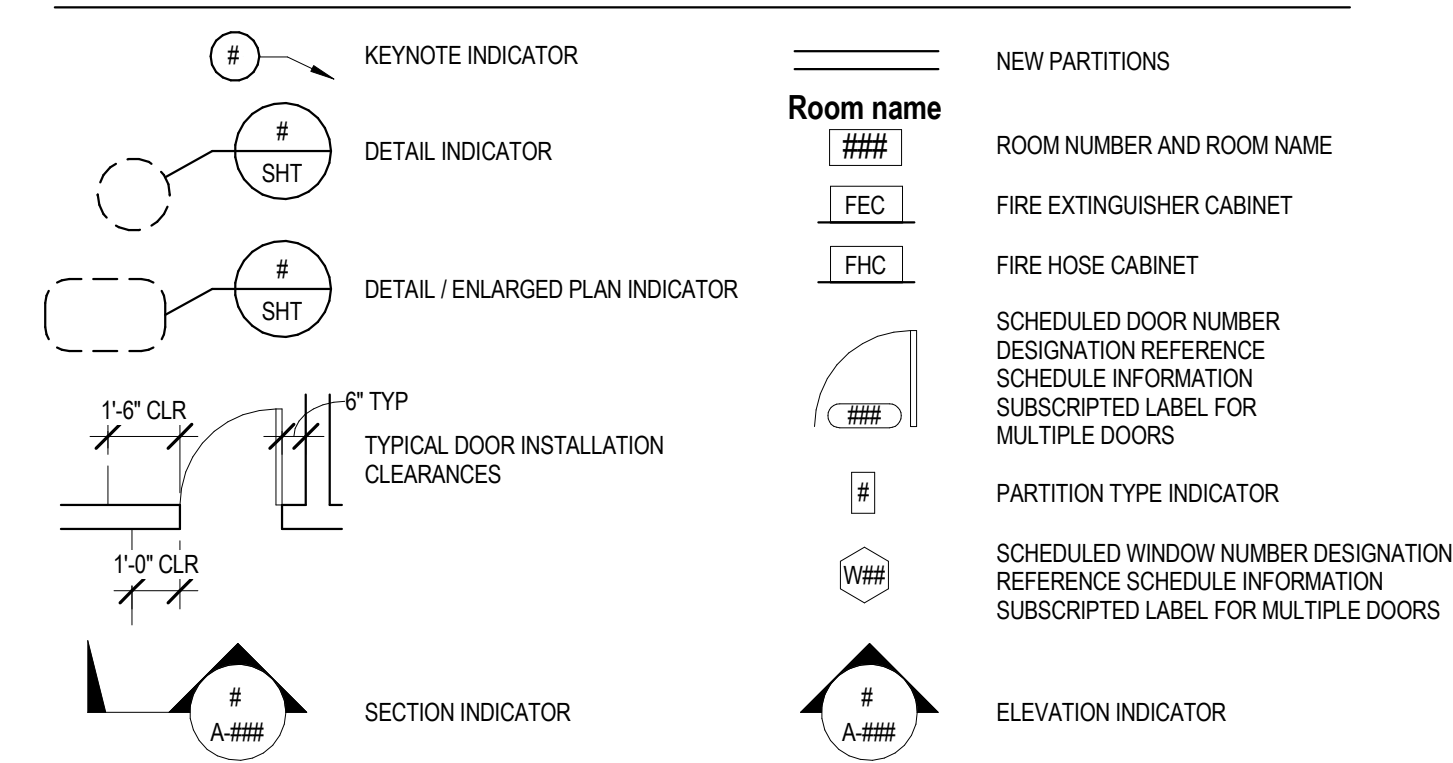
### CONSTRUCTION PLAN NOTES

- GENERAL NOTES**
- G1. REFERENCE LEGEND SHEET G-002 FOR GENERAL NOTES, RESPONSIBILITIES AND PROCEDURES. EXECUTION OF CONSTRUCTION CONTRACT OR PERFORMING WORK ACCEPTS THE CONDITIONS AND PROVISIONS DOCUMENTED WITHIN SHEET G-002 AND CONSIDERS THE FOLLOWING NOTATION SUPPLEMENTAL TO THOSE CONDITIONS.
  - G2. BRACE PARTITIONS TO STRUCTURE IN ACCORDANCE WITH 2009 IBC SECTION 16 AND ASCE 7-02 FOR SEISMIC SUPPORT.
  - G3. PARTITION COMPONENTS SHALL PROVIDE A FIRE RESISTIVE ASSEMBLY WITH FIRE RATINGS AS NOTED FOR EACH TYPE. MATERIAL AND COMPONENTS OF PARTITION ASSEMBLY AND MATERIAL WITHIN WALL NON-COMBUSTIBLE OR FIRE RESISTIVE TREATED MATERIAL.
  - G4. DOOR HARDWARE FUNCTION SHALL PROVIDE MECHANICAL FREE EGRESS TO EGRESS SIDE OF DOOR.
  - G5. ALL ANGLES ARE TO BE 0, 45 OR 90 DEGREES UNLESS NOTED OTHERWISE.
  - G6. REFERENCE SHEET A-111 FOR PARTITION TYPES.

### KEYED NOTES

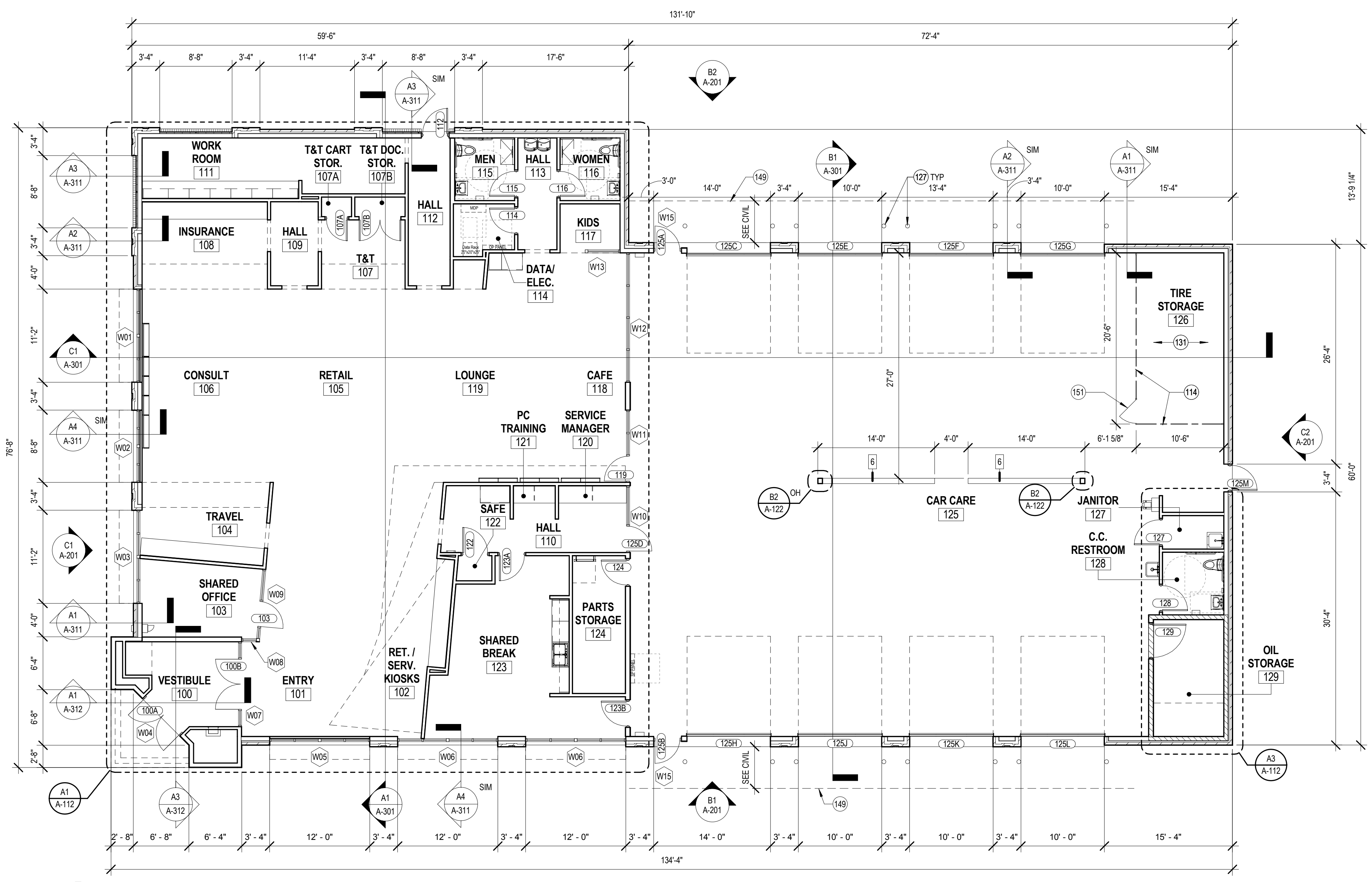
- \* INDICATES NEW OR REVISED NOTE
- ITEMS LABELED WITH KEYED NOTE INDICATOR ARE FOR SPECIFIC LOCATIONS ON PLANS
  - 114 G.C. TO PROVIDE CHAIN LINK FENCE TO BOTTOM OF STRUCTURE FOR TIRE STORAGE AREA.
  - 127 6" DIA. PTD. STL. PIPE BOLLARD, TYP., SEE DETAIL C1/A-501.
  - 131 COORDINATE DIMENSIONS OF CHAIN LINK FENCING W/ TIRE RACKING SPECS. AND CLEARANCES INDICATED ON G-003 SHEET.
  - 149 6" THICK REINF. CONCRETE APRON OVER 10 MIL. POLY VAPOR BARRIER OVER 4" GRAVEL BASE OVER EXISTING EARTH SUB-BASE. SEE STRUCTURAL DRAWINGS.
  - \* 151 LOCKABLE GATE WITH LOCINOX LAKQ-UZ LOCKSET.

### CONSTRUCTION LEGEND

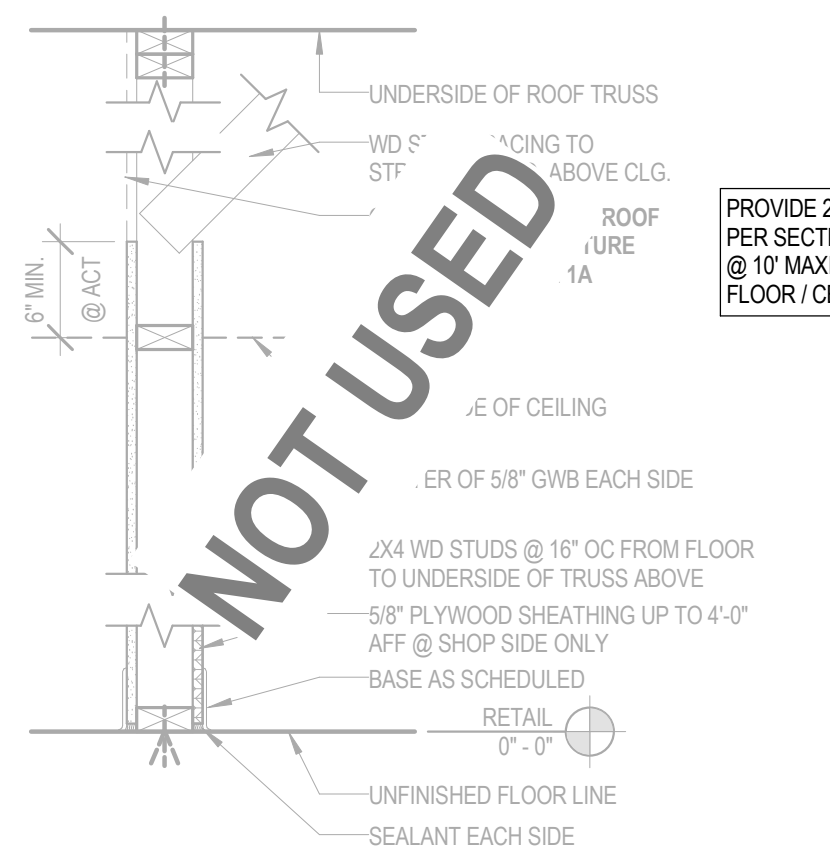


### PARTITION TYPE NOTES

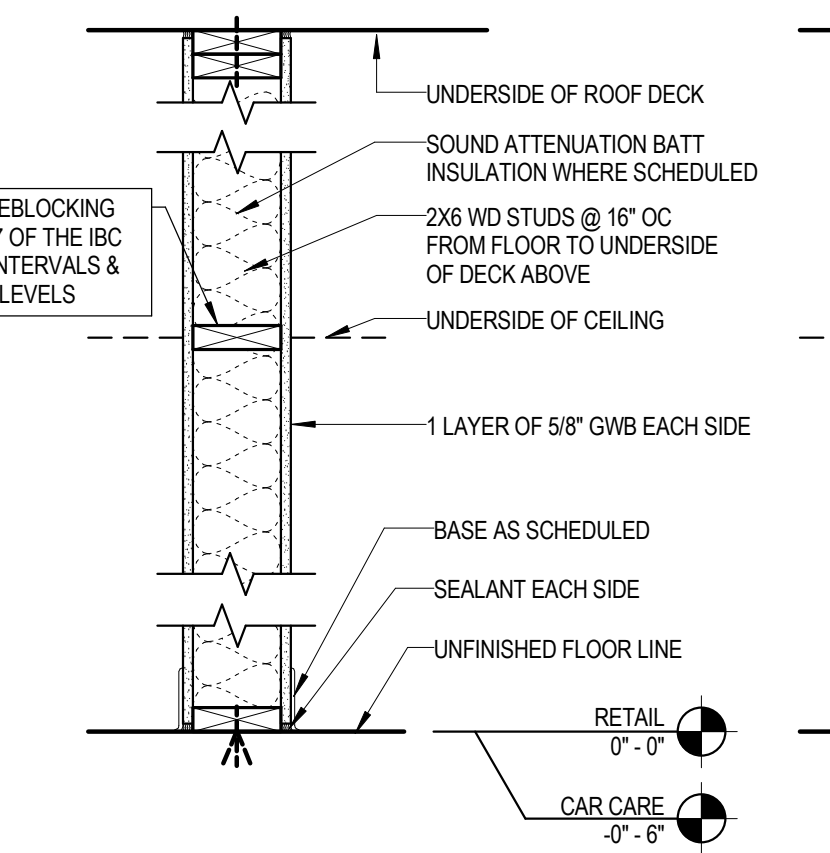
- GENERAL NOTES:**
- GWB WALL SUBSTRATE TERMINATES @ CEILING FRAMING @ GWB / WD. STUD CEILING LOCATIONS
  - USE ABUSE RESISTANT GWB FROM FINISH FLOOR TO 4'-0" AFF. AT ALL LOCATIONS IN SERVICE DEPARTMENT, S-1 OCCUPANCY
- PARTITION TAG LEGEND:**
- [XA] SIMILAR TO TYPE 'X' BUT WITH SOUND BATT INSULATION
  - [XB] SIMILAR TO TYPE 'X' BUT WITH CEILING ON ONE SIDE ONLY
  - [XC] SIMILAR TO TYPE 'X' BUT WITH GWB ON ONE SIDE ONLY AND CEILING ON ONE SIDE ONLY
  - [XD] SIMILAR TO TYPE 'X' BUT GWB TERMINATES AT UNDERSIDE OF ROOF TRUSSES



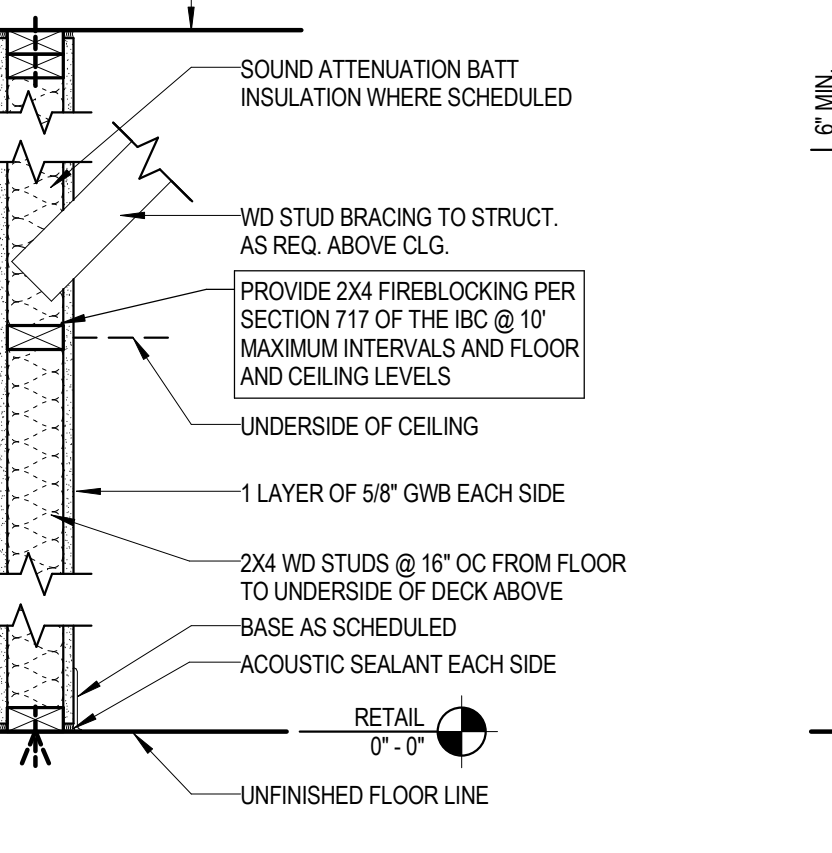
**(B1) CONSTRUCTION PLAN**  
SCALE: 1/8" = 1'-0"



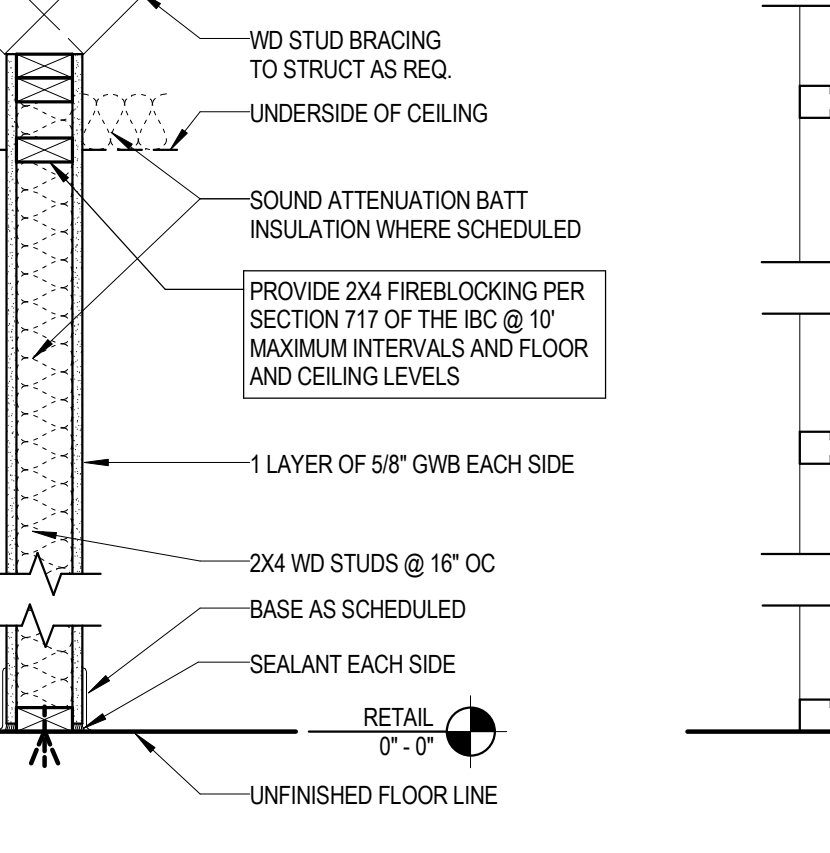
**PARTITION TYPE 1** SCALE: 1" = 1'-0"  
FIRE RATING: NON-RATED U/LF: N/A ACOUSTIC RATING: NONE



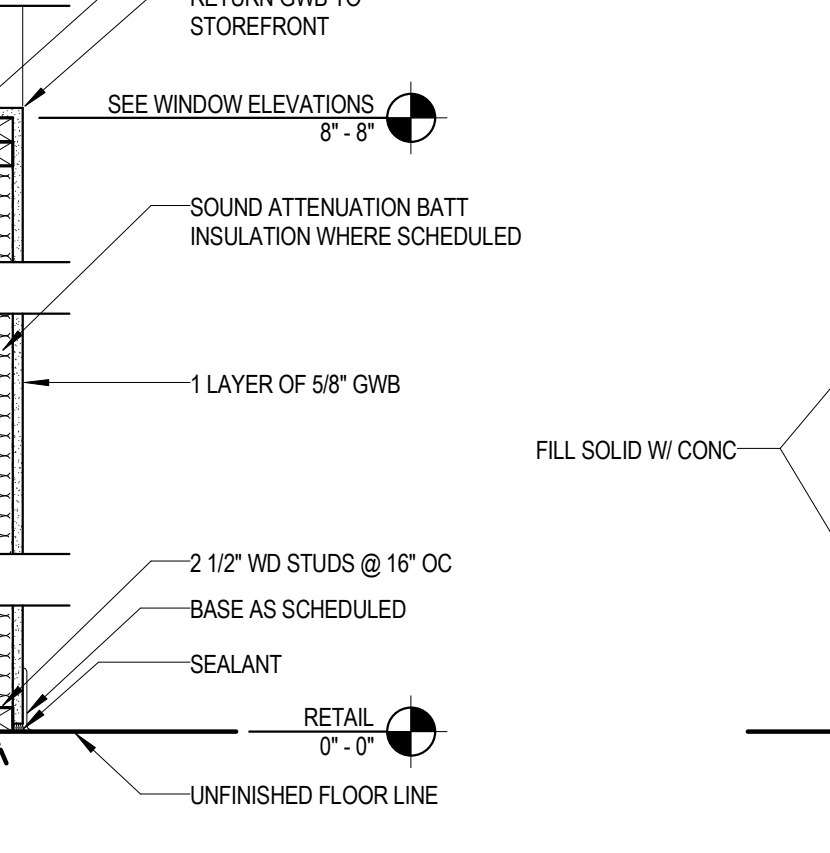
**PARTITION TYPE 2** SCALE: 1" = 1'-0"  
FIRE RATING: NON-RATED U/LF: N/A ACOUSTIC RATING: NONE



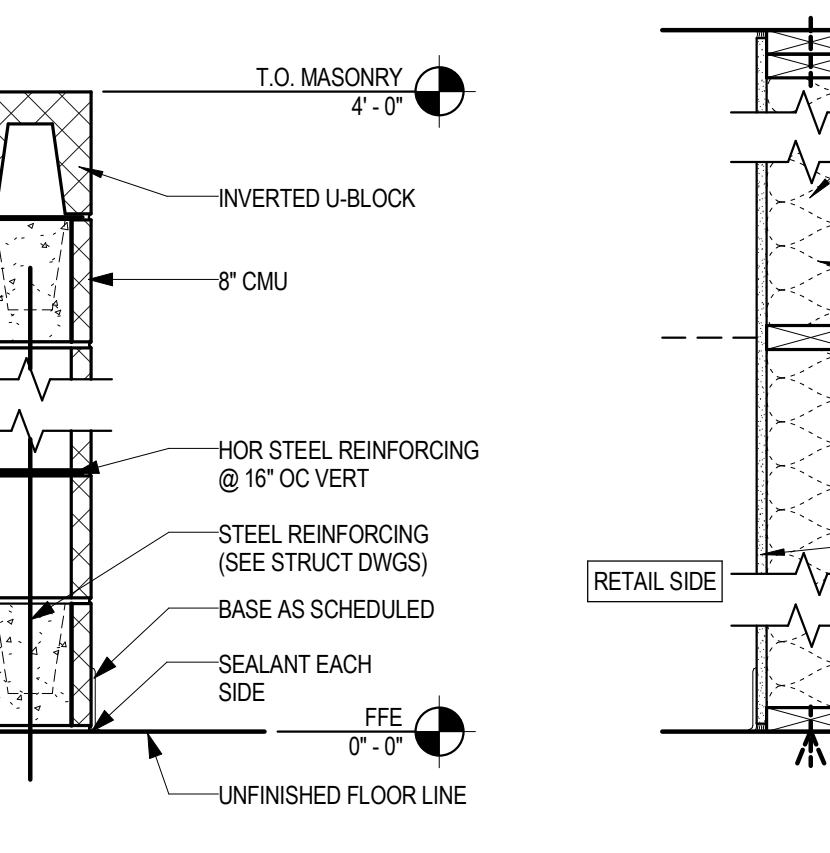
**PARTITION TYPE 3** SCALE: 1" = 1'-0"  
FIRE RATING: NON-RATED U/LF: N/A ACOUSTIC RATING: NONE



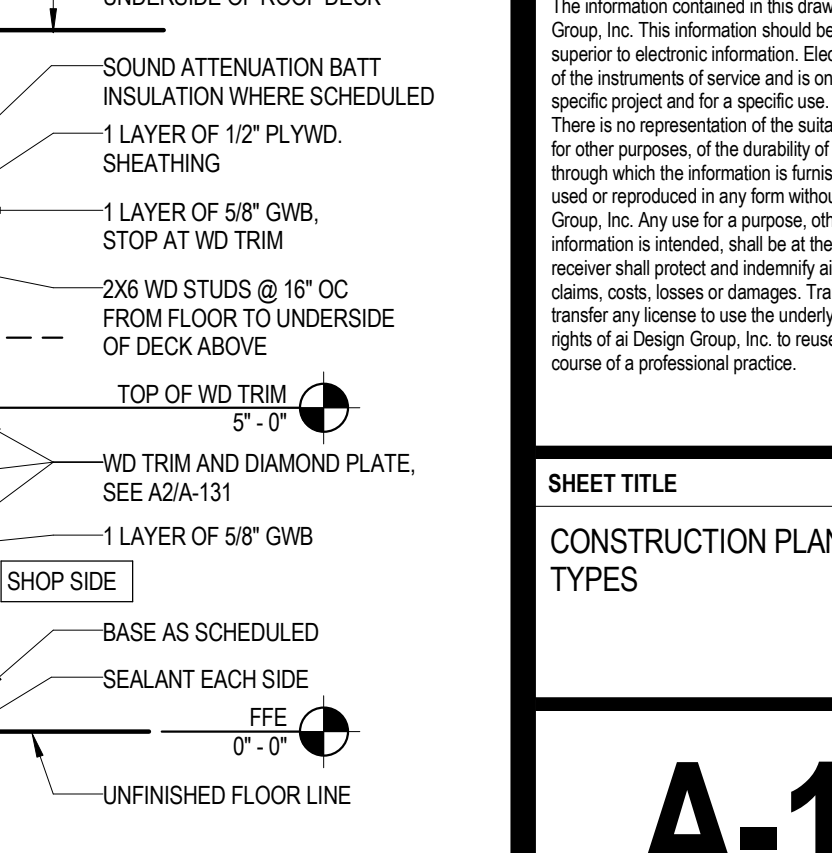
**PARTITION TYPE 4** SCALE: 1" = 1'-0"  
FIRE RATING: NON-RATED U/LF: N/A ACOUSTIC RATING: NONE



**PARTITION TYPE 5** SCALE: 1" = 1'-0"  
FIRE RATING: NON-RATED U/LF: N/A ACOUSTIC RATING: NONE



**PARTITION TYPE 6** SCALE: 1" = 1'-0"  
FIRE RATING: NON-RATED U/LF: N/A ACOUSTIC RATING: NONE



**PARTITION TYPE 7** SCALE: 1" = 1'-0"  
FIRE RATING: NON-RATED U/LF: N/A ACOUSTIC RATING: NONE

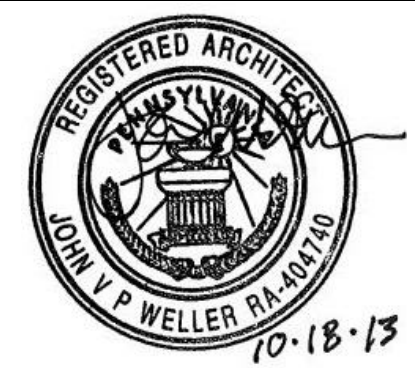
Rev#	Date	Description
10/18/2013		ISSUED FOR CONSTRUCTION

The information contained in this drawing is the property of ai Design Group, Inc. This information should be deemed to be correct and superior to electronic information. Electronic information is a component of the instruments of service and is solely for the Client's benefit on the specific project and for a specific use. There is no representation of the liability of the electronic information for other purposes, or the durability of the information, or the medium through which the information is furnished. This drawing may not be used or reproduced in any form without the written consent of ai Design Group, Inc. Any use for purposes other than that for which the information is intended, shall be at the receiver's risk and therefore the receiver shall protect and indemnify ai Design Group, Inc. from any claims, costs, losses or damages. Transfer of the information does not transfer any license to use the underlying software or extinguish the rights of ai Design Group, Inc. to reuse the information in the general course of a professional practice.

SHEET TITLE  
**CONSTRUCTION PLAN AND PARTITION TYPES**

**A-111**

DRAWN BY: JETB CHECKED BY: RD  
PROJECT NO. 12303



**AAA CAR CARE CENTER**  
 707 EAST GAY STREET  
 WEST CHESTER, PA 19380

**FINISH PLAN NOTES**

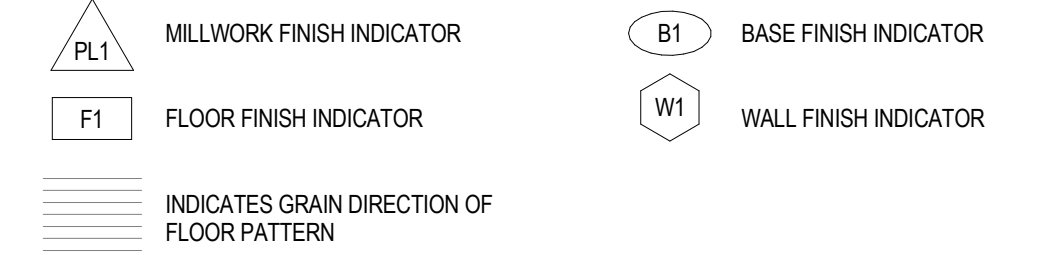
**GENERAL NOTES**

- G1. CONTRACTOR SHALL REFERENCE LEGEND SHEET G-002 FOR GENERAL CONDITIONS, RESPONSIBILITIES, AND PROCEDURES. THE CONTRACTOR, EVIDENCED BY PERFORMING WORK FOR THE PROJECT HAS REVIEWED AND ACCEPTED THE CONDITIONS AND PROVISIONS DOCUMENTED WITHIN SHEET G-002 AND SHALL CONSIDER THE FOLLOWING NOTATION SUPPLEMENTAL TO THOSE CONDITIONS.
- G2. REFERENCE ELEVATION DRAWINGS FOR INFORMATION REGARDING MILLWORK FINISH LOCATIONS AND MULTIPLE FINISH DESIGN ELEMENTS
- G3. PREPARE AND PAINT TELEPHONE EQUIPMENT BOARD TO MATCH ADJACENT WALL FINISH, U.N.O.
- G4. FLOOR FINISH MATERIALS SHALL COMPLY WITH 2009 IBC CHAPTER 8 WALL AND CEILING FINISHES SECTION 803 (TABLE 803.4 AND FLOOR FINISHES SECTION 804)
- G5. FLOOR FINISH TRANSITIONS AT DOOR LOCATIONS SHALL BE CENTERED UNDER DOOR IN CLOSED POSITION
- G6. FLOOR FINISH TRANSITIONS OCCURRING IN CASED OR GYPSUM BOARD OPENINGS SHALL BE CENTERED ON OPENING DEPTH, U.N.O.
- G7. PROVIDE TRANSITION STRIPS AT FLOOR FINISH TRANSITIONS. COLOR TO BE COORDINATED WITH ADJACENT FLOORFINISHES.
- G8. GYP. BOARD SURFACE PREPARATION IN CONCEALED AREAS ABOVE PLENUM SHALL BE LEVEL 2, U.N.O.
- G9. FIRE RATED PLENUM SURFACES SHALL BE PREPARED AND LABELED ACCORDING TO BUILDING / FIRE CODES.
- G10. GYP. BOARD SURFACES SHALL BE LEVEL 4 AT EXPOSED CONDITIONS, U.N.O.
- G11. ALUMINUM STOREFRONT DOOR & FRAME FINISH SHALL BE CLEAR ANODIZED, U.N.O.
- G12. HOLLOW METAL DOOR & FRAME FINISH SHALL BE PAINTED TO MATCH ADJACENT WALL FINISH, U.N.O.
- G13. WOOD DOORS TO BE SCW ROTARY CUT NATURAL BIRCH CLEAR STAIN.
- G14. G.W.B. WALL OPENINGS SHALL BE PAINTED SW918 WHITEROCK EGG SHELL, U.N.O., SEE DOOR SCHEDULE
- G15. CENTER VCT PATTERN IN ROOMS, U.N.O.

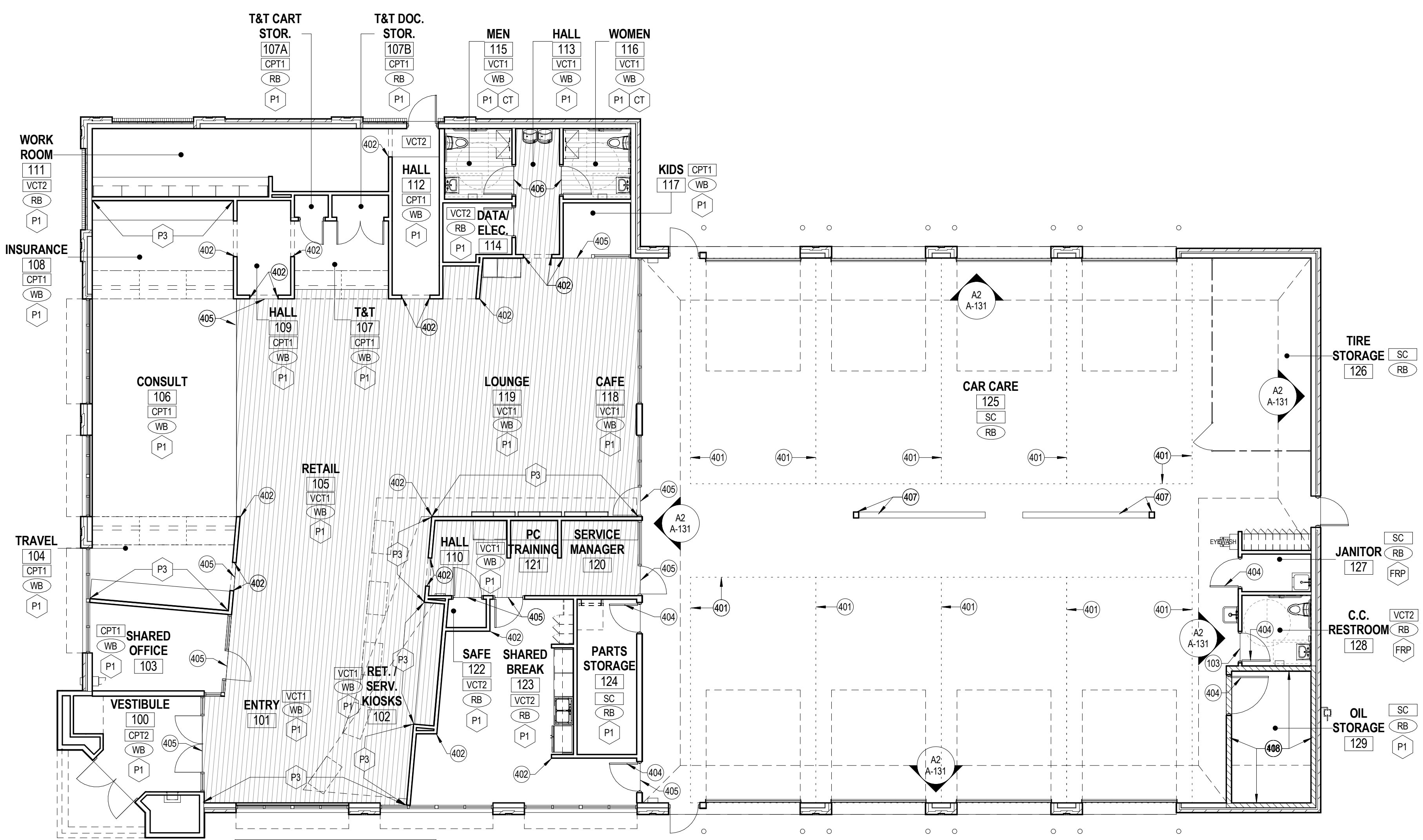
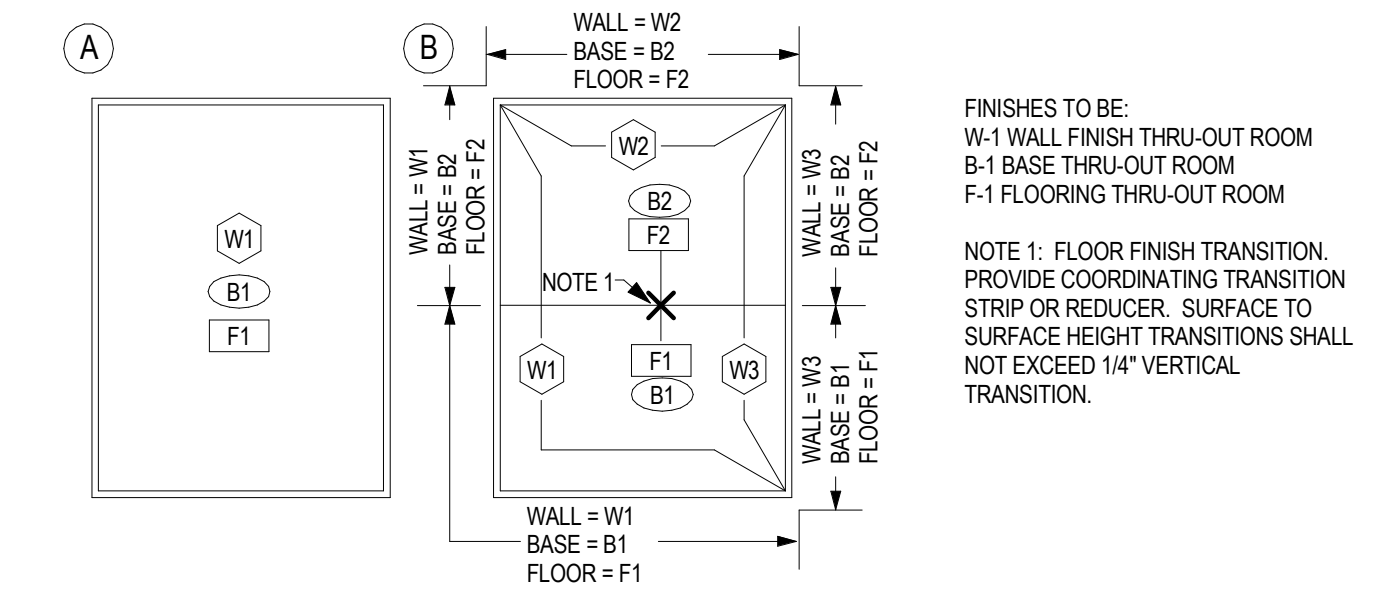
**KEYED NOTES**

- ITEMS LABELED WITH KEYED NOTE INDICATOR ARE FOR SPECIFIC LOCATIONS ON PLANS
- 103 PROVIDE WATER LINE WITH EMERGENCY SHUT-OFF VALVE FOR COFFEEMAKER BY TENANT.
- 118 8" HIGH CONC. CONTAINMENT CURB @ BASE OF OIL STORAGE WALLS. SET DOORS ON TOP OF CURB - REFER TO STRUCTURAL DWGS.
- 401 TRAFFIC MARKING PAINT LINES AS REQ'D TO DESIGNATE SERVICE BAYS. COORD. LOCATION/LAYOUT WITH OWNER.
- 402 PROVIDE AND INSTALL KORROGUARD C-103 SERIES 2" CORNER GUARDS TO 48" ABOVE BASE. COLOR PORCELAIN. INSTALL WITH CONST. ADHESIVE PER MANUF. INSTRUCTIONS.
- 404 PAINT H.M. DOORS/FRAMES IN SHOP AREA P3. (SHOP SIDE ONLY)
- 405 LINE OF FLOOR MATERIAL TRANSITION
- 406 LINE OF CHANGE IN DIRECTION OF FLOORING GRAIN
- 407 LOW CMU WALL AND POWER POLE FROM BOTTOM OF TRUSS TO BE PAINTED P3, REF A2/A-122
- 408 WRAP FLOOR FINISH UP AND OVER 8" TALL CONCRETE CONTAINMENT CURB ON ALL VISIBLE FACES FOR COMPLETE COVERAGE

**FINISH SYMBOL LEGEND**



**FINISH PLAN LABELING EXAMPLES**



NOTE: SEE INTERIOR ELEVATIONS FOR ADDITIONAL INTERIOR FINISH NOTES

**B1 FINISH PLAN**  
 SCALE: 1/8" = 1'-0"

**FINISH MATERIALS**

SEE NOTE G4

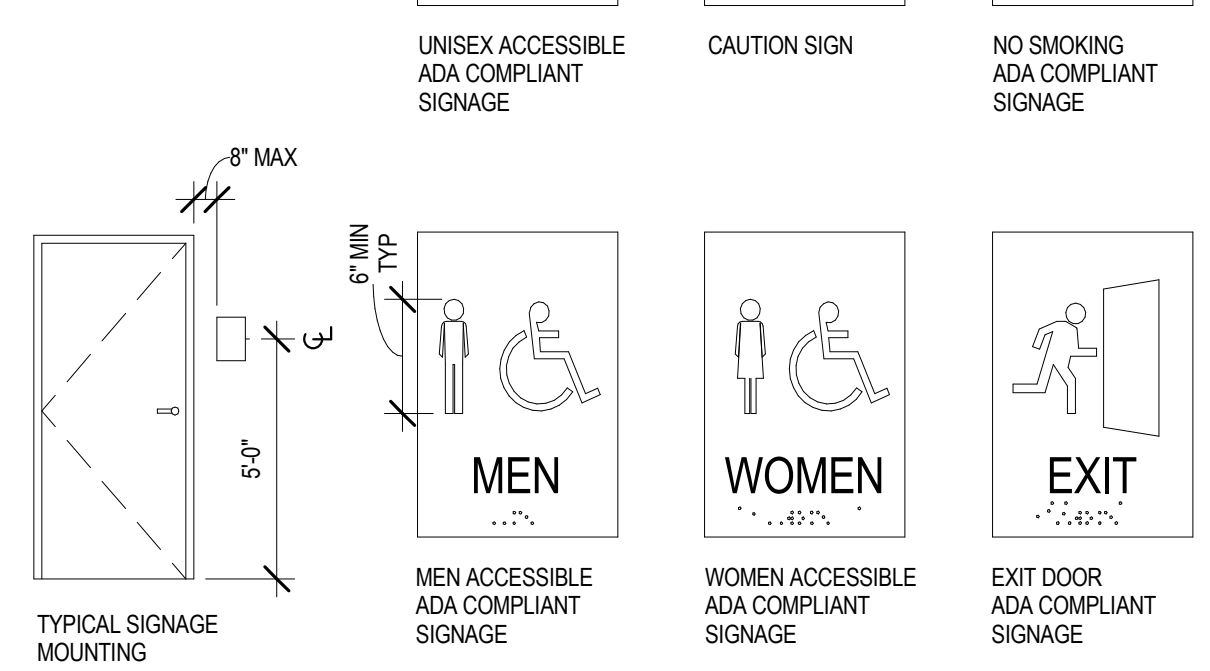
FLOOR FINISH		
CPT1	MATERIAL - CARPET MANUFACTURER - LEES - MOHAWK REP. MICHELE RUBANDO (287) 443-8171 NUMBER - 50311-63435 PATTERN - LEES THOUGHT PATTERNS, DIRECT GLUE DOWN COLOR - MOCCASIN BROWN APPLICATION - LEES CARPET ADHESIVE (NO SUBSTITUTES ALLOWED)	
CPT2	MATERIAL - CARPET MANUFACTURER - MATS, INC. - (800-628-7462) PATTERN - BERKSHIRE COLOR - CHARCOAL, NO NOSING	
VCT1	MATERIAL - VINYL COMPOSITION TILE MANUFACTURER - ARMSTRONGS - (717-397-0611) NUMBER - NATURAL CREATIONS, ARBORART COLOR - TP041 NOUVEAU MAPLE - LIGHT NATURAL APPLICATION - 4' x 36" PLANKS	
VCT2	MATERIAL - VINYL COMPOSITION TILE MANUFACTURER - MOHAWK - (800-241-4066) NUMBER - STONEWALK PVC-FREE TILES COLOR - BLACK NIGHT, STN-820 APPLICATION - 12" x 12" TILES	
SC	MATERIAL - SEALED CONCRETE MANUFACTURER - EUCCO CHEMICAL COMPANY STYLE - EUCCO DIAMOND HARD APPLICATION - PROVIDE 2 COAT APPLICATION W/ 2ND COAT APPLIED DURING FINAL STAGES OF CONSTRUCTION (CONSULT TIMING OF 2ND COAT W/ OWNER PRIOR TO APPLICATION)	

WALL FINISH		
P1	MATERIAL - PAINT MANUFACTURER - SHERWIN WILLIAMS - (800-474-3794) NUMBER - 918 WHITEROCK APPLICATION - CEILINGS: FLAT FINISH, WALLS: EGG SHELL FINISH, DOORS & FRAMES: SEMI-GLOSS EPOXY PAINT @ RESTROOM & SHOP WALLS)	
P2	AT SIM CONDITION, APPLY GLOSS FINISH. (3 COAT MINIMUM) MATERIAL - PAINT MANUFACTURER - BENJAMIN MOORE - (800-344-0400) NUMBER - NO. 826, STUNNING (DARK BLUE) APPLICATION - EGG SHELL FINISH	
P3	AT SIM CONDITION, APPLY GLOSS FINISH. (3 COAT MINIMUM) MATERIAL - PAINT MANUFACTURER - BENJAMIN MOORE - (800-344-0400) NUMBER - NO. 2002-10, VERMILLION (RED) APPLICATION - EGG SHELL FINISH (EPOXY PAINT @ SHOP WALLS)	
FRP	AT SIM CONDITION, APPLY GLOSS FINISH. (3 COAT MINIMUM) MATERIAL - FRP PANELS MANUFACTURER - AS SUBMITTED BY G.C. FOR SHOP DRAWING APPROVAL NUMBER - C.C. RESTROOM 128 APPLICATION -	
CT	MATERIAL - CERAMIC TILE MANUFACTURER - CROSSVILLE - (931-484-2110) NUMBER - NO. A1107, MUD PIE (12x12 WITH 4x12 BULLNOSE TOP BAND) APPLICATION - GROUT TO BE #80 HAYSTACK BY CUSTOM BUILDING PRODUCTS, OR APPROVED EQUAL MEN 115 & WOMEN 116	

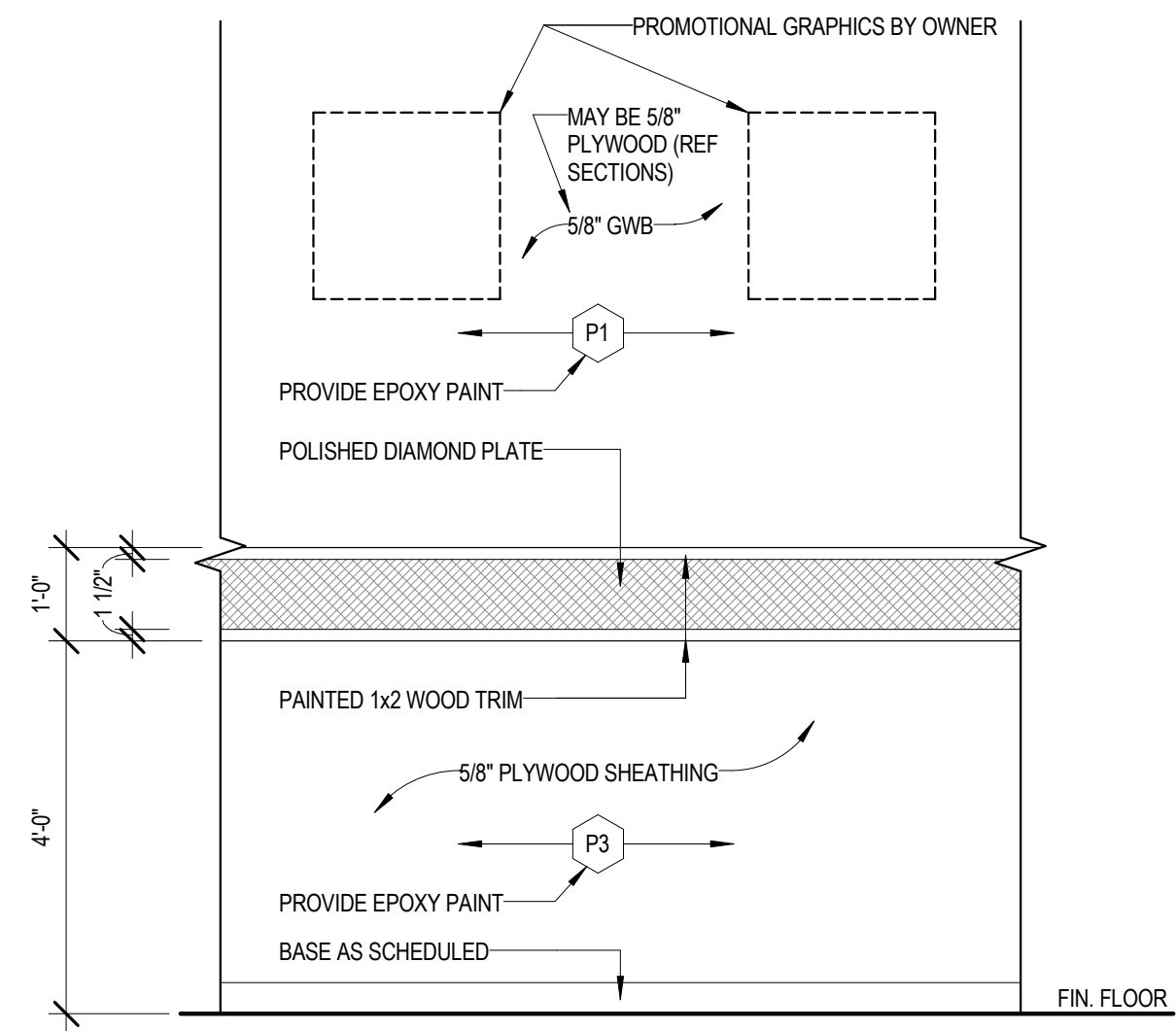
BASE FINISH		
RB1	MATERIAL - 4" VINYL COVER BASE MANUFACTURER - (6" HIGH IN TOILET ROOMS AND JANITOR CLOSET) JOHNSONITE - (800-899-8916)	
WB	MATERIAL - 1x4 STRAIGHT PAINTED WOOD BASE MANUFACTURER - P1	
MILLWORK FINISH		
PL1	MATERIAL - PLASTIC LAMINATE MANUFACTURER - WILSONART - (800-433-3222) NUMBER - D354-60, DESIGNER WHITE APPLICATION -	
PL2	MATERIAL - PLASTIC LAMINATE MANUFACTURER - WILSONART - (800-433-3222) NUMBER - D91-60, SLATE GREY APPLICATION - CAR CARE BREAK CABINETS	
PL3	MATERIAL - PLASTIC LAMINATE MANUFACTURER - WILSONART - (800-433-3222) NUMBER - 1595-60, BLACK APPLICATION - CAR CARE BREAK COUNTERTOPS	
PL4	MATERIAL - PLASTIC LAMINATE MANUFACTURER - WILSONART - (800-433-3222) NUMBER - 10776, KENSINGTON MAPLE APPLICATION - CAFE CABINETS	

NOTE: ALL EXPOSED INSTALLATION SCREW HEADS TO MATCH LAMINATE FINISH COLOR (TYPICAL @ ALL MILLWORK & SLATWALL INSTALLATION)

NOTE:  
 1. ALL TACTILE SIGNAGE TO COMPLY WITH REQUIREMENTS OF CHAPTER 7 OF ICC/ANSI A117.1-2003  
 2. INSTALL SIGNAGE ON LATCH SIDE OF DOOR, G.C. TO PROVIDE AND INSTALL



**A1 ADA COMPLIANT SIGNS**  
 SCALE: NTS



**A2 TYPICAL CAR CARE ELEVATION**  
 SCALE: 1/2" = 1'-0"

Rev#	Date	Description
10/18/2013		ISSUED FOR CONSTRUCTION

The information contained in this drawing is the property of ai Design Group, Inc. This information should be deemed to be correct and superior to electronic information. Electronic information is a component of the instruments of service and is only for the Client's benefit on the specific project and for a specific use. There is no representation of the suitability of the electronic information for other purposes, of the durability of the information, or the medium through which the information is furnished. This drawing may not be used or reproduced in any form without the written consent of ai Design Group, Inc. Any use for purposes other than that for which the information is intended, shall be at the receiver's risk and therefore the receiver shall protect and indemnify ai Design Group, Inc. from any claims, costs, losses or damages. Transfer of the information does not transfer any license to use the underlying software or extinguish the rights of ai Design Group, Inc. to use the information in the general course of a professional practice.

**SHEET TITLE**

FINISH PLAN, SCHEDULE AND DETAILS

**A-131**

DRAWN BY: JETB CHECKED BY: RD  
 PROJECT NO. 12303