



FOR LEASE

22835 Savi Ranch Parkway, Unit D
Yorba Linda, CA

2,232 SF Industrial Unit

INDUSTRIAL FEATURES:

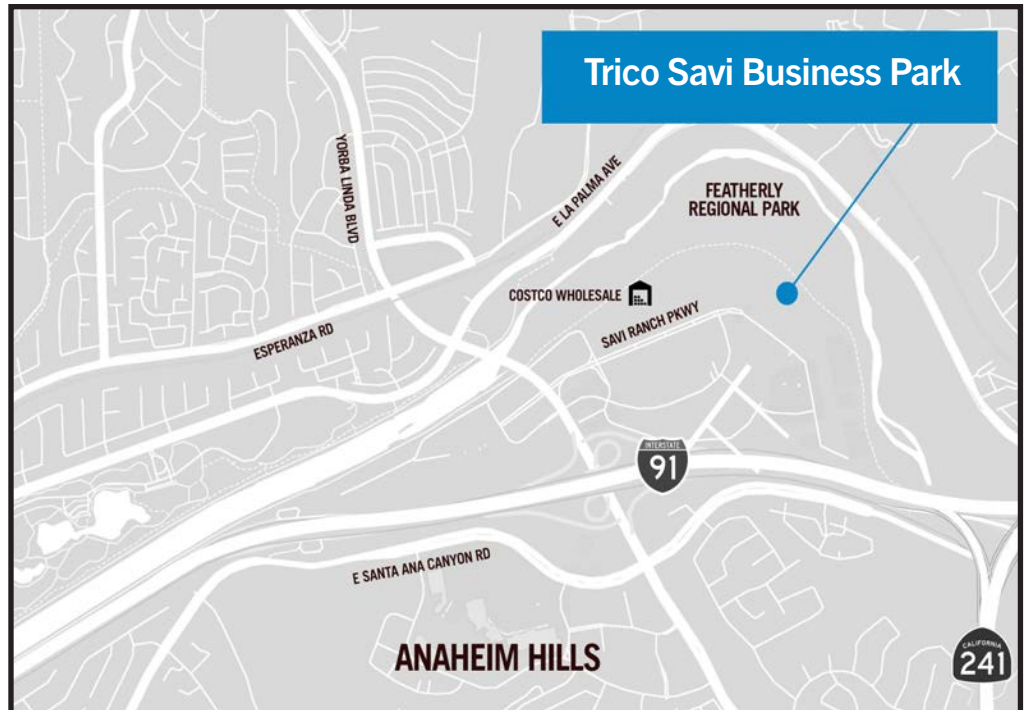
- Coffee Bar
- Two Restrooms
- Some Units with Exterior Truck Wells
- 10' x 12' & 12' x 14' Truck Doors
- 100 to 400 AMP Power (Expandable)
- Skylights & LED Lighting in Warehouse

OFFICE FEATURES:

- Air Conditioned / Heated
- Min. 1 Private Office

OTHER FEATURES:

- Ample Parking
- Freshly Painted



FOR FURTHER DETAILS:

ANDREA BERUMEN
andrea@tricoREALTY.com
License #02174559

This information has been furnished from sources which we deem reliable; however, we do not guarantee its accuracy and assume no liability. Do not rely on any of the information contained herein without verifying it yourself directly with the listing broker or owner.

Trico Realty, Inc.
License #00342120

3100-A Pullman Street
Costa Mesa, CA 92626

714-751-4420
TricoRealty.com




FOR LEASE

22835 Savi Ranch Parkway, Unit D
Yorba Linda, CA

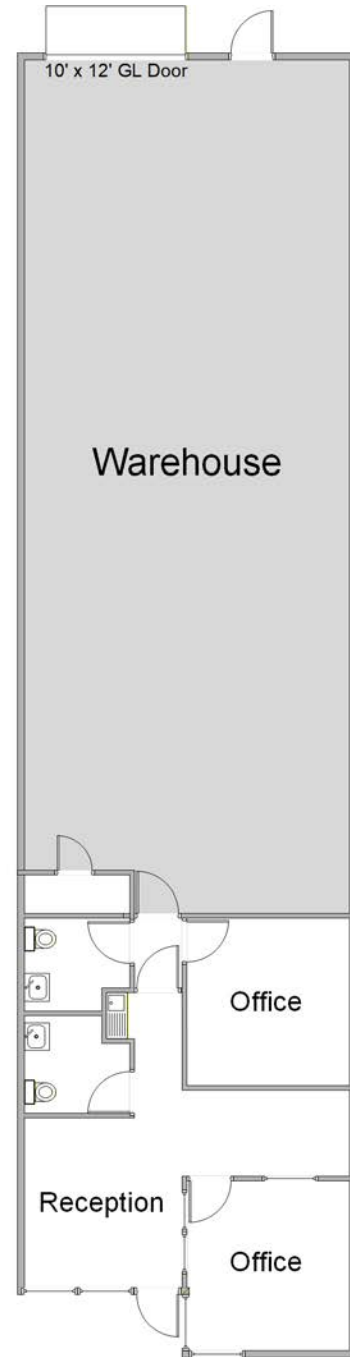
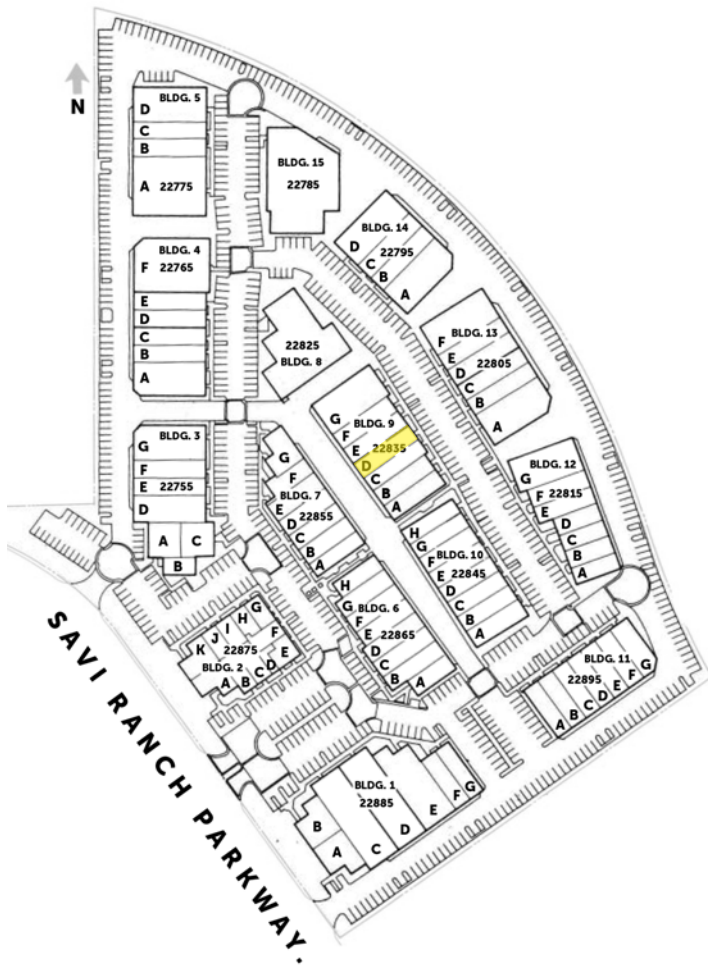
2,232 SF Industrial Unit

Unit Features

 Power: 100A | 120/208

 Clearance Height: 16'

 Ground Level Doors: One 10'x12'



*Floorplans Not to Scale

ANDREA BERUMEN
andrea@tricoREALTY.com
License #02174559

714-751-4420
TricoREALTY.com
License #00342120