

# BOONES CREEK OFFICE CONDO

119 Boone Ridge Drive  
Johnson City, TN 37615

## Location

Just off Boones Creek Road

## Available for Lease

Suite 301: 1,200 SF office condo  
\$17/SF/year NNN

## Highlights

Reception area, 3 offices, kitchenette and 2 restrooms

Lots of windows facing Boones Creek Road

Beautiful mountain views

Professional office setting

109 shared paved parking spaces

Zoned B-4: Planned Arterial Business District

Approx. 0.4 miles from I-26, exit 17

Proximal to shopping and dining

## Demographics

(2025 Est.)	3 mile	5 mile	10 mile
Population	23,065	54,850	169,901
Median HH Income	\$82,754	\$78,167	\$67,375
Median Age	43.3	44.6	41.9

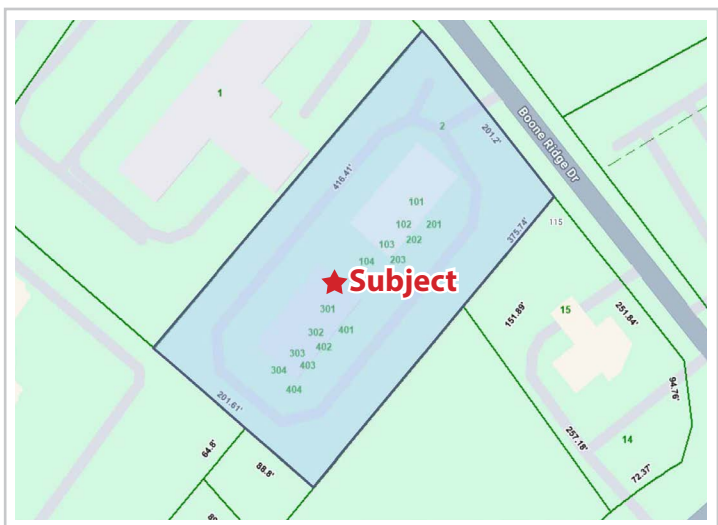
## Contact

**Shannon K. Castillo**

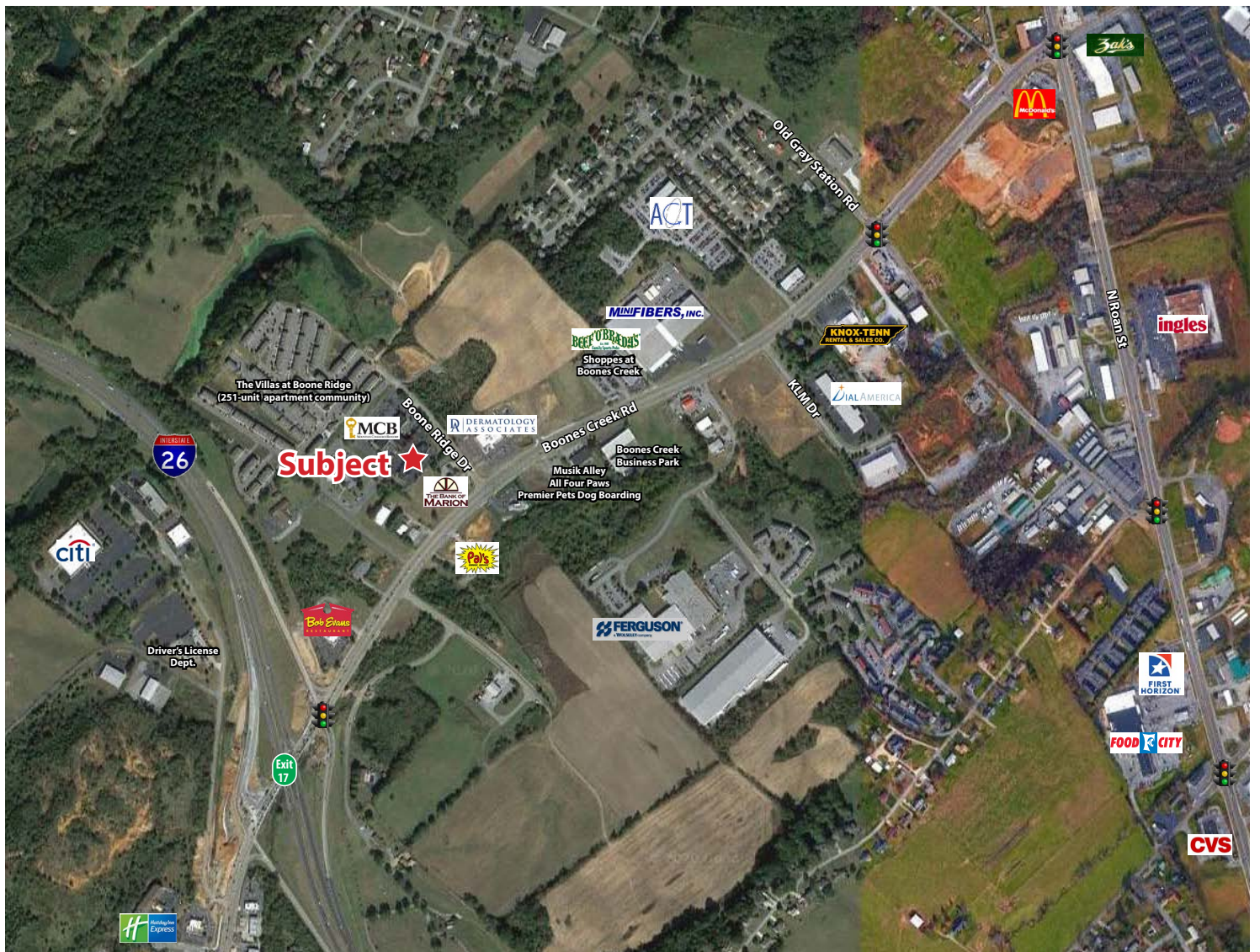
Broker

shannon@mitchcox.com

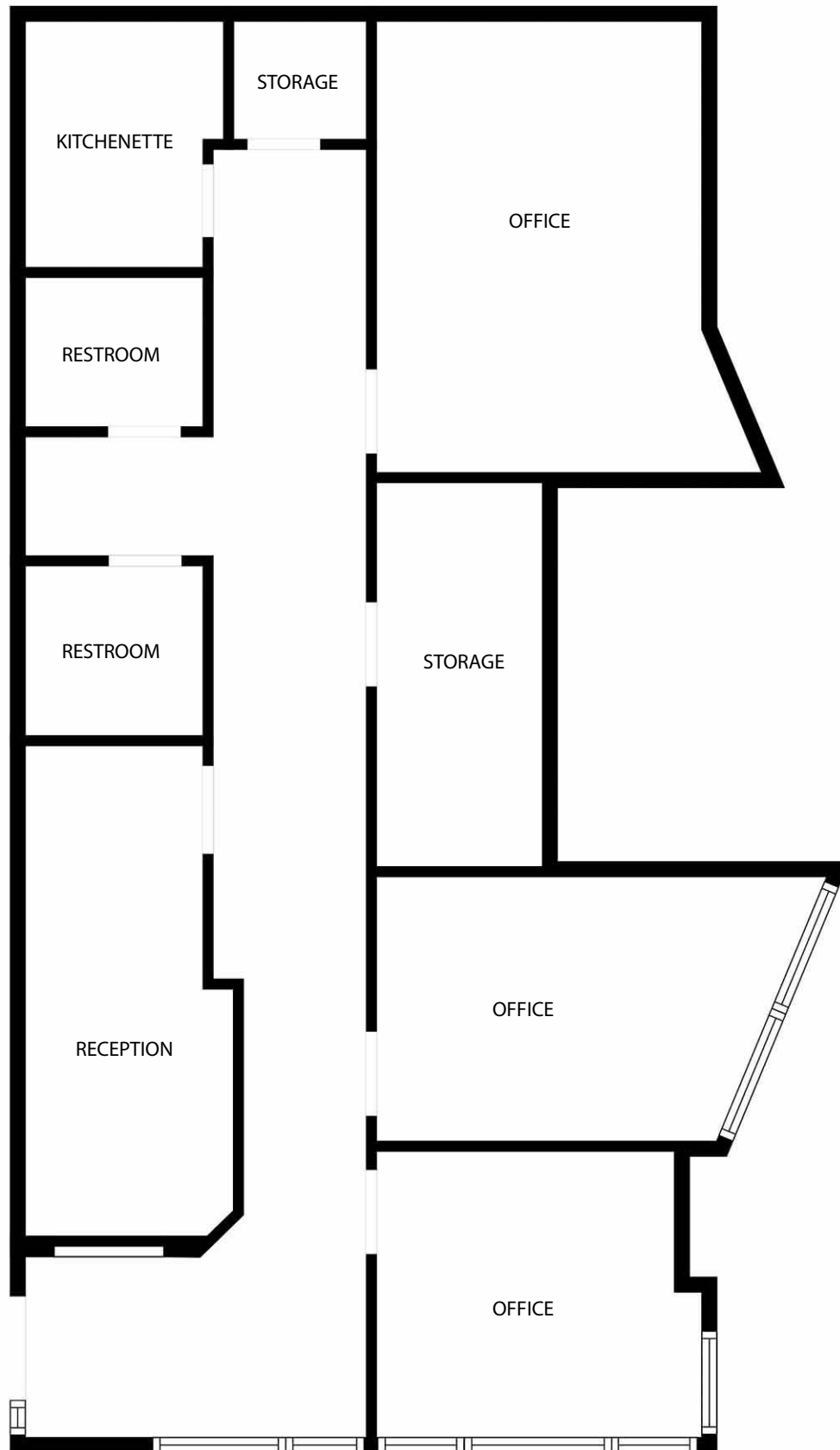
📞 423-282-6582 | 📠 423-282-5903  
www.mitchcox.com

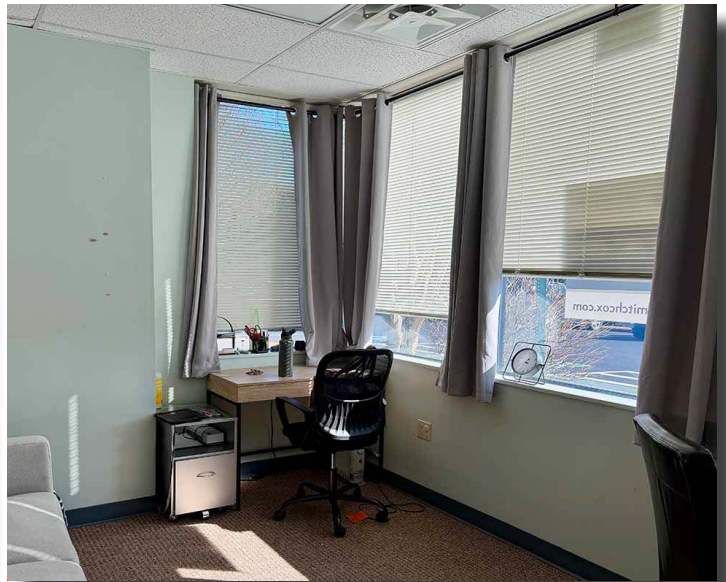












**MITCH COX**  
REALTOR, INC.

2304 Silverdale Drive, Suite 200, Johnson City, TN 37601  
423-282-6582 (o) 423-282-5903 (f) [www.mitchcox.com](http://www.mitchcox.com)