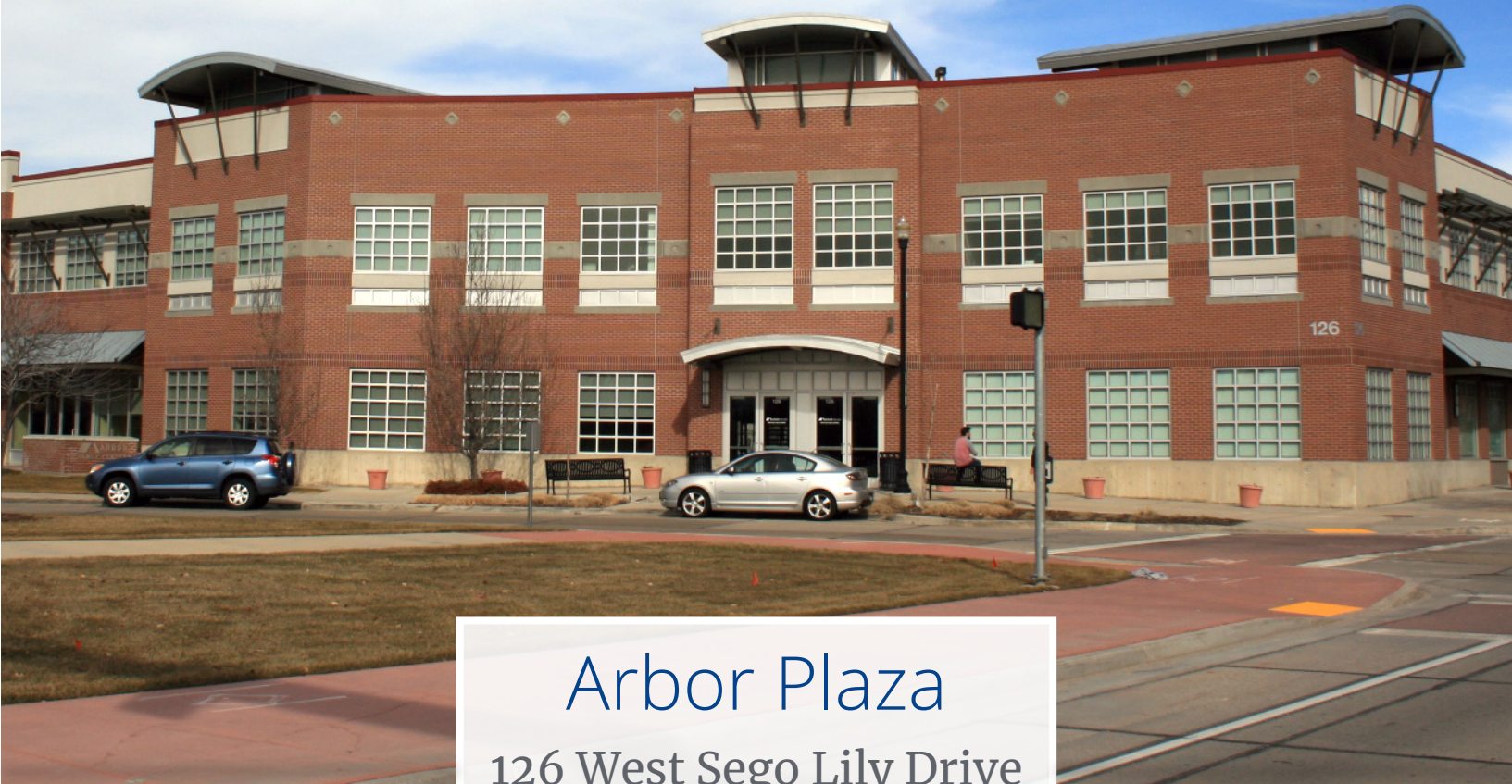




For Lease

4% to Tenant's Broker



Arbor Plaza
126 West Sego Lily Drive
Sandy, Utah



Greg Pavich
greg.pavich@colliers.com
801 947 8304



6440 South Millrock Drive, Suite 500 | Salt Lake City, Utah 84121 | 801.947.8300 phone | 801.947.8301 fax | www.colliers.com

6440 South Millrock Drive, Suite 500 | Salt Lake City, Utah 84121 | 801.947.8300 phone | 801.947.8301 fax | www.colliers.com
This document has been prepared by Colliers International for advertising and general information only. Colliers International makes no guarantees, representations or warranties of any kind, expressed or implied, regarding the information including, but not limited to, warranties of content, accuracy and reliability. Any interested party should undertake their own inquiries as to the accuracy of the information. Colliers International excludes unequivocally all inferred or implied terms, conditions and warranties arising out of this document and excludes all liability for loss and damages arising there from. This publication is the copyrighted property of Colliers International and/or its licensor(s). ©2021. All rights reserved.

Arbor Plaza

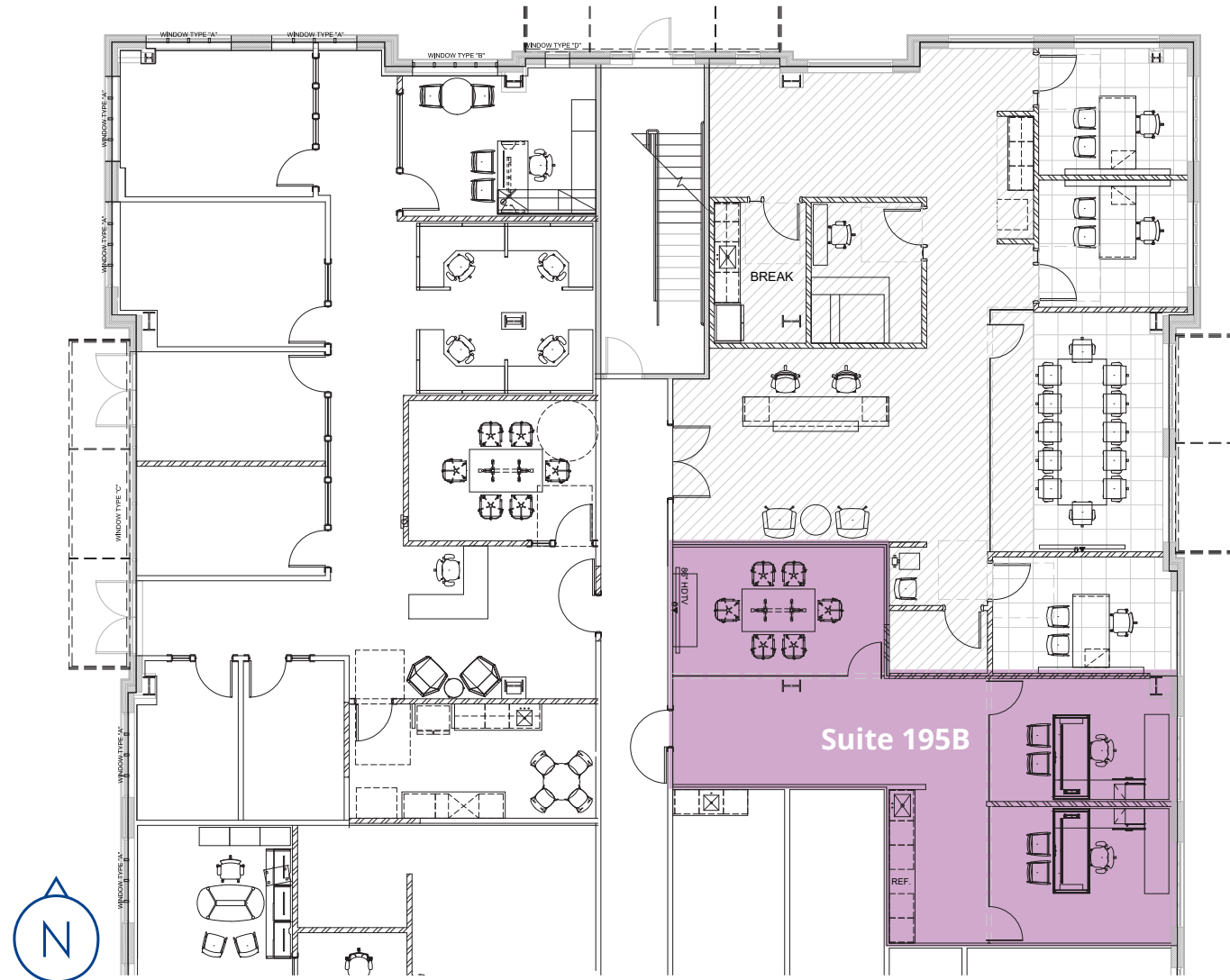
126 West Sego Lily Drive
Sandy, Utah



1st Floor

Lease Rate	\$25.50, FS
Building Size	69,900 RSF
Suite 195B	1,042 RSF

Suite 195B | 1,042 SF



- Class A Finishes
- Move-in ready
- Brand new build-out
- High visibility
- Located next to South Towne Mall and within minutes of numerous restaurants and retail amenities undergoing significant renovation
- Mass / Public Transit in close proximity to both UTA FrontRunner & TRAX Stations with service running in front of building to both stations (see aerial)
- In the heart of the Cairns Redevelopment Area within Sandy City (see insert aerial)
- The Cairns Project is the most significant redevelopment area along the Wasatch Front
- Easy access to I-15
- Fiber Connectivity:



Greg Pavich
greg.pavich@colliers.com
801 947 8304