

# OFFICE FOR LEASE



**GC**

REALTY & DEVELOPMENT, LLC.



**3,450 SF Available for Immediate Occupancy**

**400 W Lake St #200-206, Roselle, IL 60172**

Ian Pattison: (847) 650-3124 /// [ian@gcrealtyinc.com](mailto:ian@gcrealtyinc.com)

GC Realty & Development LLC 215 E. Irving Park Rd. Roselle IL 60172

*All information deemed accurate but not guaranteed.*

**Lease Price:    \$14/SF MG**



## **SUITE INFORMATION**

- **3,450 Total Square Feet Divisible to 975 SF, 1,130 SF, or 1,345 SF Units**
- **(7) Private Offices with Conference Room**
- **Break Room with Coffee Bar could be Additional Private Office**
- **Partially Open Layout Offers Flexible Set Up for Tenant**
- **Outstanding Window Line Provides Abundant Natural Light**

**Ian Pattison**

**(847) 650-3124**

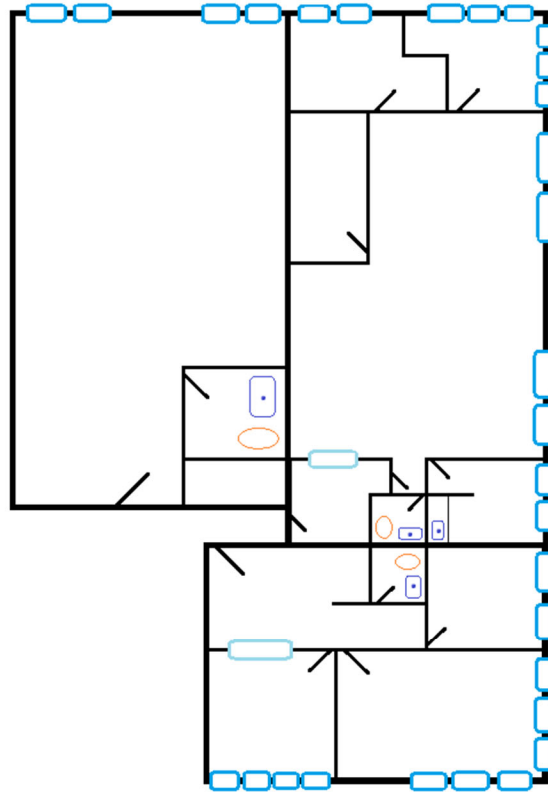
**ian@gcrealtyinc.com**

**gcrealtycommercial.com**

*GC Realty & Development LLC*

*215 E. Irving Park Rd. Roselle IL 60172*

Lease Price: **\$14/SF MG**



Ian Pattison

(847) 650-3124

ian@gcrealtyinc.com

gcrealtycommercial.com

GC Realty & Development LLC

215 E. Irving Park Rd. Roselle IL 60172