



## 3320 S Pennsylvania Ave

Lansing, Michigan 48910

### Property Highlights

- 1,500 SF of Office or Retail
- Turnkey setup for Daycare
- Road pylon sign available
- Ample parking
- Excellent visibility on Pennsylvania Ave

### Offering Summary

Lease Rate:	\$14.00 SF/yr (MG)
Building Size:	1,500 SF
Available SF:	1,500 SF
Lot Size:	7,111 SF

### For More Information

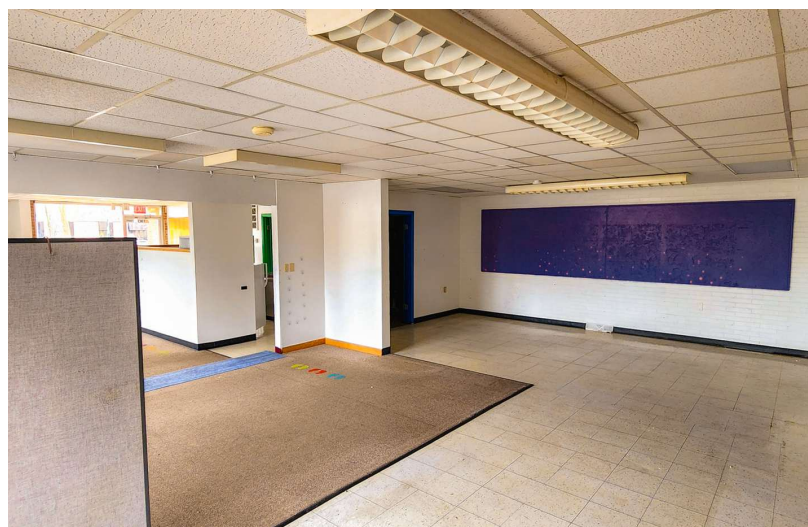
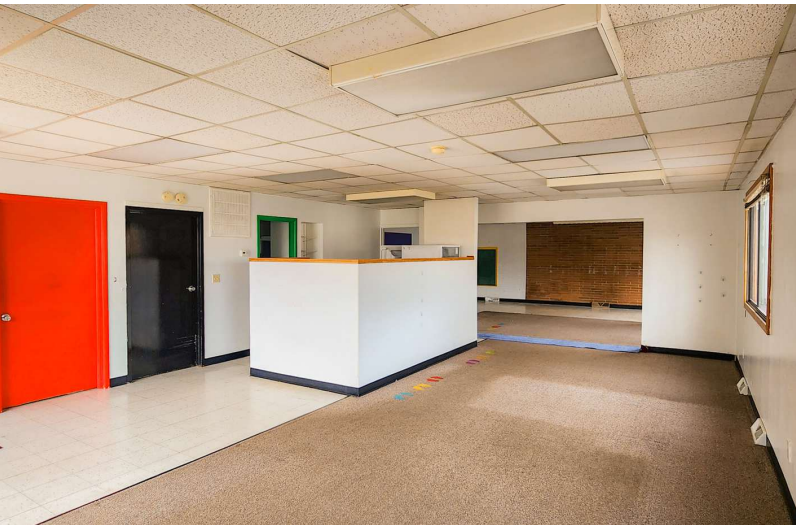


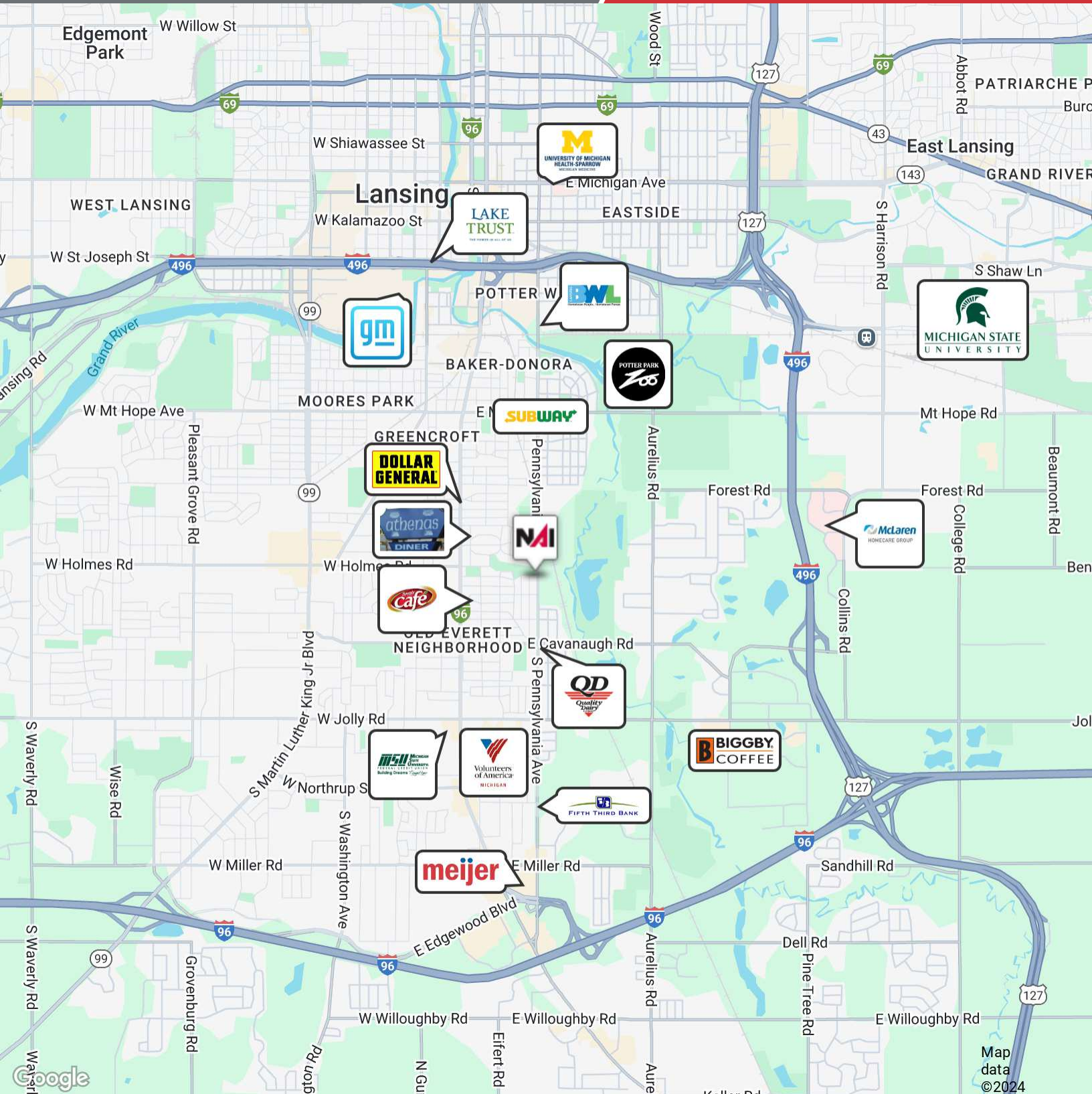
#### Jeffrey Branch

Commercial Advisor

O: 517 487 9222 | C: 517 899 6368

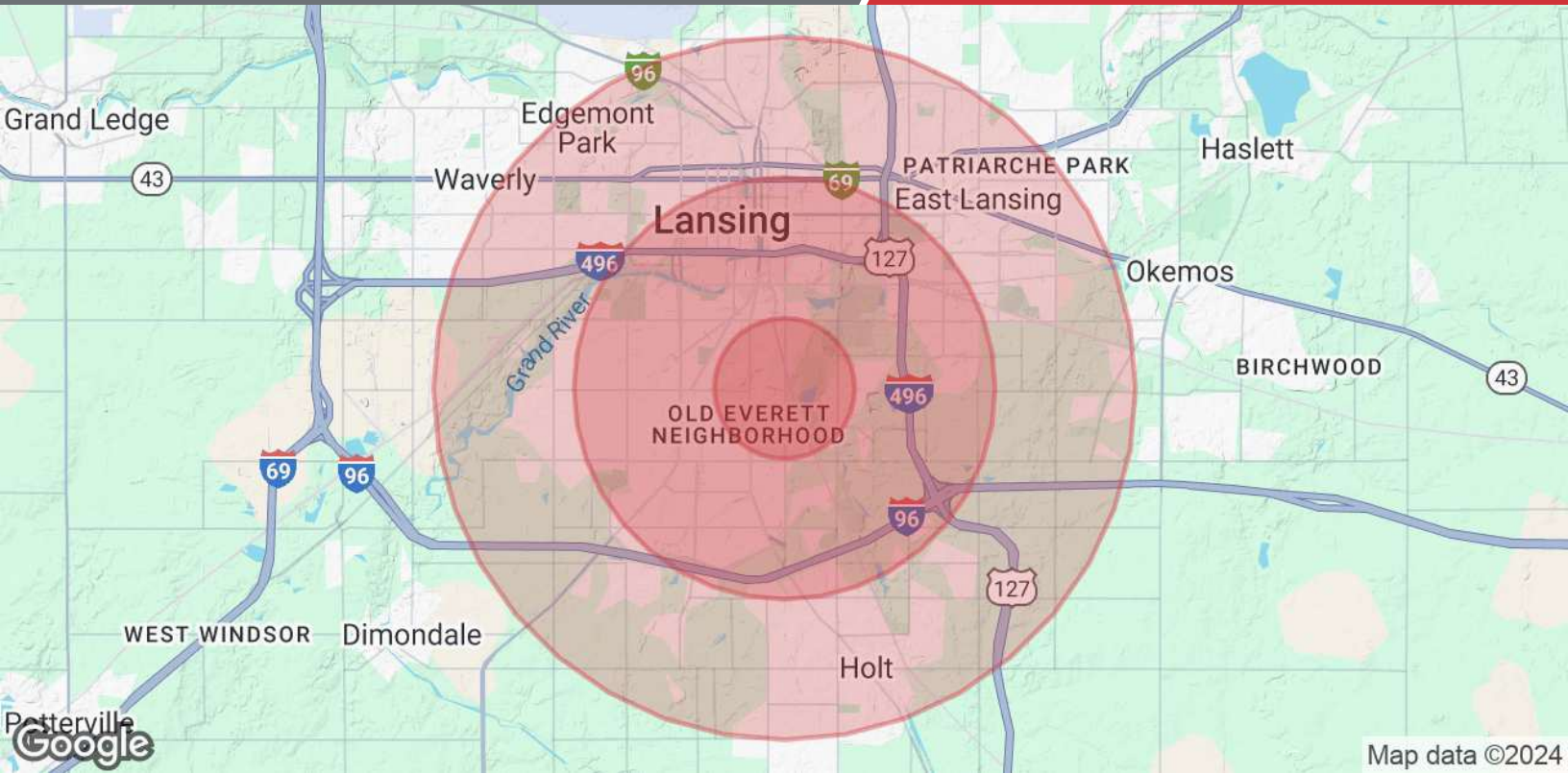
[jbranch@naimidmichigan.com](mailto:jbranch@naimidmichigan.com)





NO WARRANTY OR REPRESENTATION, EXPRESS OR IMPLIED, IS MADE AS TO THE ACCURACY OF THE INFORMATION CONTAINED HEREIN, AND THE SAME IS SUBMITTED SUBJECT TO ERRORS, OMISSIONS, CHANGE OF PRICE, RENTAL OR OTHER CONDITIONS, PRIOR SALE, LEASE OR FINANCING, OR WITHDRAWAL WITHOUT NOTICE, AND OF ANY SPECIAL LISTING CONDITIONS IMPOSED BY OUR PRINCIPALS NO WARRANTIES OR REPRESENTATIONS ARE MADE AS TO THE CONDITION OF THE PROPERTY OR ANY HAZARDS CONTAINED THEREIN ARE INTENDED TO BE IMPLIED

2149 Jolly Road, Suite 200  
 Okemos, MI 48864  
 517 487 9222 tel  
 naimidmichigan.com



<b>Population</b>	<b>1 Mile</b>	<b>3 Miles</b>	<b>5 Miles</b>
Total Population	10,050	79,604	202,114
Average Age	40	37	36
Average Age (Male)	38	36	36
Average Age (Female)	41	38	37
<b>Households &amp; Income</b>	<b>1 Mile</b>	<b>3 Miles</b>	<b>5 Miles</b>
Total Households	4,555	35,079	83,239
# of Persons per HH	2.2	2.3	2.4
Average HH Income	\$65,920	\$64,081	\$74,199
Average House Value	\$116,963	\$136,569	\$174,113

Demographics data derived from AlphaMap