

MSP Corporate Center

1295 Northland Dr, Mendota Heights, MN 55120

Sublease Details

- + Available Space: 3rd Floor - 10,819 SF
- + Term Through: February 28, 2026
- + Rental Rate: Negotiable
- + Furniture: Available/Negotiable

Space Details

- + 42 Cubes
- + 10 Private Offices
- + 3 Conference Rooms
- + 1 Boardroom
- + 1 Large Training Room
with small Storage Room
- + Lounge
- + Kitchen
- + Wellness Room
- + Server Room
- + Storage Room
- + Reception Area



MSP Corporate Center
1295 Northland Dr, Mendota Heights, MN 55120

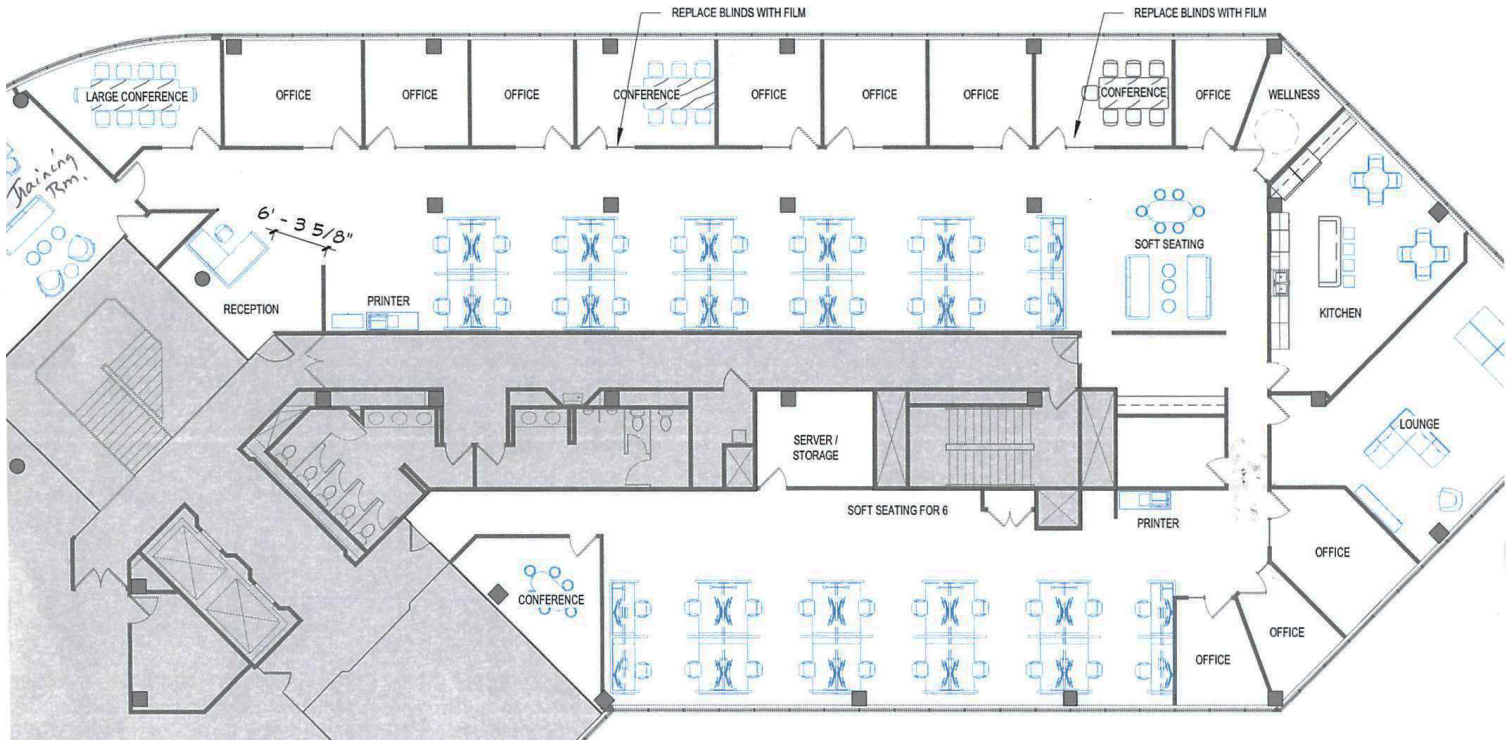
For Sublease

Photos



Floor Plan

3rd Floor | 10,819 SF



Contact Us

John Lorence

Executive Vice President
+1 612 336 4217
john.lorence@cbre.com

© 2023 CBRE, Inc. All rights reserved. This information has been obtained from sources believed reliable, but has not been verified for accuracy or completeness. You should conduct a careful, independent investigation of the property and verify all information. Any reliance on this information is solely at your own risk. CBRE and the CBRE logo are service marks of CBRE, Inc. All other marks displayed on this document are the property of their respective owners, and the use of such logos does not imply any affiliation with or endorsement of CBRE. Photos herein are the property of their respective owners. Use of these images without the express written consent of the owner is prohibited.