

# FLEX FOR LEASE 301 - 303 NAJOLES ROAD

Millersville, MD 21108

Available: 1,200 - 5,625 SF

**LEE & ASSOCIATES**  
COMMERCIAL REAL ESTATE SERVICES



## LISTING DATA

**AVAILABLE SF:** 1,200 - 5,625 SF

## PROPERTY INFORMATION

**COUNTY:** Anne Arundel

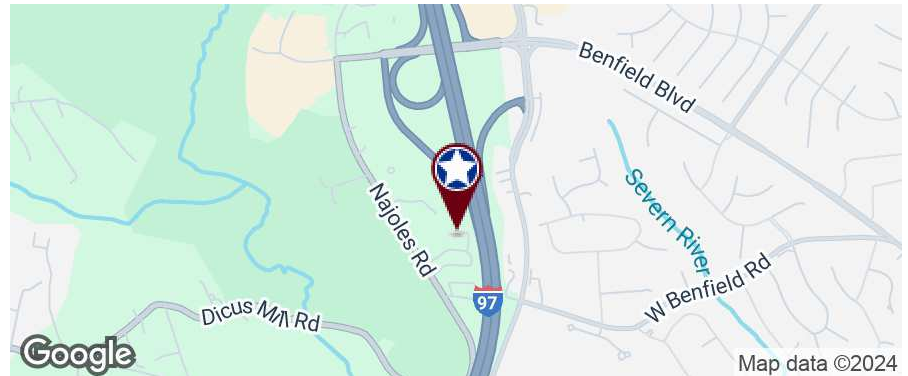
## BUILDING DATA

**YEAR BUILT:** 1989

**ZONING:** W1

## PROPERTY HIGHLIGHTS

- Located in Millersville off of Najoles Road
- Immediate access to I-97
- Close proximity to RT. 32, RT. 3 and BWI
- New roof 2020



## AVAILABLE SPACES

SPACE	LEASE RATE	SIZE (SF)
301 Najoles	\$14.00 SF/yr	5,625 SF
303 Najoles - Ste 106	\$14.00 SF/yr	1,200 SF
303 Najoles - Suite 107	\$14.00 SF/yr	2,880 SF

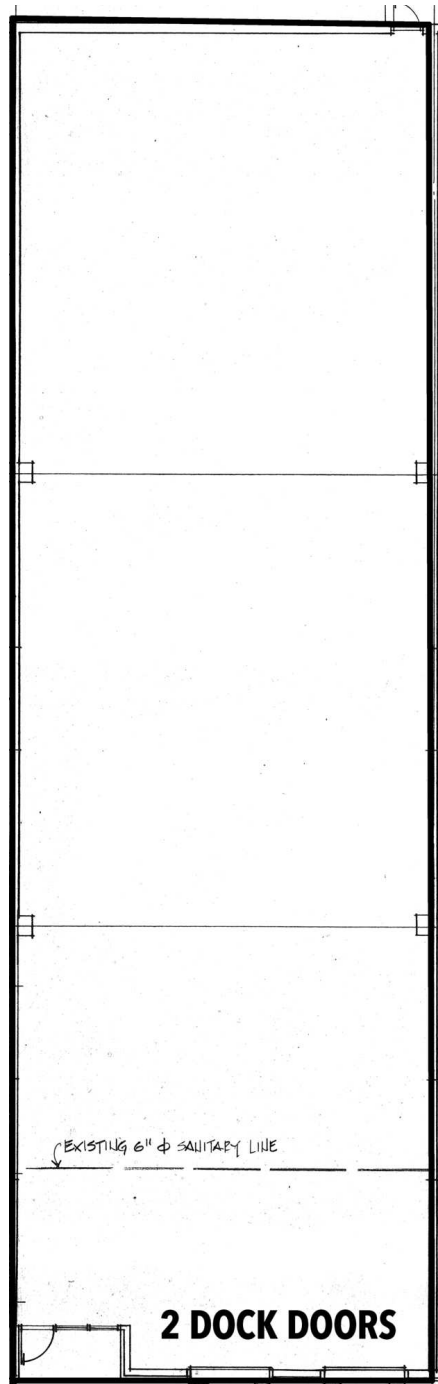
**Kate Jordan, SIOR**  
Principal  
410.336.5314  
kjordan@lee-associates.com

**Marley Black, SIOR**  
Principal  
443.741.4050  
mwelsh@lee-associates.com

All information furnished regarding property for sale, rental or financing is from sources deemed reliable, but no warranty or representation is made to the accuracy thereof and same is submitted to errors, omissions, change of price, rental or other conditions prior to sale, lease or financing or withdrawal without notice. No liability of any kind is to be imposed on the broker herein.

**FLEX FOR LEASE**  
**301 - 303 NAJOLAS ROAD**

Millersville, MD 21108  
Available: 1,200 - 5,625 SF



301 Najoles - Suite 205 | 5,625 SF | 2 Docks | Shell Space | 18' Clear

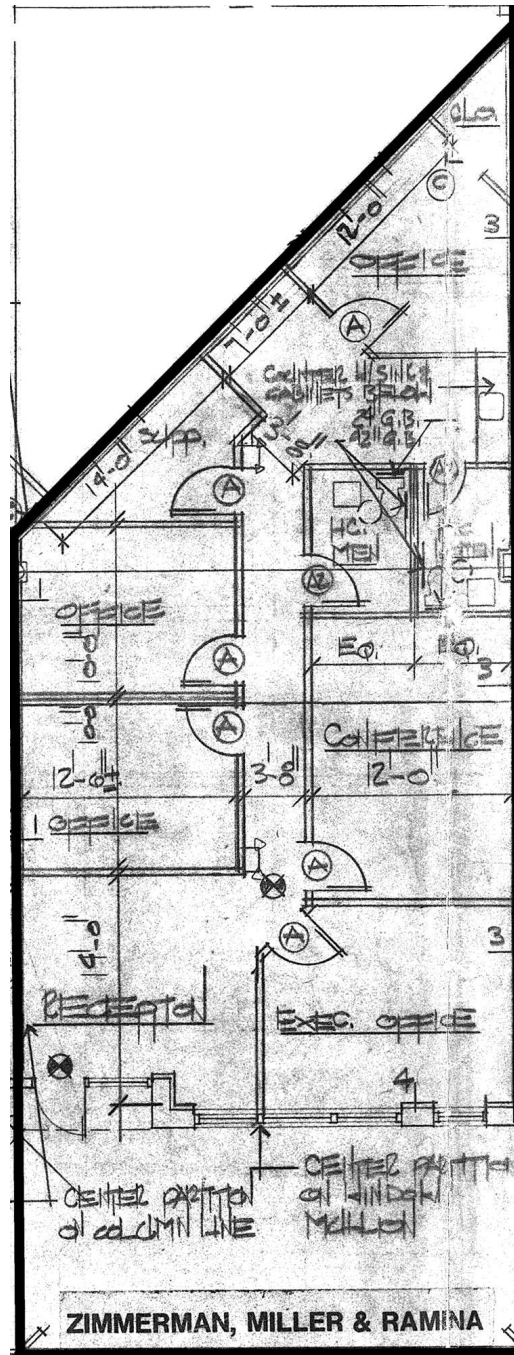
**Kate Jordan, SIOR**  
Principal  
410.336.5314  
kjordan@lee-associates.com

**Marley Black, SIOR**  
Principal  
443.741.4050  
mwelsh@lee-associates.com

All information furnished regarding property for sale, rental or financing is from sources deemed reliable, but no warranty or representation is made to the accuracy thereof and same is submitted to errors, omissions, change of price, rental or other conditions prior to sale, lease or financing or withdrawal without notice. No liability of any kind is to be imposed on the broker herein.

**FLEX FOR LEASE**  
**301 - 303 NAJOLES ROAD**

Millersville, MD 21108  
Available: 1,200 - 5,625 SF



303 Najoles - Suite 106 | 1,200 SF | Office

**Kate Jordan, SIOR**  
Principal  
410.336.5314  
kjordan@lee-associates.com

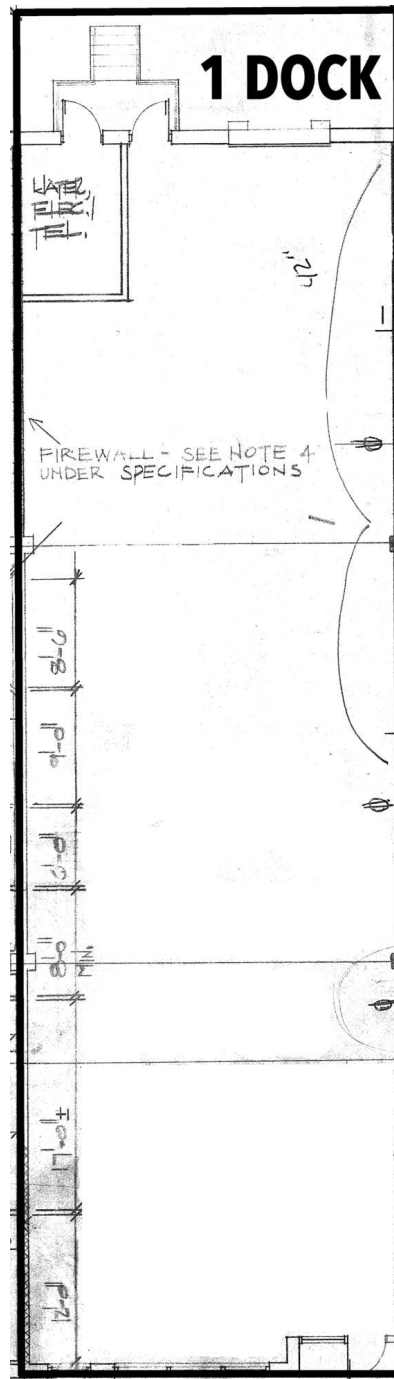
**Marley Black, SIOR**  
Principal  
443.741.4050  
mwelsh@lee-associates.com

All information furnished regarding property for sale, rental or financing is from sources deemed reliable, but no warranty or representation is made to the accuracy thereof and same is submitted to errors, omissions, change of price, rental or other conditions prior to sale, lease or financing or withdrawal without notice. No liability of any kind is to be imposed on the broker herein.



**FLEX FOR LEASE**  
**301 - 303 NAJOL'S ROAD**

Millersville, MD 21108  
Available: 1,200 - 5,625 SF



303 Najoles - Suite 107 | 2,880 SF | Shell Warehouse | 1 Dock

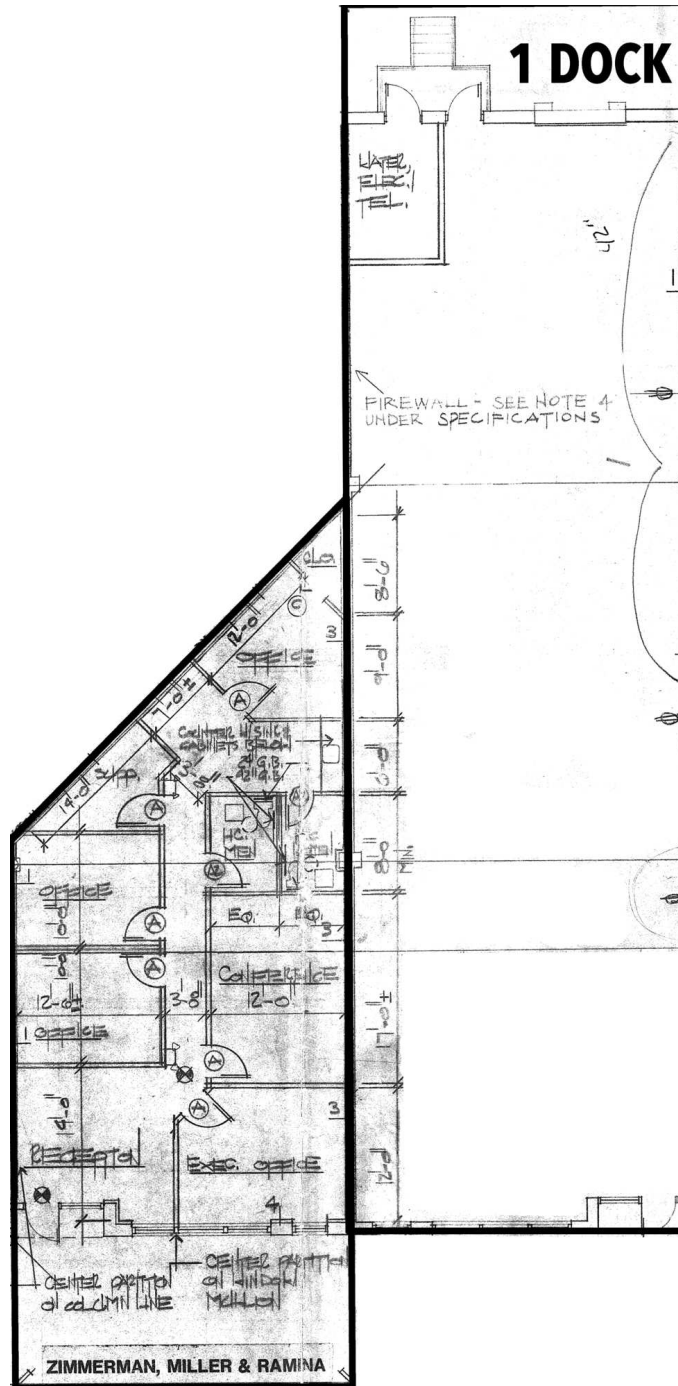
**Kate Jordan, SIOR**  
Principal  
410.336.5314  
kjordan@lee-associates.com

**Marley Black, SIOR**  
Principal  
443.741.4050  
mwelsh@lee-associates.com

All information furnished regarding property for sale, rental or financing is from sources deemed reliable, but no warranty or representation is made to the accuracy thereof and same is submitted to errors, omissions, change of price, rental or other conditions prior to sale, lease or financing or withdrawal without notice. No liability of any kind is to be imposed on the broker herein.

FLEX FOR LEASE  
**301 - 303 NAJOLES ROAD**

Millersville, MD 21108  
Available: 1,200 - 5,625 SF



303 Najoles - Suite 106 & Suite 107 | Warehouse & Office | 4,080 SF Combined

**Kate Jordan, SIOR**  
Principal  
410.336.5314  
kjordan@lee-associates.com

**Marley Black, SIOR**  
Principal  
443.741.4050  
mwelsh@lee-associates.com

All information furnished regarding property for sale, rental or financing is from sources deemed reliable, but no warranty or representation is made to the accuracy thereof and same is submitted to errors, omissions, change of price, rental or other conditions prior to sale, lease or financing or withdrawal without notice. No liability of any kind is to be imposed on the broker herein.