

Office | For Lease

CBRE

Northpointe Business Park

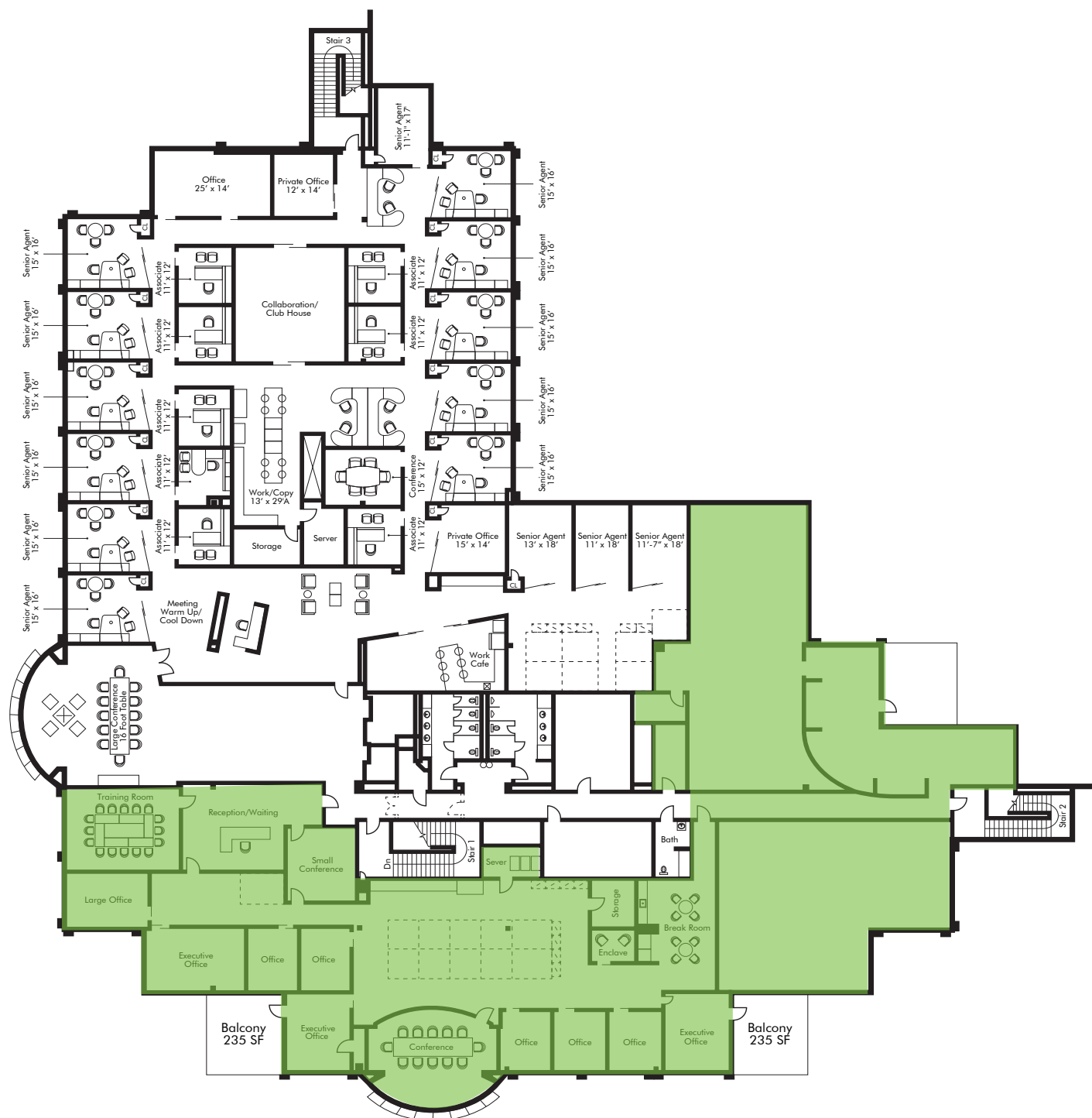
Building C

825 East 1180 South
American Fork, UT 84003
www.cbre.com/slc

Office Space Available in a Great American Fork Location



Floor Plan

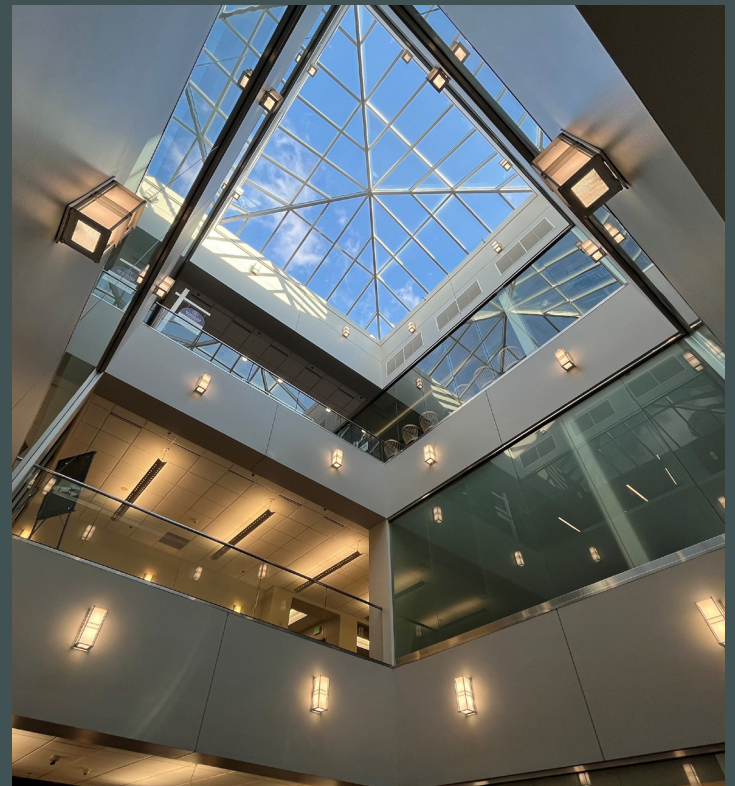


For Lease

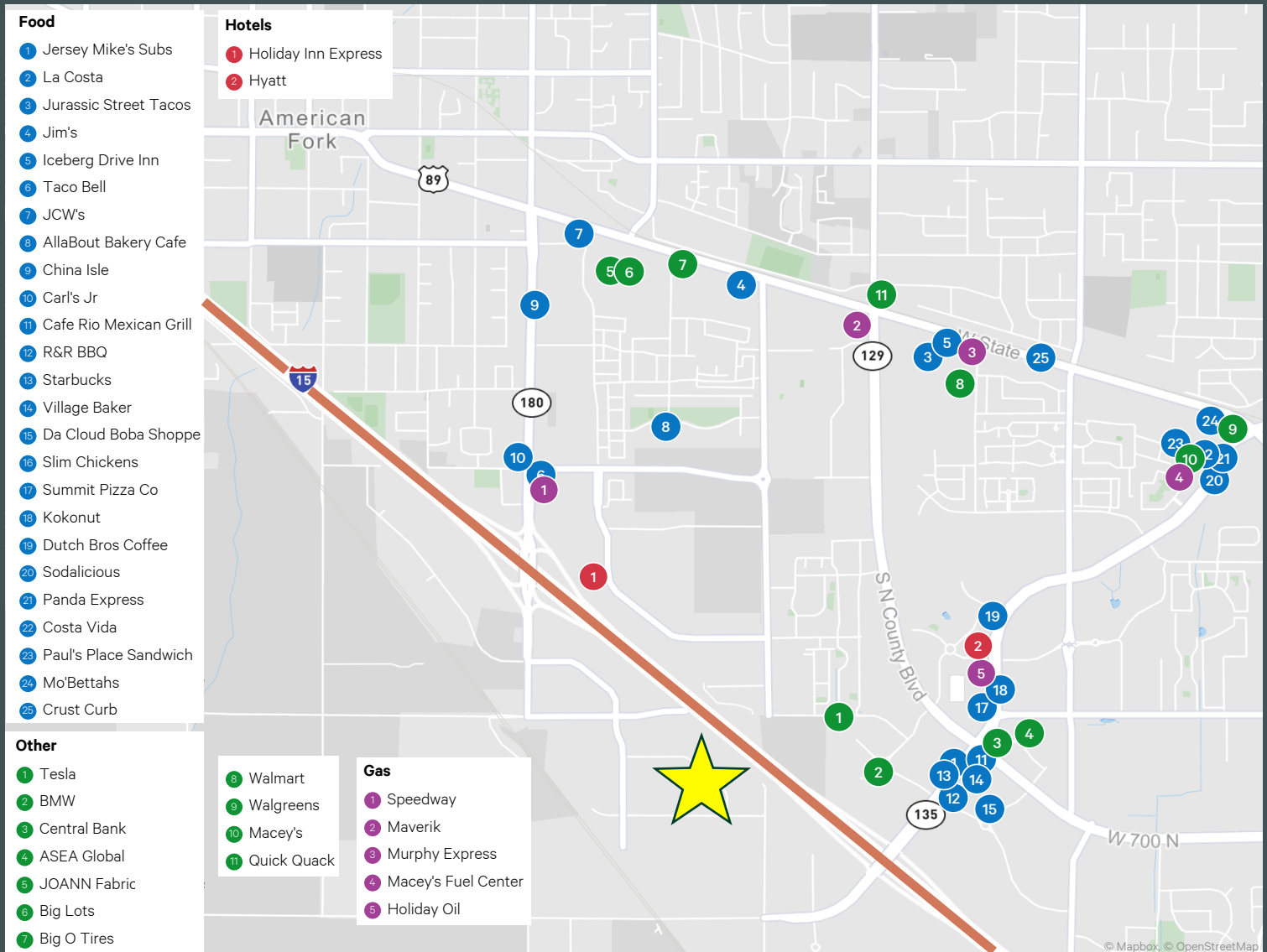
Property Features

THIRD FLOOR OPPORTUNITY

- Available Space:
 - 12,094 RSF (Demisable)
- Easy access to I-15
- Great freeway visibility
- Excellent views
- Close to many amenities
- 3.5mi from FrontRunner Station
- Parking: 5/1,000
- Lease Rate: \$22.50/RSF, Full Service



Amenity Map



Contact Us

Eric Smith

Senior Vice President
+1 801 869 8008
eric.smith@cbre.com

Kreg Peterson

First Vice President
+1 801 869 8092
kreg.peterson@cbre.com

Laurie Adair

Vice President
+1 801 869 8009
laurie.adair@cbre.com

© 2021 CBRE, Inc. All rights reserved. This information has been obtained from sources believed reliable, but has not been verified for accuracy or completeness. You should conduct a careful, independent investigation of the property and verify all information. Any reliance on this information is solely at your own risk. CBRE and the CBRE logo are service marks of CBRE, Inc. All other marks displayed on this document are the property of their respective owners, and the use of such logos does not imply any affiliation with or endorsement of CBRE. Photos herein are the property of their respective owners. Use of these images without the express written consent of the owner is prohibited.