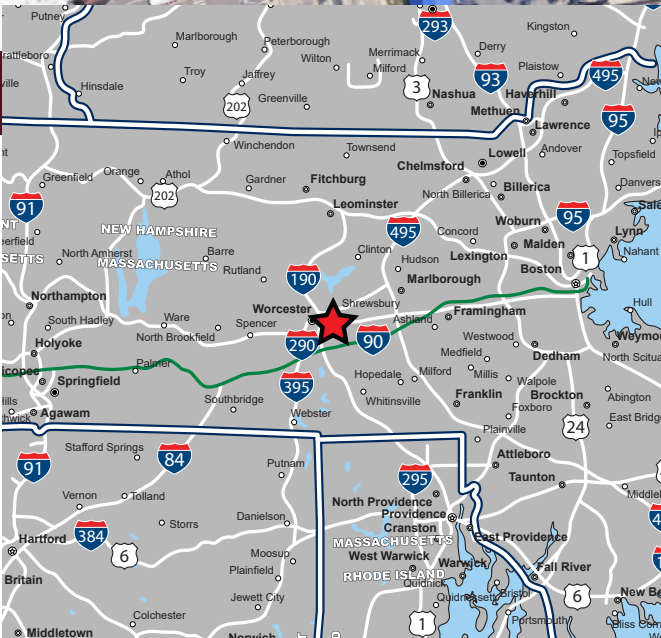


# RETAIL/MEDICAL SPACE

77 Boston Turnpike (Route 9), Shrewsbury, Massachusetts



AVAILABLE FOR LEASE

## PROPERTY HIGHLIGHTS

- » 3,074 SF & 6,895 SF Available
- » Join Trader Joe's, Total Wine, Chipotle, & More
- » Located Along Heavily Traveled Rt. 9 (35,375 ADT)
- » Left Turn Ingress/Egress from Rt. 9
- » Regional Trade Area with Access to High Income Communities and Dense Population

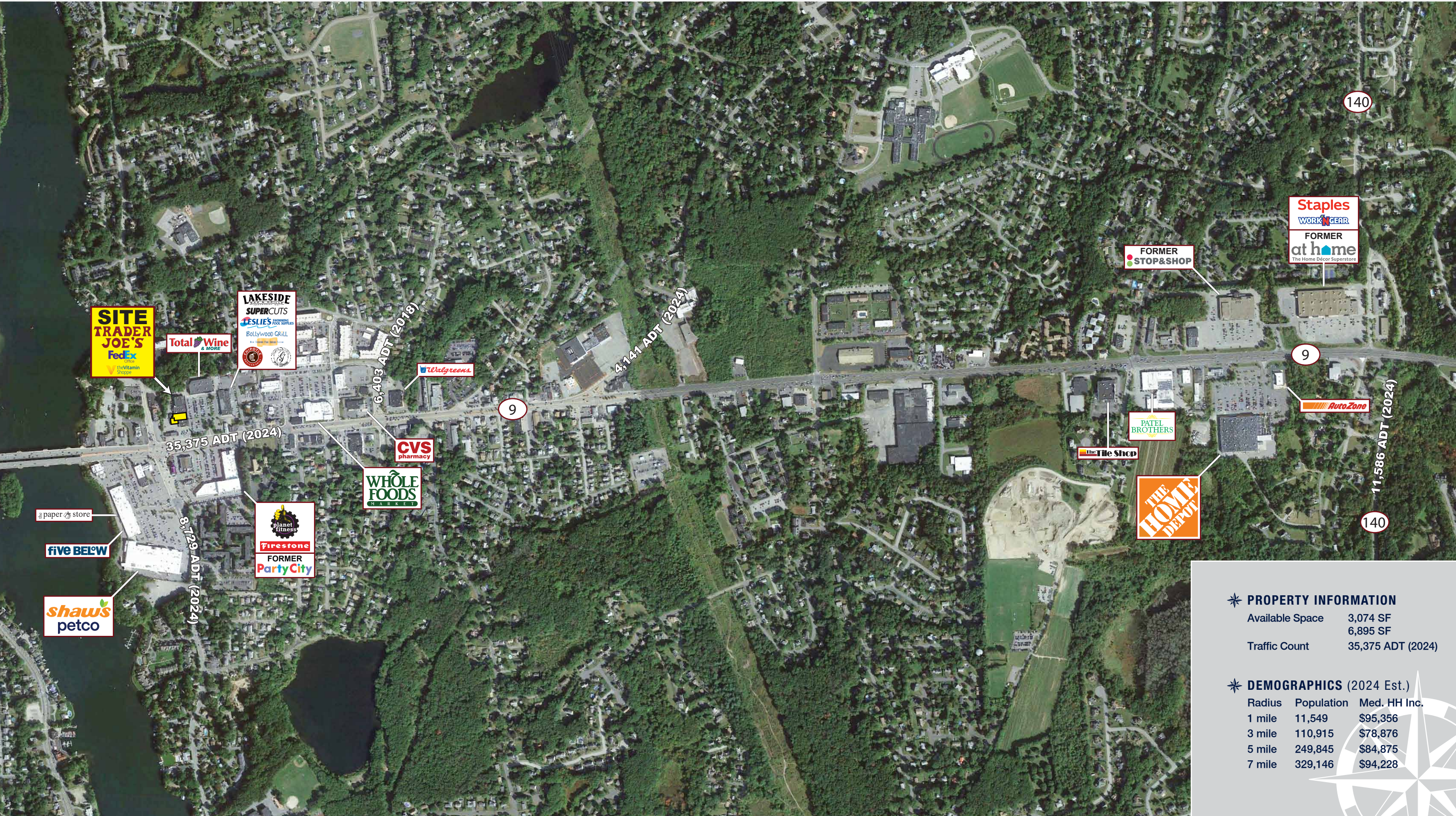


# RETAIL/MEDICAL SPACE

77 Boston Turnpike (Route 9), Shrewsbury, Massachusetts



**EASTERN**  
RETAIL PROPERTIES



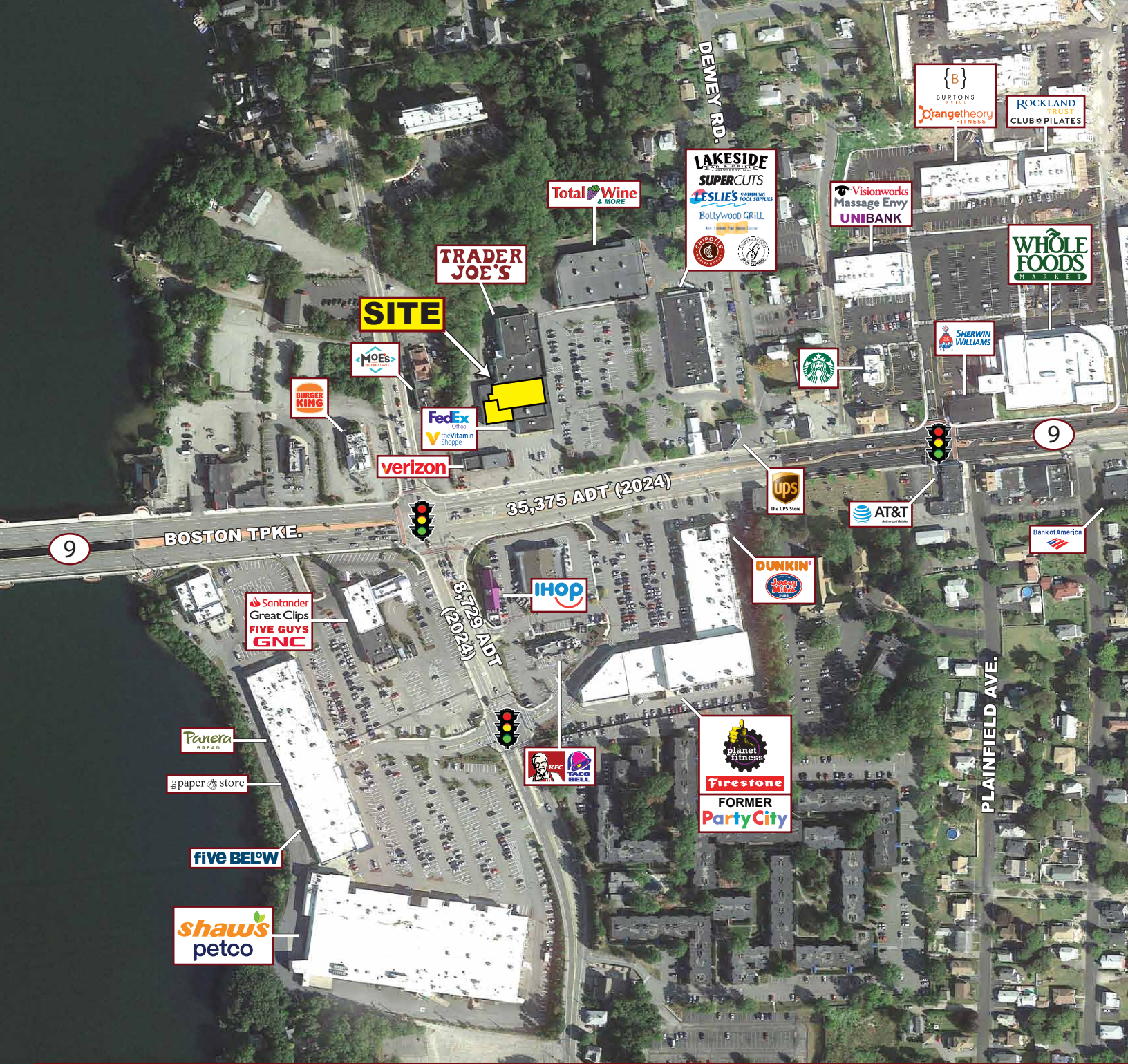
## PROPERTY INFORMATION

Available Space	3,074 SF
	6,895 SF
Traffic Count	35,375 ADT (2024)

## DEMOGRAPHICS (2024 Est.)

Radius	Population	Med. HH Inc.
1 mile	11,549	\$95,356
3 mile	110,915	\$78,876
5 mile	249,845	\$84,875
7 mile	329,146	\$94,228





## Retail/Medical Space - 77 Boston Turnpike (Route 9), Shrewsbury, MA



**EASTERN**  
RETAIL PROPERTIES

FOR MORE INFORMATION CONTACT:

**Vin Albanese**

781.849.9013 (Office) + 617.413.1193 (Cell)

valbanese@easternretail.com

**Sam Peterson**

781.849.9016

speterson@easternretail.com

P 781.849.9010 + F 781.849.9050 + [www.easternretail.com](http://www.easternretail.com) + 25 Braintree Hill Office Park, Suite 404 + Braintree, MA 02184

The information above has been obtained from sources believed reliable. While we do not doubt its accuracy, we have not verified it and make no guarantee, warranty or representation about it. It is your responsibility to independently confirm its accuracy and completeness. Any projections, opinions, assumptions or estimates used are for example only and do not represent the current or future performance of the property. The value of this transaction to you depends on tax and other factors, which should be evaluated by your tax and financial advisors. You and your advisors should conduct a careful, independent investigation of the property to determine to your satisfaction, the suitability of the property for your needs.