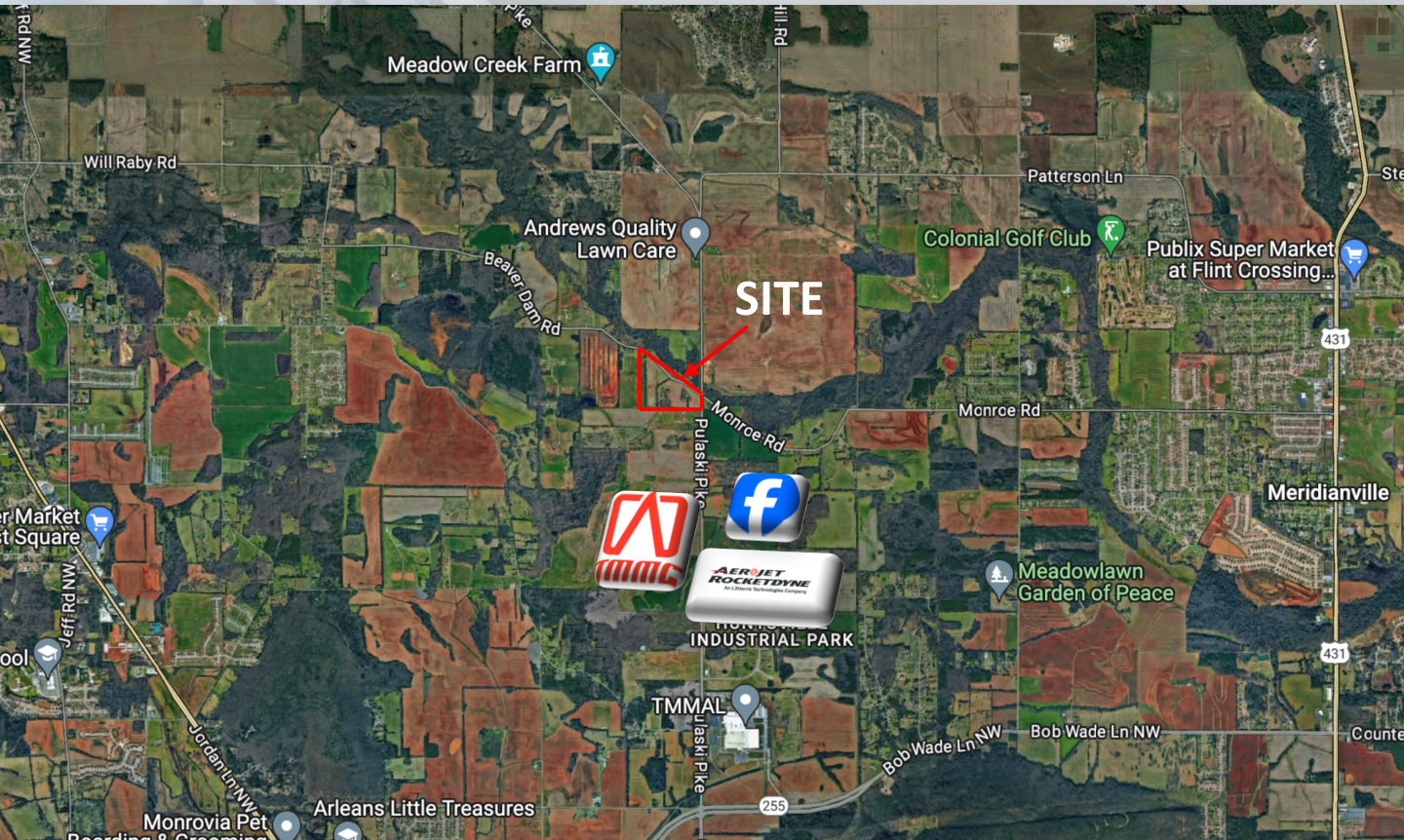




16 ACRES FOR SALE – Corner of Pulaski and Beaver Dam

150 Beaver Dam Road, Toney, AL 35773



PROPERTY HIGHLIGHTS

- 12 Miles from downtown
- 15 Miles from I-565
- Great visibility and development opportunity
- All utilities and sewer available
- CALL FOR PRICING

Jonathan Taylor
(256) 532-1250

jtaylor@concoursegroup.com

CONCOURSE GROUP

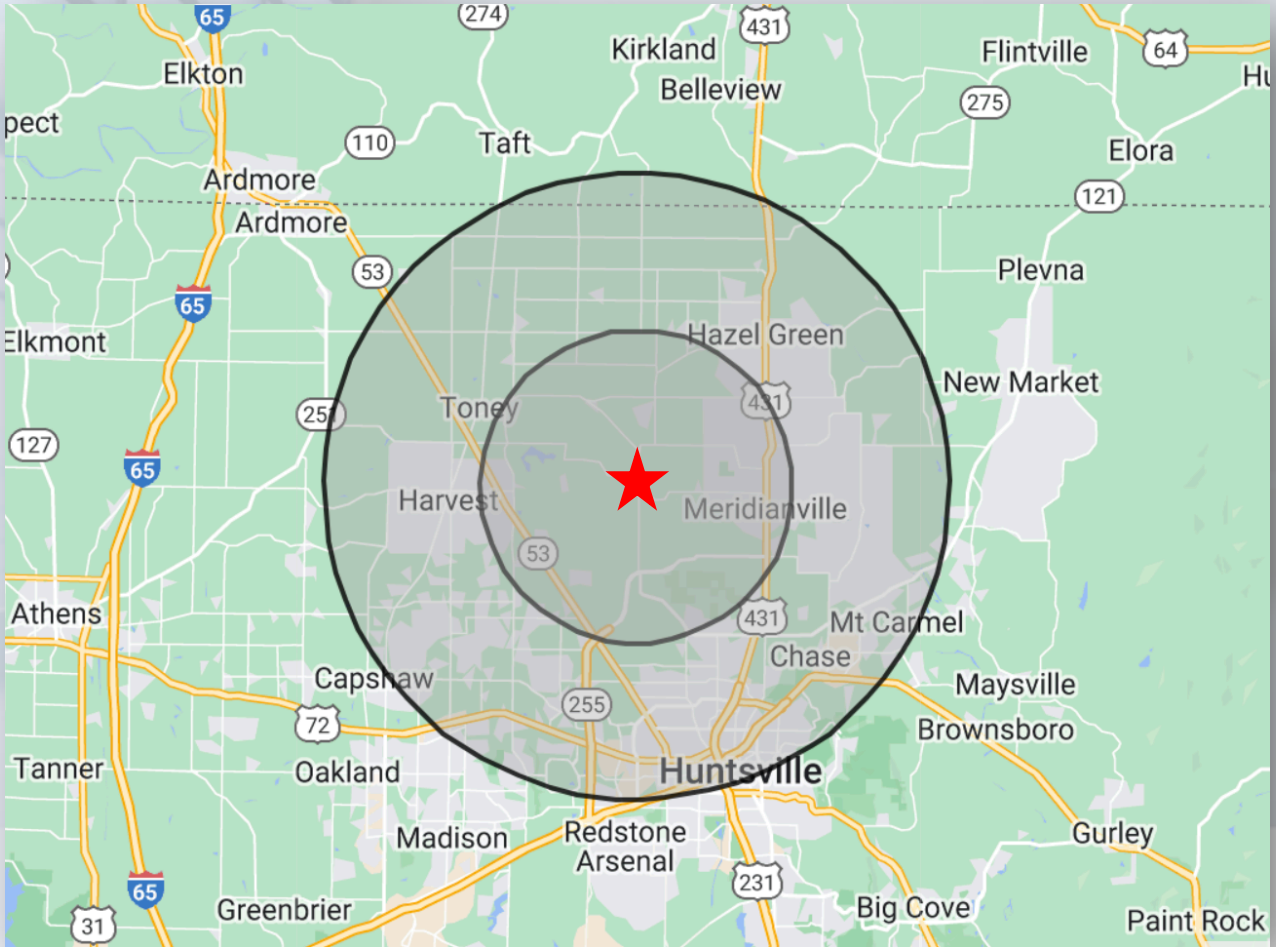
Commercial Real Estate Services

Competent, Creative, Committed. ®





Demographics



5 MILE

Population	27,840
Households	10,641
Families	7,866
Average Household Size	2.62
Median Age	40.8
Median Household Income	\$78,456
Average Household Income	\$101,249

10 MILE

Population	210,578
Households	85,093
Families	54,952
Average Household Size	2.37
Median Age	38.1
Median Household Income	\$66,744
Average Household Income	\$91,440