

WAREHOUSE SPACE  
FOR SUBLEASE

1925 Pike Road

LONGMONT, CO 80501

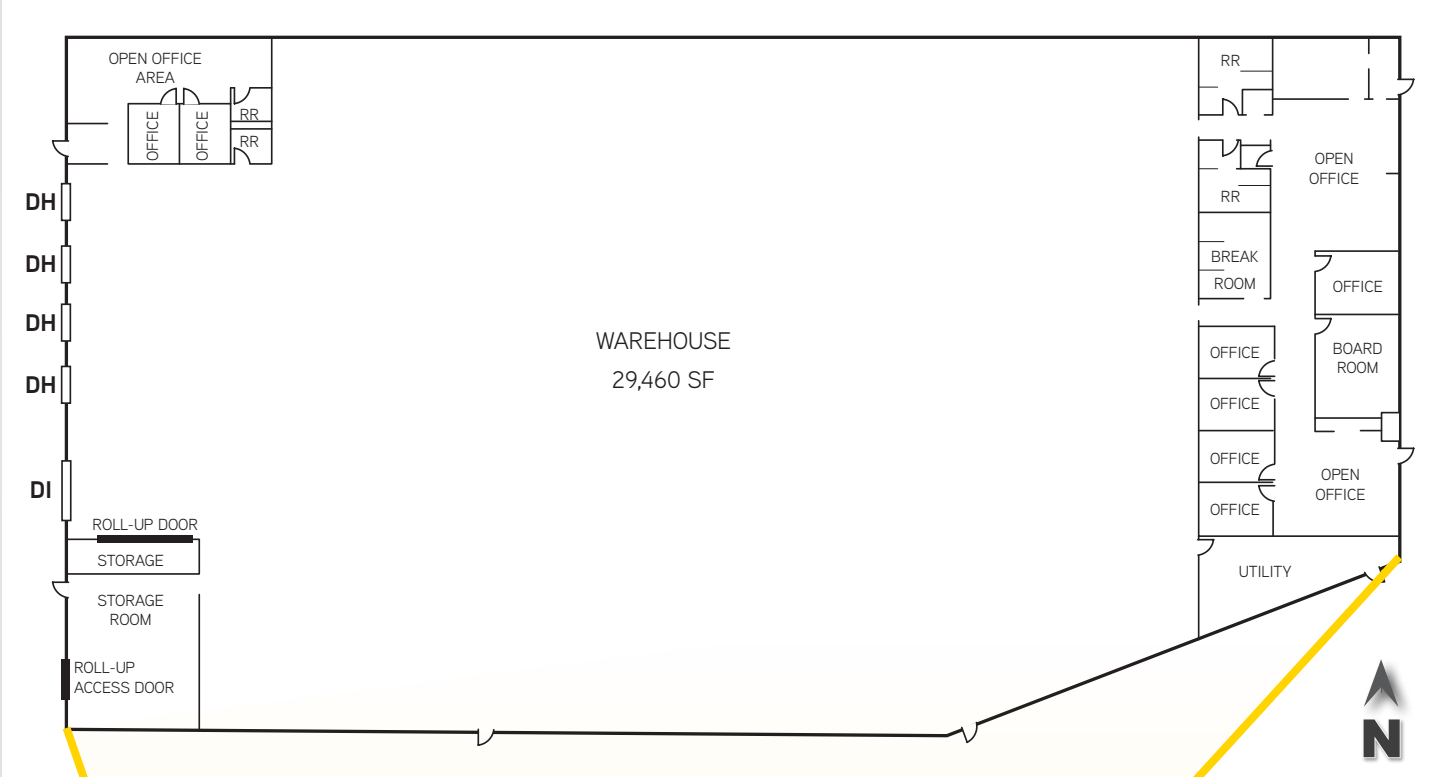


## Building Information

- > Available: 38,843 SF
- > Office: 2,950 SF
- > Loading: Four (4) Dock High Doors  
Two (2) Drive-In Doors (12'x14')
- > Clear Height: 36'-40'
- > YOC: 2000
- > Power: 1,200Amps/480Volt/3-Phase (TBV)
- > Sprinklered: Yes (ESFR)
- > Lease Rate: \$14.97/SF NNN
- > Operating Expenses: \$4.97/SF

## Highlights

- > One of Boulder County's few high-clear Class A distribution options
- > High efficiency lighting
- > Skylights
- > Sublease term through 9/14/2032, shorter term possible

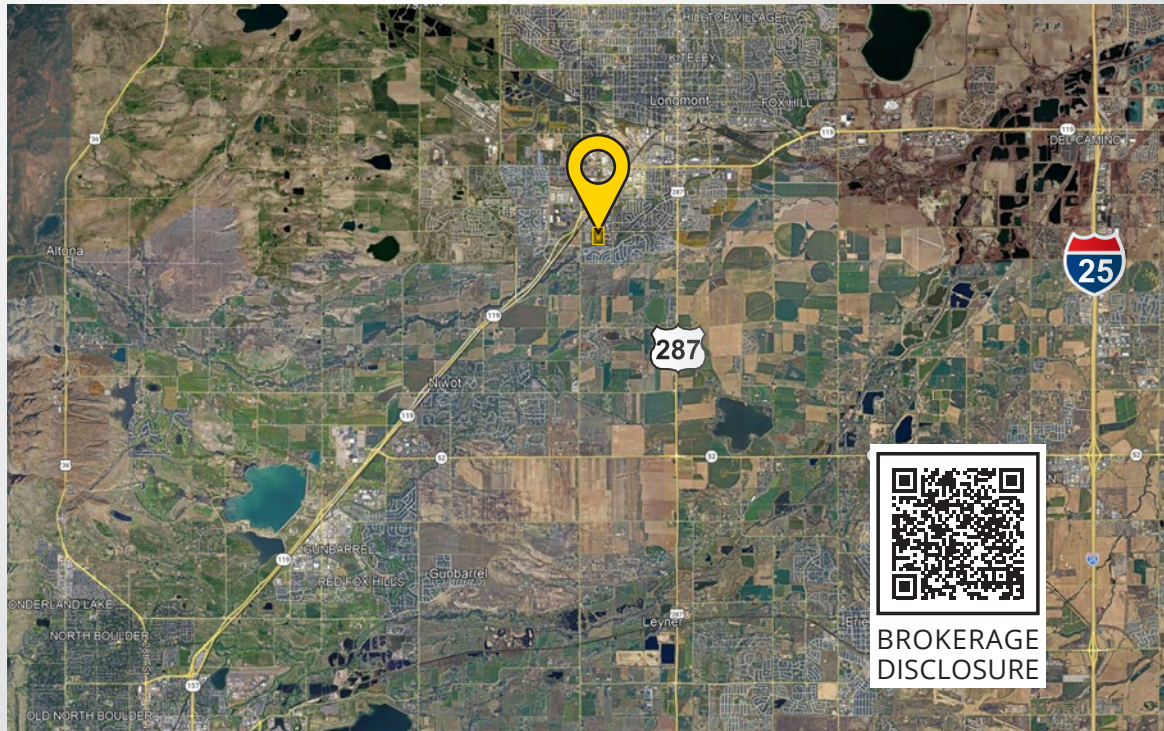
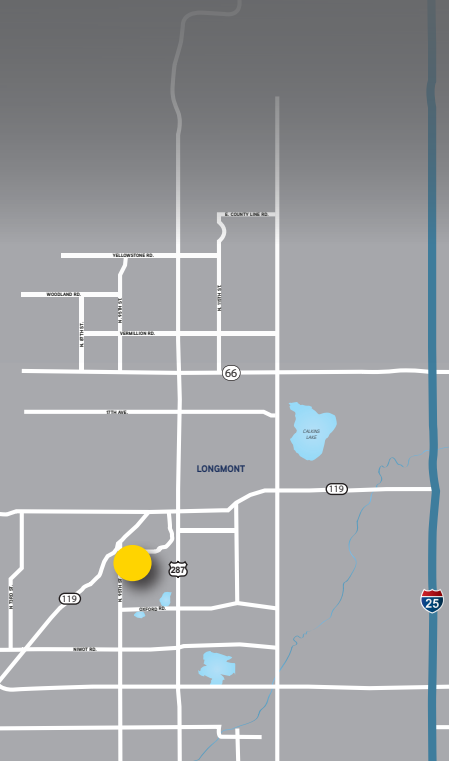
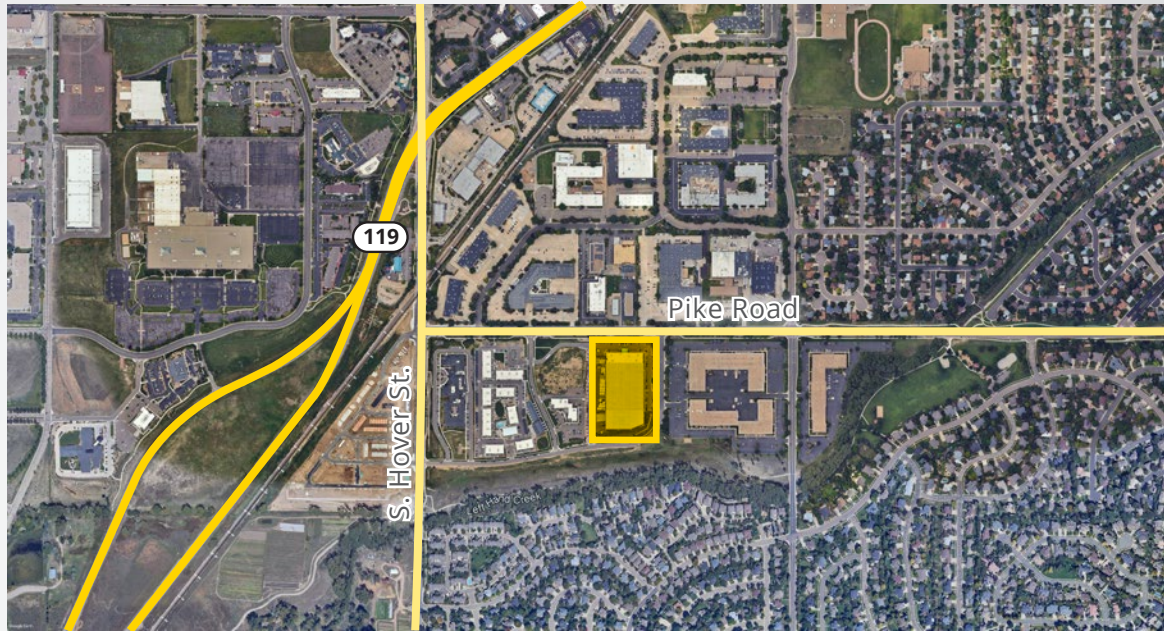


1925 Pike Road  
Longmont, CO 80501

## Contact

STEVE SERENYI  
303 283 4578  
[steve.serenyi@colliers.com](mailto:steve.serenyi@colliers.com)

4643 South Ulster Street  
Suite 1000  
Denver, CO 80237  
MAIN +1 303 745 5800  
FAX +1 303 745 5888  
[www.colliers.com/denver](http://www.colliers.com/denver)



**BROKERAGE  
DISCLOSURE**